

Atop[®]

ONE STOP DENTAL

Dental Equipment & Supplies

PROMOTIONS



Beyes[®]

Bowie Dick Test Set



Sale: \$279 (\$70 Off)

See **P21** for details

Terragene[®]

Biological Indicator



Sale: \$179 /pack

See **P9** for details

Atop[®]

Impression Material VPS



3+ @ \$42.95 /ea

See **P41** for details

Beyes[®]

Low Speed Package



Package Sale: \$575

See **P23** for details

Atop Dental Canada Inc Call us at: 1-877-703-3562 or 416-293-2868

Fax: 1-866-680-8748 Email: order@atopdent.ca Feedback or complaints: management@atopdent.ca

Follow Us: [f](#) Atop Dental Canada Inc. [@atopdentcanada](#) [@atopdent](#) [Atop Dental Canda Inc.](#)

Subscribe to us for
latest promotions:
www.atopdent.ca





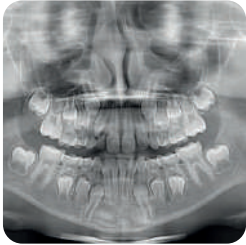
DURAY[®] 2D

Extraoral X-ray Series

The Duray[®] 2D is the latest addition to Beyes[®] gamma line of panoramic platforms, providing nine specialized panoramic programs, an integrated touchscreen, and convenient future proofing. In an era where remote upgrades hold growing significance, the Duray[®] 2D platform is intentionally designed for easy remote enhancement. Drawing from the well-established Duray[®] 3D platform in the market, the Duray[®] 2D introduces unmatched innovation to the world of panoramic imaging.

The most versatile 2D platform in our Extraoral gamma line has arrived: the Duray[®] 2D Ceph. With its exceptional panoramic and one-shot cephalometric capabilities, it can be effortlessly upgraded to 3D at any time. Elevate your clinic to a whole new level whenever you choose, and attain a comprehensive 3-in-1 solution by swiftly and easily adding the 3D module. Select your preferred ceph size-18x24cm or 30x24cm-and achieve outstanding images, all thanks to the state-of-the-art CSI-CMOS flat panel sensor.

Its elegant and compact design, smart backlight and touchscreen, automated sensor movement, and ergonomic patient positioning provide the ideal solution for modern clinics.



Duray 2D

#14194

- Smart Backlight
- Integrated Touchscreen
- Advanced Sensor
- New Dynamic and Automatic Image Focusing

Reg. \$31,900
Introductory Special:
\$24,880



Duray 2D CEPH

#14195

- One Shot Ceph
- Advanced Sensor
- Smart Backlight

Reg. \$52,200
Introductory Special:
\$40,710

*Installation is subject to local regulations.

**Free goods must be of equal or lesser value and cannot be combined with any other offers. All offers will require a proof of purchase dated from October 1 to December 31, 2024 and must be reflected on one invoice. Offers must be redeemed no later than January 15, 2025. Please allow 4 to 8 weeks for promotion to be processed. All brands are holders of their respective trademarks

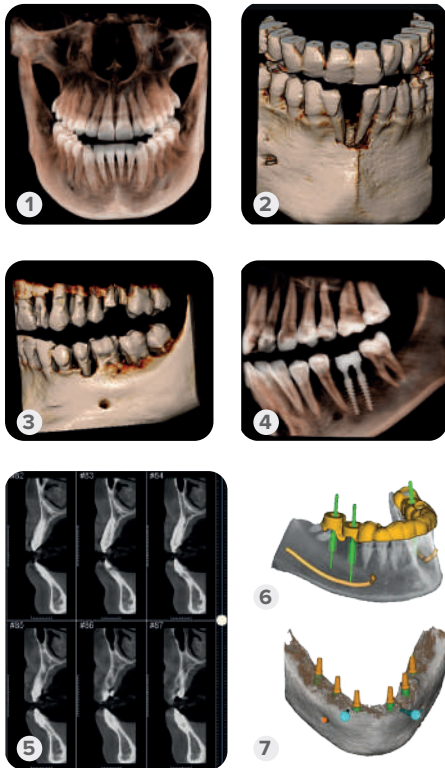


DURAY[®] 3D



Extraoral X-ray Series

Duray[®] 3D is a complete, compact, and fully upgradable 3D CBCT Panoramic and Cephalometric system. It covers a gamut of applications - such as endodontics, periodontology, surgery, implantology, and orthodontics - providing everything you need for your daily practice. It's a flexible solution that can be upgraded to one-shot cephalometry any time.



- Touchscreen Next To Patient
- Quick Cephalometrics
- Instantly Upgradeable
- Automatic Metal Artifact Reduction (AMAR)
- Automatic Noise Reduction (ANR)
- Advanced Technology
- Mirroring
- Smart Backlight
- Safe & Easy
- Plug & Play
- Quick Positioning



- 1.10x10 hd for a full mouth evaluation.
- 2.5x6,5 hd small volume for endodontic and periodontic evaluations.
- 3.7x6,5 volumes for local.
4. Evaluations of periodontal diseases or implants osteointegration checks.
5. Cross sections – evaluation of the cortical bone.
6. Example of multiple implant planning.
7. Examples of single and multiple implant planning.

Duray 3D Pan
#14190

Reg. **\$76,850**
Introductory Special:
\$55,419

Duray 3D Ceph
#14193

Reg. **\$91,350**
Introductory Special:
\$71,250

*Installation is subject to local regulations.

**Free goods must be of equal or lesser value and cannot be combined with any other offers. All offers will require a proof of purchase dated from October 1 to December 31, 2024 and must be reflected on one invoice. Offers must be redeemed no later than January 15, 2025. Please allow 4 to 8 weeks for promotion to be processed. All brands are holders of their respective trademarks



DURAY[®] Intraoral Sensor



VALUE!

Thin and Comfortable



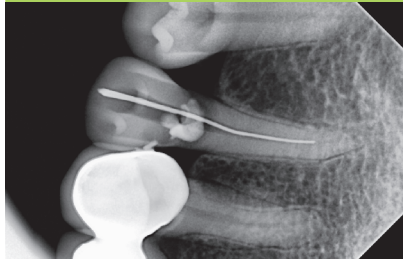
With an ultra-thin 4.4mm portfolio and ergonomically designed with rounded corners, it is easier than ever to position for bitewing images and offers a maximum level of patient comfort.

Durable and Reliable



Duray Sensor is waterproof with IP68 protection and can be immersed in disinfectant liquids to prevent cross infections. Made with premium materials and designed with robust CNC shell fusion ultrasonic welding technology and tested with thousands of bending experiments during production processes to ensure durability and a long product life cycle.

High Resolution Imaging



The leading 16-bit ADC chip brings you up to 60000+ greyscale crystal clear images in seconds. A high-definition sensor of up to 2.2 million pixels provides a theoretical resolution of 25 lp/mm. Produces clear and detailed images with very good contrast and sharpness for diagnosis so that subtle root apex bifurcation can be easily found.

Easy to use



Duray Sensor provides easy-to-operate and straightforward software with one-click smart installation and offers plug-and-play simplicity with a high-speed USB 2.0 connection. Equipped with powerful image processing functions, so you can significantly and quickly improve the quality of radiographs.

Model	Code	Reg.	Sale
Size 0	(19037)	\$3,036	\$2,599
Size 1	(20231)	\$3,900	\$3,185
Size 1.5	(19036)	\$4,200	\$3,510
Size 2	(20230)	\$4,790	\$4,065

GIFT CARD

Get \$300 Gift Cards or \$300 Atop Credit

Size 1 + Size 2 Package:
(20232)
Reg. \$8,190 **Sale: \$6,825**

GIFT CARD

Get \$500 Gift Cards or \$500 Atop Credit

*Credit applicable on your next order. Credit card payments please add 3% processing fee.



Duray Intraoral Sensor comes with a two-year replacement warranty against manufacturer defects. Atop offer extended warranty and Duray Care Protection. Please contact us for full details.

**Free goods must be of equal or lesser value and cannot be combined with any other offers. All offers will require a proof of purchase dated from October 1 to December 31, 2024 and must be reflected on one invoice. Offers must be redeemed no later than January 15, 2025. Please allow 4 to 8 weeks for promotion to be processed. All brands are holders of their respective trademarks

DURAY®

Intraoral Sensor EXTENDED WARRANTY

EXTRA 1 YEAR WARRANTY

(Original warranty is 24 months)

(20702)	For Duray Sensor Package (Size1+ Size2)	\$935
(20700)	For Duray Sensor Size 1 Only	\$435
(20701)	For Duray Sensor Size 2 Only	\$545
(11482)	For Duray Sensor Size 0 Only	\$380
(11484)	For Duray Sensor Size 1.5 Only	\$490

DURAYCARE PROTECTION PLAN

(Full replacement for sensor including incidents of accidental or physical damage, Max. replacement is 1 time per sensor)

(20240)	For Duray Sensor Package (Size1+ Size2)	\$1558/2 years
(20241)	For Duray Sensor Size 1 Only	\$725/2 years
(20242)	For Duray Sensor Size 2 Only	\$908/2 years
(11487)	For Duray Sensor Size 0 Only	\$634/2 years
(11488)	For Duray Sensor Size 1.5 Only	\$816/2 years



*If Extended Warranty is purchased, add-on for DurayCare Protection Plan purchase will automatically extend to cover for 36 months. Buy it within 60 days of initial purchase of sensors.

Beyes
CANADA

Sensibles™ COMPATIBLE WITH ALL BRAND SENSORS!!

UNIVERSAL SENSOR HOLDER STARTER KIT

- Everything you need to capture the perfect image is inside!
- Adjusts easily; holds securely
- Perfect for Anterior, Posterior and Bite-Wing images
- Autoclavable and reusable
- Durable and 100% latex-free

Using Sensibles is as easy as 1-2-3



Effective October 1st - December 31st, 2024



Reg. \$279.40 **Sale: \$205²⁰**

Include:

- Positioning Arm Posterior x1
- Positioning Arm Bite Wing x1, Positioning Arm Anterior x1
- Bite Block Large Size x2, Bite Block Medium Size x2
- Posterior Aiming Ring x1, Anterior/Bite Wing Aiming Ring x1

We now also sell as individual parts



(10784)	Positioning Arm Posterior	\$75.06/pk
(10781)	Positioning Arm Bite Wing	\$65.60/pk
(10783)	Positioning Arm Anterior	\$75.06/pk
(14934)	Bite Block Size Medium, Refill	\$136.08/12pk
(14935)	Bite Block Size Large, Refill	\$136.08/12pk
(12237)	Anterior/Bite Wing Aiming Ring	\$21.32/pk
(12233)	Posterior Aiming Ring	\$21.32/pk

*All offers will require a proof of purchase dated from October 1 to December 31, 2024 and must be reflected on one invoice. Offers must be redeemed no later than January 15, 2025. Please allow 4 to 8 weeks for promotion to be processed. All brands are holders of their respective trademarks.

Table of Contents



Q4 New Products



02

Duray 2D / 3D

04

Duray Intraoral Sensor

07

Masteri Trade-in

10

X3 Dental Chair



EQUIPMENT

- 9 Dental Chair & Accessories
- 22 Handpieces
- 29 Equipment
- 30 Piezo Scalers
- 31 Tips
- 32 Endodontics
- 33 Imaging & Digital X-Ray
- 37 Lab Equipment
- 38 Vacuum & Compressors



- 57 Endodontic
- 59 Impression
- 60 Pins & Posts
- 60 Laboratory
- 61 Preventative
- 62 Restorative
- 64 Surgical
- 65 X-Ray



Atop Exclusive

- 50 Bausch
- 50 Dentamerica
- 52 **New!** SS White
- 64 MYCO Medical
- 66 Office Essential Spare Parts
- 66 Beutlich
- 67 **New!** American Eagle
- 67 Miltex
- 68 USA Instruments / DHC
- 69 **New!** 4D Rubber
- 70 **New!** Shofu
- 71 **New!** ProEdge
- 73 SPA Dent
- 74 Silmet
- 75 **New!** HuFriedy Group
- 76 **New!** DiaDent
- 78 GluStitch / TBM
- 78 Orabloc
- 79 **New!** Mark3
- 80 **New!** Aurelia
- 83 Plasdent
- 84 **New!** Beyes



SUPPLIES

- 8 Top Sellers
- 16 Infection Control
- 40 **Atop Brands**
- 44 **Atop Brands 4+1**
- 50 Articulating / Alloys
- 51 Lab Burs
- 51 Burs
- 55 Cements & Liners
- 56 Crown & Bridge
- 56 Disposables



VENDORS

- 9 **New!** Terragene
- 14 Parkell
- 15 Tuttnauer
- 18 **New!** Medicom
- 21 **New!** Beyes
- 28 Enbio
- 37/72 **New!** Zest Dental
- 38 BaseVAC
- 39 MARS
- 48 Germiphene
- 49 Tokuyama

EASIEST WAY TO GET THE BIGGEST GIFTS*

- \$20 Gift Card** with purchase of \$500
- \$100 Gift Card** with purchase of \$1,000
- \$200 Gift Card** with purchase of \$2,000
- \$300 Gift Card** with purchase of \$3,000
- \$500 Gift Card** with purchase of \$4,000



Price Match!

Show us a lower advertised price and we will beat or match it!*

CANADA WIDE FREE SHIPPING

Make purchasing more flexible and easier with Atop!

Ontario: minimum order of \$299

Other provinces: minimum order of \$599

Items with sign will need a shipping fee due to their sizes and weights. Equipment and other items may have shipping fees. Orders are processed with your local sales tax regulations.

*Some restrictions may apply. Please call for details. Items with are not qualified for gift cards. Promotional products are also qualified! Exclusive Equipment offers cannot be combined with any other promotion.

**Class B
Autoclave**



Masteri[®] 18L \$7,330

Trade-in
Value: **-\$2,331**

FOR ONLY
\$4,999

TRADE UP TO A NEW Beyes[®] Masteri

Get **\$2,331** credit towards a new Masteri 18L when you trade-in your old Sterilization Units! (The old Unit can be any brand, year, model, style, and condition. Ontario Only. If outside of Ontario, please contact us with your inquiry)

**MASTER IN
STERILIZATION**



21 Minute Cycle

25 Month Warranty

- This Class B autoclave meets and exceeds the latest regulatory requirements so you can focus on your practice.
- FastMasteri delivers industry leading sterilized instruments in approximately 21 minutes.
- The built-in data logger saves time and money storing your data on a USB stick. Internal printer option available.
- Sterilization options are easily accessible with the intuitive touch display to enhance user experience.

Step **1**

FILL



Scan QR code or go to this link:
<https://atopdent.ca/en/autoclaves/new>
to complete trade-in form.

Step **2**

SCHEDULE

Call our office to schedule your appointment. Our technicians will come in to install your new unit and take your old one away. Note separate shipping & install fees apply.

Step **3**

RECEIVE

For each trade-in sterilization unit, you will receive a brand new Masteri 18L for only \$4,999. Trade-in orders must be complete by Dec 31, 2024

ATOP PICKS Best Sellers TOP 10

2024

UP TO 70% OFF

Dental Bibs

500 pcs/case
(18877) Blue
(18878) Lavender
Reg. \$39.95



Member:
\$24⁹⁹
Sale:
\$26⁹⁹

Disposable Air Water Syringe Tips

250 pcs/pack
(10618) Assorted
Reg. \$34.95



Member:
\$25⁹⁵
4+1 FREE:
\$27⁹⁶

PSP Barrier Envelopes

(10712) No. 0 (10709) No. 1
(10713) No. 2 (10710) No. 3
(10711) No. 4
Reg. \$21.95



4+1 FREE:
\$17⁵⁶
20+8 FREE:
\$15⁶⁸

Ultrasonic / Enzymatic Tablets

64/box
1 tablet makes 0.5 Gallon/2L
(19432) dual enzyme,
anti-corrosion formula,
fresh mint scent
Reg. \$49.00



Member:
\$42⁹⁵
Sale:
\$45⁹⁵

Sterilization Pouch

Class 4, 200Pcs/Box
(19960) 2.25x4" (19961) 2.75x9"
(19962) 3.5x5.25" (19963) 3.5x9"
(19964) 5.25x10"
Reg. \$21.95 Sale: \$6.50 & up



Member:
\$4⁹⁰ & up
4+1 FREE:
\$5²⁰ & up

Saliva Ejectors

Disposable saliva ejectors with
affixed tips, Latex Free,
1000 pcs/case
(18879) Clear w/ Blue Tips
(18880) White w/ White Tips
Reg. \$45.95



Member:
\$39⁹⁵
3+@:
\$42⁹⁵

Barrier Film

4"x 6", 1200 pcs/roll
(10619) Blue
(10620) Clear
Reg. \$25.95



Member:
\$18⁹⁹
4+1 FREE:
\$20⁷⁶

Diamond Burs FG

10pc/pack
SC: Super Coarse C: Coarse
M: Medium F: Fine
EF: Extra Fine
Reg. \$22.89



Member:
\$20⁶⁰
3+1 FREE:
\$17¹⁷

High Volume Evacuator Tips

100 pcs/bag, 10bags/case
(19814) Vented, White
Reg. \$49.99



Member:
\$33⁹⁵
Sale:
\$39⁹⁹

CI5-E1 Chemical Integrator for Steam Sterilization

100/pack
(14772)
Reg. \$29



4+1 FREE:
\$23²⁰



Dear valued Customers, Friends, and Partners:

Thank you for your continued patronage and entrusting us to provide your practice with our amazing dental products and services. Our 10+ years of experience in the dental industry have been made possible by loyal customers, like yourself, who rely on the satisfaction, quality, and reliability in our products and brand. We are excited to serve you once again, and appreciate all your support.

- Alice X. President Atop Dental Canada Inc.



Annual Harp Test

We now offer annual HARP Testing Service.

We can help keep your office in compliance with the H.A.R.P Act.

Contact us for more info

416-293-2868



October 1 - December 31, 2024

24h Biological Indicator for Steam

(13090) Self-Contained Biological Indicator, 100/pk

Reg- \$209.99 **Sale: \$179**



Chemical Integrator for Steam (FDA)

(13092) Unique point Chemical Integrator, 200/pk

Reg- \$55.90 **Sale: \$47⁵⁰**



Bowie-Dick Test Card Kit for steam

(13094) Bowie-Dick Test Card Kit, 120/pk

Reg- \$339.00 **Sale: \$299**



Beyes | Dental Chair Accessories



X1 Premium Doctor's Stool

Sewn:

- (14344) Burgundy
- (14290) Cobalt Blue
- (14291) Carbon Black
- (14292) Espresso Brown
- (14293) Sky Blue
- (14294) Mustard Yellow
- (14295) Olive Green
- (14298) Off-White
- (14299) Medium Grey

Reg- \$899.95 **Sale: \$820⁸⁴**



Premium Assistant Stool

Sewn, Arm Support, Adjustable height for feet:

- (20402) Burgundy
- (20403) Cobalt Blue
- (20404) Carbon Black
- (20299) Espresso Brown
- (20405) Sky Blue
- (20407) Olive Green
- (20408) Off-White
- (20409) Medium Grey

Reg- \$1,349 **Sale: \$952**



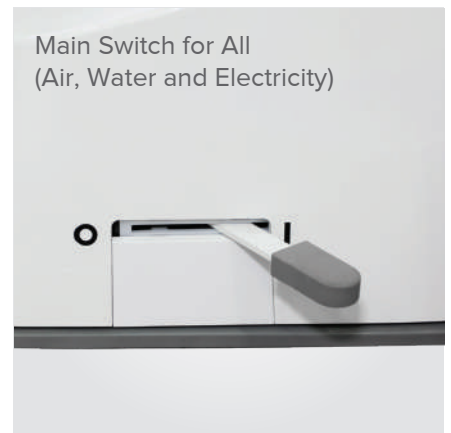
Comfortek® X3

NEW!

Designed and built fully according to industrial standard and advanced production process, Comfortek X3 performs more stably and reliably due to its superior quality.

Comfortek X3 is equipped with high-performance motors to ensure smooth operation and low noise. Its ergonomic design and the seat and backrest linked chair (a chair where the seat and backrest can be moved backward and forward in linkage) further enhance the comfort of patient.

- Floor-standing water unit
- Ergonomic design, with seat and backrest linked chair
- Efficient, with precision control of seat position





Comfortek X3[®] EXPERT Dental Operating System

Includes:

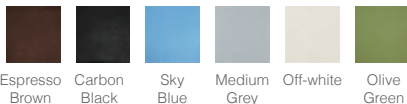
- Stellar patient chair
- Luxury upholstery
- Delivery unit
- Cuspidor
- Floor standing water unit
- L&R long arm rest
- Assistant and doctor control panel with memory position
- M5 LED light
- Built in LED piezo scaler
- Premium doctor stool and assistant stool
- 3 year warranty on parts
- 7 year warranty on motor

#11393

Compared to **\$24,995**

INTRO PRICE: \$19,995

Color Option



Comfortek X3[®] MASTER Comprehensive & Advanced Technology

Includes:

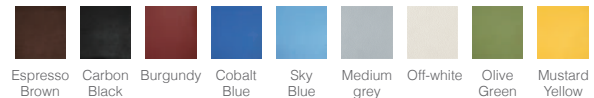
- Stellar patient chair
- Luxury sewn upholstery
- Deluxe Delivery unit
- Floor standing water unit
- L&R long arm rest
- Cuspidor
- Assistant and doctor control panel with memory position
- Airlock switch with 4 way joystick
- M8 LED operating light, white and yellow light sensor
- 2 Fiber-optic tubing
- Added electric motor
- Built in LED piezo scaler
- Premium doctor stool and assistant stool
- 3 year warranty
- 7 year warranty on motor

#11394

Compared to **\$27,995**

INTRO PRICE: \$22,995

Color Option



Flexible Options:



*Shipping and Installation not included. Credit card payments please add 3% processing fee. All offers will require a proof of purchase dated from October 1 to December 31, 2024 and must be reflected on one invoice. Offers must be redeemed no later than January 15, 2024. Please allow 4 to 8 weeks for promotion to be processed. All brands are holders of their respective trademarks



Comfortek® X1

Dental Operating System

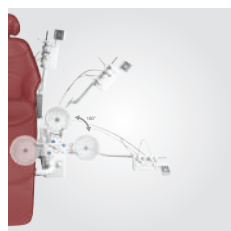
Comfortek X1 Series dental operating system is tailored for professionals, providing more efficiency during treatments and improving the working environment.



Reliable & Durable
Main frame is composed of cast aluminum and steel parts.



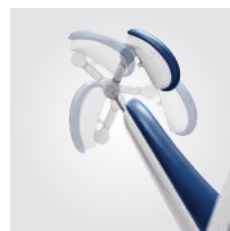
Main Switch
Reduces the chances for accidents during off-time with a main switch for all (air, water and electricity).



Flexible Control
The wide range swivel cuspidor bowl and assistant element provides a more spacious treatment area.



Hygienic
Cleaning and disinfection with easy removable suction filter kit & 360° rotatable stainless water outlet.

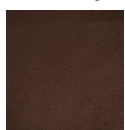


Comfortable and Considerate
With double-articulated headrest you can easily adjust for comfort.

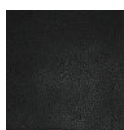


Warranty
1 Year Full Warranty
5 Years on motors

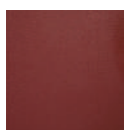
Color Option:



Espresso Brown



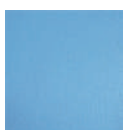
Carbon Black



Burgundy



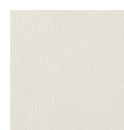
Cobalt Blue



Sky Blue



Medium grey



Off-white



Olive Green



Mustard Yellow



Comfortek X1® SMART

Dental Chair Package

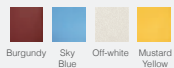
Includes:

- Patient chair
- Delivery unit
- Cuspidor
- Left side arm rest
- Foot control operation unit
- M3 halogen operating light
- Premium doctor stool
- Sewn upholstery
- 1 Year full warranty
5 Years on motors

**Comfortek X1 SMART
(20503)**

Compared to \$14,099
Sale: \$9,995

Color Option - The Classics:



Comfortek X1® EXPERT

Dental Operating System

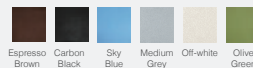
Includes:

- Patient chair
- Delivery unit
- Cuspidor
- Two arm rests
- 4 way foot control
- Assistant arm side control
- Dentist control panel w/ memory position
- M5 LED operating light w/ sensor
- Built-in LED piezo scaler
- Premium doctor stool
- Premium assistant stool
- 1 Year full warranty
5 Years on motors

Comfortek X1 EXPERT (20401) **in stock!**

Compared to \$17,599
Sale: \$12,998

Color Option - The Modern:



Comfortek X1® MASTER

Comprehensive & Advanced Technology

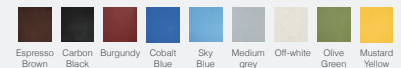
Includes:

- Patient chair
- Delivery unit
- Cuspidor
- Two arm rests
- 4 way foot control
- Dentist and assistant control panels w/ memory position
- M8 LED operating light (yellow and white light switch)
- Airlock switch with 4 way joystick
- Built-in LED piezo scaler
- 2 fibre optic 6 hole tubing
- Built-in electric motor
- Premium doctor stool
- Premium assistant stool
- 1 Year full warranty
5 Years on motors

Comfortek X1 MASTER (20504) **in stock!**

Compared to \$21,999
Sale: \$19,999⁹⁸

Color Option - The Bold:



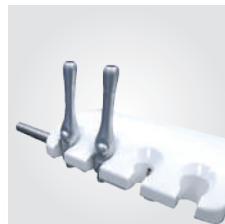
Optional Configurations:



Proportional Foot Control



Air Lock Switch with 4 Way Joystick



Second HVE Suction



Monitor Arm



Quick Disconnect (Air or Water) x1



Quick Disconnects (Air and Water) x2

and more...



*Shipping and Installation not included. Credit card payments please add 3% processing fee. All offers will require a proof of purchase dated from October 1 to December 31, 2024 and must be reflected on one invoice. Offers must be redeemed no later than January 15, 2025. Please allow 4 to 8 weeks for promotion to be processed. All brands are holders of their respective trademarks



BLU MOUSSE
BITE REGISTRATION

- (13969) Regular Set
- (13970) Super-Fast Set
- (19008) Blu Mousse 60

Reg. \$89⁴⁸

\$79⁹⁵
2+@:\$72



C&B METABOND
QUICK SELF-CURING CEMENT SYSTEM

- (19023) Cement System
- (19025) L- Powder, Clear
- (19014) L- Powder, Radiopaque, Tooth shade
- (19016) Universal Catalyst
- (19015) Quick Base, "B"

\$759
\$69⁹⁵
\$89⁹⁵
\$396⁹⁵
\$149⁹⁵



BRUSH & BOND
DENTIN/ENAMEL BONDING AGENT

Includes: 3ml liquid, mixing well, plus 100 standard Activator Brushes

- (19007) Liquid 3ml
- (19009) Complete Kit

\$159⁹⁵
\$269⁹⁵



MIXING TIPS
GENUINE MIXPAC TIPS

- (19012) Aqua Base
- (19011) Yellow Base
- (18989) Pink Base

bag of 30
\$49⁹⁵



ADD & BOND
ADHESIVE COMPOSITE PRIMER

- (19006) Add & Bond

\$149⁹⁵



ACCUFILM II
ARTICULATING FILM

- (19022) Black/Black
- (19024) Red/Black

Reg. \$43³⁴

\$36⁹⁵



DIGITEST® 3
DIGITAL PULP VITALITY TESTER

The New Digitest® 3 Pulp Vitality Tester is a hand-held, battery-powered diagnostic device that identifies a living tooth by stimulating it with a weak electric current. The unique Digitest 3 stimulus is designed to reliably trigger a patient response in a vital tooth with minimal discomfort.

- (18990) Digitest 3, Pulp Vitality Tester

\$750



Comfort Grip™

Reg. \$279

\$265

- (21005) Triple Bend 30K Insert (Standard Flow)
- (21007) Universal 30K Insert (Standard Flow)
- (21004) Universal Slim 30K Insert (Standard Flow)



SNAP POWDER

- (18993) 40gm/ Bottle

Reg. \$54⁹⁹
\$43⁵⁰



30K Universal Internal Water Scaler Insert

- (21006) Regular Set

\$255



SNAP LIQUID

- (18994) 4oz/ Bottle

Reg. \$54⁹⁹
\$47⁵⁰

Valid Oct 1 - Dec 31, 2024

parkell®

New!

TurboSensor® Ultrasonic Scaler

New

TurboSensor® Ultrasonic Scaler
The Backbone of Many Offices' Hygiene Department



TurboSensor® Ultrasonic Scaler

- Versatile and dependable.
- Clearly marked intuitive controls.
- Automatically adjusts frequency to power any 25KHz or 30KHz Parkell insert.
- Autoclavable handpiece sheaths improve infection control.
- On-demand foot-controlled Turbo Power Boost for heavy calculus.
- Broad range of power easily accommodates both the sensitive patient with light deposit to the patient who hasn't had a professional scaling in years, as well as everyone in between.
- Expanded low-power "Perio" mode.



- Includes:
- Scaler unit
 - Two autoclavable handpiece sheaths
 - In-line water filter with spare disk
 - Quick-disconnect water connection
 - Foot controller



(12960) Pearl Reg. \$1,720 **\$1,620**

Tuttnauer **NEW**

T-EDGE AUTOCLAVES

The only gravity and airflow removal autoclave upgradable to pre/post vacuum

- **Fast Cycles**
Fast cycle times for wrapped instruments, complete cycle, including drying.
- **Optimal Chamber Capacity**
More than 75% chamber capacity with 5 extra-long trays.
- **Convenient Loading**
Fast cycle times for wrapped instruments, complete cycle, including drying.
- **Advanced Documentation**
A variety of documentation and traceability options and barcodes.
- **User-friendly Touchpad Control Panel**
Displays programs, cycles times, water levels and more.

📞 Please call us for price.

Clean & Simple 1 Gallon

Quiet cleaning power which is less aggressive to instruments.

Tank Dimensions 9.38" x 4" x 5.38", Overall 10.25" x 8.25" x 6.5"

📞 Please call us for price.



11" Chamber Sizes



Clean & Simple 1 Gallon

Hygenic*

Dental Rubber Dam

(14836) 6"X6", 36Pcs/Box, Medium Blue
 (14834) 6"X6", 36Pcs/Box, Medium Green

Reg. ~~\$39.95~~ **Sale: \$36⁹⁵**



(11766) 6"X6", 15pcs/Box, Non-Latex dental dam

Reg. ~~\$49.95~~ **Sale: \$47⁹⁵**

Blossom*

Latex Dental Dam

5"X5", 52Pcs/Box
 (10965) Green Mint (10966) Blue



6"X6", 36Pcs/Box
 (10967) Green Mint (10968) Blue



Reg. ~~\$13.50~~ **Sale: \$11⁹⁵** 4+1FREE = **\$9⁵⁶/box**

PDI*

Sani-Cloth Plus

160 Sheets/Can

(14104) Large, 6"x6.75"

Reg. ~~\$17.95/can~~ **12+ @ \$9⁹⁹/can**



Metrex*

CaviWipes

(10033) Large, 160Sheets/Can 6"X6.75"

Reg. ~~\$23.95/can~~ **12+ @ \$19⁹⁵/can**

(10034) X-Large, 65Sheets/Can 9"X12"

Reg. ~~\$23.95/can~~



SciCan*

Optim 33TB

(13935) Large, 160Sheets/Can 6"X6.75"

Reg. ~~\$29.95/can~~ **12+ @ \$19⁹⁵** **Sale: \$23⁹⁹**



Crosstex*

CSR Wrap

100Pcs/Box

	Reg.
(14874) 12" x 12"	\$13.99
(14875) 15" x 15"	\$23.99
(14876) 18" x 18"	\$30.99
(14877) 20" x 20"	\$36.95
(14878) 24" x 24"	\$45.99



Professional's Choice*

Class 4 Self-Sealing Sterilization Pouches

200/box	Reg.	Sale
(18387) 2.25" x 4"	\$9.95	\$7 ⁹⁹
(18388) 2.75" x 10"	\$11.95	\$9 ⁹⁵
(18389) 3.5" x 6.5"	\$11.95	\$10 ⁹⁵
(18390) 3.5" x 10"	\$12.95	\$11 ⁹⁵
(18391) 5.25" x 11"	\$20.95	\$15 ⁹⁵



Defend*

Ultrasonic Tablets

(12035) 64Pcs/Box

Reg. ~~\$69.95~~ **Sale: \$65⁹⁵**



Micrylium*

BioSURF Sprayer Kit

(19341) 710ml/Bottle

Reg. ~~\$18.99~~ **Sale: \$15⁹⁵**



Metrex*

CaviCide

(10030) 1 Gallon Btl. Reg. ~~\$42.95/btl~~

(10032) 2.5 Gallon Btl. Reg. ~~\$95.95/btl~~



BM Group

1X4L/Btl.

(10954)

BM-1000 Deluxe Anti-Microbial Hand Soap

Reg. ~~\$28.95/btl~~ **Sale: \$26⁹⁹**



(10978)

BM-4000 Isopropyl Alcohol 70%

Reg. ~~\$56.95/btl~~ **Sale: \$49**



(10979)

BM-4100 Isopropyl Alcohol 99%

Reg. ~~\$67.50/btl~~ **Sale: \$55²⁵**



(10984)

BM-4200 Denatured Ethanol Alcohol 99%

Reg. ~~\$49.90/btl~~ **Sale: \$43⁹⁰**



BM Group

(11005) BM-5000, Ultrasonic General Purpose

Reg. ~~\$39.95~~
Sale: \$34⁹⁰



(11007) BM-5200, Ultrasonic Plaster & Stone Remover

Reg. ~~\$49.95~~
Sale: \$39⁹⁵



(11008) BM-6000, Evacuation System Cleaner

Reg. ~~\$47.95~~
Sale: \$44⁹⁰



(11015) BM-6400, Ethanol Disinfectant & Cleaner

Reg. ~~\$49.95~~
Sale: \$46⁹⁰



(11006) BM-5100, Ultrasonic Tartar & Stain Remover

Reg. ~~\$49.95~~
Sale: \$44⁹⁰



(10976) BM-28+, Activated 2% Glutaraldehyde

Reg. ~~\$49.99~~
Sale: \$44⁹⁰



Micrylium*
Professional Disinfectants

(13833) BioText, 5 L Surface Disinfectant

Reg. ~~\$82.95~~
Sale: \$75⁹⁵



(19617) Lines, 5L Bag in Box

Reg. ~~\$159.90~~ **2+ @ \$105⁶⁹** **Sale: \$109⁵⁰**



Atop*
Level 3 Surgical Gown

(19995) Disposable, Large, 10Pcs/Pack

Length: 120 cm / 47.5 in
 Shoulder to cuff: 58.5 cm / 23 in
 Shoulder to Shoulder: 75 cm / 29.5 in



Reg. \$59.90/pack **1+1FREE = \$29⁹⁵/pack**

Atop*
Level 3 Face Mask

5+5 FREE

(19978) Blue, 50Pcs/Box

Reg. \$19.99/box **5+5FREE = \$9⁹⁹/box**



Blossom*
Powder Free Textured Nitrile Exam Gloves

Clearance

Blue, Non Sterile, 200Pcs/Box
 (10974) Medium (10975) Large
Sale: \$23⁹⁵ 10+ @ \$10⁹⁵/box



Blossom*
Powder Free Textured Nitrile Exam Gloves

Clearance

Size XL, 100Pcs/Box
 (10983) Dark Blue
 Reg. \$12.95/box **10+ @ \$7⁹⁹/box**



Blossom*
Powder Free Textured Nitrile Exam Gloves

Clearance

Size XL, 100Pcs/Box
 (10997) Teal
 Reg. \$12.95/box **10+ @ \$7⁹⁹/box**



Fineese Nitrile Examination Gloves

Special Sale

100 Gloves by Weight/Box
 (21231) S (21232) M (21233) L
 Reg. ~~\$13.99/box~~
Sale: \$9⁹⁹/box 5+5FREE = \$4⁹⁹/box



SafeSeal Quattro

Self-Sealing Sterilization Pouches with TruePress™ Technology

COVER ALL YOUR BASES

Multivariable process indicators confirm time, temperature and pressure.



		Reg.	Net.			Reg.	Net.
13813	2 3/4 x 9"	\$20.99	\$13.99	11067	5 1/4 x 6 1/2"	\$20.50	\$13.67
13814	3 1/2 x 5 1/4"	\$21.99	\$14.66	13818	7 1/2 x 13"	\$60.25	\$40.17
13815	3 1/2 x 9"	\$22.90	\$15.27	14856	12 x 17"	\$149.90	\$99.93
13816	2 1/4 x 4"	\$16.90	\$11.27				



2+1

200 pouches/box | Promotion not available on bulk pack.

AssureTouch Basics

Nitrile Medical Examination Gloves

Value without compromise.



- 13093** (XS)
- 13095** (S)
- 13096** (M)
- 13097** (L)

2.7 mils¹, 3.5 g
100 gloves/box; 10 boxes/case

5+5 Reg. **\$12.90**
Net. **\$6.45**

SafeBasics True Fit Thin™

Nitrile Medical Examination Gloves

Versatile, all-purpose glove.



- 11855** (XS)
- 13821** (S)
- 13826** (M)
- 11852** (L)
- 11856** (XS)
- 11853** (S)
- 11185** (M)
- 11850** (L)

3 mils¹, 3.5 g
300 gloves/box; 8 boxes/case

5+3 Reg. **\$38.90**
Net. **\$24.31**

SafeTouch Advanced Comfort

Nitrile Medical Examination Gloves



- 11339** (XS)
- 11338** (S)
- 11337** (M)
- 11336** (L)

2 mils¹, 2.7 g
300 gloves/box; 10 boxes/case

7+3 Reg. **\$46.90**
Net. **\$32.83**

Free goods promo items shipped with order. ¹Data on file. *Earn SafeAdvantage bonus points when you purchase any tagged promo. medicom.com/safeadvantage (Certain restrictions apply.)
¹Mils are measured at the palm and estimated based on a range of measurements. Medicom reserves the right to modify pricing and/or promotions at any time and without prior notice.



Duraflor Ultra®

White 5 % Sodium Fluoride Varnish

FAST-ACTING, GREAT TASTING, DRIES CLEAR

Effective treatment of hypersensitivity and prevents caries. Dentist and patient preferred ready-to-use and easy-to-apply, non-clumping formula. Does not contain gluten, peanuts, tree nuts, soy, sesame, corn, shellfish, egg or dairy products.

- **11149** Strawberry
- **11143** Cherry
- **11144** Mint
- **11145** Bubble Gum

0.4 ml x 30 units/box
Promotion also applicable on 200 units/box

Reg. \$69.90 **Net. \$55.92**

4+1



SafeTouch Advanced Form

Nitrile Medical Examination Gloves

Protection
and tactile
sensitivity.



- **11335** (XS)
- **11334** (S)
- **11333** (M)
- **11332** (L)

2.8 mils¹, 3.7 g
200 gloves/box; 10 boxes/case

6+4

Reg. \$31.90
Net. \$19.14



SafeMask Classics™

Procedure Earloop Face Masks

Reliable respiratory protection
at a surprisingly low price.



ASTM
LEVEL
...3

- **13846**
- **13847**
- **13848**

50 masks/box; 10 boxes/case
Also available in ASTM levels 1 & 2.

5+5

Reg. \$14.25
Net. \$7.13

SafeMask Premier Elite

Procedure Earloop Face Masks

High-level protection;
remarkable breathability.



ASTM
LEVEL
...3

- **11265**

50 masks/box; 10 boxes/case
Also available in ASTM levels 1 & 2.

6+4

Reg. \$20.25
Sale: \$17.95
Net. \$10.77

Free goods promo items shipped with order. *Earn SafeAdvantage bonus points when you purchase any tagged promo. medicom.com/safeadvantage (Certain restrictions apply.)

SafeMatrix™

Single-Use Matrix Band

Get with the Times

Make reprocessing and assembling matrix bands a thing of the past.

Increase workflow efficiency and gain time for patient care. For all MO/OD and MOD cavities, cusp build-ups or as a protective shield for neighbouring teeth during preparation, simply place, tighten and you are ready to go. Now available with mylar band options for easy penetration of UV light for curing and increased visibility of composite.



NEW

Clear Contour Bands (mylar)



- 30065** Narrow 4.5 mm
- 30066** Wide 6 mm

Contour Bands



- 12607** Narrow 4 mm
- 12604** Wide 6 mm

50 units/box; 8 boxes/case
Also available in straight bands.

2+1

Reg. \$106.99

Sale: \$102.90 Net. \$68.60

DentiCare® Pro-Polish

4+1

Prophylaxis Paste with Fluoride

In Unit Dose 2g/unit dose; 200/box

- 13766** Fine, Bubble Gum
- 13767** Medium, Cherry
- 13768** Medium, Mint
- 13764** Coarse, Mint



Reg. \$69.95

Sale. \$62.95 Net. \$50.36

In Jar 12oz./Jar

- 13754** Fine, Bubble Gum
- 13755** Medium, Cherry
- 13756** Medium, Mint
- 13753** Coarse, Mint



Reg. \$29.95

Sale. \$25.95 Net. \$20.76

SafeBasics

Tissue/Poly Headrest Covers

Reduce the risk of cross-contamination. Fluid repellent and breathable. Protect chair materials.



- 13788** White 10 x 10", 500 units/case

2+2

**Reg. \$49.95
Net. \$24.98**

**250*
BONUS
POINTS**

- 13791** White 10 x 13"

2+2

**Reg. \$62.95
Net. \$31.48**

**250*
BONUS
POINTS**

SafeWear Hipster Jacket

- 8101 (A-F)** Deep Blue
- 8103 (A-D)** Plum Purple
- 8104 (A-D)** Soft Blue
- 8105 (A-D)** White Frost

12 units/bag, also available in knee length lab coat.

Reg. \$39.99

High Performance Lab coat

- 8107 A-F** Deep Blue
- 8109 A-D** Plum Purple
- 8112 A-D** Soft Blue
- 8110 A-D** White Frost



12 units/bag

Reg. \$39.99 Net. \$29.99





CI5-E1

Chemical Integrator for Steam Sterilization

- Type 5 Test, Single-use moving front chemical indicators for monitoring Steam sterilization process.
- Consists of a special wick and a steam and temperature sensitive chemical pellet.
- The migration is visible through a zone marked Accept or Reject.

4+1 FREE

Reg. \$29/pack
Net: \$23.²⁰/pack



(14772)
100/Pack



CI5-P1

Unique Point Chemical Integrator for Steam Sterilization

- Type 5 Test, Single-use unique point chemical indicators that consist of paper strips printed with indicator ink.
- Intended to be placed in each pack, pouch, container, tray or other containment device to function as an independent monitor of critical parameters for sterilization cycles.
- Colour change indicates effective sterilization processes.

4+1 FREE

Reg. \$29/pack
Net: \$23.²⁰/pack



(11959)
200/Pack



CI2-P1

Bowie-Dick Test Card

- Bowie Dick Test, Consists of a Type 2, metals free chemical indicator. Used in Class B Sterilizers.
- Use daily to monitor the effectiveness of air removal.
- Cycle information can be recorded on the back of the indicator.

4+1 FREE

Reg. \$239/pack
Net: \$191.²⁰/pack



(14770)
120/Pack



Bowie-Dick Test + Holder Set

1 Box CI2-P1 **(14770)** +1 Holder **(11175)**

Atop Exclusive: \$279
Save \$70 when you buy it as a set!



*One promo per office

Bowie-Dick Test Card Holder

- For Bowie Dick Test Card
- Metal Card Holder

4+1 FREE

Reg. \$110/pack
Net: \$88/pack **(11175)**



FREE GOODS REDEMPTION: 1.Go to “http://beyes.ca/en/redeems/new” 2.Fill out the form and submit (Promo code: **CAQ424**)
*Free goods must be of equal or lesser value and cannot be combined with any other offers. All offers will require a proof of purchase dated from October 1 to December 31, 2024 and must be reflected on one invoice. Offers must be redeemed no later than January 15, 2025. Please allow 4 to 8 weeks for promotion to be processed. All brands are holders of their respective trademarks.

Disposable Saliva Ejector With Dental Mirror

ALL IN ONE to help retract, provide better vision, and suction!

(20501) Saliva Ejector Mirror Kit
Includes 1 handle and 500 disposable mirror heads

\$114.92 **ATOP EXCLUSIVE** **\$99²⁵**

(20500) Saliva Ejector Handle
Includes 1 handle and 1 disposable mirror head

ATOP EXCLUSIVE **\$25⁹⁵**

<p>Feather Light During Treatment</p>	<p>Anti-Fog Mirror</p>	<p>Allows Two Handed Dentistry</p>	<p>Provides More Patient Comfort</p>



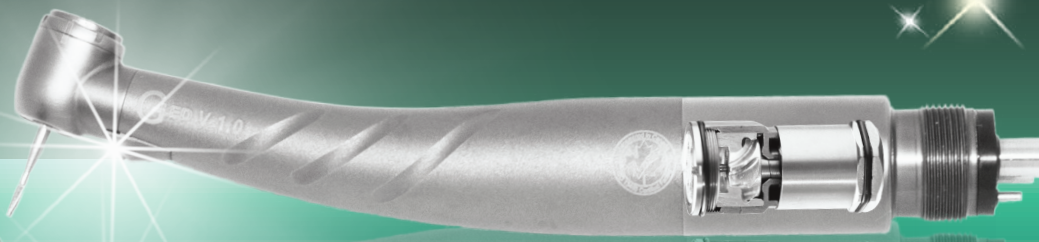
Buy 2 PD HP Get 1
FREE PD Coupler
\$186 Value

AirLight® M800 Smart

HIGH SPEED HANDPIECE



Just Brilliantly Bright Illumination!



- Direct LED
- Built-in Generator
- Ceramic Ball Bearings
- Push Button Auto Chuck
- 3-Ports Coolant Spray
- Swivel and Quick Disconnect
- 1 Year Warranty

Compatible with a great variety of coupling systems:

4 Hole Mini Head (13143)



Beyes® PD Mini Head (13182)



W&H® Standard (13148) Mini (13149)



NSK® Mini Head (13164)



Kavo® Mini Head (13159)



Star® Standard (13170) Mini (13171)



Effective October 1st - December 31st, 2024

BUY 2 GET 1 FREE

Reg. \$678.⁶⁰/ea Net: \$452.⁴⁰/ea

Beyes
CANADA

FREE GOODS REDEMPTION: 1. Go to "http://beyes.ca/en/redeems/new" 2. Fill out the form and submit (Promo code: **CAQ424**)
*Free goods must be of equal or lesser value and cannot be combined with any other offers. All offers will require a proof of purchase dated from October 1 to December 31, 2024 and must be reflected on one invoice. Offers must be redeemed no later than January 15, 2025. Please allow 4 to 8 weeks for promotion to be processed. All brands are holders of their respective trademarks.

AirLight® M800 X



- Direct LED
- 27W of Torque
- Instant Stop Capability
- Quattro Spray
- Built-In Generator
- Extra Quiet
- X-Ball Bearings
- Titanium Body with Micro-Tex Finish
- 25 Months Warranty

Backend	Code
Beyes® PD	(19475)
Star®	(19476)
NSK®	(19474)
KAVO®	(19473)

Torque 27W

BUY 1, GET 1 FREE!

Reg: \$1,498/ea **Net: \$749/ea**

Valid October 1- December 31, 2024

FREE GOODS REDEMPTION: 1. Go to "http://beyes.ca/en/redeems/new" 2. Fill out the form and submit (Promo code: CA0424) *Free goods must be of equal or lesser value and cannot be combined with any other offers. All offers will require a proof of purchase dated from October 1 to December 31, 2024 and must be reflected on one invoice. Offers must be redeemed no later than January 15, 2025. Please allow 4 to 8 weeks for promotion to be processed. All brands are holders of their respective trademarks.

Beyes+

Surgical 45 Handpieces

- 45° Head Design
- Rear Air Exhaust
- Stream water
- Swivel and Quick Disconnect
- 1 Year Warranty

M200: Non-Optic

- (13116) 4 Hole Backend
- (13122) Beyes® QD Backend



\$586/ea

M800: LED

- (18887) 4 Hole Backend
- (13165) NSK® Backend
- (18885) Beyes® PD Backend
- (19708) Beyes® QD Backend
- (13172) Star® Backend
- (13160) Kavo® Backend



\$796/ea **2+1 FREE = \$530⁶⁷/ea**

Beyes+

Maxso® M200E Smart

- Non-Optic
- Single Spray
- Push Button
- Stainless Steel
- 6 Months Warranty



(13138) Midwest® 4 Hole

\$238/ea **5+1FREE = \$198³³/ea**

Maxso® X200 Smart

- Fiber-Optic
- Push Button Chuck
- Micro-tex Surface
- Triple Spray
- Connect directly to Kavo® Multiflex Coupler
- 1 Year Warranty



Backend	Mini Head
NSK®	(13068)
KAVO®	(13133)

\$626/ea **3+1 FREE = \$469⁵⁰/ea**

Maxso® M200 Smart

- Non-Optic
- Push Button Chuck
- Micro-tex Surface
- Triple Water Spray
- 1 Year Warranty



Backend	Mini Head
4 Hole	(13115)
Beyes® PD	(13183)
Beyes® QD	(13120)
Star®	(13132)

\$312/ea

Maxso® Low Speed Package

- Includes:**
- Contra Angle-Push Button
 - Straight Nose Cone
 - Air Motor-NS/M4 Backend
 - 1 Year Warranty



(13548) Low Speed Package, E-type Connection

\$861/pk **Atop Exclusive: \$575/pk**

Repair Service: High Speed handpieces are one of the main tools in your operatory. We offer prompt repairs, excellent service and your choice of aftermarket turbines. - Free installation - 1 year warranty on the rotor - 6 months on ball bearing

| Handpieces



1 Year Warranty

Maxso® Contra-Angle

Screw-on
(14287) CS1-CH09

\$204/ea
👍 3+1FREE = **\$153/ea**



Snap-on
(14286) CS1-CH08

\$204/ea



Latch Type, CA Burs
(14281) CS1-CH04

\$196/ea
👍 3+1FREE = **\$147/ea**



Push Button, CA Burs
(14279) CS1-CH02

\$230/ea
👍 3+1FREE = **\$172⁵⁰/ea**



Push Button, Fiber-Optic,
Internal Spray
(19592) M29L-MH01

\$714/ea



Heads 👍

For Screw-on
(14270) CH09

\$134/ea
3+1FREE = **\$100⁵⁰/ea**



For Snap-on
(14269) CH08

\$134/ea
3+1FREE = **\$100⁵⁰/ea**



For Latch Type
For CA Burs
(14265) CH04

\$126/ea
3+1FREE = **\$94⁵⁰/ea**



For Push Button
For CA Burs
(14263) CH02

\$142/ea
3+1FREE = **\$106⁵⁰/ea**



Air Motor 👍

Without water spray
(13858) M20A-NS/M4

\$388/ea 3+1FREE = **\$291/ea**



Internal Water Spray 4
(13857) M20A-IS/M4

\$462/ea 3+1FREE = **\$346⁵⁰/ea**



Sheaths

1:1
(14257) CS1

\$90/ea
👍 3+1FREE = **\$67⁵⁰/ea**



4:1
(14258) CS4

\$408/ea



Straight Nosecone

For HP burs
(14441) S20A-NS*

\$243/ea

*Not recommended for prophyl angles such as Maxso EP12-NS



Repair Service: High Speed handpieces are one of the main tools in your operatory. We offer prompt repairs, excellent service and your choice of aftermarket turbines. - Free installation - 1 year warranty on the rotor - 6 months on ball bearing



Mix & Match / 1 Year Warranty
*3+1 Free of the same or lesser value

Maxso® X92

- 20:1 Implant Handpiece
- Non-optic
- Push Button
- CA Burs
- Fit into major implant motors
- 1 Year Warranty



(19470) **\$939/ea**

Maxso® M05A/M4

- 5,000 RPM
- 4-hole backend
- 1 year warranty
- For disposable Prophy Angles



(19057) **\$647⁴⁰/ea**

2+1FREE = \$431⁶⁰/ea

Maxso® EP12-NS

- 4:1 Hygiene Handpiece
- For Disposable Prophy Angle
- Connect Directly to Your Existing Motor



(19588) **\$351/ea**

3+1FREE = \$263²⁵/ea

EZ-Swivel® Couplers

- (13181) Beyes PD connection, 4 Holes
- (13146) Beyes QD connection, 4 Holes

\$186/ea

3+1 FREE = \$139⁵⁰/ea



- (13135) Kavo® connection, 4 Holes, Non-Optic
- (13136) Kavo® connection, 6 Holes, Fiber-Optic

\$328/ea

3+1 FREE = \$246/ea



- (13166) NSK® connection, 4 Holes, Non-Optic
- (17062) NSK® connection, 6 Holes, Fiber-Optic

\$328/ea

3+1 FREE = \$246/ea



Maxso® X97

- Push Button For CA burs
- CH02 and Shaft (Non-dismantle)
- Max Speed 40,000 RPM
- 1:1 Direct Drive

*Non-dismantle



(19403) **\$218⁴⁰/ea**

3+1FREE = \$163⁸⁰/ea

Beyes®

1 Year Warranty
*Replaced by Atop

Turbine

For Midwest®
(14157) Stylus
(14158) Stylus 540



(14154) Tradition–Push Button
(14153) Tradition–Latch



For Star®
(14151) 430



For W&H®
(14123) TA-98PB
(14124) TA-98LED/ LW



(14125) TA-96
(14126) TA-97



For NSK®
(14161) TI-Max X500
(14162) TI-Max X600
(14163) TI-Max X700



For Kavo®
(14137) 630,640



(14138) 632, 633, 639
642, 643, 645



(14129) 635



(14139) 647,649



(14140) 6000B

(14141) 6500B

(14142) 4500,5000



\$278/ea

**REVOLUTIONARY TECHNOLOGY
MADE EASY!**

Maxso[®] E800

Electric Handpiece System



Beyes[®] has made upgrading to the newest electric technology easy with the Maxso[®] E800. Equipped with a touch screen interface and 3 programmable preset speeds, this brushless electric micromotor system is designed with ultimate user-friendliness in mind. With customizable settings, the system is the perfect solution for all high-speed and low-speed applications. Its quiet motor delivers uncompromised power – featuring advanced rotational control technology, resulting in only the smoothest and steadiest operation. Integrate the Maxso[®] E800 into your practice with ease and start experiencing the advantages of electric today.



Benefits & Features:

- **Powerful:**
5.0 Ncm of torque
- **Steady Performance:**
Speed of rotations is controlled between 2,000 and 40,000min⁻¹
- **Smooth Operation:**
Torque ripple and heat reduction technology eliminates vibrations
- **Convenient & Durable:**
Smooth and easy to clean surface with autoclavable brushless motor
- **3 Programmable Memory Settings:**
Easily switch between speed presets for more efficient workflow
- **New Touch Screen Interface:**
Easily and quickly navigate through menu settings on a color LCD display panel

Portable Electric Micromotor System
(20200)
\$2,290

Built-in Control Unit
(20201)
\$2,290

Attachments:

Maxso[®] X99L

1:5 Contra Angle

- Anti-Heat System
- Ceramic Ball Bearing
- ISO E-Type Connection
- Quattro Spray
- Fiber-optic
- 12 Months Warranty



(14353)

Reg. \$1,360/ea

Maxso[®] S20A-IS Straight Attachment

- 1:1 Ratio
- Internal Spray
- For HP bur
- Straight Nose Cone Attachment



(19058) Non-optic, S20A-IS
\$298

(19593) Fiber-optic, S20A-IS/E6
\$538

Maxso[®] M29-MH01 Contra Angle Attachment

- 1:1 Ratio
- Internal Spray
- Push Button
- For CA Burs



(14357) Non-optic, M29-MH01
\$400

(SL3068) Fiber-optic, M29L-MH01
\$714

Packages:

MT8001KIT1

(1) E800P + (1) X99L Attachment



(19579)

Reg. \$3,358

MT8001KIT2

(1) E800P + (2) X99L Attachment



(19578)

Reg. \$4,198

*All offers will require a proof of purchase dated from October 1 to December 31, 2024 and must be reflected on one invoice. Offers must be redeemed no later than January 15, 2025. Please allow 4 to 8 weeks for promotion to be processed. All brands are holders of their respective trademarks.

October 1- December 31, 2024



TORNADO X AIR DRIVEN HIGH SPEED ★

ULTIMATE RELIABILITY

60 years of know-how and passion is the secret that leads Bien-Air Dental today to offer exceptionally reliable products. Discover all our expertise and attention to detail in the new TORNADO X turbine.

- Accu-Chuck PreciPlus™ bur-locking and rotation drive mechanism
- Accu-Spray with LED illumination
- Sealed Head™ contamination control
- Cool Touch™ safety
- Custom-designed ceramic ball bearings
- Freedom movement
- **5 Year Warranty**



(19940) Tornado X LK

Reg. \$2,999

Sale: \$2,499⁵⁰

LUBRICARE MAINTENANCE SYSTEM ★

SIMPLIFIED MAINTENANCE

Quick, simple and economic - this perfectly sums up the Lubricare maintenance device, when used with Bien-Air's Spraynet and Lubrifluid products, with each spray specifically designed for a phase in the maintenance cycle: Spraynet, for dissolving impurities and cleaning the instrument both inside and out, and Lubrifluid, for effective lubrication of instruments. Lubricare and Bien-Air maintenance sprays support the daily use of your instruments, guaranteeing impeccable maintenance, optimal operation and an extended service life.

- 2 Year Warranty



(19932) Lubricare Maintenance system

Reg. \$3,735

Sale: \$2,999

(19935) Spraynet, Cleaning, 500 ML

Reg. \$109.90

(19936) Lubrifluid, Lubricating, 500 ML

Sale: \$106¹⁴

(19933) Oil Pad (5 Pack)

Reg. \$16.63

(19934) Tray Filter

Sale: \$15¹²

OPTIMA ELECTRIC MOTOR SYSTEM ★

SIMPLICITY IS A COMPETITIVE ADVANTAGE

- For all Restorative applications
- No installation required
- MCX Motor Base Speed: 1,000-40,000 rpm
- With only one contra-angle, can achieve speeds of 5,000 - 200,000 rpm
- High consistent torque MCX LED Motor
- Upgrade any dental unit from air to electric
- 3 Year Warranty

(19938) MCX-LED

White, Portable

Reg. \$2,910.60

Sale: \$2,399



(19939) EVO15

Attachment 1:5, Electric Handpiece, 2 Year Warranty

Reg. \$2,949.80

Sale: \$2,590



(19937) MCX w/ touchpad, Built-In

Reg. \$3130.60

Sale: \$2,846

PROIMPLANT IMPLANTOLOGY SYSTEMS ★

ULTIMATE IMPLANTOLOGY

- For placing implants
- Preprogrammed operating sequences of top implant brands
- Integrated irrigation pump
- MX-I LED Motor
- High torque
- Ceramic bearings
- 2 Year Warranty



(19941) Proimplant Set

(Control + Motor + 20:1 Handpiece)

*Credit card payments please add 3% processing fee.

Reg. \$7,336.36

Sale: \$6,669⁴²

(19942) 20:1 Micro-Series

Implant Handpiece KM, Fiber Optic

Reg. \$3,532.22

Sale: \$3,211¹¹



Unwrapped FAST / 134°C 7 min	Wrapped Vacuum / 134°C 15 min	Wrapped Vacuum / 121°C 45 min
---	--	--

Enbio S
World's fastest autoclave.
Vacuum + drying.

(13982) Enbio 🚚 ⭐

👍 **\$4,599**

BONUS: (\$274 Value)

- Atop Sterilization Pouches (3.5 X 9)
- Beyes Class 5 Integrator
- Bowie Dick Test

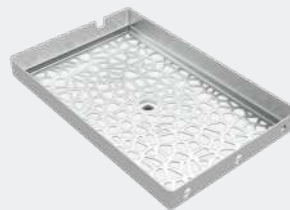
Valid October 1- December 31, 2024



Capacity

Load capacity per process

x8



28×18×3.5cm

Max. packages amount (circa)	8
Max. recommended batch weight	1.1 lb
Process chamber volume	2.7 l



Power Supply

Enbio works with any typical electrical outlet.



Water Supply

Enbio uses distilled water from external tank.



Data Archiving

All process data are automatically written to a USB disk.



Process Reports

Dedicated software for process data reading and printing.

Beyes

CANAVIEW®
Intraoral Camera

An excellent communication tool that improves understanding and interaction with patients. It provides visual evidence that you need to educate patients and make more accurate diagnoses. Boasting a true autofocus and intuitive camera lighting system, this dental digital photography camera requires no manual adjustments and is easily shared between different examination rooms and chairs.



(19466)

- 1 Year Warranty
- Canaview Intra-oral Camera comes with a one-year replacement warranty against manufacturer defects
- Direct USB connection to computer
- Ultra-wide and non-spherical lens
- Innovative Anti-fog design
- Lightweight and simple to use
- Complimentary Image management software included
- Ability to integrate into every leading software such as:



\$1,198/ea

Beyes

Valid October 1- December 31, 2024

Slimax-C Plus®
LED Curing Light System

- Powerful up to 2000 mW/cm2 (±10%)
- Built-in Digital Radiometer
- 3 Modes: Full Power, Ramping, Pulsing
- Rechargeable Lithium-ion Battery
- Cordless Design
- 5-Second Curing
- 1 Year Warranty

- (14360) Blue
- (14362) Pink
- (14364) Silver



\$838/ea **1+1 FREE = \$419/ea**

Accessories

- (12793) Curing Light Guide-Black **\$120**
- (12818) Tip Shield 8mm (pack of 3) **\$10**
- (12819) Eye Protection Shield **\$12⁹⁵**



*Free goods must be of equal or lesser value and cannot be combined with any other offers. All offers will require a proof of purchase dated from October 1 to December 31, 2024 and must be reflected on one invoice. Offers must be redeemed no later than January 15, 2025. Please allow 4 to 8 weeks for promotion to be processed. All brands are holders of their respective trademarks.

Beyes

Masteri®
Class B Autoclave



Masteri –Trade In Special (See P7 for details)

- This Class B autoclave meets and exceeds the latest regulatory requirements so you can focus on your practice.
- FastMasteri delivers industry leading sterilized instruments in approximately 21 minutes.
- The built-in data logger saves time and money storing your data on a USB stick. Internal printer option available.
- Sterilization options are easily accessible with the intuitive touch display to enhance user experience.

21 Minute Cycle 25 Months Warranty



(19323) 18L
\$7,330/ea



(19324) 23L
\$8,398/ea

*Credit card payments please add 3% processing fee.

Beyes

CareMaster®
Automatic Handpiece Maintenance System

- Maximize the life span of handpieces
- Economical, efficient and time-saving
- Filtered air used to rotate the handpieces for safety
- Care for all handpiece brands.
- Disposable mist filtration system
- Detachable door for easy cleaning
- Easy replenishment of solution tank
- 1 year warranty

(13186) 2 Turbine & 1 E-Types
\$2,747⁴⁸

(13188) 1 Turbine & 2 E-Types
\$2,545⁴⁴

Includes 1 Free Maintenance Oil (1L)



*Requires Airline Connection
*Coupler sold separately



Individual controlled



No Mess



Air Regulator

- (19305) Maintenance Oil (1 L) **\$126⁶⁴**
- (13191) Mist Filter Set (12 Pcs/Pack) **\$69**
- (13192) Oil Absorber Sheet **\$69**
- (17084) Oil Replenish Funnel with Filter **\$49⁹⁵**



Valid Oct 1 - Dec 31, 2024

TurboSensor®
Ultrasonic Scaler

New

The Backbone of Many Offices' Hygiene Department

"Finding a piece of equipment as durable, affordable, and effective as the TurboSensor is like finding the holy grail of dentistry."

– Monica Rogers, BSDH, RDH

- Versatile and dependable.
- Clearly marked intuitive controls.
- Automatically adjusts frequency to power any 25KHz or 30KHz Parkell insert.
- Autoclavable handpiece sheaths improve infection control.
- On-demand foot-controlled Turbo Power Boost for heavy calculus.
- Broad range of power easily accommodates both the sensitive patient with
- light deposit to the patient who hasn't had a professional scaling in years,
- as well as everyone in between.
- Expanded low-power "Perio" mode.



(12960) Pearl

- Includes:**
- Scaler unit
 - Two autoclavable handpiece sheaths
 - In-line water filter with spare disk
 - Quick-disconnect water connection
 - Foot controller



Reg: \$1,720 **Sale: \$1,620**



EasyProphy®
Air Polishing & Cleaning System

- Ergonomic Design
- Flexible in 360 degrees
- Swivel and Quick Release
- Cleaning with taste
- 1 Year Warranty



**Powder sold separately*

Quick Disconnect, Swivel

(12784) EasyProphy 200/QD

\$1,090/ea
+ Get 1 FREE QD Coupler

- (12785) H1, Handpiece with Nozzle **\$534**
- (12786) N1, easyProphy Nozzle **\$262**
- (12787) O-ring Set, 5Pcs/Pack **\$18.10**

Bosworth Propy Powder

- (18706) Mint, 284g/btl **\$49.95**
- (18707) Orange, 284g/btl **\$49.95**



Comfort-Sonic®
LED Piezo Scaler

- Detachable Handpiece
- Autoclavable Up to 135 Degrees
- Three Modes: Scaling, Perio, Endo
- Powerful with easy adjustable design
- Built-in Water Regulation
- Daylight LED: Maximize Visibility & Minimize Eye Fatigue



P6 Plus
**Water line required*

(14573) P6 Plus
Includes: 6 tips (EE1, 2xEG1, EG2, EG4, EP1)
(value at \$150)

\$838

(14572) P9
includes: 8 tips (EE1, EG1, EG4, EG5, EG6, EP1, EP3, EP4D),
1 tip holder, 2 water bottle (value more than \$400)

\$1,362



P9

LED Scaler Handpiece (Fiber Optic)

(14568) UHP-EF, Compatible with Beyes and EMS

\$348/ea



Scaler Handpiece (Non Optic)

(14566) UHP-E, Compatible with Beyes and EMS

\$296/ea



(14567) UHP-S, Compatible with Satelec

\$348/ea



Tip holder #1

(14680) **\$24**



Tip holder #2

(14681) **\$32**



Tip Wrench

(14648) WST



(14649) WEF



28/ea **5+ @ \$19⁹⁹/ea**

Sterilization Cassette

(14744) Holds one handpiece, torque wrench, endo wrench and tips

\$180



EMS* & Beyes* Compatible

Satelec* & NSK* Compatible

Scaling

Popular

used to remove calculus and plaque on supragingival, neck of teeth and hard calculus on the teeth point

Equivalent to EMS* Type B

used to remove supragingival heavy calculus

Equivalent to EMS* Type P

used to remove the calculus of supragingival, subgingival interdental calculus and plaque

Popular

Equivalent to EMS* Type A

used to remove all supragingival calculus and plaque

Equivalent to NSK* G1 SATELEC* #1

used to remove supragingival and neck calculus and plaque

Equivalent to EMS* Type C NSK* G2 SATELEC* #2

used to remove supragingival heavy calculus

used to remove dental crown and mend material

\$29.95/ea
Net: \$23⁹⁶/ea

(14586) E-G1	(14587) E-G2	(14678) E-G3	(14588) E-G4	(14589) E-G5	(14590) E-G6	(14605) E-G7
(14628) S-G1	(14629) S-G2	(14679) S-G3	(14630) S-G4	(14631) S-G5	(14632) S-G6	(14647) S-G7

Perio

\$32.95/ea
Net: \$26³⁶/ea

Popular

used to remove subgingival calculus.

Equivalent to EMS* Type PS

used to remove subgingival and deep perio calculus.

Equivalent to EMS* Type PDL3

used to level on the surface of endo during the periodontal flap surgery.

Equivalent to NSK* G4 SATELEC* #10P

used to remove subgingival calculus and interdental calculus.

can replace the traditional Greamer, used for preparing good endo jaws.

(14591) E-P1	(14592) E-P3	(14593) E-P3D	(14594) E-P4	(14595) E-P4D
(14633) S-P1	(14634) S-P3	(14635) S-P3D	(14636) S-P4	(14637) S-P4D

Left angled, to remove calculus from very narrow inter-root spaces and furcation. Left angled, diamond-coated, to remove calculus from very narrow inter-root spaces and furcation. Right angled, to remove calculus from very narrow inter-root spaces and furcation. Right angled, diamond coated, to remove calculus from very narrow inter-root spaces and furcation.

\$45.95/ea

Net: \$36⁷⁶/ea

(14606) E-P2L	(14608) E-P2LD	(14607) E-P2R	(14609) E-P2RD
(14658) S-P2L	(14650) S-P2LD	(14659) S-P2R	(14651) S-P2RD

Endo

Equivalent to EMS* Type H NSK* E6 SATELEC* #S07

Aer root canal cleaning, using the mechanism and heat energy of ultrasonic vibration to integrate the filling lateral condensation, to make sure the top of scaler tip touches the lateral condensation.

used to remove the calcification and bad ling material of pulp cavity, overhang pulp chamber.

Diamond coated, for re-treatments of extremely hard materials.

To remove calculus and temporary cements and broken instruments in the coronal third.

Diamond-coated, with enhanced cutting and abrasive power laterally. Specially useful for removing very hard materials on the canal wall.

\$36.95/ea
Net: \$29⁵⁶/ea

(14598) E-E3	(14599) E-E3D	(14611) E-E4D	(14612) E-E5	(14613) E-E5D
(14640) S-E3	(14641) S-E3D	(14653) S-E4D	(14654) S-E5	(14655) S-E5D

NITI U-File

6 Pcs/Pack

\$30

Net: \$24/pack

- (14672) #15
- (14673) #20
- (14674) #25
- (14675) #30
- (14676) #35
- (14677) #40

(20° Angle Holder)

for: NITI K-Files, usually used for premolar root canal cleaning, sterilizing and taking out the stem in root canal.

(95° Angle Holder)

for: NITI K-Files, usually used for distomolar root canal cleaning, sterilizing and taking out the stem in root canal.

Burs holder, used to expand root canal and grind teeth.

Burs holder, used to expand root canal and grind teeth.

(14596) E-E1	(14597) E-E2	(14614) E-E8	(14615) E-E9
(14638) S-E1	(14639) S-E2	(14656) S-E8	(14657) S-E9

Restorative

Upper Hemispherical ball sprayed finishing with diamond grain, to remove the carious teeth without damaging the adjacent teeth.

Ball diamond tip. To remove the carious teeth without damaging the adjacent teeth.

Lower hemispherical ball sprayed finishing with diamond grain, to remove the carious teeth without damaging the adjacent teeth.

Half ball diamond tip. Set 45 to the left, to remove the carious teeth without damaging the adjacent teeth.

Half ball diamond tip. Set 45 to the right, to remove the carious teeth without damaging the adjacent teeth.

\$48/ea
Net: \$38⁴⁰/ea

(14601) E-SB2	(14600) E-SB1	(14602) E-SB3	(14603) E-SBL	(14604) E-SBR
(14643) S-SB2	(14642) S-SB1	(14644) S-SB3	(14645) S-SBL	(14646) S-SBR

Gutta-percha Obturation System

GPRO® P1

Gpro P1 adopts wireless, horizontal type, temperature adjusting, and left or right hand operation design, endowing it with outstanding function and characteristics.

- 0.2 Second Heating Time
- Ergonomic Design
- High Precision Temperature Control
- High-performance Conversion System

GPRO P1, Heating Pen (19396) **\$1,090**
 GPRO F1, Filling Machine (19395) **\$1,090**
 GPRO S1 (F1 + P1 Set) (19397) **\$1,992**

Gutta Percha Bar Plus, 100 Bars (20259) **\$49.99**

Limited Quantities Available!



GPRO® F1

Gpro F1 adopts wireless, vertical type, and single button design, bringing easier obturation operation.

- Quick Heating within 15 Seconds
- 360° Rotatable Injection Needle
- Ergonomic Design
- Safer Protection Mechanism



**REVOLUTIONARY
TECHNOLOGY
MADE EASY!**



*All offers will require a proof of purchase dated from October 1 to December 31, 2024 and must be reflected on one invoice. Offers must be redeemed no later than January 15, 2025. Please allow 4 to 8 weeks for promotion to be processed. All brands are holders of their respective trademarks



ApexPilot®

Endo Motors

(19391) ApexPilot G1

- Imported Motor
- Wireless Rechargeable Battery
- Automatic Torque Calibrating
- Nimble Contra-angle

\$980



(19392) ApexPilot G2

- Connectable to Apex Locator
- High Performance Brushless Motor
- Efficient & Safe
- Lower Noise
- 6:1 Super Mini Contra-angle

\$984



(19393) ApexPilot G3

- Built-in Apex Locator
- Integrated Length Determination
- Plastic and Adjustable Contra-angle
- All-angle OLED Screen
- Maximum Compatibility

\$1,687



Accurator® A2

Apex Locator, Compatible with G2 Endo Motor

- More than accurate
- Newly upgraded algorithm makes it more stable and enables stronger anti-interference ability.
- Multi-frequency apical position technology guarantees accurate measuring even if there is blood or residual pulp in the root canal.
- Measurement results will not be affected by the tooth type.

(19394)

\$1,048

Endopilot®

- Operates continuously for more than 2 hours
- Memory for up to 5 programs.
- Charging interface is designed as MICRO USB.

(19446)

\$1,362





Effective October 1st - December 31st, 2024

DURAY®

Imaging Plate Scanner



Duray Image Plate Scanner enables fast and efficient image processing with outstanding image quality in just seconds to meet diagnostic needs.

Say goodbye to the hazardous and costly traditional intraoral x-rays. Converting to digital imaging can be this simple.

Powerful Processing

With an 8-core CPU and developed with advanced 14 nm LPC FinFET process technology, FPGA as a coprocessor, brings superior processing that is smoother and faster for instant and reliable diagnoses.



Smart Design

The 7-inch large touch screen offers a resolution of 800 x 1280 pixels and features an intuitive operational design as a 1-click system from standby to scanning and image viewing. The resulting images are ultra-high resolution with clear details and excellent contrast.



Compact Tabletop Design

With a footprint of only 0.13 square meters, Duray imaging plate scanner is a powerful solution for clinics of all sizes. Its compact size allows it to be set up for direct use chairside for efficient workflow.

Comfortable

Choose from 4 plate sizes of 0-3 to select the best fit for your patient's needs. Phosphor plates are soft and flexible to assure patient comfort and re-usable a countless number of times to maximize your investment.



(20229) Duray DC1

\$8,398

BONUS \$500 Atop Credit! (Credit applicable on next order.)



*Credit card payments please add 3% processing fee. All offers will require a proof of purchase dated from October 1 to December 31, 2024 and must be reflected on one invoice. Offers must be redeemed no later than January 15, 2025. Please allow 4 to 8 weeks for promotion to be processed. All brands are holders of their respective trademarks.

DURAY[®] V2

DC X-Ray Unit

State of the art DC technology, finest focal spot of 0.4, and a wide range of preset exposure settings ensure excellent image quality and a low radiation dose for your patients. See all the details you need for precise diagnosis. The light, solid and stable arm assures smooth movement and reliable positioning.



Automatic DAP Display

The built-in Dose Area Product allows dose monitoring, thus supporting safety procedures and patient radiation protection. The dose can be shown with every exposure on the control panel display.

Rectangular Beam Limiting Device

Reduce the patient dose by using the optional rectangular beam limiting device available in film size 0 and 2.

Excellent Image Quality

Finest focal spot of 0.4, advanced DC technology and a wide range of preset exposure settings ensure excellent image quality with every exposure.

Remote Solution

The wall mount and timer can be installed separately allowing to control the exposure from outside the X-ray room. This solution ensures radiation safety as well as easy installation and integration into your dental practice.

(20019) DURAY V2
60kV & 70kV, 50/60 Hz, 80cm arm length

\$6,826

ATOP EXCLUSIVE

Bundle of 2 for \$9,999

+ \$1,000 ATOP CREDIT

Special

Any Duray V2 purchased and installed by Atop will include 2 year of Harp Test*

*Free Harp inspection must be done by Atop and in the GTA area.

All offers will require a proof of purchase dated from October 1 to December 31, 2024 and must be reflected on one invoice. Offers must be redeemed no later than January 15, 2025. Please allow 4 to 8 weeks for promotion to be processed. All brands are holders of their respective trademarks.

Beyes*



DURAY® 2D & 2D CEPH

Duray® 2D

- Smart Backlight
- Integrated Touchscreen
- Advanced Sensor
- New Dynamic and Automatic Image Focusing

Duray® 2D CEPH

- One Shot Ceph
- Advanced Sensor
- Smart Backlight



(14194) DURAY 2D

Compared to \$31,900

Introductory Special:
\$24,880

(14195) DURAY 2D CEPH

Compared to \$52,200

Introductory Special:
\$40,710

Installation is subject to local regulations.

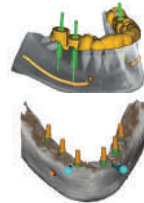
Beyes*



DURAY® 3D & 3D CEPH

Extraoral X-ray Series

- Touchscreen Next To Patient
- Quick Cephalometrics
- Mirroring
- Instantly Upgradeable
- Quick Positioning
- Smart Backlight
- Safe & Easy
- Automatic Metal Artifact Reduction (AMAR)
- Automatic Noise Reduction (ANR)
- Advanced Technology
- Plug & Play



(14190) DURAY 3D PAN

Compared to \$76,850

Introductory Special:
\$55,419

(14193) DURAY 3D CEPH

Compared to \$91,350

Introductory Special:
\$71,250

Installation is subject to local regulations.

Owandy
RADIOLOGY



I-Max & I-Max Ceph

- Lightweight : 120 kg/264lbs
- 24 2D programs including complete volume & condyles
- 9 ceph programs including low dose programs
- Quick installation and very easy to handle
- User-friendly interface
- Face to face patient positioning

*Installation is not included



Wall Mount

(17073) I-Max

Reg: \$29,999

(20017) I-Max Ceph

Reg: \$44,900

Please call for our promotions! 1-416-293-2868

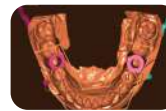
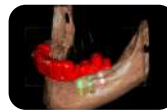
Owandy
RADIOLOGY



I-Max 3D & I-Max Ceph 3D

- Lightweight : 66kg/ 145 lbs for the wall-mounted 3D version and 125kg/275lbs for 3D ceph version
- 18 3D programmes including complete volume & condyles and airways
- Quick installation and very easy to handle
- User-friendly interface
- Face to face patient positioning
- Scan of 3D models

*Installation is not included



Wall Mount

(19444) I-Max 3D

Reg: \$78,900

(20228) I-Max Ceph 3D

Reg: \$94,900

Please call for our promotions! 1-416-293-2868



USB Direct Intra-oral Sensor

- Atraumatic & ergonomic
- Simple & automatic
- High-definition & precision
- Fully adapted to all your clinical practices
- Reliable & robust
- 2 Year Warranty

(13962) Opteo Digital Sensor Package

Includes:

- Size 1 Sensor x 1
- Size 2 Sensor x 1
- Size 2 Positioning kit x 1
- Imaging software Single x 1



Reg: \$13,000 **Sale: \$8,999**

Atop*

Digital Phosphor Plates

- Reusable
- Compatible with Gendex* Air Technique*, Kodak*

- (10848) Size 0
- (10849) Size 1
- (10850) Size 2
- (10851) Size 3

Reg: \$229.95

Sale: \$199²⁵ 4pcs/box: \$49⁸¹/pc



(18404) Phosphor Plate Storage Box

Reg: \$99 **Sale: \$89**

(18403) PSP Cleaning Plates, 12Pcs/Bag

Reg: \$49 **Sale: \$39**

Clear Plastic Carrier, 30Pcs/Bag

(19744) Size # 0 (19743) Size # 1 (19742) Size # 2

Reg: \$99.95 **Sale: \$72⁹⁵**



Atop*

Atop® 75

Ultrasonic Cleaner

- Large tank capacity of 2 gal./7.5 L
- External water draining connector
- Digital control, Digital Display, 1 to 30-minute full range timer
- 3 industrial grade ultrasonic transducers
- Heater with 5 temperature settings
- Unit Size: 7.75"x11"



Reg: \$1,199

(11176)

Digital Sensor Positioning Kits

Kit for a complete FMX

- 3 different holders
- 1 Aiming ring
- 1 Bite block

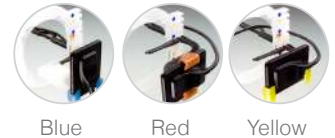


The Positioning Kits are compatible with:

Apixia, Air Techniques, Belmont, Camsight, Centaur, Digitales, Dentalmind Dentimax, E2V, Fimet, Fona, Gendex, Gray Faclon Instrumentarium, Kodak, Kavov, Mediadent, Myray, Owandy, Planmeca, Progeny, Suni, Schick, Sirona, Sota, Soredex, Sopro, Sigma, Toshiba, Trophy, Visiodent, Vatech, Villa Radiology Systems, XDR

(18455) Size #2

Reg: \$229 **Sale: \$189**



X-Ray Aprons

Material: Top side nylon, bottom side microfiber polyester

Lead	Code	Reg.	Sale
Adult Bib Apron w/ collar	(75051)	\$299	\$277
Thyroid Collar (For Adult Bib Apron)	(75056)	\$99.90	\$76.95
Child-size Bib Apron w/ collar	(75053)	\$229.00	\$218
Adult panoramic apron X-ray Apron	(75061)	\$338.00	\$313
Child-size panoramic apron	(75062)	\$269.00	\$232

Lead-Free	Code	Reg.	Sale
Adult Bib Apron w/ collar	(75051NL)	\$489.00	\$458.95
Adult Bib Apron wo/ collar	(75050NL)	\$408.95	\$386
Thyroid Collar (For Adult Bib Apron)	(75056NL)	\$112.95	\$82.96
Child-size Bib Apron w/ collar	(75053NL)	\$382.00	\$352
Adult panoramic apron	(75061NL)	\$639.00	\$599
Child panoramic apron	(75062NL)	\$488.00	\$467.95

*Final Sale. No Exchange/Returns.

Atop*

Atop® 25

Ultrasonic Cleaner

- Large tank capacity of 2.5 litres
- Digital control, LED display, 5 timer settings
- Industrial grade ultrasonic transducer
- Heater preset at 65°C (149°F)
- Unit Size: 11.4" x 8.8" x 7.3"



Reg: \$399.95 **Sale: \$225**

(10852)



TRAY-VAC Vacuum Former

- Light weight design
- Features quick lock frame
- Individual heat and vacuum controls

(11082) Reg: \$623.75 **Sale: \$539⁷⁹**



Vibrator #1A

- High Power, 3 speed, heavy duty
- Model with 4" diameter rubber platform.

(11087) Reg: \$250 **Sale: \$150⁹⁵**



X35 Micro Motor

- Improved Classic 0-35,000 RPM
- High Torque System

(11070) Reg: \$1,499 **Sale: \$1,265⁹⁵**



Thermaknife

Intro Kit Contains: Unit and knife edge pen

(11083) Reg: \$465 **Sale: \$399⁹⁵**



Dynamic Duo

- Heavy duty V-35 Micromotor
- 35K RPM High Torque System
- Buffalo Dynamic Duo V-35/ Thermo-Knife Combo Unit Complete

(11071) Reg: \$1195.95 **Sale: \$998²⁵**



Soft Eva

For bleaching, Soft, clear EVA, 5% x 5% sheets

(11078) 0.040, 12Pcs/box

Reg: \$25.95 **Sale: \$19⁹⁵**

(11079) 0.040, 100Pcs/box

Reg: \$107.50 **Sale: \$95⁹⁵**



DualTrim™

High Performance Rotary Dry Model, Trimming Machine

(11077) 1/2 HP, 10" Diameter, 120V AC

Reg: \$1,598 **Sale: \$1,259⁹⁵**



UV-MT Model Trimmer

Ultra-Violet Model Trimmer Kills Germs While it turns!

(17035) 1/3 HP, 10" Diameter, 120V AC

Reg: \$1,998 **Sale: \$1,573⁹⁵**



PrepStart

- PrepStart with foot pedal
- Installation Kit
- Handpiece & Nozzle Kit
- Instructions & Technique Manual
- 1lb Aluminum Oxide 27
- 1 year warranty

(17024) Air Abrasion System

Reg: \$5,198 **Sale: \$4,799**



MicroEtcher ERC-Laboratory

- Porcelain repair & Maryland Bridge repair.
- Etch all metals, composites, acrylics, porcelain & remove cement.
- Orthodontics - etch all bands & brackets. Remove cement.

(18791) MicroEtcher ERC Handpiece

Reg: \$429.99 **Sale: \$365⁹⁵**

(18794) MicroEtcher ERC Nozzle

Reg: \$123.99 **Sale: \$103²⁸**



QUARTER SPECIALS

2024-4TH
Oct. 1- Dec 31, 2024

MicroEtcher IIA

- Etch all metals, composites & amalgams for maximum bond strength
- Intraoral porcelain repair
- Pit & fissure prep
- Clean darkened grooves to reveal decay
- Prep incipient lesions and minor Class I & V
- Debride bur preps for best esthetics & bonds

(11831) Sandblaster

Reg: \$699 **Sale: \$599**



Interchangeable Nozzle (for the Microetcher II and IIA)

(18787) .048 Tip 60 deg. Slim Profile

Reg: \$144 **Sale: \$129**

(18790) .032 Pit & Fissure Tip 60 deg.

Reg: \$143.99 **Sale: \$129**





Air Compressors & Vacuums

New

BaseVac is the only Canadian manufacturer of Dental mechanical room equipment. Trusted by major Canadian dental institutions like the University of Toronto, University of British Columbia, George Brown College, and Durham College.

Please call for quote and more details !



Eco-Vac Dry Vacuum

Our EcoVac system provides the advantages of proven technology, durable construction, quiet operation and oil-free performance with the latest in water and energy-saving features.

Code	Users	Reg.	Sale
(14540)	2-3	\$14,998	\$12,998
(14543)	4-6	\$25,998	\$24,489
(14544)	5-7	\$16,997	\$14,996
(14539)	10-14	\$34,480	\$27,899



*Credit card payments please add 3% processing fee.



DuraMax Oilless Compressor

Code	Model	Users	Reg.	Sale
(18711)	C5	3-5	\$7,498.50	\$4,999
(18712)	D6	4-6	\$8,998.50	\$5,999

*Credit card payments please add 3% processing fee.



Syclone Amalgam Separators

1.5x larger

canister capacity.

- (19615) Amalgam Separator System **\$1,298.95**
- (19616) Replacement Canister Without Recycle Kit **\$499**



19615 ▶

▲ 19616



Elite Series Rocky Oilless Air Compressor

Code	Users	Reg.	Sale
(14520)	2-3	\$8,900	\$8,509
(19590)	3-4	\$11,418	\$10,972

*Credit card payments please add 3% processing fee.



Hg5 Amalgam Separators

- (14368) Solmetex Hg5 System
Accommodates up to 10 operatories

- 30" h x 11" w x 8" d
- 1 1/2" inlet & outlet piping
- Fernco® couplers
- Floor/Wall mount bracket
- Services 1-10 chairs

- (14373) Solmetex Hg5 System Mini
Accommodates up to 4 operatories

- 25" h x 11" w x 8" d
- 3/4" inlet & outlet piping
- Fernco® couplers
- Floor/Wall mount bracket
- Services 1-4 chairs

Reg: \$1,499.95 Sale: \$1,299⁹⁵



Goldenvac Stainless Steel Wet Vacuum Pump

- Investment cast stainless steel impeller and stainless steel housing with stainless steel base plate and manifold.
- Maximum durability to prevent wear from air abrasion and ceramic particles or hard water conditions.

Code	Users	Reg.	Sale
(14511)	3	\$5,110	\$4,999
(14513)	5	\$5,510	\$5,490
(14515)	6	\$10,450	\$7,980
(14532)	10	\$11,120	\$9,080

Tech-West's Exclusive Warranty:

- 10 years on all stainless steel components
- 5 years on the motor shaft
- 3 years on all other components

*Credit card payments please add 3% processing fee.



- (14186) Replacement cartridge with Recycling Disposal Pamphlet (NXT)
 - (14369) Replacement cartridge with Recycling Disposal Pamphlet(CC)
- Reg: \$599**





Valid October 1- December 31, 2024



LibertyBOSS

- ✓ No maintenance for up to 3 years
- ✓ No filters to change
- ✓ Meets current EPA standards for Mercury reduction



LIBERTY BOSS DRY STARTER KIT



Sale: \$1,499

LIBERTY BOSS WET STARTER KIT



Sale: \$1,499

LIBERTY BOSS REPLACEMENT



Sale: \$1,350



CleanLINZ

Quarter cleaner, clean 8 straight days

Biological cleaner-suction issues –prophy paste –pumice hardens overtime, clog , cleanlinz eats away the prophy paste so lines run smooth.

Sale: \$159



Amalgam Bucket

MARS Bio-Med provides a UN/DOT approved storage and shipping container with prepaid return shipping.

For the Recycling of:
Chair-side traps / Teeth with Amalgam / Spent Amalgam Capsules / Contact & Non-Contact Amalgam

Sale: 2.5 Gal - \$159 | 5 Gal - \$220



Experience the **AAA+**



- Access to free shipping
- Access to member exclusive discounts
- Access to exclusive specials

Your price: **\$99** per year*

*Terms and conditions apply.

Saliva Ejector Mirror

New

(20501) Saliva Ejector Mirror Kit
Includes 1 handle and 500 disposable mirror heads

Reg. ~~\$109.95~~ **Sale: \$99²⁵**



(20500) Saliva Ejector Handle
Includes 1 handle and 1 disposable mirror head

Reg. ~~\$29.95~~ **Sale: \$25⁹⁵**

Saliva Ejectors

Disposable Saliva Ejectors with Affixed Tips, Latex Free, 1000Pcs/Case

(18879) Clear w/ Blue Tips
(18880) White w/ White Tips

Reg. \$45.95

3+ @ \$42⁹⁵ Member: \$39⁹⁵



Made in Italy

Mixing Tips Standard

50Pcs/Pack

(10770) Green, For Impression Material
(10771) Pink, For Impression Material
(10769) Yellow, For Impression Material

Reg. \$29.99

6+ @ \$23⁹⁵ Member: \$20⁹⁵



10770 1:1 Green
10771 1:1 Pink
10769 1:1 Yellow

Mixing Tips Fine

25Pcs/Pack

(10772) Blue/Orange, For Temporary Crown Material
(10773) Blue/White, Long, For Cement
(10774) Blue/White, Short, For Cement
(10775) Brown/White, Short, For Cement

Reg. \$29.99

6+ @ \$22⁹⁵ Member: \$19⁹⁵



10772 10:1 Blue/Orange
10773 1:1 Blue/White
10774 1:1 Blue/White
10775 1:1 Brown/White

High Volume Evacuator Tips

Lowest Price!

100Pcs/Bag, 10Bags/Case

(19814) Vented, White

Reg. ~~\$49.99~~

Sale: \$39⁹⁹ Member: \$33⁹⁵



Mixing Tips

25Pcs/Pack

(19321) Brown/Black, Short, For Resin
(10776) Brown/White, Short, For Core
(10777) Brown/White with Intraoral Tips, For Endo

Reg. \$29.99

Member: \$25⁹⁵



19321 1:1 Brown /Black+Tip
10776 1:1 Brown /White+Tip
10777 1:1 Brown /White+Tip

Surgical Aspirator Tips

25Pcs/Pack

(10611) Large, Green, 1/4"
(10610) Standard, White, 1/8"
(10609) Small, Blue, 1/16"

Reg. \$8.99

6+ @ \$7⁹⁹ Member: \$7⁵⁶



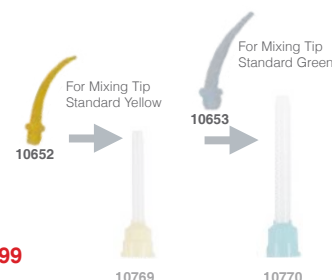
Intra Oral Tips

100Pcs/Pack

(10652) Yellow (10653) Clear

Reg. \$29.99

3+ @ \$23⁹⁵ Member: \$17⁹⁹



10652 For Mixing Tip Standard Yellow
10653 For Mixing Tip Standard Green
10769
10770



Free \$20 to \$500 Gift Card with purchase! Promotional products are qualified!
Please see P8 for more information.

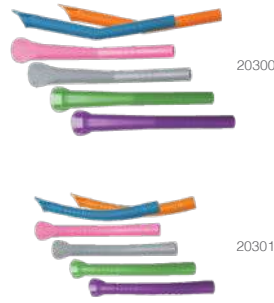
Euvac Suction Tips

12Pcs/Bag

- (20300) Universal Suction Tips
- (20301) Child Suction Tips

Color: Blue, Green, Pink, Gray, Purple, Orange, Assorted

Reg. ~~\$9.95~~ **Sale: \$8⁹⁹**



Cotton Tipped Applicators

1000Pcs/Box

- (12092) 3" Reg. ~~\$9.95~~ **Sale \$7⁹⁹**
- (12093) 6" Reg. ~~\$12.95~~ **Sale \$9²⁵**



Dental Bibs

500Pcs/Case

- (18877) Blue (18878) Lavender

Reg. \$39.95
Sale: \$26⁹⁹ Member: \$24⁹⁹



Dispensing Gun

- (10725) For HP Cartridges, 1:1/2:1
- (10726) For Crown & Bridge Material, 4:1/10:1

Reg. \$59.99
2+ @ \$49⁹⁹ Member: \$44⁹⁹



Composite Dispenser Gun

(12150)

Reg. \$39.99
2+ @ \$29⁹⁹ Member: \$26⁵⁹



Bouffant Caps

100 Pcs/Bag

- (19997) Blue, One Size Fits All

Reg. ~~\$39.95~~ **Sale: \$15⁹⁹**



Impression Material VPS

4x50ml Cartridges/Pack

- (18488) Light Body, Regular Set
- (18489) Heavy Body, Regular Set
- (18490) Light Body, Fast Set
- (18491) Heavy Body, Fast Set
- (18492) Bite Registration, Fast Set
- (19753) Medium Body, Regular Set

Reg. \$52.95
3+ @ \$42⁹⁵ Member: \$45⁹⁵



Non-Woven Gauze

Lowest Price!

5000Pcs/Case

- (19813) 2"x 2", 25 sleeves

Reg. ~~\$35.99~~
Sale: \$32⁹⁹ Member: \$27⁹⁹



Sterilization Indicator Tape

- (19967) 3/4", 60yards/roll

Sale: \$7⁹⁵ Member: \$6⁵⁰

- (19968) 1", 60yards/roll

Sale: \$9⁹⁵ Member: \$8⁵⁰



Disposable Prophy Angle

- 100pcs/Box
- (19054) 90 Degree Firm
- (19053) 90 Degree Soft

Reg. \$60
5+ @ \$42⁹⁹ Member: \$39⁹⁹



Ultrasonic / Enzymatic Tablets

- Ultrasonic Cleaning Solution
- Instrument Pre-Soak
- Evacuation Cleaner

- (19432) Dual Enzyme, Anti-Corrosion Formula, Fresh Mint Scent
- 64/box, 1 tablet makes 0.5 Gallon/2L

Reg. ~~\$49.00~~
Sale: \$45⁹⁵ Member: \$42⁹⁵





Easy Prophy Cup

(14063) Snap-on Regular, Latex-Free, 100Pcs/Box
(18022) Snap-on Soft, Latex-Free, 100Pcs/Box

Reg. \$12.95
5+ @ \$10⁹⁹ Member: \$9⁵⁰



(14956) Cups Screw-on, Regular, Latex-Free, 100pcs/Box
(14066) Cups Screw-on, Soft, Latex-Free, 100pcs/Box

Reg. \$32.90
5+ @ \$29⁹⁰ Member: \$22⁹⁵



(14067) Latch type Regular, Latex-Free, 100pcs/Box
(14068) Latch type Soft, Latex-Free, 100pcs/Box

Reg. \$30.95
5+ @ \$27⁹⁵ Member: \$23⁹⁵



Mandrels

Fit with 3M* Sof-Lex
(10714) 3Pcs/Pack, 1398RA

Reg. \$25.99
3+ @ \$21⁹⁹ Member: \$19⁷⁹



Dappen Dishes

200Pcs/Pack

(14966) Blue (10607) White
(10605) Green (10606) Lavender
(10608) Yellow

Reg. \$13.99
4+ @ \$11⁹⁹ Member: \$10⁷⁹



Disposable Prophy Paste Rings

200Pcs/Pack

(10613) Color Assorted 5 x 40

Reg. \$18.99 **Member: \$13⁹⁹**



Disposable Mixing Wells

(18021) 2-Well, 500Pcs/Box

Reg. \$38.99
4+ @ \$29⁹⁹ Member: \$26⁹⁹



Flexible Mixing Bowls

(10778) Small 4.5" x H3"
Reg. \$10.99

2+ @ \$8⁴⁹ Member: \$7⁹⁹



(10779) Medium 5" x H3
Reg. \$11.99

2+ @ \$9⁴⁹ Member: \$8⁹⁹



Ergonomic Spatulas

(12114) Standard, 7 1/4", random color

Reg. \$12.99 **Sale: \$12⁹⁵/ea**



Autoclavable Aluminum-Bur Block

(10643) 18-Bur Block, 18FG Hole, Silver
(10644) 27-Bur Block, 18FG+9RA Hole, Blue

Reg. \$49.99
5+ @ \$39⁹⁹ Member: \$35⁹⁹



(10628) Red Bur Block (15 FG Hole)
(10626) Blue Bur block (15 FG Hole)

Reg. \$26.95/ea
2+1FREE = \$17⁹⁷/ea



(10642) 30-Bur Block, 20FG-10RA Hole, Blue
Reg. \$49.99/ea

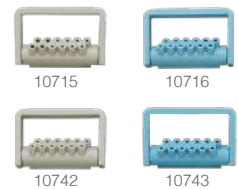
2+1FREE = \$33³³/ea



Autoclavable Plastic-Bur Block

(10715) Light Beige, 8FG+4RA Hole
(10716) Light Blue, 8FG+4RA Hole
(10742) Light Beige, 12FG Hole
(10743) Light Blue, 12FG Hole

Reg. \$12.65
5+ @ \$9⁹⁹ Member: \$8⁹⁹



Saliva Ejector Tips

(12144) Tips, Autoclavable grey, 1pc/pk
(14950) Tips, Autoclavable black, 1pc/pk

Reg. \$6.99
10+ @ \$5⁷⁵ Member: \$4⁹⁹





Free \$20 to \$500 Gift Card with purchase! Promotional products are qualified!
Please see P8 for more information.

Saliva Ejector Basket

(11690) 10pcs/pk

Reg. \$6.99

Member: \$5⁹⁹



Autoclavable Syringe Tips

(10676)

Reg. \$4.99

20+ @ \$4²⁵

Member: \$3⁹⁹



Curved Tips Syringes 412

(10655) 12cc, 50Pcs/Box

Reg. \$28.99

3+ @ \$25⁹⁵

Member: \$22⁹⁷



Dispensing Tips

100Pcs/Pack

- (10647) 18Ga. Pink, Cavity Liner & Bases & Composites
- (10648) 20Ga. Yellow, Composites & Sealants
- (10649) 22Ga. Gray, Sealants & Etchants & Cements
- (10650) 20Ga. Black, Composites & Cements
- (10651) 25Ga. Blue, Etchants

Reg. \$14.99

5+ @ \$12⁹⁹

Member: \$11⁶⁹



Aluminum Step Wedge

(19599) For X-Ray Unit

Reg. \$45.99

3+ @ \$29⁹⁹

Member: \$26⁹⁹



Lip Retractor

2pcs/pk

(18312) Double Ended (18313) Large (18314) Medium (18315) Small

Reg. \$7.90

10+ @ \$6⁹⁰

Member: \$6²⁰



(18312)



(18313)



(18314)



(18315)

Prophy Brushes

	Reg.	Sale	Member
(10719) Snap-On Flat (144/pack)	\$32.95	\$29 ⁹⁵	\$29 ⁷⁵
(10721) Screw-In Flat (144/pack)	\$39.95	\$36 ⁹⁵	\$36 ⁷⁵
(10722) Screw-In Tapered (100/pack)	\$61.95	\$42 ⁹⁵	\$42 ⁵⁵

Latex Free

(10720) Snap-On Tapered (100/pack)	\$49.95	\$31 ⁹⁵	\$31 ⁷⁵
(10723) Latch Type Flat (100/pack)	\$45.95	\$29 ⁹⁵	\$29 ⁷⁵
(10724) Latch Type Tapered (100/pack)	\$61.95	\$42 ⁹⁵	\$42 ⁵⁵



Micro Applicators

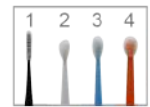
100Pcs/Bottle

- (12091) 1 Cylinder (12090) 2 Super Fine
- (12089) 3 Fine (12088) 4 Regular

Reg. \$7.99

4+ @ \$6⁹⁹

Member: \$6²⁹



Fluoride Trays

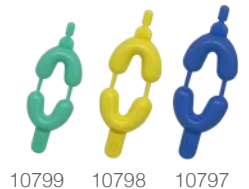
Double Arch, 50Pcs/Pack

- (10799) Small, Green
- (10798) Medium, Yellow
- (10797) Large, Blue

Reg. \$22.95

Sale: \$19⁹⁵

Member: \$17⁹⁵



Mouth Props

Lowest Price!

Autoclavable, 2Pcs/Box

(19724) Pedo (19725) Child (19726) Adult

Reg. \$23.90

Sale: \$16⁹⁵

Member: \$15⁹⁵



Mouth Props (DCI)

Non-Latex, Autoclavable, 2Pcs/Box

(11661) Small Pedo (11662) Child (11663) Adult

Reg. \$79.95

Sale: \$59⁹⁵

Member: \$57⁹⁵





Mirror Heads

(12242) #4 (12244) #5
Reg. \$3.99

12+ @ \$2⁹⁹ Member: \$2⁶⁹



Mirror Handle

(12241)
Reg. \$13.95

5+ @ \$10⁹⁹ Member: \$10²⁹



Mosquito Forcep

(18197)
Reg. \$45.90

2+ @ \$37⁹⁰ Member: \$34¹⁰



Mathieu

(18196)
Reg. \$57.60

2+ @ \$43⁹⁵ Member: \$39⁵⁶



College Pliers Standard Tips Serrated

(13315)
Reg. \$8.99

4+ @ \$6⁹⁹ Member: \$6²⁹



Intraoral Camera Sleeves

(10686) Poly Plastic, 500Pcs/Pack

Reg. \$35.95
4+ @ \$21⁹⁹ Member: \$19⁹⁹



Curing Light Sleeves

(10672) Covers Handle Only, 500Pcs/Box

Reg. \$57.95
4+ @ \$45⁹⁵ Member: \$42⁹⁵



(10673) Covers Tip to Handle, 500Pcs/Box

Reg. \$79.95
4+ @ \$62⁹⁹ Member: \$57⁹⁹

BUY 4 GET 1 FREE

Barrier Film

4" x 6", 1200 Sheets/Roll

(10619) Blue (10620) Clear

Reg. \$25.95 **Member: \$18⁹⁹**



Autoclavable Plastic Trays

Standard Flat, 13.5"x9.75"

(10841) Light Blue
(10843) White
(10842) Light Beige

Sale: \$9⁹⁵ Member: \$8⁹⁹



Disposable Air Water

Syringe Tips

(10618) Assorted, 250Pcs/Pack

Reg. \$34.95 **Member: \$25⁹⁵**



PSP Barrier Envelopes

For Digital Phosphor Storage Plate

(10712) 100pcs/Box, No. 0
(10709) 100pcs/Box, No. 1
(10713) 100pcs/Box, No. 2
(10710) 50pcs/Box, No. 3
(10711) 50pcs/Box, No. 4

Reg. \$21.95



Sterilization Pouch

Class 4, 200Pcs/Box



	Sale	Member
(19960) 2.25x4"	\$6⁵⁰	\$4⁹⁰
(19961) 2.75x9"	\$9⁹⁵	\$8⁹⁵
(19962) 3.5x5.25"	\$9⁷⁵	\$7⁹⁵
(19963) 3.5x9"	\$10⁹⁵	\$9⁵⁰
(19964) 5.25x10"	\$15⁵⁰	\$13⁹⁰





Free \$20 to \$500 Gift Card with purchase! Promotional products are qualified!
Please see P8 for more information.

3-In-1 Tray

- (10814) Posterior, Green, 36Pcs/Pack
- (10815) Quadrant, Yellow, 36Pcs/Pack
- (10816) Sideless, White, 36Pcs/Pack
- (10817) Anterior, Lavender, 36Pcs/Pack
- (10818) Full Arch, Blue, 24Pcs/Pack

4+1
FREE



Sale: \$49⁹⁵

Disposable Impression Trays

10Pcs/Pack

- | | |
|-----------------------------|------------------------------|
| (10820) No.1 Upper Large | (10821) No.2 Lower Large |
| (10822) No.3 Upper Medium | (10823) No.4 Lower Medium |
| (10824) No.5 Upper Small | (10825) No.6 Lower Small |
| (10826) No.7 Quadrant | (10827) No.8 Quadrant |
| (10828) No.9 Upper Anterior | (10747) No.10 Lower Anterior |
| (10819) Assorted | |

4+1
FREE

Sale: \$12⁹⁵



Autoclavable Napkin Holders

- | | |
|--------------------|-------------------|
| (10659) Light Blue | (10656) Dark Blue |
| (10657) Green | (10661) Red |
| (10662) White | (10660) Pink |
| (10658) Lavender | (10663) Yellow |

4+1
FREE

Reg. \$7.59

Member: \$4⁹⁹



Standard Articulating Paper Forcep

(12220)

Reg. \$11.99

Member: \$8⁹⁹

4+1
FREE



Self Locking College Pliers

(13325)

Reg. \$9.99

Member: \$7¹⁹

4+1
FREE



Tray Sleeves

(10670) 10.5"x 14", 500Pcs/Pack

Reg. \$39.95

Member: \$36⁹⁵

4+1
FREE



Pen Type Curing Light Sleeves

(10685) 500Pcs/Box

Reg. \$36.95

Member: \$25⁹⁵

4+1
FREE



Canaview Intraoral Camera Sleeves

(10708) With paper cover, 100Pcs/Pack

Reg. \$59.95

Sale: \$49⁹⁵ Member: \$45⁹⁵

4+1
FREE



Peel-N-Stick Light Guide Sleeves

Dia. Light Guides , 200Pcs/Pack

- (10687) Small, Fits 7-8mm
- (10688) Large, Fits 9-11mm

Reg. \$21.95

Member: \$12⁹⁹

4+1
FREE



Pre-Cut Syringe/HVE Sleeves

Pre-Cut 10"x2.5", 500Pcs/Box

- (10668) Blue
- (10669) Clear

Reg. \$25.95

Member: \$16⁹⁹

4+1
FREE



X-Ray Sensor Sleeves

500Pcs/Pack

- (10704) Large, 60mm x 200mm
- (10705) Medium, 42mm x 200mm
- (10706) Small, 35x200mm
- (10707) X Small, 38x200mm

Reg. \$25.95

Member: \$16⁹⁹

4+1
FREE



T-Style Light Handle Sleeves

(10674) 500Pcs/Box

Reg. \$29.95

Member: \$24⁹⁵

4+1
FREE



Chair Sleeves

(10675) Full Chair Sleeves, 81"x29.5", 202X72.5cm, 125Pcs/Pack

Reg. \$89.95

Member: \$85⁹⁵

4+1
FREE

(10677) Half Chair/Stool Sleeves, 27 1/2"x24", 225Pcs/Pack

Reg. \$79.95

Member: \$75⁹⁵





Metal Brackets

Reg. \$23.90

10+ @ **\$19⁹⁰** Member: **\$17⁹⁰**

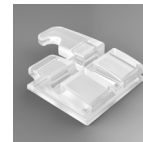


20pcs/kit	Roth		MBT	
	0.18	0.22	0.18	0.22
without hook, mesh base	(18207)	(18213)	(18210)	(18216)
3 with hook, mesh base	(18208)	(18214)	(18211)	(18217)
345 with hook, mesh base	(18209)	(18215)	(18212)	(18218)

Ceramic Brackets

Reg. \$33.90

10+ @ **\$29⁹⁰** Member: **\$26⁹⁰**



20pcs/kit	Roth		MBT	
	0.18	0.22	0.18	0.22
without hook, mesh base	(18219)	(18225)	(18222)	(18228)
3 with hook, mesh base	(18220)	(18226)	(18223)	(18229)
345 with hook, mesh base	(18221)	(18227)	(18224)	(18230)

Metal Self-Ligating Brackets

Reg. \$99.90

10+ @ **\$89⁹⁰** Member: **\$80⁹⁰**

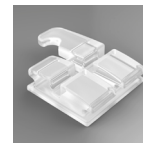


20pcs/kit	Roth		MBT	
	0.18	0.22	0.18	0.22
without hook, mesh base	(18244)	(18250)	(18247)	(18253)
3 with hook, mesh base	(18245)	(18251)	(18248)	(18254)
345 with hook, mesh base	(18246)	(18252)	(18249)	(18255)

Monocrystalline Brackets

Reg. \$159.90

10+ @ **\$139⁹⁰** Member: **\$125¹⁰**



20pcs/kit	Roth		MBT	
	0.18	0.22	0.18	0.22
without hook, mesh base	(18231)	(18237)	(18234)	(18240)
3 with hook, mesh base	(18232)	(18238)	(18235)	(18241)
345 with hook, mesh base	(18233)	(18239)	(18236)	(18242)

Niti Wire-Rectangular

10pcs/pk	Upper	Lower
0.016"×0.016"	(18268)	(18277)
0.016"×0.022"	(18269)	(18278)
0.017"×0.022"	(18270)	(18279)
0.017"×0.025"	(18271)	(18280)
0.018"×0.018"	(18272)	(18281)
0.018"×0.022"	(18273)	(18282)
0.018"×0.025"	(18274)	(18283)
0.019"×0.025"	(18275)	(18284)
0.021"×0.025"	(18276)	(18285)



Reg. \$9.90

10+ @ **\$8⁹⁰** Member: **\$8¹⁰**

Stainless Steel Wires-Rectangular

10pcs/pk	Upper	Lower
0.016"×0.016"	(19135)	(19136)
0.016"×0.022"	(19137)	(19138)
0.017"×0.025"	(19141)	(19142)
0.018"×0.018"	(19143)	(19144)
0.018"×0.025"	(19147)	(19148)
0.019"×0.025"	(19149)	(19150)
0.021"×0.025"	(19151)	(19152)



Reg. \$12.90

10+ @ **\$11⁹⁰** Member: **\$11¹⁰**

Niti Wire-Round

10pcs/pk	Upper	Lower
0.012"	(18286)	(18291)
0.014"	(18287)	(18292)
0.016"	(18288)	(18293)
0.018"	(18289)	(18294)
0.020"	(18290)	(18295)



Reg. \$8.90

10+ @ **\$7⁹⁰** Member: **\$7¹⁰**

Stainless Steel Wires-Round

10pcs/pk	Upper	Lower
0.012"	(19153)	(19154)
0.014"	(19155)	(19156)
0.016"	(19157)	(19158)
0.018"	(19159)	(19160)
0.020"	(19161)	(19162)



Reg. \$11.90

10+ @ **\$10⁹⁰** Member: **\$10¹⁰**



Free \$20 to \$500 Gift Card with purchase! Promotional products are qualified!
Please see P8 for more information.

MIM Single Tube

trumpeted opening

	0.18	0.22
1st Edgewise	(18256)	(18262)
1st Roth	(18257)	(18263)
1st MBT	(18258)	(18264)
2nd molar, Edgewise	(18259)	(18265)
2nd molar, Roth	(18260)	(18266)
2nd molar, MBT	(18261)	(18267)



4pcs/pk **Reg. \$7.90** **Reg. \$9.90**
10+ @ \$6⁹⁰ **10+ @ \$8⁹⁰**

1 per Quadrant **Member: \$6²⁰** **Member: \$8¹⁰**

Metal Chain Stainless Steel Napkin Holder

(12084)

Reg. \$6.99

5+ @ \$4⁹⁹ **Member: \$4²⁵**



Ease-o-tie

(19423) Mix-color, 36sticks/pk, 26pcs/stick, total 936pcs

Reg. \$13.99

Member: \$12¹⁹



(19184) Blue



(19185) Sky Blue



(19186) Cyan



(19187) Black



(19188) Green



(19189) Metal Light Green



(19191) Grey



(19193) Red Orange



(19194) White



(19195) Clear



(19196) Silver



(19198) Golden



(19199) Light Yellow



(19200) Yellow



(19201) Metal Dark Purple



(19202) Purple



(19203) Indigo



(19204) Light Pink



(19205) Pink



(19206) Red



(19207) Burgundy



(19208) Light Purple



(19211) Transparent Red



(19212) Light Blue



(19213) Metal Light Blue



(19214) Dark Blue



(19215) Metal Purple



(19216) Orange



(19217) Metal Green



(19218) Light Green



(19219) Nacarar



(19607) Light Purple

Standard Distal End Cutter T/C

(18508)

Reg. \$159.90

2+ @ \$149⁹⁰ **Member: \$134⁹⁰**



Hard Wire Cutter STR

(18198)

Reg. \$98.90

2+ @ \$92⁹⁰ **Member: \$83⁶⁰**



Crimpable Stops

(18301) Universal, Pkg of 10

Reg. \$5.90

10+ @ \$4⁹⁰ **Member: \$4⁴⁰**



Crimpable Hooks

Universal, Ball Top, Pkg of 10

(18296) 2.1mm	(18297) 2.7mm
(18298) 4.0mm	(18299) 5.5mm
(18300) 7.7mm	

Reg. \$5.90

10+ @ \$4⁹⁰ **Member: \$4⁴⁰**



Elastic

5000pcs/box

	3.5oz	4.5oz
1/8	(18302)	(18307)
3/16	(18303)	(18308)
1/4	(18304)	(18309)
5/16	(18305)	(18310)
3/8	(18306)	(18311)

Reg. \$59.95

Sale: \$49⁹⁵ **Member: \$38⁹⁵**



Teeth Guard Boxes

10Pcs/Pack

- (10748) Retainer Boxes
- (10749) Mouth Guard Boxes
- (10750) All Guard Boxes
- (10751) Denture Bath



Reg. \$13.90

5+ @ \$12⁹⁵ **Member: \$10⁹⁹**

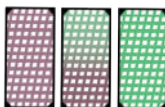
Valid October 1 - December 31, 2024

PROMOTIONS

Chemdye Bowie Dick | Type 2

(21226) Bowie Dick Test #2, 120/box

Sale: \$289



Germi-Safe In-Office Spore Testing

(12020) Germi-Safe Biological Indicators, 100 vials

Sale: \$299



Type 5 Integrator

(13647) Type 5 Chemical Integrating Indicator, Qty 250

Sale: \$69⁹⁹



E20 | Dental Waterline Treatment/Shock

(14069) E20 Dental Waterline Treatment, 236 ML

Sale: \$89⁹⁰



Dual Purpose Microbex Microvac

Evacuation System Cleaner+Ultrasonic Cleaning Solution

(13644) Microvac, 4L

Sale: \$67⁹⁹



ORO Clear | 0.12% Chlorhexidine Gluconate Alcohol Free Oral Rinse

(14040) Clear 500ML

Sale: \$19⁹⁹

(13253) Clear 4L

Sale: \$112⁹⁹



ORO Clense | 0.12% Chlorhexidine Gluconate Oral Rinse

(21228) Clense 500ML

Sale: \$17⁹⁹

(OC-S) Clense 4L

Sale: \$112⁹⁹



Ultra Swipes | Refills Pouch

(13240) Ultra Swipes Refills Pouch, 160 ct

Sale: \$21⁵⁰



Gzyme3 | Enzymatic Cleaning Solution

(11973) Gzyme3, 1L

Sale: \$105⁵⁰



GermiCide³ | Multi-Surface Disinfectant

(10153) Germicide3, Unscented, 3.78L

Sale: \$49⁵⁰



GermiCide³ | Multi-Surface Disinfectant

(14192) Germicide3 Refill, Unscented, Small, 160 ct

Sale: \$20⁵⁰



Genie Plus | Chair Disinfectant and Cleaner

(10526) Genie Plus Chair Cl. 4L

Sale: \$69

(14077) Genie Wipe Refill

Sale: \$18⁵⁰



Gobble Plus | Evacuation System Cleaner

(12694) 2L

Sale: \$88⁵⁰

(12695) 10L

Sale: \$329⁹⁵





Free \$20 to \$500 Gift Card with purchase! Promotional products are qualified!
Please see P8 for more information.



Innovating Tomorrow's Dentistry, Today.™

Exclusive Fall Specials 2024

October 1 – December 31 | Qualifies For Gift Cards

omniCHROMA® One-Shade Universal Composite



(13658) Syringe (13659) Blocker Syringe

Sale: \$142⁹⁹

(13656) PLT (13657) Blocker PLT

Sale: \$148⁵⁰



Can Mix & Match with OMNICHROMA BLOCKER. Limit 3 bonus items per doctor.

omniCHROMA Flow BULK One-Shade Bulk Composite

NEW!

(13652) Flow Bulk Syringe

Sale: \$102⁵⁰



Limit 3 bonus items per doctor.

omniCHROMA Flow One-Shade Flowable Composite



(13654) Flow Syringe

(13655) Blocker Flow Syringe

Sale: \$98⁵⁰



Can Mix & Match with OMNICHROMA BLOCKER Flow. Limit 3 bonus items per doctor.

TOKUYAMA UNIVERSAL BOND 8th Generation Universal Bonding Agent

(13645) Universal Bond Kits

Reg: \$209⁹⁰



Limit 1 bonus item per doctor. Refills* (Bond A & B)

TOKUYAMA UNIVERSAL BOND

**ALL MATERIALS,
ONE PROTOCOL**



DENTAL ADVISOR
TOP AWARD
INNOVATIVE
PRODUCT
OF THE YEAR



QUICK & EASY



RELIABLE



TRUE UNIVERSAL



SELF-CURE





Articulating Paper 200µ

(10929) Thin Blue, 300pcs/Roll

Reg. \$47.99 **Sale: \$45⁹⁵**



(BK1001) Refill Blue 1001

Reg. \$38.99 **Sale: \$33⁹⁰**



Articulating Paper

(10935) Thin Horseshoe Blue, 60mic, 150pcs
(10936) Thin Horseshoe Red, 60mic, 150pcs

Reg. \$74.95 **Sale: \$69⁹⁵**



Articulating Paper

(10931) Thin Horseshoe Red, 60mic, 50pcs
(10934) Ex. Thin, Red, 40mic, 15m/Roll

Reg. \$59.95 **Sale: \$46⁹⁵**



Articulating Paper 200µ

(10930) Thin Red, 200mic, 300pcs/Roll
(10933) Ex. Thin Red, 40mic, 200pcs

Reg. \$47.99 **Sale: \$45⁹⁵**



Arti-Check Articulating Paper 40µ

(10932) Micro-thin Blue, Booklets, 200pcs

Reg. \$47.99 **Sale: \$45⁹⁵**



Arti-Check Articulating Paper 40µ

(BK61) Micro-thin Blue, Pre-cut strips, 200pcs

Reg. \$19.99 **Sale: \$17⁹⁵**



Arti-Check Articulating Paper 40µ

(BK15) Micro-thin Blue, 16mm roll, 200pcs

Reg. \$25.99 **Sale: \$23⁹⁰**

Crosstex*

Articulating Paper

144 Strips/Box

- (11814) Combo Red & Blue
- (11822) Extra Extra Thin Blue
- (11820) Thick Blue
- (11819) Thin Blue
- (11821) Extra Thin Blue

Reg. \$17.95 **Sale: \$14⁹⁵**

Crosstex*

Articulating Paper

- (11817) Horseshoe Combo Blue & Red 72 Strips/Box
- (11816) Blue Red Combo Thin, Curved 0.03"71 um
- (11818) Precisely True Thin Blue 144 Strips/Box

Reg. \$19.95 **Sale: \$17⁹⁵**



DENTAMERICA®



Dentamerica Brushes / Cups

- (12023) Snap-On type, 6-Web, Medium Soft (403) **\$12⁹⁹**
- (12022) Screw-In Type, 6-Web, Medium Soft, (402) **\$22⁹⁹**
- (12021) Latch Type, 6-Web, Medium Soft, (401) **\$33⁹⁹**
- (19683) Latch Type, Flat End Brushes, White Bristles, (415) **\$52⁹⁹**
- (19682) Screw-In Type, Flat End Brushes, White Bristles, (416) **\$52⁹⁹**
- (19681) Composite Brush Instrument **\$12⁹⁹**



Polybite Trays

\$25⁹⁵

- (19688) Sideless, Posterior, 50/pkg
- (19687) Anterior, 35/pkg
- (19686) Posterior, 50/pkg
- (19685) Quadrant, 35/pkg
- (19684) Full arch, 30/pkg



Mylar Strip

(14468) 100 pieces/box **\$6⁷⁹**



Free \$20 to \$500 Gift Card with purchase! Promotional products are qualified!
Please see P8 for more information.

Lab Burs

Superior quality lab burs that are coated with gold titanium Nitride, which allows for a smoother finish and faster cutting time while lasting up to 10 times longer than conventional carbide burs

Carbide: Reg: \$25.95

Sale: \$19⁹⁹ 3+ @ \$16⁹⁸

Gold: Reg: \$29.95

Sale: \$25⁹⁵ 3+ @ \$24⁹⁵



Beyes

Diamond Burs FG 10pc/pack

Atop Exclusive
3+1 FREE

ROUND END TAPER



FLAT END TAPER



MODIFIED CHAMFER



FOOTBALL



EGG



NEEDLES



ROUND



FLAT END CYLINDER



MODIFIED BEVELED CYLINDER



BARREL

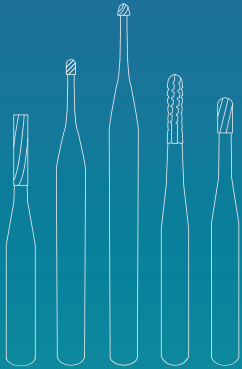


\$22⁸⁹ Member: \$20⁶⁰ 3+1 FREE = \$17¹⁷/pk

SC: Super Coarse C: Coarse M: Medium F: Fine EF: Extra Fine



Carbide Burs Coming soon....



Call us for details: 416-293-2868



All Lab Products

BUY 4 GET 1 AT NO CHARGE**

CHOOSE FROM: GREAT WHITE® LAB CUTTERS EXPRESS LINE AND EXPRESS LINE-H DIAMOND DISCS, DURADI™ AND LAZER SHARP™ CAD/CAM BURS

**Can mix and match shapes to equal or lesser value
No charge product to equal or lesser value

It's Our Birthday, But You Get the Gift!

October 1, 2024 - December 31, 2024



All Oral Surgery Burs

BUY 10 GET 2 Or

BUY 30 GET 10 AT NO CHARGE**

**Can mix and match shapes to equal or lesser value. No charge product to equal or lesser value.



©2024 SS White® All Rights Reserved. SS White®, Express Line®, and Great White® are registered trademarks of SS White Dental. DuraDi™ and Lazer Sharp™ are trademarks of SS White Dental. *Market research and test studies available upon request. **No charge goods must be of equal or lesser value. All offers are limited to stock on hand and are not valid on prior purchases. Offers may not be combined with any other sale, promotion, discount, code, coupon and/or offer. Sales promotion choice must be indicated on invoice sent to SS White® on applicable order. SS White® reserves the right to discontinue a promotion at any time. †SS White's 100% guarantee is on all of our products. If you are not completely satisfied with your purchase, SS White® will issue a full refund of the purchase price through your distributor. To claim no charge goods: Mail a copy of your invoice by January 31, 2025 to: SS White Burs, Inc., Attn: Promotions Department, 1145 Towbin Ave., Lakewood, NJ 08701 or email freegoods@sswhitedental.com. Please note that these are end-user doctor promotions and must be redeemed by the qualifying practice. Please allow 4-6 weeks for free delivery. SS White® does its best to ensure that its photos/illustrations are as true to color as possible. However, due to inconsistencies of various monitors, lighting sources, digital photography, and manufacturing lot variations, SS White cannot guarantee that the color that appears on your screen/printed material accurately portrays the true color of the received product. Images are intended as a guide only.

SS WHITE Dental
ANNIVERSARY **180** YEARS
— CELEBRATION —
Better Patient Outcomes | Improved Efficiency | Faster Practice Growth



Free \$20 to \$500 Gift Card with purchase! Promotional products are qualified!
Please see P8 for more information.

Our Birthday Celebration Continues With the Gift of Savings!

Specialty Carbides, Diamonds and All Procedural Kits

BUY 4 PACKS GET 1 PACK AT NO CHARGE**



CARBIDES: GREAT WHITE® ULTRA, ENDOGUIDE® AND ENDO SAFE END
DIAMONDS: PIRANHA®, REVELATION®, TDA AND GREAT WHITE® Z DIAMONDS

**Can mix and match shapes to equal or lesser value. Free product to equal or lesser value.
Offer excludes Standard Carbides, Great White® Gold and Trimming and Finishing Burs.

STERILE R AVAILABLE IN ROLLS OF 25

October 1, 2024 - December 31, 2024



©2024 SS White® All Rights Reserved. SS White®, Express Line®, and Great White® are registered trademarks of SS White Dental. DuraD™ and Laser Sharp™ are trademarks of SS White Dental. *Market research and test studies available upon request. **No charge goods must be of equal or lesser value. All offers are limited to stock on hand and are not valid on prior purchases. Offers may not be combined with any other sale, promotion, discount, code, coupon and/or offer. Sales promotion choice must be indicated on invoice sent to SS White® on applicable order. SS White® reserves the right to discontinue a promotion at any time. †SS White's 100% guarantee is on all of our products. If you are not completely satisfied with your purchase, SS White® will issue a full refund of the purchase price through your distributor. To claim no charge goods: Mail a copy of your invoice by January 31, 2025 to: SS White Burs, Inc., Attn: Promotions Department, 1145 Towbin Ave., Lakewood, NJ 08701 or email freegoods@sswhitedental.com. Please note that these are end-user doctor promotions and must be redeemed by the qualifying practice. Please allow 4-6 weeks for free delivery. SS White® does its best to ensure that its photos/illustrations are as true to color as possible. However, due to inconsistencies of various monitors, lighting sources, digital photography, and manufacturing lot variations, SS White cannot guarantee that the color that appears on your screen/printed material accurately portrays the true color of the received product. Images are intended as a guide only.

SS White Dental® 180 YEARS
CELEBRATION
Better Patient Outcomes | Improved Efficiency | Faster Practice Growth

SS-White® Burs 5pcs/pk, 25 in box

*More sizes are available, please call our office for more information.

EXPRESS LINE HP DIA

Reg- \$110.60

Sale: **\$99²⁵**

(16156) 801-020	(16157) 801-030	(16158) 805-020	(16159) 805-030	(16160) 805-040	(16161) 806-030	(16162) 845-020	(16163) 848-030	(16166) 859-030	(16167) 863-030
--------------------	--------------------	--------------------	--------------------	--------------------	--------------------	--------------------	--------------------	--------------------	--------------------

PIRANHA DIAMOND

Reg- \$119.95

Sale: **\$89⁹⁵**

(16190) 368-016F	(16365) 850-018F	(16366) 850-018M	(16378) 852-012VF	(16379) 855-014C	(16380) 855-014C-S	(16395) 855-018SC	(16408) 856-016C-SS		
(16409) 856-016F	(16410) 856-016M	(16426) 856L-014SC	(16427) 856L-016C	(16428) 856L-016C-S	(16429) 856L-016F	(16430) 856L-016M	(16444) 858-014C-S	(16445) 858-014F	(16446) 858-014M

PIRANHA DIAMOND

Reg- \$109.95

Sale: **\$99⁹⁵**

(16639) 368-020C	(16640) 368-020F	(16648) 368-023VF	(16657) 801-021M	(16658) 801-023C	(16659) 801-023F	(16666) 811-033SC	(16667) 811-037C		
(16674) 850-021C	(16675) 850-021F	(16676) 850-021M	(16677) 855-025C	(16678) 855-025M	(16679) 855-025M-S	(16680) 855-025C	(16702) 905-023F	(16707) 905-031M	(16710) 909-040C

REVELATION DIAMOND

Reg- \$74.95

Sale: **\$69⁹⁵**

(15700) 801-010	(15703) 801-018C	(15704) 801-021	(15705) 801-021C	(15724) 909-035C	(15725) 909-042C	(15732) 836-012C	(15733) 836-014C		
(15734) 837-012C	(15782) 862-012C	(15846) SE3F	(15847) SE3VF	(15848) SE6F	(15853) 7901-009VF	(15854) 7404-014F	(15855) 7404-014VF	(15904) 811-033C	(15905) 811-033SC
(15906) 811-037C	(15924) 845KR-018C	(15925) 845KR-018M	(15926) 845KR-018M-SS	(15932) 847-012SC	(15934) 847-016M	(15936) 847-018C-S	(16119) KS3-SC	(16122) 850-014M-RA	(16127) 801-023F-RA

Midwest® Burs

4+1FREE

	ROUND										PEAR										WHEEL	INVERTED CONE										STRAIGHT FISSURE FLAT END, PLAIN					FLAT END, PLAIN													
US NO	1/4	1/2	1	2	3	4	5	6	7	8	10	1/2P	1P	2P	4P	329	330	330L	331	331L	332	332L	14	331/2	34	35	36	37	37L	38	39	56	57	57L	58	59	169	169L	170	170L	171	171L								
FG	•	•	•	•	•	•	•	•	•	•	•	•	•	•	•	•	•	•	•	•	•	•	•	•	•	•	•	•	•	•	•	•	•	•	•	•	•	•	•	•	•	•	•	•	•	•	•			
SS																																																		
HP																																																		
RA																																																		
GW			2R	4R		6R		8R						2P			330		1						34	35		37																						
GW SL						6RSL											330S		1S																															

	STRAIGHT FISSURE FLAT END, CROSSCUT								ROUND END PLAIN			ROUND END CROSSCUT			END CUT	AMALGAM PREP				TAPER FISSURE FLAT END, CROSSCUT				ROUND END, PLAIN																												
US NO	556	556L	557	557L	558	558L	559	560	561	562	563	1156	1157	1158	1556	1557	1558	956	957	244	245	246	256	257	271	699	699L	700	700L	701	701L	702	703	1170	1170L	1171	1171L															
FG	•	•	•	•	•	•	•	•	•	•	•	•	•	•	•	•	•	•	•	•	•	•	•	•	•	•	•	•	•	•	•	•	•	•	•	•	•	•	•	•	•	•	•	•	•	•	•	•	•	•		
SS																																																				
HP																																																				
RA																																																				
GW	556	557		558											1557	2				245										701	702																					
GWS		557S															2S																																			
GW SL		557SL																																																		

SPECIALTY BURS								
SURGICAL/ENDO LENGTH								
US NO	2	4	8	8	557	558	1557	702
FG	•	•	•	•	•	•	•	•
RA	•	•	•	•	•	•	•	•

	COMPOSITE FAT	ROUND				FLAME	CONE	INVERTED TAPER	FINISHING BURS EGG SHAPE		STRAIGHT	EXTRA LONG TAPER	TAPER	BULLET	NEEDLE																																			
US NO		7002	7004	7006	7008	7104	7106		7404	7406	7408	7572	7583	7642	7664		7801	7802	7901	7902	7903																													
12 BLADE	•	•	•	•	•	•	•	•	•	•	•	•	•	•	•	•	•	•	•	•	•	•	•	•	•	•	•	•	•	•	•	•	•	•	•	•	•	•	•	•	•	•	•	•	•	•	•	•	•	•

SURGICAL

5Pcs/Pk

- (11355) FG, Surgical - 2
- (11356) FG, Surgical - 4
- (11357) FG, Surgical - 6
- (11372) FG, Surgical - 8
- (11360) FG, Surgical - 558
- (11359) FG, Surgical - 557
- (11362) FG, Surgical - 702
- (11358) LA - 2 Surgical
- (11364) LA - 4 Surgical
- (11365) LA - 6 Surgical
- (11366) LA - 8 Surgical

Reg. \$18.95

Sale: \$16⁹⁵ Net. \$13⁵⁶

CARBIDE BURS

10Pcs/Pk

- (11090) FG - 1/4
- (11091) FG - 1/2
- (11092) FG - 1
- (11093) FG - 2
- (11094) FG - 3
- (11095) FG - 4
- (11096) FG - 5
- (11097) FG - 6
- (11098) FG - 7
- (11099) FG - 8
- (11114) FG - 34
- (11115) FG - 35
- (11116) FG - 36
- (11117) FG - 37
- (11120) FG - 39
- (11121) FG - 56
- (11122) FG - 57
- (11124) FG - 58
- (11151) FG - 169
- (11155) FG - 171
- (11146) FG - 245
- (11147) FG - 246
- (11148) FG - 256
- (11106) FG - 330
- (11108) FG - 331
- (11105) FG - 329
- (11110) FG - 332
- (11126) FG - 556
- (11128) FG - 557
- (11130) FG - 558
- (11159) FG - 700
- (11161) FG - 701
- (11163) FG - 702
- (11164) FG - 703
- (11137) FG - 1156
- (11138) FG - 1157
- (11139) FG - 1158
- (11140) FG - 1556
- (11141) FG - 1557
- (11142) FG - 1558
- (11167) FG - 1171

Reg. \$19.95 **Sale: \$17⁹⁵ Net. \$14³⁶**

CARBIDE BURS SHORT/LONG

10Pcs/Pk

- (11254) LA - 1
- (11253) LA - 1/2
- (11255) LA - 2
- (11256) LA - 3
- (11257) LA - 4
- (11258) LA - 5
- (11259) LA - 6
- (11260) LA - 7
- (11261) LA - 8
- (11277) LA - 35
- (11278) LA - 36
- (11290) LA - 557

Reg. \$21.95

Sale: \$18⁹⁵ Net. \$15¹⁶

- (11178) FG, SS - 4
- (11189) FG, SS - 330
- (11209) FG, SS - 556
- (11211) FG, SS - 557

Reg. \$22.95

Sale: \$17⁹⁵ Net. \$14³⁶

- (11152) FG, Long - 169
- (11109) FG, Long - 331
- (11127) FG, Long - 556
- (11129) FG, Long - 557
- (11131) FG, Long - 558
- (11158) FG, Long - 699

Reg. \$19.95

Sale: \$17⁹⁵ Net. \$14³⁶

FINISHING BURS

5Pcs/Pk

- (11376) T&F - 7002
- (11378) T&F - 7004
- (11379) T&F - 7006
- (11380) T&F - 7008
- (11382) T&F - 7104
- (11383) T&F - 7106
- (11390) T&F - 7404
- (11391) T&F - 7406
- (11392) T&F - 7408
- (11395) T&F - 7642
- (11399) T&F - 7801
- (11400) T&F - 7802
- (11402) T&F - 7901
- (11403) T&F - 7902
- (11404) T&F - 7903

Reg. \$32.95

Sale: \$29⁹⁵ Net. \$23⁹⁶



Free \$20 to \$500 Gift Card with purchase! Promotional products are qualified!
Please see P8 for more information.

3M*
RelyX Luting Cement

(10138) Kit 16g Pwd. & 9ml Liq.
& 2 Mix Pads & Scoop

Reg-\$329 **Sale: \$299**



Kerr*
TempBond / TempBondNE

50g B. & 15g C.

(13441) TempBond NE

Reg-\$49.95 **Sale: \$45⁹⁵**



50Tips/Pk, 50 X 2.4g

(13495) TempBond Unidose
(13497) TempBond NE Unidose

Reg-\$94.95 **Sale: \$84⁵²**



Kerr*
Temp-Bond™ Temporary Crown/Bridge Cement

2 Syringe, 11.8g/each, Includes 20 Free Mixing Tips

(13502) Clear (13503) Original (13504) NE

Reg-\$129.95 **Sale: \$89⁹⁵**



Kerr*
MaxCem Elite

Self-Etch/ Self-Adhesive Resin Cement, 2X5g Syringe & 20 Tips

(13513) White (13506) White Opaque

Reg-\$189.95 **Sale: \$169⁹⁵**



(13505) Clear

Reg-\$189.95 **2+ @ \$149⁹⁹ Sale: \$169⁹⁵**

Pulpdent*
Lime - Lite Enhanced

(19601) Kit, 4 - 1.2ml Syringes
w/20 Applicator Tips

Reg-\$159.95 **Sale: \$129²⁵**



GC America*
GC Fujicem 2

(12958) 2x13.3g Cartridges

Reg-\$369 **Sale: \$299**



3M*
RelyX Luting Plus Cement

Resin Modified Glass Ionomer Cement

(10140) Refill, 2X11g Clicker

Reg-\$389.95 **Sale: \$366⁹⁵**



3M*
RelyX Unicem 2

1X11g Clicker, Self-Adhesive Resin Cement

(10186) A2 Universal

Reg-\$429.95 **Sale: \$404⁵⁹**

3M*
Ketac Cem

(12866) Intro Kit. 33g Pwd. & 12ml Liq.

Reg-\$199.95 **2+ @ \$149⁹⁵ Sale: \$169⁹⁵**

(12883) Cem, Aplicap Capsules, 50/pkg
(12865) Silver, Aplicap Capsules, 50/pkg

Reg-\$319 **Sale: \$294⁷³**

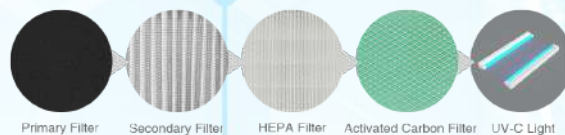


DuraMax
Extraoral Suction System

Removes contaminants produced during dental procedures including droplets, aerosols, blood, dust, and virus and uses the most advanced Quattro layer filtration system to kill viruses and bacteria absorbed with over 99.9% efficiency.

During treatments, a high volume of droplets and aerosols are produced by high-speed handpieces, ultrasonic scalers, and air water syringe that can linger in the air for up to two hours. This places practitioners and office staff health at risk of infections.

Efficient Filtration



(19983) DuraMax X1

\$2,921²⁸/ea



Warranty: 12 Months



Premier*
Hemodent

	Reg.	Sale
(14042) 10cc Btl.	\$36.95	\$29⁹⁵
(14043) 20cc Btl.	\$62.95	\$52⁹⁵
(14044) 40cc Btl.	\$95.95	\$92⁹⁵



Ultradent*
UltraPak Retraction Cord

(14565) #000, Black	(14564) #00, Orange
(14560) #0, Purple	(14561) #1, Blue
(14562) #2, Green	(14563) #3, Red

Reg. ~~\$28.95~~ **4+ @ \$23⁹⁵** **Sale: \$25⁹⁵**



3M*
ISO-Form Crowns Refill

5Pcs/Box

ISO Form Crown Molar Chart

Left - First Molar					Right- First Molar				
U69	U67	U65	U63	U61	U60	U62	U64	U66	U68
U79	U77	U75	U73	U71	U70	U72	U74	U76	U78
Left - Second Molar					Right- Second Molar				
L69	L67	L65	L63	L61	L60	L62	L64	L66	L68
L79	L77	L75	L73	L71	L70	L72	L74	L76	L78

ISO Form Bicuspid Crown Chart

Left - First Bicuspid					Right- First Bicuspid				
U49	U47	U45	U43	U41	U40	U42	U44	U46	U48
U59	U57	U55	U53	U51	U50	U52	U54	U56	U58
Left- Second Bicuspid					Right- Second Bicuspid				
L49	L47	L45	L43	L41	L40	L42	L44	L46	L48
L59	L57	L55	L53	L51	L50	L52	L54	L56	L58

Reg. ~~\$43.95~~ **Sale: \$39⁹⁵**

3M*
Protemp Plus

Refill, 67g Base/Catalyst & 16 Mixing Tips, blue; 6 Tips Free
(12879) A1 (12880) A2 (12881) A3

Reg. ~~\$259.95~~ **Sale: \$246⁹⁵**

Voco*
Structur 2 SC

76g/Cartridge
(14755) A1 (14756) A2 (14757) A3

Reg. ~~\$199.99~~ **Sale: \$189⁹⁵**



DMG America*
Luxatemp Automix Plus

76g/Cartridge, 15 Automix tips
(12056) A1 (12057) A2
(12058) A3.5 (12059) B1

Reg. ~~\$309.95~~ **Sale: \$299²⁵**



Premier*
Traxodent

(13313) Traxodent value pack,
25 syringes and 50 tips

Reg. ~~\$459.95~~ **Sale: \$399⁹⁵**



Mizzy*
Pressure Indicating Paste

	Reg.	Sale
(18713) 1.25oz	\$89.99	\$79⁹⁹
(18714) 2.25oz	\$99.95	\$89⁹⁵
(18715) Unit Dose Kit	\$159.95	\$129⁹⁵



Defend*
Tissue / Poly Headrest Covers

(12060) White, 10"X10", 500Pcs/Box
Reg. ~~\$57.95~~ **Sale: \$52⁹⁵**



(12061) White, 10"X13", 500 Pcs/Box
Reg. ~~\$64.95~~ **Sale: \$59⁹⁵**

White Swan*
Paper Tissue

(14173) Bathroom Tissue 2-Ply, 48 x 420 Sheets
(14172) Paper Towel 2-Ply, 24 x 90 Sheets
Reg. ~~\$49.95~~ **Sale: \$45⁹⁵**



Aurelia*
Headrest Covers

(13794) White 10"X10" 500Pcs/Box
Reg. ~~\$49.95/box~~



(13795) White 10"X13" 500Pcs/Box
Reg. ~~\$56.95/box~~

Polypropylene Headrest Sleeves

250Pcs/Box	Reg.	Sale
(18778) Small 9.5"X11"	\$29.95	\$19⁹⁵
(10679) Large 9.5"X14"	\$35.95	\$23⁹⁵





Free \$20 to \$500 Gift Card with purchase! Promotional products are qualified!
Please see P8 for more information.

Defend*
X-Ray Head Sleeves

(12026) Clear, 15"x26", 250Pcs/Box
Reg-\$69.95 **Sale: \$45⁹⁵**



Defend*
Tray Cover

(12034) White, 1000Pcs/Box
Reg-\$49.95 **Sale: \$42⁹⁵**



Medicom*
Cotton Rolls

(13799) Medium #2 1 1/2"x 3/8"(38mmx10mm),
2000Pcs/Case
Reg-\$37.95 **Sale: \$32⁹⁵**



Distech*
Procedure Earloop Face Masks
(ASTM Level 1)

(13844) Blue, 50Pcs/Pkg
Reg-\$12.99 **Sale: \$7⁹⁹**



Aurelia*
Shoe Covers

(13048) Size XL, Blue, 100/Bag
Reg-\$49.95 **Sale \$16⁹⁵**



Crosstex*
Comfort Plus® Premium Saliva Ejectors

100Pcs/Bag
(11827) White/White
(11824) Clear/White
(11826) White/Pink (Bubblegum Scented)
(11825) White/Green (Mint Scented)
Reg-\$8.95 **Sale: \$8²⁵**



Dental Health*
Dri-Angles

Plain With Silver
(12096) (12098) Large, 320Pcs/Box
(12097) (12099) Small, 400Pcs/Box
(12094) (12095) Combo, 200 small, 160 Large
Reg-\$27.95 **Sale: \$25⁹⁵**



Defend*
Gauze

(12031) 2"x2", 5000Pcs/Case **Reg. \$69.95 Sale \$65⁹⁵**
(12032) 4"x4", 2000Pcs/Case **Reg. \$79.95 Sale \$74⁹⁵**



Microcopy*
Neo Dry

Regular Reflective
(11769) (11771) Yellow, Small
(11768) (11770) Blue Large
Reg-\$35.95/box
4+ @ \$23⁹⁵/box Sale: \$27⁹⁵/box



Meta Biomed*
Gutta Percha Points

*Last Chance! While supplies last!



	Sliding	.04T Sliding	.06T Sliding	.04T Sliding Lengthmark
Size 15	(10005)	(10016)	(10036)	(10023)
Size 20	(10006)	(10017)	(10037)	(10024)
Size 25	(10007)	(10018)	(10038)	(10025)
Size 30	(10008)	(10019)	(10039)	(10026)
Size 35	(10009)	(10020)	(10040)	(10027)
Size 40	(10010)	(10021)	(10041)	(10028)
Size 45	(10011)	N/A	N/A	(10029)
Assorted 15-40	(10004)	(10015)	(10035)	(10022)
Size F	(10045)	N/A	N/A	N/A
Size FM	(10046)	N/A	N/A	N/A
Size M	(10047)	N/A	N/A	N/A
Reg.	\$10.97	\$17.57	\$17.57	\$18.67
5+1Free	Net \$9.14	Net \$14.64	Net \$14.64	Net \$15.56

Paper Points



	Sliding	.04T Sliding	.06T Sliding
Size 15	(10050)	(10058)	(10066)
Size 20	(10051)	(10059)	(10067)
Size 25	(10052)	(10060)	(10068)
Size 30	(10053)	(10061)	(10069)
Size 35	(10054)	(10062)	(10070)
Size 40	(10055)	(10063)	(10071)
Size 45	(10056)	(10064)	(10072)
Assorted 15-40	(10049)	(10057)	(10065)
Size C	(10073)	N/A	N/A
Size F	(10074)	N/A	N/A
Size M	(10075)	N/A	N/A
Reg.	\$9.87	\$15.37	\$15.37
5+1Free	Net \$8.23	Net \$12.81	Net \$12.81



3M* Cavit

Temporary filling material, 1 - 28g Jar

	Reg.	Sale
(12873) Cavit-P, Hardest	\$27.95	\$24.95
(12875) Cavit-G, Softest	\$27.95	\$24.95
(12874) Cavit-W, Medium	\$27.95	\$24.95



Premier* RC Prep

(14045) 18g/Jar

Reg. \$69.95 **Sale: \$52.95**



Endo Cushions* Fully Disposable Cushions

AUTOCLAVABLE UP TO 135°C(275°F)

(10654) Autoclavable Cushion Holder with Large and Small Rings

Reg. \$13.95 **Sale: \$9.95** 4+1FREE = \$7.96

(10800) Disposable Cushions with Cushion Holder, 50 Pcs/box

Reg. \$36.95 **Sale: \$29.95** 4+1FREE = \$23.96



Kerr* Pulp Canal Sealer (EWT/STD)

(13387) 10.5g Powder & 4ml Liquid, Standard Pack

(13388) Root Canal Sealer, 10.5g Pwd. &, 4ml Liq.

Reg. \$139.95 **Sale: \$129.95**



Hygenic* Endo Ice

(11765) 6oz. Can

Reg. \$40.95/can

Sale: \$37.95/can 4+1FREE = \$30.36/can



Sybron Endo* K3 Niti Files

21mm, 25mm, 30mm, and Assorted, 6Pcs/Pkg

Taper 0.2 #15-#45

Taper 0.4 #15-#60

Taper 0.6 #15-#60

Reg. \$119.95/pkg **Sale: \$108.95**



Mani* K-Files

6Pcs/Box

21mm, 25mm, 31mm, #06-#40

21mm, 25mm, 31mm, #45-#65

Reg. \$19.95 **Sale: \$14.95**



Monoject* Endodontic Needles

25Pcs/Box

(13538) 23Ga. X1-1/4" (13539) 27Ga. X1-1/4"

Reg. \$29.95 **Sale: \$26.95**



Kendall* Irrigation Syringe With Endo Needle (Monoject)

(13541) 23Ga x 1.25"100/Pkg

(13542) 27Ga x 1.25"100/Pkg

Reg. \$59.95 **Sale: \$58.95**



Mani* Gates Drill

32mm

(12579) #1

(12580) #2

(12581) #3

(12582) #4

(12583) #5

(12584) #6

28mm

(12573) #1

(12574) #2

(12575) #3

(12576) #4

(12577) #5

(12578) #6

28mm

(12592) #1

(12593) #2

(12594) #3

(12595) #4

(12596) #5

(12597) #6

32mm

(12598) #1

(12599) #2

(12600) #3

(12601) #4

(12602) #5

(12603) #6

6Pcs/Pkg

Reg. \$19.99 **Sale: \$16.95**



Meta Biomed* MD-Cleanser

While supplies last!

(10088) 17% Edta Solution

100 ml w/One Syringe and 3 Tips

Reg. \$22.95 **5+1Free = \$19.12/ea**



MD-Chelcream

(10087) 19% Edta Cream

2ea x 7g Syringe w/10 Tips

Reg. \$32.95 **5+1Free = \$27.45/ea**



Adseal

(10086) Resin based Root Canal Sealer

13.5g in Dual Syringe

Reg. \$46.95 **5+1Free = \$39.12/ea**



Meta Etchant

(10089) 37% Total Etching Gel,

13.5g in Dual Syringe

Reg. \$26.99 **5+1Free = \$22.49/ea**





Free \$20 to \$500 Gift Card with purchase! Promotional products are qualified!
Please see P8 for more information.

Impression Trays (Made in U.S.A)

- | | |
|------------------|------------------|
| (12261) UPPER XS | (12256) LOWER XS |
| (12259) UPPER S | (12254) LOWER S |
| (12258) UPPER M | (12253) LOWER M |
| (12257) UPPER L | (12252) LOWER L |
| (12260) UPPER XL | (12255) LOWER XL |



Solid

A	UPPER	U-1(XS)	U-2(S)	U-3(M)	U-4(L)	U-5(XL)
		A 52	54	58	59	63
B	UPPER	B 65	67	72	75	84

- | | |
|------------------|------------------|
| (12281) UPPER XS | (12276) LOWER XS |
| (12279) UPPER S | (12274) LOWER S |
| (12278) UPPER M | (12273) LOWER M |
| (12277) UPPER L | (12272) LOWER L |
| (12280) UPPER XL | (12275) LOWER XL |



Solid Denture

A	UPPER	U-1(S)	U-2(M)	U-3(L)	U-4(XL)
		A 58	63	64	68
B	UPPER	B 64	70	77	78

- | | |
|------------------|------------------|
| (12271) UPPER XS | (12266) LOWER XS |
| (12269) UPPER S | (12264) LOWER S |
| (12268) UPPER M | (12263) LOWER M |
| (12267) UPPER L | (12262) LOWER L |
| (12270) UPPER XL | (12265) LOWER XL |



Perforated

A	LOWER	L-1(XS)	L-2(S)	L-3(M)	L-4(L)	L-5(XL)
		A 50	53	57	66	60
B	LOWER	B 65	68	75	78	84

- | | |
|------------------|------------------|
| (12291) UPPER XS | (12286) LOWER XS |
| (12289) UPPER S | (12284) LOWER S |
| (12288) UPPER M | (12283) LOWER M |
| (12287) UPPER L | (12282) LOWER L |
| (12290) UPPER XL | (12285) LOWER XL |



Perforated Denture

A	LOWER	L-1(S)	L-2(M)	L-3(L)	L-4(XL)
		A 56	60	62	63
B	LOWER	B 65	72	75	83

Reg.\$16.95

Sale: \$14⁹⁵

4+1FREE = \$11⁹⁵

Autoclavable Impression Trays

5Pcs/Pack

- | | |
|-----------------------------|------------------------------|
| (10830) No.1 Upper Large | (10831) No.2 Lower Large |
| (10832) No.3 Upper Medium | (10833) No.4 Lower Medium |
| (10834) No.5 Upper Small | (10835) No.6 Lower Small |
| (10836) No.7 Quadrant | (10837) No.8 Quadrant |
| (10838) No.9 Upper Anterior | (10839) No.10 Lower Anterior |

Reg.\$18.95

Sale: \$16⁹⁵



(10829) Assorted, 10Pcs/Pack

Reg.\$32.95

Sale: \$27⁹⁵

Premier*

Triple Trays

- | |
|--|
| (14036) Anterior, 35Pcs/Pack |
| (14035) Posterior, 48Pcs/Pack |
| (14037) Quadrant, 40Pcs/Pack |
| (14038) Sideless Posterior, 48Pcs/Pack |



Reg.\$72.95

Sale: \$69⁹⁵

Waterpik*

Impression / Dual Trays



Master Trays

- | | |
|---|---|
| (14879) 1 - Large Upper | (14880) 2 - Large Lower |
| (14881) 3 - Medium Upper | (14882) 4 - Medium Lower |
| (14883) 6 - Small Lower | (14884) 7 - Partial - Upper Left, Lower Right |
| (14885) 8 - Partial - Upper Right, Lower Left | (14886) 9 - Anterior |

Reg.\$22.95



Tra-tens Trays

- | | |
|---|---|
| (14903) 1 - Small Upper | (14904) 2 - Medium Upper |
| (14905) 3 - Large Upper | (14906) 4 - Small Lower |
| (14907) 5 - Medium Lower | (14908) 6 - Large Lower |
| (14909) 7 - Anterior | (17023) 8 - Bilateral Upper Left, Lower Right |
| (14910) 9 - Bilateral Upper Right, Lower Left | |

Reg.\$20.95

Defend*

Bite Registration Material

2X50ml Cartridges & Tips

- | |
|-----------------------------------|
| (12028) Regular, 2-Minute Set |
| (12029) Fast, 30-Second Set |
| (12030) Super Fast, 30-Second Set |



Reg.\$59.95

Sale: \$49⁹⁵

3M*

Express

(10232) Standard Putty, 2Jar x 305ml



Reg.\$182.95

2+ @ \$149⁹⁵ Sale: \$169⁹⁵

Matech*

Kromatica

- | | | |
|-----------|---------|----------|
| 1Lb/Pouch | Regular | Fast Set |
| Cherry | (13293) | (13296) |
| Mint | (13294) | (13297) |
| Bubblegum | (13295) | (13298) |



Reg.\$16.95

Sale: \$13⁹⁵

20+ @ \$12⁹⁵

Defend*

Super Hydrophilic Vinyl Polysiloxane Impression Material

- | | | |
|-------------------|---------|----------|
| 4X48ml Cartridges | Regular | Fast Set |
| Light Body | (12039) | (12043) |
| Medium Body | (12040) | (12044) |
| Monophase Body | (12041) | (N/A) |
| Heavy Body | (12042) | (12046) |



Reg.\$59.95

Sale: \$56⁹⁵



Heraeus Kulzer*

Flexitime

2X50ml Cartridges & Tips
 (13622) Heavy Tray
 (13623) Correct flow



Reg.\$65.95 **Sale: \$62⁹⁵** 3+1FREE = \$47²¹

(13621) Easy Putty 600ml

Reg.\$149.95 **Sale: \$132⁹⁵**



Defend*

Putty

(12036) Regular set (12037) Fast Set

Reg.\$109.95 **Sale: \$89⁹⁵**



Waterpik*

Hold Impression Tray Adhesive

(14887) 2 x 14ml

Reg.\$36.95 **Sale: \$34⁹⁵**



3M*

Impregum F

(12863) Double Pack, 2x120ml Base & 15ml Catalyst, Medium Body

Reg.\$225.95 **Sale: \$215⁹⁵**

Impregum Penta

2x300ml Base & 60ml Catalyst
 (12862) Standard (12864) Soft

Reg.\$486.95 **Sale: \$447⁹⁵**



Crosstex*

Mixing Pads

(12170) 3"x3" Reg. \$6.99 6+@ \$5⁹⁹
 (12171) 3"x6", 100 sheets Reg. \$7.99
 (12172) 6"x6", 100 sheets Reg. \$9.99



Lascod*

Kromopan

(13291) 1Lb/Pouch-Fast Set

Reg.\$15.95 **Sale: \$14⁹⁵** 20+@ \$13⁹⁵



Fairfax*

Stabilok Dental Pins

Standard Kit, 20 Pins & 1 Drill

(12911) Titanium, Yellow, 0.021"
 (12910) Titanium, Orange, 0.027"
 (12913) Stainless Steel, Blue, 0.021"
 (12912) Stainless Steel, Green, 0.027"



Reg. \$55.95 **Sale: \$52⁹⁵**

Fairfax*

Stabilok Dental Pins Economy Kit

100 Pins & 5 Drills

(12915) Titanium, Yellow, 0.021"
 (12917) Titanium, Orange, 0.027"
 (12914) Stainless Steel, Blue, 0.021"
 (12916) Stainless Steel, Green, 0.027"



Reg. \$199.95 **Sale: \$189²⁵**

Coltene / Whaledent*

Para-Post

Size	Steel Post Refill	Titanium Post Refill	Drills	Steel Vented Posts
0.036	P244-3 13983	P284-3 13990	P42-3 13997	P44-3 14011
0.040	P244-4 13984	P284-4 13991	P42-4 13998	P44-4 14012
0.045	P244-4.5 13985	P284-4.5 13992	P42-4.5 13999	P44-4.5 14013
0.050	P244-5 13986	P284-5 13993	P42-5 14000	P44-5 14014
0.055	P244-5.5 13987	P284-5.5 13994	P42-5.5 14001	P44-5.5 14015
0.060	P244.6 13988	P284.6 13995	P42-6 14002	P44-6 14016
	10Pcs/Pkg	10Pcs/Pkg	3Pcs/Pkg	10Pcs/Pkg
	Reg. \$139.95 Sale: \$127.95	Reg. \$139.95 Sale: \$129.95	Reg. \$89.95 Sale: \$79.95	Reg. \$119.95 Sale: \$98.95

Coltene / Whaledent*

Para-Post

Size	Fiber White Posts	Plastic Impression Posts	Fiber Resin Esthetic Posts
0.036	F161-3 13975	P743-3 14844	PF171-3 14838
0.040	/	P743-4 14845	PF171-4 14839
0.045	F161-4.5 13976	P743-4.5 14846	PF171-4.5 14840
0.050	F161-5 13977	P743-5 14847	PF171-5 14841
0.055	F161-5.5 13978	P743-5.5 14848	PF171-5.5 14842
0.060	F161-6 13979	P743-6 14849	PF171-6 14843
	5Pcs/Pkg	20Pcs/Pkg	5Pcs/Pkg
	Reg. \$97.95 Sale: \$89.95	Reg. \$59.95 Sale: \$49.95	Reg. \$98.95 Sale: \$79.95

Premium plus*

Light Protective Hand Shield

(10641) 12.5cm x 26cm x 0.3cm

Reg.\$35.95/ea **5+@ \$24⁹⁵/ea** **Sale: \$29⁹⁹/ea**



Handpiece Color-code Bands

(11243) 36pcs/Bag, Assorted Colors

Reg.\$28.99/ea **Sale: \$26⁵⁰**





Free \$20 to \$500 Gift Card with purchase! Promotional products are qualified!
Please see P8 for more information.

Autoclavable Silicone Instrument Code Rings

Colour	Small, Fits #2 & #4 Handles	Large Fits #6,#7,#8 & Surgical instr.
Black	10761	10752
Light Blue	10764	10755
Dark Blue	10762	10753
Green	10763	10754
Purple	N/A	10756
Red	10766	10758
White	10767	10759
Yellow	10768	10760



Reg. ~~\$7.95~~

Sale: \$6⁹⁵

Beyes*

BeyesLube

Made in U.S.A, Synthetic Technology, Ultra-Formulation
(13701) 500ML
Reg. \$88.40



Modern Materials/Heraeus/Kulzer*

Dental Stone

HK-500
(13077) Golden, 25Lb (13079) Buff, 25Lb

Reg. ~~\$69.95~~ **Sale: \$64⁹⁵**

(13080) Buff, 45Lb (13078) Golden, 45Lb

Reg. ~~\$89.95~~ **Sale: \$79⁹⁵**



Kavo*/Scican

Spray for Handpiece

500ML
(13687) Kavo* (17032) Scican

Reg. ~~\$64.95~~ **Sale: \$54⁹⁵**

(13688) Nozzle for Kavo spray

Reg. ~~\$15.95~~ **Sale: \$12⁹⁵**



Medicom*

Denti-Care Prophy Paste In Jar

12oz./Jar

(13753) Coarse Mint (13754) Fine Bubble Gum
(13755) Medium Cherry (13756) Medium Mint



Reg. ~~\$29.95~~ **Sale: \$25⁹⁵ 4+1FREE = \$20⁷⁶**

Medicom*

Denti-Care Prophy Paste In Unidose

14oz./200 Unit Dose

(13764) Coarse Mint (13766) Fine Bubble Gum
(13767) Medium Cherry (13768) Medium Mint



Reg. ~~\$65.95~~ **Sale: \$62⁹⁵ 4+1FREE = \$50³⁶**

Germiphene*

Neutrarinse

2L/Btl., 2% Neutral Sodium Fluoride Rinse
(20911) Raspberry (20910) Mint



Reg. ~~\$70.29~~ **Sale: \$65⁹⁵**

Germiphene*

60 Second

450ml/Btl., Topical Fluoride Gel
(20915) Strawberry (20914) Mint



Reg. ~~\$30.95~~ **Sale: \$26⁹⁵**

Germiphene*

Gel 7

450ml/Btl., Neutral Topical Fluoride Gel
(20913) Strawberry (20912) Mint



Reg. ~~\$30.95~~ **Sale: \$26⁹⁵**

Heraeus Kulzer*

Gluma Desensitizer

(13618) 5ml/Btl.

Reg. \$119.95 **2+ @ \$79⁹⁵**



Medicom*

Duraflor 5% Neutral Sodium Varnish

(13741) Tube 10ml (Bubble Gum)

Reg. ~~\$49.95~~ **Sale: \$43⁹⁵ 3+1FREE = \$32⁹⁶**



Premier*

Ziroxide Prophy Paste

1lb/Jar
(10245) Mint Coarse (10248) Medium Fine

Reg. \$49.99



Defend*

Toothbrush

Individually wrapped, Assorted colors, 72/Box

(14990) YOUTH Reg. ~~\$52.11~~ **Sale: \$47⁹⁵**

(14991) CHILD Reg. ~~\$51.29~~ **Sale: \$45⁹⁵**



Mark 3*

Adult Toothbrush

(21222) Individually wrapped, Assorted colors, 72/Box

Reg. ~~\$75~~ **Sale: \$69⁵⁰**



Premium Extra Soft Child Toothbrushes

(13470) Dinosaur, 4 Assorted Colors, 72 per box

Reg. ~~\$49.99~~ **Sale: \$45²⁵**





Waterpik*

Wizard Wedges

(14916) Assorted (14912) Small
(14914) Slim Jim (14913) Large
(14915) Wide Base
500Pcs/Pack

Reg. \$86.95 **Sale: \$69⁹⁵**

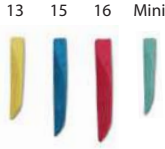


Premier*

Sycamore Wedges

400Pcs/Pack
(14048) Yellow, 13 (14049) Blue, 15
(14050) Red, 16 (14052) Light Blue, Mini

Reg. \$69.95 **Sale: \$65⁹⁵**



Waterpik*

Wizard Wedges Anatomical

400Pcs/Pack
(14917) Small (14918) Medium
(14919) Large (14920) Extra Large

Reg. \$69.95 **Sale: \$62⁹⁵**



Waterpik*

Original Tofflemire Dead Soft Matrix Bands

0.001 Gauge 36Pcs/Pack
(14929) No. 1 (14930) No. 2 (14931) No. 13

Reg. \$15.95 **Sale: \$14⁹⁵**



Waterpik*

Original Tofflemire Matrix Bands

36Pcs/Pack
0.002 Gauge 0.0015 Gauge
(14922) No. 1 (14923) No. 1
(14924) No. 2 (14925) No. 2
(14927) No. 13 (14926) No. 3
(14928) No. 13

Reg. \$15.95 **Sale: \$12⁹⁵**



Pulpdent*

Etch-Rite Etching Gel

38% Phosphoric Acid
(14056) Etch-Rite Kit, 4X1.2ml Syringe & 8 Tips

Reg. \$29.95 **Sale: \$25⁹⁵**



3M*

Mandrels

(10121) 1983RA, 3Pcs/Pack

Reg. \$59.95 **Sale: \$45⁹⁵**



3M*

Sof-Lex, Finishing & Polishing Strips

(10107) #1954, Coarse/Medium, 150Pcs/Box
(10108) #1954N, Coarse/Medium-Narrow, 100Pcs/Box
(10109) #1956, Fine/Superfine, 120Pcs/Box

Reg. \$72.95 **Sale: \$65⁹⁵**



Heraeus Kulzer*

IBond Universal Value Pack

(13472) 3X4ml

Reg. \$479 **Sale: \$429**



Kerr*

OptiBond Solo Plus

(13442) 5ml/Btl

Reg. \$129.95/btl
2+ @ \$109⁹⁹/btl Sale: \$119⁹⁵/btl



3M* Adper™

Single Bond Plus

(10179) 6ml/Btl.

Reg. \$289.95 **Sale: \$269²⁵**

Kerr*

OptiBond Solo Plus Unidose Kit

(13440) 100/pk Refill

Reg. \$399.99 **Sale: \$369⁹⁵**



Kuraray*

Clearfill SE Bond

(13605) 6ml Primer & 5ml Bond & Acc.

Reg. \$252 **2+ @ \$189²⁵/pk Sale: \$199⁹⁵**



3M* Adper™

Scotchbond Multi-Purpose

(10131) Primer, 8ml **Reg. \$289.95 Sale: \$269⁹⁵**
(10132) Adhesive, 8ml **Reg. \$289.95**

Ivoclar Vivadent*

Tetric EvoFlow

2g/Syringe & 5 Tips
(14808) A1 (14810) A3
(14809) A2 (14811) A3.5

Reg. \$69.95 **Sale: \$65⁹⁵**





Free \$20 to \$500 Gift Card with purchase! Promotional products are qualified!
Please see P8 for more information.

Zestdent*
StarFlow

5g/Syringe
(11833) A1 (11834) A2
(11835) A3 (11836) A3.5
Reg. ~~\$125.99~~ **Sale: \$105⁹⁰**



Kerr*
Revolution Formula 2 Flow

1gX4 Syringe & 20 Tips
(13427) A1 (13428) A2 (13429) A3
Reg. ~~\$109.95~~ **Sale: \$89⁹⁵**



Kerr*
Point 4

Unidose 0.2x20
(13464) A1 (13466) A3
(13465) A2
Reg. ~~\$119.95~~ **Sale: \$109⁹⁵**



Ivoclar Vivadent*
Heliomolar Flow*

1.6g/Syringe
(14781) A1 (14782) A2 (14783) A3
Reg. ~~\$69.95~~ **Sale: \$59⁹⁵**



Pulpdent*
Jumbo Etch-Rite Refill

(14055) 2X25ml Syringe
Reg. ~~\$69.99~~ **Sale: \$59⁹⁵**



3M*
Filtek Z250

4g Syringe
(10093) A1 (10094) A2 (10095) A3 (10096) A3.5
Reg. ~~\$99.90/pk~~ **Sale: \$89⁹⁵/pk**



Capsules 0.2gX20
(10203) A1 (10204) A2 (10205) A3 (10206) A3.5
Reg. ~~\$159/pk~~ **Sale: \$139⁹⁵/pk**

3M*
Scotchbond Universal Adhesive Refill

(10178) Adhesive 5ml/Bottle
Reg. ~~\$189.95~~ **Sale: \$179⁹⁵**



Silmet*
ProEtch 37% Dentin & Enamel Etch Gel

(13405) 1.2ml. Syringe 4/pk
Reg. ~~\$29.50~~ **Sale: \$22⁵⁰ 4+1Free = \$18/ea**



(13403) 1.2ml. Syringe 24/pk
Reg. ~~\$129.00~~ **Sale: \$115 4+1Free = \$92/ea**

Heraeus Kulzer*
Charisma Class

4g/Syringe
(13633) A1 (13634) A2
(13635) A3 (13636) A3.5
(13639) B2



Reg. ~~\$69.95~~
Sale: \$55⁹⁵ 4+1FREE = \$44⁷⁶

GC America*
Fuji IX GP

(12962) 1:1 Kit, 15g Pwd. & 8g Liq. A2
Reg. ~~\$269.95~~ **Sale: \$219⁹⁵**



Ivoclar Vivadent*
Tetric EvoCeram

Cavifil 0.25X20
(14802) A1 (14803) A2 (14804) A3 (14805) A3.5
Reg. ~~\$149.95~~ **Sale: \$139⁹⁵**



Kerr*
Herculite XRV Enamel

5g/Syringe Unidose 0.25X20
(13362) A1 (13374) A1
(13363) A2 (13375) A2
(13364) A3 (13376) A3
(13365) A3.5 (13377) A3.5
Reg. ~~\$99.95~~ **Sale: \$89⁹⁵**



3M*
Filtek Supreme Ultra, Capsule

Refill, 20 x 0.2g
(10216) A1 B (10218) A2 B (10220) A3 B
Reg. ~~\$259.95~~ **Sale: \$199**



SDI*
Permite

Regular set or Fast set
50 Caps/Jar 500 Caps/Jar

1 Spill	\$299	\$1,999
2 Spill	\$369	\$2,699
3 Spill	\$599	N/A





Glassvan Surgical Blades

100Pcs/Box

- (3001T-10) #10 (10080) #12
- (10078) #12B (10081) #15
- (10079) #15C (10740) #22

Reg. \$39.95 **Sale: \$36⁹⁵**



Sterile Technocut Disposable Scaples

10Pcs/Box

- (6006T-10) #10
- (6006T-12) #12
- (6006T-15) #15

Reg. \$15.95 **Sale: \$13⁹⁰**



Look Suture

12Pcs/Box

- (13725) Silk, Black braided, 5-0, 18" length, C17 Needle, 774B
- (13728) Silk, Black braided, 4-0, 18" length, C6 Needle, 781B
- (13732) Silk, Black braided, 3-0, 18" length, C31 Needle, 785B
- (13733) Silk, Black braided, 3-0, 18" length, C7 Needle, 786B
- (13731) Silk, Black, 3-0, 18" length, C6 Needle, 3/8" Circle, 784

Reg. \$62.95

4+ @ \$45⁹⁵ Sale: \$49⁹⁵



- (13712) Gut-Plain, 4-0, 27" length, C6 Needle, 551B
- (13720) Gut-Plain, 4-0, 18" length, C6 Needle, 3/8 Cir., 591B
- (13714) Gut-Plain, 3-0, 27" length, C6 Needle, 554B
- (13713) Gut-Plain, 3-0, 27" length, C7 Needle, 553B
- (13716) Gut-Chromic, 4-0, 18" length, C6 Needle, 558B
- (13717) Gut-Chromic, 4-0, 27" length, C6 Needle, 559B
- (13718) Gut-Chromic, 3-0, 27" length, C6 Needle, 560B

Reg. \$62.95

4+ @ \$45⁹⁵ Sale: \$49⁹⁵



J&J* Iris Scissors

(10224) Reg. \$18 **Sale: \$16⁵⁰**



J&J* Ethicon Spongostan

(13355) 24Pcs/Box 1cmx1cmx1cm Cube

Reg. \$69.95

Sale: \$65⁹⁵ 4+1Free = \$52⁷⁶/ea



Carbocaine HCl 3%

(13590) Without Vasoconstrictor, 50/Box

Reg. \$103 **Sale: \$99**



Cook Waite* Lidocaine

50 Cartridges/Box

- (13595) Red 2%, 1:100,000
- (13594) Green 2%, 1:50,000

Reg. \$86.95 **5+ @ \$65⁹⁵ Sale: \$71⁹⁵**



Monoject* 400 Plastic & 401 Metal HUB

- | | | |
|-----------------|-------------|-----------|
| 100Pcs/Box | 400 Plastic | 401 Metal |
| 25G Short | (13525) | (13531) |
| 25G Long | (13526) | (13532) |
| 27G Long | (13527) | (13533) |
| 27G Short | (13528) | (13534) |
| 30G Extra Short | (13529) | (13536) |
| 30G Short | (13530) | (13535) |

Reg. \$29.95 **Sale: \$25⁹⁵**



Septanest

Latex-free plungers and seals, 50 Cartridges/Box

- (10602) 1:200.000 (10603) 1:100.000

Reg. \$79.95 **Sale: \$72⁹⁵**



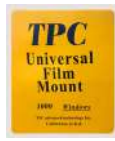


Free \$20 to \$500 Gift Card with purchase! Promotional products are qualified!
Please see P8 for more information.

TPC*
Universal Film Mount

(19407) 1000 Windows/Roll

Reg-\$49.95 **Sale: \$45⁹⁵**



Atop*
Autoclavable X-ray Film Holders

(10684) Light Beige

Reg-\$6.95 **Sale: \$5⁹⁵**



Atop*
X-Ray Positioning Kit

(14937)

Reg-\$149.95 **Sale: \$109⁹⁵**



Kodak*
X-Ray Film-Super Polysoft 150

(13604) DF-58, Size 2

Reg-\$133.95 **Sale: \$119⁹⁵**



BM-2000/2100/2200

(10969) 2X4L Dev. & 2X4L Fix.

Reg-\$119.95 **Sale: \$99⁵⁰**

(10970) 1X4L Developer

(10971) 1X4L Fixer

Reg-\$29.95 **Sale: \$25⁹⁵**



BM-3000

(10977) 3X1L of each Developer & Fixer.

Reg-\$98.95 **Sale: \$76⁹⁵**



Kodak

(13586) DF-42, Paper(100), Size 3

Reg-\$239.95 **Sale: \$199⁹⁵**



(13585) DF-56, Paper (100), Size 1

Reg-\$119.95 **Sale: \$99⁹⁵**

(13587) DF-57, Paper (150), Size 2, 2Pcs/Pkg

Reg-\$189 **Sale: \$149⁹⁵**



(13582) IP-21, Insight E-Speed
Super Polysoft (150), Size 2

Reg-\$119.95 **Sale: \$109⁹⁵**

(13596) TMG-5, Panoramic Film
5" x 12", T-mat G (50)

Reg-\$149.95 **Sale: \$129⁹⁵**



(13592) TMG-15, Panoramic Film
15 x 30cm, T-mat G (50)

Reg-\$189.95 **Sale: \$169⁹⁵**

Mark3*
Bite Wing Tabs

(14957) Self Adh, 500Pcs/Box

Reg-\$13.99 **Sale: \$12⁹⁹**



Flow Dental*
Flo X-Ray

(12924) DV-58, Econo Pak, 600 Films/Box

Reg-\$399.95 **Sale: \$369⁹⁵**



Kodak

Digital X-Ray Sensor Sleeves

Paper Covered, 500Pcs/Box

Reg-\$79.95 **Sale: \$75⁹⁵** **Net: \$15¹⁹/100pcs**



- | | | | | | | | | | |
|-------------------------------------|-------------------------------------|-------------------------------------|---------------------------------|---------------------------------|---------------------------------|---------------------------------|---|--------------------------------------|--------------------------------------|
| 10810 Size 0
(Kodak 6100) | 10811 Size 1
(Kodak 6100) | 10812 Size 2
(Kodak 6100) | 10804 Size 2
(Sirona) | 10805 Size 1
(Sirona) | 10802 Size 1
(Schick) | 10803 Size 2
(Schick) | 10801 Size 2
(Suni/Lightyear) | 10745 Size 1
(Gendex, XDR) | 10746 Size 2
(Gendex, XDR) |
|-------------------------------------|-------------------------------------|-------------------------------------|---------------------------------|---------------------------------|---------------------------------|---------------------------------|---|--------------------------------------|--------------------------------------|



Office Essential Spare Parts

Saliva Ejectors Suction

(11682)

Reg. \$59 **Sale: \$46⁹⁹**



HVE Suction

Reg. \$69.95

Sale: \$55⁹⁵



(11680)



(11679)

Scaican*

Statim Cassette

(17020) 2000

Reg. \$899

Sale: \$659



(17021) 5000

Reg. \$1100

Sale: \$899



Poly Q.D Male Insert

For use with water or air
(11628) 3/8", With shut-off

Reg. \$29.99 **Sale: \$25⁹⁵**



(11629) 1/4", With shut-off
(11630) 1/4", Without shut-off

Reg. \$29.95 **Sale: \$22⁹⁵**

Cassette Seal

(18816) STATIM 2000, RPI
(18817) STATIM 5000, RPI

Reg. \$109.95

Sale: \$89



Pelton & Crane Light Bulb

(11728) Pelton & Crane Light Bulb

Reg. \$39.99 **2+ @ \$29⁹⁵**



Poly Q.D Female Panel Mount

For use with water or air, With shut-off

(11627) 1/4"

Reg. \$19.99 **Sale: \$15⁹⁹**



(17038) 3/8"

Reg. \$39.99 **Sale: \$27⁹⁹**

Hydraulic Oil

For use on all Hydraulic chairs

(11664) 10 wt

Reg. \$25.99

Sale: \$18⁹⁹



N1 Filter Kit

(20905) Yellow

Reg. \$39.99



Comfortek Collector Screen

(19436) Yellow

Reg. \$39.99



Operating Light Bulb

Fits Beyes, Adec, Midmark, Dentech,
Eurodent, Planmeca, SDS, Sirona E1&A1s

(12930) 12V, 50W

Reg. \$25.95 **4+ @ \$15⁹⁹**



Air / Water Syringe

(11668) 45% Softer Button

Reg. \$99.99

2+ @ \$85⁹⁵ Sale \$89⁹⁵



Vacuum Collector Screens

1 7/8"

(11693) ①

(11695) ②

100Pcs

Reg. \$70.95

Sale: \$55⁹⁵

①



(11694) ①

(11692) ②

1Pcs

Reg. \$0.99

Sale: \$0⁷⁹

②



Solids Collector Disposable Covered Screen

2 1/8", For Beyes Comfortek Dental Chair

(11700) 1Pcs

Reg. \$1.25

Sale: \$0⁹⁵



Handpiece Gaskets

(13196) Fit 4 and 6-Hole

Reg. \$4.00



Thru Counter Sharps Container

- Holds 1.7 qt. sharps container
- Includes lid & 6803 sharps container
- Direct replacement for Pelton & Crane® cabinets

(17039) 5" I.D. x 11" tall

Reg. \$499.95

Sale: \$299⁹⁹



Replacement Sharps Container

(11702) 1.7 Qt.

Reg. \$36.95

Sale: \$29⁹⁵

(11704) 6.2 Qt.

Reg. \$39.95

Sale: \$37⁹⁵



Topical Anesthetic Gel



HurriCaine®

1 oz./Jar

- (10946) Wild Cherry
- (10947) Piña Colada
- (10942) Watermelon
- (10948) Fresh Mint
- (12654) Strawberry



Reg. \$19.95 **4+1Free = \$15⁹⁶/ea**

Topical Anesthetic Spray

(10944)

Topical 2oz spray + tip

Reg. \$52.95

Sale \$46²⁵





Q4 2024 PROMOTIONS

USE PROMO CODE: **Q424N**

Buy 5 XP® Sharpen-Free or Talon Tough Stainless Steel American Eagle Instruments,
GET 5 FREE!*

VALID: 10/01/2024 - 12/31/2024

XP® Sharpen-Free

Code	Instruments
19258	Barnhart 5-6 XP (3/8) Red
10584	Scaler Blackjack XP (3/8) Black
10530	Blackjack Pro Thin XPX (3/8) Black
18744	Scaler Eagle Claw XP (3/8) Red
10556	Gracey 13-14 XP 3/8" Resin Handle
10551	Gracey 11-12 XP 3/8" Resin Handle
18016	DE Scaler H6-7 XP 3/8" Resin Handle
20037	Scaler Neb 128 (DE) XP (3/8) Orange
20036	Scaler 204S XP (3/8) Yellow

Reg. \$89.95/ea
5+5Free = \$44⁹⁸/ea

18030 Gracey 11-12 XP (3/8) SS
Reg. \$89.95/ea

Talon Tough Stainless Steel

Code	Instruments
20029	Barnhart 5-6 (3/8) Red
20034	Scaler Blackjack (3/8) Black
20032	Columbia 13-14 (3/8) Blue
18031	Gracey 13-14 (3/8) Blue
20033	Gracey 11-12 (3/8) Orange
20030	Scaler H6-7 (3/8) Purple
20031	Scaler Neb 128 (DE) (3/8) Orange
18123	Scaler 204s (3/8) Yellow

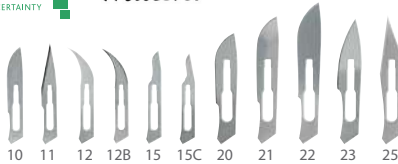
Reg. \$69.95/ea
5+5Free = \$34⁹⁸/ea

19331 Columbia 4L-4R (3/8) Stainless
20035 Gracey 1-2 (3/8) Purple
Reg. \$69.95/ea

*Offer(s) valid 10/01/2024 - 12/31/2024. Authorized dealer invoice must be submitted to fulfillment@younginnovations.com by 01/31/2024. Email is the preferred method of delivery. Qualifying purchase(s) must be on one invoice. Please allow 6-8 weeks for delivery. Offices receiving discounted group pricing are not eligible. Not valid in conjunction with any other offer(s). Questions? Please call 866.753.4392. Where applicable, please indicate your choice of product on invoice. If no indication is made, available product will be sent at our discretion. Some promotional goods may not be available in Alaska or Hawaii; substitutions will be sent at our discretion. Promotional offer(s) subject to change.



Blade



Code	Size	Reg.	Sale
18428	10	\$106.91	\$72.81
18429	11	\$106.91	\$72.81
18430	12	\$142.56	\$108.98
18431	12B	\$197.14	\$177.43
18432	15	\$106.91	\$72.81
18433	15C	\$197.14	\$177.43
18434	20	\$106.91	\$72.81
18435	21	\$106.91	\$72.81
18436	22	\$106.91	\$72.81
18437	23	\$142.56	\$108.98
18438	25	\$106.91	\$72.81

Collagen

Absorbable Collagen Membranes

Code	Description	Reg.	Sale
18405	HeliTape® 1" x 3" (2.5cm x 7.5cm)	\$369.95	\$349.95
18406	HeliCote® ¾" x 1 ½" (2cm x 4cm)	\$259.68	\$249.95
18407	HeliPlug® 3/8" x ¾" (1cm x 2cm)	\$246.48	\$236.95

Absorbable Collagen Membranes

Code	Description	Reg.	Sale
18408	HeliMend® 15mm x 20mm	\$179.57	\$165.01
18409	HeliMend® 20mm x 30mm	\$225.81	\$198.78
18410	HeliMend® 30mm x 40mm	\$347.17	\$319.50

Advanced Collagen Membrane

Code	Description	Reg.	Sale
18411	HeliMend® 15mm x 20mm	\$199.28	\$189.15
18412	HeliMend® 20mm x 30mm	\$230.51	\$219.30
18413	HeliMend® 30mm x 40mm	\$369.44	\$309.30



Absorbable Collagen Membranes



Integra collagen membrane has excellent handling characteristics.

13865 Mathieu Needle Holder, 5-1/2, Serrated Jaws

Reg. \$59.95 **Sale: \$47.95**



13866 Aspirating Syringe TYPE C (76-70)

Reg. \$79.95 **Sale: \$69.95**



19691 Self-Aspirating Syringe 1.8 cc (76-100)

Reg. \$129.95 **Sale: \$109.95**



N-Tralig Intraligamentary Syringe

Code	Size/Type	Reg.	Sale
19064	Syringe, 76-55SS	\$629.92	\$598.99
19062	Cartridge Barrel Solid Wall, PN2SS	\$36.95	\$34.99
19063	Cartridge Barrel Shield Windows, PN3SS	\$59.95	\$52.99
19065	30° Syringe Adapter, 76-56	\$59.95	\$53.99



USA Instruments

Matrix Retainers Tofflemire

(20028) Junior
(20027) Universal
(20026) Senior



Reg. \$27.95/ea

4+1Free = \$22³⁶/ea

Explorers

(12174) EXD 5L
3EZ Thicker Handle



(12176) Large Handle
Pigtail Explorer



(19031) 23/CP08
3-6-8-11mm



Reg. \$36.95 **Sale: \$27⁹⁵**

Forceps

(14982)
#1, Upper Centrals



(14983)
#150S, Pedodontic



(14984)
#10H, Upper Molars



Other forceps available

Reg. \$119 **Sale: \$89⁹⁹**

Sterilization Cassettes



	Reg	20% Off
(12136) F5 5 instr.	\$45.50	\$36.40
(12137) F7 7 instr.	\$65.99	\$52.80
(12138) F10 10 instr.	\$69.95	\$56.95
(12139) F20 20 instr.	\$109.95	\$87.96
(12140) F15 Plus 15 instr. w/ space	\$109.95	\$87.96

Curettes

Mixing and matching is allowed!

(12187) BH1/2



(12188) R3/4



(12185) MCCALL
13/14S



(12186) COL4R/4L



Gracey Standard

(12189) GR1/2



(12191) GR7/8



(12192) GR11/12



(12193) GR13/14



Scaler

(12181) H6-7



(12182) U15-30



(12183) 204S



Reg. \$36.95 **4+1FREE = \$29⁵⁶**

Burnishers



(14969) B26/27S BALL



(14970) B27/29 BALL

Reg. \$36.95 **4+1FREE = \$29⁵⁶**

Root Elevator Luxator

(14976) 3mm STR



(14977) 5mm CVD



(14978) 5mm STR



(14980) 3mm CVD



Reg. \$89 **Sale: \$59**

Elevator Root Tip

(14973) 78 STR



(14974) 79 LEFT



(14975) 80 RIGHT



Reg. \$89 **Sale: \$59**

Rubber Dam Punch

(12298) Ivory 17cm

Reg. \$85 **Sale: \$77⁹⁰**



(12231) Rubber Dam Forceps

Reg. \$32.90 **Sale: \$25⁹⁹**



(12198) Ainsworth 17cm

Reg. \$125 **Sale: \$116⁹⁹**



Crown Tool

(14972)

Reg. \$119

Sale: \$89⁷⁹



Consult-PRO[®]
CHAIRSIDE WEB
Patient Education Software
Used In Over 100 Countries Worldwide

- Over **900 presentations** in all dental specialties
- **Save time** explaining treatment options and risks
- **Empower and instill confidence** in your patients decision making process
- **Email tracked videos** to patients - 100% HIPAA Compliant!
- Covers **informed consent** with **automatic record keeping**



- Videos available in **20 languages** (narration and text)
- **Customize videos** and organize favorites
- Subscriptions come with **unlimited support and upgrades**
- **3 free website video embeds!**

Reg. \$1,699 **ATOP only Sale: \$1487**

*1 year subscription of 2 devices/screens

4D ISODAM®

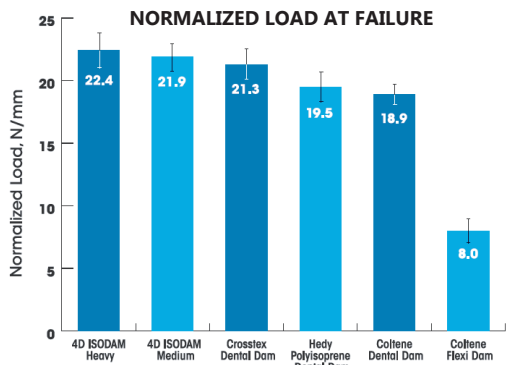
LIGHT BLUE POLYISOPRENE DENTAL DAM

10 TIME
AWARD
WINNER

3+1
Isodam
Standard
Package



WHEN FAILURE IS NOT AN OPTION,
CHOOSE ISODAM®.



For clinical procedures where dental dam stretch over 30 mm is required, the 4D Rubber ISODAM® has best-in-class tear resistance among the non-latex dental dams tested.

- Dental Advisor

STANDARD PACKAGE \$35.90 **ECONOMY PACKAGE \$129.90**
Net 3+1: \$26.93

5" x 5" Medium	20/pack	(20213)	5" x 5" Medium	100/pack	(20217)
5" x 5" Heavy	20/pack	(20214)	5" x 5" Heavy	100/pack	(20220)
6" x 6" Medium	15/pack	(20216)	6" x 6" Medium	75/pack	(20219)
6" x 6" Heavy	15/pack	(20215)	6" x 6" Heavy	75/pack	(20218)



DENTAL ADVISOR
 Non-Latex Dental Dam Tear Testing Comparison
 Not made with natural rubber latex

BIODAM® LOW PROTEIN LATEX DENTAL DAM

ISODAM® HD ROYAL BLUE POLYISOPRENE DAM



2+1
Biodam
Latex

WHEN YOU NEED
THE BEST,
CHOOSE ISODAM



3+1
Isodam
HD

Biodam®

REGULAR PACKAGE \$14.95
Net 2+1: \$9.97

GREEN:		BLUE:			
5" x 5" Medium	52/pack	(20225)	5" x 5" Medium	52/pack	(BIOBLU02412852)
6" x 6" Medium	36/pack	(20222)	6" x 6" Medium	36/pack	(BIOBLU02415236)



Isodam® HD

STANDARD PACKAGE \$35.90
Net 3+1: \$26.93

5" x 5" Medium	20/pack	(ISOHDB01800520)
5" x 5" Heavy	20/pack	(ISOHDB02300520)
6" x 6" Medium	15/pack	(ISOHDB01800615)
6" x 6" Heavy	15/pack	(ISOHDB02300615)

4D Visit us at: www.fourrubber.com

Promotions valid October 1 to December 31, 2024

BeutiSealant

Fluoride Releasing Pit and Fissure Sealant System

(13640) BeutiSealant Set
1.2 g BeutiSealant paste,
3 mL BeutiSealant primer,
15 needle tips, 50 micro brushes,
25 V-Dishes

Reg. \$129⁹⁵/Set

(13642) Syringe refill

Reg. \$52⁵⁰/Pack



BeutiBond

(17218) Bottle 6mL, 50 Microbrushes

Reg. \$215⁹⁰/Pack

(17219) Unit Dose 0.1 mL, 50 Unit Doses, 50 Microbrushes

Reg. \$215⁹⁰/Pack



BeutiBond Xtreme

Buy 2 Get 1 FREE!

Bottle or Unit Dose

New! Call us for pricing.



OneGloss PS Kit

(17111) Cup Set, 50/Box

(17112) Midi-points, 50/Box

(17113) Inverted Cones, 50/Box

(17110) Assortment Set: 15 cups, 20 midi-points, & 15 IC

Reg. \$159⁹⁵/Pack



Beautiful II Tips

Buy 4 Beautiful II Tips or Beautiful II LS Tips, Get 1 Beautiful II Tips A2 (17155) or Beautiful II LS Tips A2 (17181) FREE!

(Mix and Match Shades Must Be Like Item)

Beautiful II Tips Shades Available:

(17154) A1 (17155) A2

(17156) A3 (17157) A3.5

Reg. \$109⁹⁰/ea Net: \$87⁹²/ea



Beautiful II LS Tips Shades Available:

(17180) A1 (17181) A2

(17182) A3 (17183) A3.5

Reg. \$138⁹⁰/ea Net: \$111¹²/ea



Dura-White Stones

SHAPE CATEGORY	RE1	TC1	TC4	WH1	WH4
SHAPE					
ISO #	062	020	040	040	060
HP (12 PK)	PN (14218)	(14219)	(14220)	-	(14221)
CA (12 PK)	PN (14229)	(14230)	-	-	(14231)
FG (12 PK)	PN -	(14240)	-	(14241)	-

SHAPE CATEGORY	CN1	CY2	FL1	FL2	FL3	IC2	IC4	KN1	KN3	RD1	RD2
SHAPE											
ISO #	024	025	030	025	030	032	045	050	070	030	024
HP (12 PK)	PN (14210)	-	(14211)	(14212)	(14213)	-	(14214)	-	(14215)	(14216)	(14217)
CA (12 PK)	PN (14222)	-	(14223)	(14224)	(14225)	-	(14226)	-	-	(14227)	(14228)
FG (12 PK)	PN (14233)	(14234)	(14232)	(14235)	-	(14236)	-	(14237)	-	(14238)	(14239)

Dura-Green Stones

SHAPE CATEGORY	CN1	CN2	CN3	CY2	CY3	CY4	FL1	FL2	FL3	FL4	FL5
SHAPE											
ISO #	024	037	040	025	028	045	030	025	030	045	065
HP (12 PK)	PN (17090)	-	-	(17091)	(17092)	(17093)	(17094)	(17095)	(17096)	(17097)	(17098)
HP Fine (12 PK)	PN -	-	-	-	-	-	-	-	(17099)	-	-
HP (72 PK)	PN -	-	-	-	-	-	-	(17100)	-	-	-
CA (12 PK)	PN (17101)	(17102)	(17103)	-	(17104)	-	(17105)	(14206)	(17106)	(17107)	-
FG (12 PK)	PN (14207)	-	-	(14205)	-	-	-	(14208)	-	-	-

Dura White/Green

Made of micrograined aluminum oxide grits, outstanding for finishing enamel, composites and porcelain.

Reg. \$43⁴⁷
Sale: \$39⁹⁰/ea

Beautiful II

Beautiful II Syringe: 4.5g

Reg. \$62⁹⁰/ea

Beautiful II LS Syringe: 4.5g

Reg. \$99⁹⁰/Pack



Shades Available:

A1, A2, A20, A3, A30, A3.5, A4, B1, B2, BW, C2

Beautiful Flow Plus



Buy 4 Beautiful Flow Plus Syringes, Get 1 Beautiful Flow Plus F00 A2 (14245) FREE!

Shades Available:

(14244) A1 (14245) A2

(14246) A3 (17194) A3.5

Reg. \$58⁵⁹/ea Net: \$46⁸⁷/ea



Beautiful Flow Plus Capsules

Reg. \$126⁰²/ea



For complete ordering information, contact your authorized Shofu Dealer. Email, fax, or mail this page with a copy of your invoice to customer-service@shofu.com, 760.736.3276, or Shofu Dental Corporation 1225 Stone Drive, San Marcos, CA 92078-4059

- Proof of purchase on one Shofu authorized distributor invoice is required.
- Make sure that the dealer invoice clearly shows your name, address, phone number and products purchased. Incomplete or illegible invoices will not be honored.
- Bonus products will be shipped to you directly from Shofu Dental Corporation. CANADA: Bonus products will be shipped to you directly from your Shofu Canadian Dealer. Allow 6-8 weeks for delivery.
- Offer cannot be combined with any other Shofu special. Shofu reserves the right to discontinue or change this offer at any time.
- Offer valid until the end of December.

Super-Snap Refills

50pcs/pk

- (14249) Black Coarse-Safe Side Down
- (14250) Black Coarse-Mini-Disk
- (14251) Violet Medium-Safe Side Down
- (14255) Violet Medium-Double Sided
- (14254) Violet Medium-Double Sided, Mini
- (14247) Green Fine-Double Sided
- (14252) Green Fine-Safe Side Down, Mini
- (14248) Red SuperFine-Double Sided
- (14253) Red SuperFine-Safe Side Down, Mini



Reg. \$62⁹⁰/Pack

Super-Snap Rainbow Technique Kit

(14243) Contains:

- 180 (20 ea.) Discs & Mini-Discs,
- 40 Polystrips (20 black/violet, 20 green/red),
- 2 CA Dura-White Stones,
- 1 CA Composite Fine Midi-Point, 2 CA mandrels.



Reg. \$181¹⁰/Pack

Robot Diamonds

Sale: \$11⁹⁰/ea



(Scan QR code for the complete selection of robot diamonds)



2024 | FOURTH QUARTER
SHOFU DENTAL CORPORATION



Promos active October 1, 2024 - December 31, 2024.

No mix & match. Free goods shipped with order. Excludes chargeback customers.

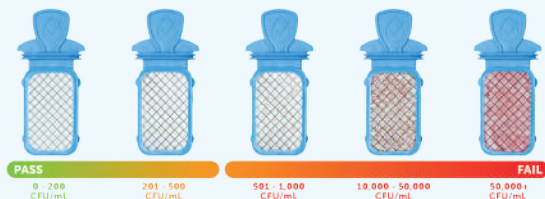
QuickPass[®]

IN-OFFICE DENTAL WATER TEST

- The only in-office test designed for dentistry
- Quick 48 – 72 hour results
- Free consultations to help improve results
- Bacteria grows red for easy reading
- Includes germicidal neutralization for greater reliability



Easy-to-read results.



(20068) 4-pack Reg. \$109⁸⁰ (20070) 12-pack Reg. \$265

BluTube[®]

Dental Unit Water Purification Cartridge

- Contains two 6-month cartridges, giving your lines nearly 40% more power over 1 year
- Includes 6-month chemical indicator for cartridge replacement and "Dummy Straw" for easy shocking
- Can be used with tap or distilled water
- Safe for patient contact and dental equipment, non-toxic, nonallergenic, and non-corrosive



(20067) Dental Water Purification Cartridge BT180 Reg. \$365

Includes: two 6-month cartridges, automatic replacement indicator, dummy straw, & quickstart guide

Buy a year of treatment, get a year of testing FREE!

*Buy 1 (20067), Get 1 (20068) Free!

SoftX Digital

FOAM BITE WING LOOP

Quick, Comfortable X-rays Every Time!
Easy, Comfortable, Accurate,
Economical & Flexible



(20073) Size #1 250/pack (20072) Size #2 250/pack

Reg. \$69⁹⁹

BluTab[®]

Waterline Maintenance Tablets

- Shares highest real-world pass rate of 88%
- 4-time Dental Townie Award winner for best waterline treatment product
- Exceeds CDC standards by 50x
- Simply add 1 tablet with each water bottle refill



(20065) BT50
(for 700-750mL bottle), 50/bx

Reg. \$55⁹⁰

(20066) BT20
(for 2 Litre bottle), 50/bx

Reg. \$82⁹⁵



Sectional Matrix System

MEGA V represents the innovation behind the converging tines technology and the superior clinical performance only a sectional matrix system can provide. The use of heat-treated stainless steel, ensures the intended force is delivered to separate the adjacent tooth, freeing the clinician to perform class II restorations, quickly and efficiently.

The MEGA V sectional matrix system offers a single ring size intended for molars and premolars, which can be stacked to achieve multiple restorations at one time.



Order Info.

Matrix System Kits	Code	Description	Reg.	Sale
	11858	Mega V Ring Clinical Trial Kit , Includes: • Mega Ring (2 pcs) • Matrix Bands Thin Flex, Small (50 pcs), Large (50 pcs) • Contact Wedge	\$259.95	\$234.95
	17060	Mega V Ring Clinical Kit , Includes: • Mega Ring (4 pcs) • Matrix Bands Thin Flex, Small (100 pcs), Large (100 pcs) • Contact Wedge	\$499.95	\$439.95
	19119	Mega V Ring Clinical Kit Plus , Includes: • Mega Ring (4 pcs) • Matrix Bands Thin Flex, Small (100 pcs), Large (100 pcs) • Contact Wedge • Ring Plier & Matrix Forceps	\$608.29	\$598.45

Matrix Rings	Code	Description	Reg.	Sale
	19133	Mega V Ring (2 pcs)	\$208.95	\$192.95

Instruments	Code	Description	Reg.	Sale
	19131	Mega V Ring Pliers Plus	\$139.95	\$126.95
	19132	Mega V Grip Forceps		

Matrix Bands	Code	Description	Reg.	Sale
	19126	Mega V Matrix Bands, Subgingival (50/pk)	\$95.95	\$83.95
	19124	Mega V Matrix Bands, Stiff Flex, Large (100/pk)	\$109.95	\$95.95
	19125	Mega V Matrix Bands, Stiff Flex, Small (100/pk)		
	19122	Mega V Matrix Bands, Thin Flex, Large (100/pk)	\$109.95	\$95.95
	19123	Mega V Matrix Bands, Thin Flex, Small (100/pk)		
	19120	Mega V Matrix Bands, Ultra Thin Flex, Large (100/pk)	\$129.95	\$119.65
	19121	Mega V Matrix Bands, Ultra Thin Flex, Small (100/pk)		

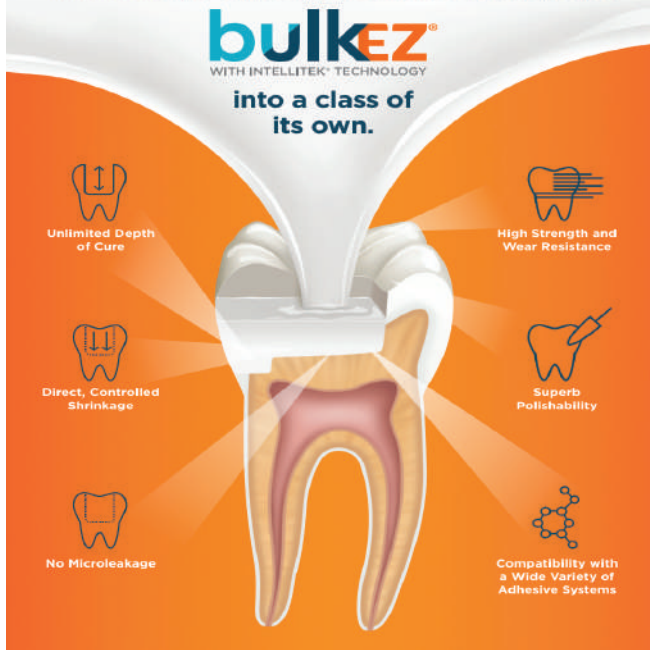
Wedges	Code	Description	Reg.	Sale
	19128	Mega V Wedges, Large, Green (100/bag)	\$59.95	\$49.95
	19129	Mega V Wedges, Medium, Orange (100/bag)		
	19130	Mega V Wedges, Small, Blue (100/bag)		

Introducing
bulkez®
with IntelliTek® Curing Technology

The Optimal Bulk-Filling Solution for Restorative Procedures

- Bulk EZ® is an easy-to-place, dual-cure, bulk-fill composite that combines flowable cavity adaptation with high strength and wear resistance—all in one, simple step.
- Its self-cure, patent-pending IntelliTek® Technology is designed to specifically control and direct shrinkage while eliminating microleakage in all posterior restorations.
- Bulk EZ has reinvented bulk-fill composites by addressing the limitations that plague current products, such as gap formation and stress from rapid curing.

Unlimited cure depth and no microleakage propel



Refill: 2 Syringes (6 gm ea.), 6 Tips (17 gauge), 6 Tips (19 gauge)

(94775) Refill A1 (94776) Refill A2 (94777) Refill A3

Reg. \$185.95 **Sale: 162.25 3+1Free = 121.69**



2024-4TH
Oct 1- Dec 31, 2024

**QUARTER
SPECIALS**

PROMOCODE:
2024Q4CA

Prelude One Universal Adhesive

(11845) Adhesive, 5ml Bottle

Reg. \$115.00 **Sale: \$103.50**



MicroEtcher Powder

(18796) Aluminum Oxide 27 Micron 1/lb

(18797) Aluminum Oxide 50 Micron 1/lb

(13284) Aluminum Oxide 90 Micron 1/lb

(18798) Glass Beads 90 Micron 1/lb

(18799) Orthophrophy SA-85 85 Micron 1/lb



Aluminum Oxide Glass Beads Orthophrophy

Sale: \$49.12

MicroPrime™ G Desensitizer Bottles

(11843) MicroPrime G Type 10ml

Sale: \$139.95



TurboTemp

TurboTemp™ 3 REFILLS (76 gm), 10 Mixing Tips

(93323) Refill A1 (93324) Refill A2 (93369) Refill A3

Reg. \$241.50 **Sale: \$235.90**



Caries Finder

(18803) CariesFinder Red 10ml

(18804) CariesFinder Green 10ml

Sale: \$69.95



Air Polisher Powder

(18801) B+ Sodium Bicarb 1/lb (For use in Microphrophy)

(18802) Sodium Bicarb 1/lb (For use in other phrophys)

Sale: \$49.12



Request must be received by 12/31/2024. Offer valid in U.S. and Canada only. Please allow 4-6 weeks for processing. All no-charge goods will ship directly from the manufacturer. Limit 3 redemptions per offer per customer. To receive no-additional-charge goods, please send a copy of your dealer invoice dated 10/01/2024- 12/31/2024 with corresponding promo code via fax directly to 760-444-4881, or email the invoice to sales@zestdent.com.



(19108)
Home Whitening Kit,
No Light, 5pk/case

\$174.75



(19110)
LED Home Whitening Kit, 5pk/case

\$324.75

(19113)
Prophy Paste+Whitening 1/pk

\$30



(19227)
Rechargeable LED Blue & Red
Home Whitening

\$171



Valid October 1- December 31, 2024

PROETCH

(13405) 4g Syringe



Reg.\$22.50 **4+1FREE**

PROETCH

(13403) Box of 24 Syringe x 1.2ml



Reg.\$115 **4+1FREE**

PROFil

4g Syringe

Shades: A1 (20917), A2 (20918),
A3 (20919), A3.5 (21000)



Reg.\$49.99

PROFil

Compules, 315g x 20/pk

Shades: A1 (20267), A2 (20266), A3 (20265),
A3.5 (20268), A4 (11348), B1 (20502)



Reg.\$76.99 **3+1FREE**

PROFil Flow

4 x1g Syringes plus 10 Tips, 1gm

Shades: A1 (20263), A2 (20262),
A3 (20261), A3.5 (20264)



Reg.\$63.50 **3+1FREE**

PROLink

(20269) 5 ml Bottle



Reg.\$69.99

AMALGAM ALLOYS

Available in 1 Spill, 2 Spill & 3 Spill - Regular & Fast Set - 500 packs & 50 packs

Spherodon - M

Admix Alloy, 45.5%
Ag(Silver), High Copper,
Non Gamma II

COMPARE TO
CONTOUR



- Outstanding dimensional stability
- Improved marginal integrity
- More body
- Easy condensation versatility
- Reduced risk of fracture
- High corrosion resistance

Spherodon +

Spherical Alloy, 60%
Ag (Silver), High Copper,
Non Gamma II

COMPARE TO
TYTIN



- 100% spherical particles
- Superb compressive & tensile strength
- Decreases micro leakage
- Easy handling and smooth carving
- Extra low mercury alloy ratio

Nogama

Disp. Phase Alloy, 69.5%
Ag (Silver), High Copper,
Non Gamma II

COMPARE TO
DISPERSALLOY



- Increased strength of restored teeth
- Excellent durability
- Corrosion resistant
- Supreme marginal adaptability

	Size		500/pk		50/pk
1 Spill	Regular Set	(21017)	\$699	(20505)	\$79 ⁹⁵
	Fast Set	(21016)	\$699	(20508)	\$79 ⁹⁵
2 Spill	Regular Set	(21019)	\$988 ²⁵	(20506)	\$109 ⁹⁵
	Fast Set	(21018)	\$988 ²⁵	(20504)	\$109 ⁹⁵
3 Spill	Regular Set	(121493)	\$1,199 ⁹⁵	(20507)	\$119 ⁹⁵
	Fast Set	(120493)	\$1,199 ⁹⁵	(20600)	\$119 ⁹⁵
1 Spill	Regular Set	(131491)	\$908 ⁹⁵	(11485)	\$119 ⁹⁵
	Fast Set	(130491)	\$908 ⁹⁵	(11483)	\$119 ⁹⁵
2 Spill	Regular Set	(20297)	\$1,099 ⁹⁵	(21227)	\$129 ⁹⁵
	Fast Set	(130492)	\$1,099 ⁹⁵	(19380)	\$129 ⁹⁵
3 Spill	Regular Set	(131493)	\$1,399 ²⁵	(131473)	\$169 ⁹⁵
	Fast Set	(130493)	\$1,399 ²⁵	(130473)	\$169 ⁹⁵
1 Spill	Regular Set	(111491)	\$905 ⁹⁵	(13511)	\$109 ⁹⁵
	Fast Set	(20608)	\$905 ⁹⁵	(12118)	\$109 ⁹⁵
2 Spill	Regular Set	(111492)	\$1,399 ²⁵	(13510)	\$163 ⁹⁰
	Fast Set	(20607)	\$1,399 ²⁵	(11643)	\$163 ⁹⁰
3 Spill	Regular Set	(20296)	\$1,699 ⁹⁵	(13514)	\$219 ⁹⁰
	Fast Set	(20609)	\$1,699 ⁹⁵	(11644)	\$219 ⁹⁰

100% MONEY BACK GUARANTEE

Promo Code: 3342 October 1-December 31, 2024

Sure-Check™ Self-Seal Sterilization Pouches

500/box		Reg.
(11801)	3.5" x 9"	\$35.95
200/box		
(11805)	2.25" x 4"	\$16.95
(11803)	2.75" x 9"	\$19.99
(11804)	3.5" x 5.25"	\$19.99
(11800)	3.5" x 9"	\$19.99
(11802)	5.25" x 6.5"	\$19.99
(11799)	5.25" x 10"	\$29.95
(11797)	5.25" x 15"	\$52.95
(11796)	7.50" x 13"	\$53.99
(11798)	8" x 16"	\$71.95
100/box		
(11794)	10" x 15"	\$62.95
(11795)	12" x 18"	\$69.95



Built-in, multi-parameter, internal/external process indicators for all three sterilization criteria of time, temperature and steam.

AirView™ II Bowie-Dick Test Pack

Easy-to-interpret indicator; smaller size reduces waste; does not contain lead.

(19169) 30/case
Reg. \$241.99



Steam Plus™ Type 5 Integrators

Immediate-readout; confirm sterilization conditions with a definitive pass or fail result.

(11806) 4" Strips, 100/bag
Reg. \$72.95
(19176) Dry Heat Chemical Indicator Strip, 100/box
Reg. \$49.95



Ultra™ Secure Fit™ Surgical Face Masks

(17003) For Sensitive Skin, ASTM Level 3, 50/Box, White
Reg. \$33.90
(17001) Fog Free™ For Sensitive Skin, ASTM Level 3 40/box, White
Reg. \$37.99 3+1FREE = \$28.49/ea



ConFirm® 10, Result in 10hrs

In-Office Biological Monitoring

Easy to use: Simply process indicator in a normal steam sterilization cycle followed by a 10 hour incubation cycle.

(19168) Confirm 10 Starter kit (Incubator, Record Keeper, Manual)
Reg. \$788.95
(11778) Biological Indicators, 25/box
Reg. \$168.80



ConFirm® 24, Result in 24hrs

In-Office Biological Monitoring

Easy to use: Simply process indicator in a normal steam sterilization cycle followed by a 24 hour incubation cycle.

(19226) Confirm 24 Starter kit (Incubator, 25 Indicators, Crusher, Record Keeper, Manual)
Reg. \$799
(19103) Incubator Machine
Reg. \$399
(19052) Biological Indicators, 25/box
Reg. \$130.95
(19501) SporView Self-Contained Steam BI 100 /box
Reg. \$389



DentaPure™ Municipal Water Cartridge

Easily adapted for installation onto incoming waterlines plumbed directly to city water via included poly-flo fittings.

(DP40B) 60 Day Filter System/each Rev2
Reg. \$95 Sale: \$89.50
(DP365B) 365 Day Filter System/each Rev2
Reg. \$399 Sale: \$379 3+1FREE = \$284.25/ea
(19172) 365 Day Muncpl Filter/each Rev2
Reg. \$399 Sale: \$379 3+1FREE = \$284.25/ea



Free good will ship with orders.

ProGuard™ 5% Sodium Fluoride Varnish

50/Box. Convenient, easy-to-apply, single-dose packaging; minimal set-up and clean-up time; smooth consistency with excellent flow characteristics.

(UFVPM) Mint (UFVPL) Melon
Reg. \$186.99



Offer(s) valid in the 50 United States, District of Columbia and Canada. Participation is not permitted for customers who participate in any other pricing program, including government, group practices, special markets, community health centers, schools, institutions, and discount customers. This offer cannot be combined with any other offer or promotion. Offer(s) not valid on Made-To-Order (MTO) products. To get your at no additional charge product(s), please fax a copy of your distributor invoice dated October 1-December 31, 2024 (purchase must be from an authorized HuFriedyGroup distributor) indicating the required buys and your at no additional charge goods selection to 773-694-1971 or by email to redemptions@hu-friedy.com. Dental Water Management, PPE, and Operator Supplies (with the exception of HVE Mirror Connect) no charge products will automatically ship with your order from our participating authorized distributors. Proofs of purchases may be used for marketing purposes. Redemption must be postmarked by January 31, 2025. 1) Equal or lesser value.

Crosstex is now a proud member of

Dia-X™ Bond UNIVERSAL

Single Component Universal Bonding Agent

[A2001-2201] Dia-X Bond Universal

- Versatile with all etching techniques
- All direct and indirect restorations
- Light-, self- & dual-cure compatible
- Virtually no post-op sensitivity
- Advanced 10-MDP monomer
- Convenient: true 1-bottle bond
- Uncompromising bond strength
- Stable at room temperature



Reg. \$159.95 **Sale: \$133.90**

D.LUX+

Wavelength Cordless Curing Light

[20050] D-Lux+ Regular Kit

Contains: D-Lux+ hp & charger, light probe, light protector, disposable sheaths (200/box), power supply (adapter)

- Powerful 2,400 mW/cm2 output
- Dual wavelength: 385 - 515 nm
- 360° swivel light probe
- 5 versatile curing modes
- Built-in light intensity sensor
- High capacity 2,600 mAh battery
- Wireless inductive charger



Reg. \$1,650 **Sale: \$1,590**

DiaFil Flow™

Light-Cured Flowable Composite

- Perfect adaptation and handling
- Excellent color adaptability
- Pit & fissure sealant
- Excellent tensile strength and low shrinkage
- Highly radiopaque
- Class III, IV and V direct restorations
- Base/Liner under posterior restorations in Class I, II



Regular Pack Contains: 1 x 2g flowable syringe & 10 tips

[20245] A1 [20246] A2 [20247] A3 [20248] A3.5

Reg. \$47.99/pkg **Sale: \$42.90**

Econo Pack Contains: 4 x 2g flowable syringe & 40 tips

[20057] A2 [20058] A3 [20059] A3.5

Reg. \$158/pkg **Sale: \$133.99**



DiaPlus™

One Step Bonding Agent

- Direct & indirect applications (5th gen)
- Low film thickness
- No adhesive show-through
- Virtually no post-op sensitivity
- Ethanol-based
- Compatible with dual- & self-cured resin
- Exceptional & reliable bond strength



[20055] DiaPlus Bonding Agent 5 ml bottle

Reg. \$79.90 **Sale: \$69.95**

Dia-ProSeal™

Epoxy Resin-Based Root Canal Sealer

- Excellent sealing ability
- Low shrinkage & solubility
- Outstanding flowability
- Highly antimicrobial with Ca(OH)₂
- Fast preparation w/ dual syringe
- Setting time: 3-4 hours



[20052] Dia-ProSeal Regular Kit

Contains: 1 Syringe of 16g, 1 Mixing Pad and 1 Spatula

Reg. \$78 **Sale: \$69.95**

DiaEtch™

37% Phosphoric Acid Etching Gel

BUY 3, Get 1 FREE!

*of the same value

[A2001-3103] **Regular Pack** Contains: 2 x 3 ml syr. and 10 disposable tips

Reg. \$17.90/pkg **Sale: \$13.90**

[12313] **Refill Pack** Contains: 1 x 5 ml syr. and 5 disposable tips

Reg. \$15.99/pkg **Sale: \$10.99**



DiaFil™

Light-Cured Nanohybrid Composite

Syringe Refill Package (1 x 4g)

[20603] A1 [20604] A2 [20605] A3 [20606] A3.5

Reg. \$67.95/pkg **Sale: \$58.99**

Capsule Refill Type (20 X 0.25g)

[20060] A1 [20061] A2 [20062] A3 [20063] A3.5

Reg. \$95.99/pkg **Sale: \$84.99**



*Additional shades available.

Diapex® Plus

Calcium Hydroxide with Iodoform

[12048] **Regular Kit** 1 x 2g syringe and 20 tips

Reg. \$69.95 **Sale: \$64.95**



Dia-Root™ Bio Sealer

BioCeramic Root Canal Sealer

[20053] **Dia-Root Bio Sealer Regular Kit**

Contains: 2 g syringe, 20 tips, 1 cap

BUY 1, Get 1 Dia-Isogt GP FREE!

Reg. \$95 **Sale: \$86.95**



[20054] **Intro Kit**

Contains: 0.5g syringe, 4 tips, 1 cap

Reg. \$39.95 **Sale: \$29.95**

DiaTemp™ & DiaTemp™ Flow Light Cured Temporary Restorative Material

Features

- DiaTemp Flow (Low viscosity): fast and easy application
- DiaTemp (High viscosity): no mixing required
- Great for implant access holes
- Elastic: quick and simple removal in one piece
- Good adhesion for tight sealing of margins
- Strong and durable: high resistance to external force



[A2003-1101] **BLUE** DiaTemp
[A2003-1201] **YELLOW** DiaTemp
Contains: 3 x 3 g syringe
Reg. \$57.99 **Sale: \$45.90**

[A2003-2101] **BLUE** DiaTemp Flow
[A2003-2201] **YELLOW** DiaTemp Flow
Contains: 5 x 1.8 g syringe and 10 tips
Reg. \$57.99 **Sale: \$45.90**

K-Files™

21mm, 6/Pkg

25mm, 6/Pkg

[12408] 08	[12409] 10	[12428] 08	[12429] 10
[12410] 15	[12411] 20	[12430] 15	[12431] 20
[12412] 25	[12413] 30	[12432] 25	[12433] 30
[12420] 35	[12415] 40	[12434] 35	[12435] 40
[12416] 45		[12436] 45	



Reg. \$12.95/pkg

NiTi Hand Files (Nickel Titanium)

Reg. \$9.99/pkg
Sale: \$8.99

- Color coded handles with pre-inserted endo stops
- Produces smooth and progressive enlargement of canal
- NiTi has memory so no need to pre-bend files
- NiTi resists breakage, decreases zipping and stripping
- Increased angular rotation reduces fracture



NITI K-Files 21mm, 6/Pkg

NITI K-Files 25mm, 6/Pkg

[NT502-101] 8	[NT502-109] 45	[NT502-201] 8	[NT502-209] 45
[NT502-102] 10	[NT502-110] 50	[NT502-202] 10	[NT502-210] 50
[NT502-103] 15	[NT502-111] 55	[NT502-203] 15	[NT502-211] 55
[NT502-104] 20	[NT502-112] 60	[NT502-204] 20	[NT502-212] 60
[NT502-105] 25	[NT502-113] 70	[NT502-205] 25	[NT502-213] 70
[NT502-106] 30	[NT502-114] 80	[NT502-206] 30	[NT502-214] 80
[NT502-107] 35	[NT502-191] 15/40	[NT502-207] 35	[NT502-291] 15/40
[NT502-108] 40	[NT502-192] 45/80	[NT502-208] 40	[NT502-292] 45/80

NITI H-Files 21mm, 6/Pkg

NITI H-Files 25mm, 6/Pkg

[NT503-101] 8	[NT503-110] 50	[NT503-201] 8	[NT503-210] 50
[NT503-102] 10	[NT503-111] 55	[NT503-202] 10	[NT503-211] 55
[NT503-103] 15	[NT503-112] 60	[NT503-203] 15	[NT503-212] 60
[NT503-104] 20	[NT503-113] 70	[NT503-204] 20	[NT503-213] 70
[NT503-105] 25	[NT503-114] 80	[NT503-205] 25	[NT503-214] 80
[NT503-106] 30	[NT503-115] 90	[NT503-206] 30	[NT503-215] 90
[NT503-107] 35	[NT503-191] 15/40	[NT503-207] 35	[NT503-291] 15/40
[NT503-108] 40	[NT503-192] 45/80	[NT503-208] 40	[NT503-292] 45/80
[NT503-109] 45		[NT503-209] 45	

NITI Reamers 21mm, 6/Pkg

NITI Reamers 25mm, 6/Pkg

[NT501-101] 8	[NT501-109] 45	[NT501-201] 8	[NT501-209] 45
[NT501-102] 10	[NT501-110] 50	[NT501-202] 10	[NT501-210] 50
[NT501-103] 15	[NT501-111] 55	[NT501-203] 15	[NT501-211] 55
[NT501-104] 20	[NT501-112] 60	[NT501-204] 20	[NT501-212] 60
[NT501-105] 25	[NT501-113] 70	[NT501-205] 25	[NT501-213] 70
[NT501-106] 30	[NT501-114] 80	[NT501-206] 30	[NT501-214] 80
[NT501-107] 35	[NT501-191] 15/40	[NT501-207] 35	[NT501-291] 15/40
[NT501-108] 40	[NT501-192] 45/80	[NT501-208] 40	[NT501-292] 45/80

Paper Point

#8-8o Accessory Sizes: 15/40, 45/80, 90/140

[201-S601] to [201-S693] Non Marked 200/ box
Reg. \$13.99 **Sale: \$12.95**

[MP201-S601] to [MP201-S693] Millimeter Marked 200/ box
Reg. \$16.99 **Sale: \$15.90**



Gutta Percha

#8-8o Accessory Sizes: 15/40, 45/80, 90/140

[101-S601] to [101-S693] Non Marked 120/ box
Reg. \$16.99 **Sale: \$15.90**

[ML101-S601] to [ML101-S693] Millimeter Marked 120/ box
Reg. \$21.50 **Sale: \$19.90**



Dia-X™ Files

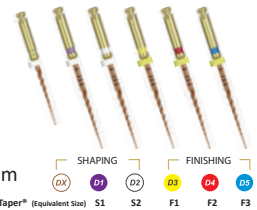
Heat-Treated NiTi Rotary Files

- Convex triangular x-section reduces rotational friction
- Progressive taper design enhances flexibility and efficiency
- Navigate calcified or severely curved canals with control
- High corrosion resistance with coated surface
- 11 mm length handle offers improved accessibility to teeth
- Perfect match with Dia-ProT gutta percha & paper point

Reg. \$47/pkg **Sale: \$41.95**

21mm, 4/Pkg

[571-100] D1 19mm	[571-201] D108
[571-101] D1 21mm	[571-202] D2 25mm
[571-102] D2 21mm	[571-203] D3 25mm
[571-103] D3 21mm	[571-204] D4 25mm
[571-104] D4 21mm	[571-205] D5 25mm
[571-105] D5 21mm	[571-291] D1-D4 25mm
[571-191] D1-D4 21mm	



BUY 6, Get 1 FREE!
BUY 11, Get 2 More
+ 1 Dia-Prot GP FREE!



Dia-Pro W™ GOLD

Gutta Percha & Paper Point

Reg. \$22/pkg
Sale: \$19

- Precisely match WaveOne® GOLD Rotary Files
- Millimeter marked: quick and easy method for depth measurements
- Cadmium free, latex free, and highly radiopaque
- Length = 28 mm +/- 1
- Convenient one-hand slide open packaging

Gutta Percha, 60/Box

Paper Point, 100/Box

[ML168-S601] Small	[MP268-S601] Small
[ML168-S602] Primary	[MP268-S602] Primary
[ML168-S603] Medium	[MP268-S603] Medium
[ML168-S604] Large	[MP268-S604] Large
[ML168-S691] Assorted	[MP268-S691] Assorted



Gutta Percha Obturator Pellet

[181-101] 100/bottle Reg. \$39.99 **Sale: \$36.90**



Dia-Endo Ring

[850-001] Reg. \$39.95 **Sale: \$37.90**



Endo Stops

[701-291] 100/bag Reg. \$16.90 **Sale: \$13.90**



PeriAcryl® 90 High Viscosity



Benefits of PeriAcryl®90

PeriAcryl®90 forms a zone of inhibition against bacteria that can cause infection.

Using PeriAcryl®90 helps stop bleeding and seals off wounds to reduce surgical time spent on achieving hemostasis or placing sutures.

PeriAcryl®90 is a strong and comfortable dressing compared to dental packing that can feel bulky and fall off too soon.

Characteristics of PeriAcryl®90

- Polymerizes rapidly in contact with water or moist oral tissue.
- Stays in place for up to 14 days when a multi-layer application is made.
- Dyed violet for increased visibility during application.
- Biocompatible and non-toxic

(20025) PeriAcryl 90, High Viscosity, Violet, W/Tray & 50 Pipettes

Reg. \$135 **Sale: \$125**

(20024) Regular Viscosity, Violet, W/Tray & 50 Pipettes

Reg. \$130 **Sale: \$115**



Ora Aid Attachable Intraoral Wound Dressing



- Protects oral wounds from food and cigarette smoke
- Non-eugenol protective dressing material applied to intraoral wounds
- Aids in hemostasis
- Protects suture thread from tongue irritation
- Strong adhesion using hydrophilic polymer
- Safe and easy to use. Easy to cut into different shapes/sizes
- Self adhesive with saliva
- Reduces irritation sore in mouth
- Mint flavour reduces halitosis
- Each pack contains 20 pieces

(11244) 25 x 15mm x 20pcs

New: \$96

(11245) 50 x 15mm x 20pcs

New: \$149



Buy 3 Get 1 FREE

*Mix and Match!



Valid July 1- September 30, 2024



Articaine hydrochloride and epinephrine bitartrate Injection
40 mg/mL/0,018 mg/mL (1:100,000) and 40 mg/mL/0,009 mg/mL (1:200,000)

- Rapid onset of anesthesia within 1-3 minutes
- Complete anaesthesia lasts from 45 to 75 minutes per cartridge
- Only 10% overage of epinephrine¹
- Sodium edetate free, methylparaben free and latex free
- Each cartridge is sealed individually in the blister for maximum protection



(18316)
Orabloc 1:100.000
EPI 4% Arti 1.8ml

(18317)
Orabloc 1:200.000
EPI 4% Arti 1.8ml



50Pcs/Box

Reg. \$74.90 **5+1Free = \$62⁴²/ea**



Stop Needle-Stick Injuries

No worries, be Safe, be Smart.

Needle-Stick Safety System provides protection from single-use needles by covering the ends of the needles after use. Covering needles minimizes the risk of needle sticks during recapping, temporary storage or disposal.

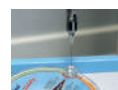
- Spring-loaded
- Automatically advances to the next capsule after one is removed
- Capsules can be used with all needle lengths and gauges
- Easy to use
- CDC and OSHA compliant

(20200707)

Needle-Stick Safety System
1 device and 100 color-coded capsules



Very simple and easy to use



1. Place the needle tip in the funnel opening on top of the device.



2. Remove the syringe. A protective capsule will be covering the needle.



3. The system "automatically advances" to the next available capsule.

Reg. \$42.99 **Sale: \$26⁹⁹/ea**

Valid October 1- December 31, 2024



Vinyl Polysiloxane
Alginate Alternative

Used for dental impressions, orthodontic models, removable retainers and splints, simple removable dentures, provisional crown and bridge.



(20205) Fast Set
Work Time: 1 minute
Intra Oral Set Time: 1 minute
8 x 50ml cartridges per box

Reg. \$90.95/set **3+1FREE = \$68.21/set**

20% Benzocaine
Topicare Topical Anesthetic Gel
1oz/ jars

- (14855) Bubble Gum
- (14859) Cherry
- (14858) Mint
- (14854) Pina Colada
- (14857) Strawberry



Reg. \$13.95 **5+2FREE = \$9.96**

37% Phosphoric Acid
Etchant Gel

(100-9090) 4 x 1.2mL Syringes

Reg. \$29.50
Sale: \$22.50



Bioenzymatic
Autoclave Cleaner Concentrate

(13401) 32oz/ per bottle

Reg. \$25.90/box **Sale: \$23.95**



Bioenzymatic
Ultrasonic Cleaner

(20204) 64 Tablets/ per box

Reg. \$49.95/box



EDTA Solution 17%

(11240) 17oz. (500ml)/ Bottle

Reg. \$23.50 **Sale: \$19.95**



VPS Impression Material
4x50ml cartridges

	Fast Set	Regular Set
Light	(20104)	(20103)
Medium	(20106)	(20105)
Heavy	(20108)	(20107)
Monophase	(20202)	(20109)

Reg. \$49.95/Set

VPS Putty
300ml each Base & Catalyst

(20101) Fast Set
(20100) Regular Set

Reg. \$79.95

Bite Registration Material

2x50ml Cartridges & 6 Mixing Tips

(20207) Fast Set
(20206) Regular Set

Reg. \$42.95
5+1FREE = \$35.79/set

VPS Tray Adhesive

10ml bottle

(20102) Reg. \$23.95

Dual Cure Flowable with Nano Technology

Core Build-Up Dual Cure Automix Syringe MADE IN GERMANY

Core Build-Up is a dual cure, high radiopaque flowable micro-hybrid composite material with nano particle(nano-zirconium, nano-calciumfluoride) for core build-up and cementation of posts.

HIGHLY RATED
In Clinical Trials

Contains: 2x5ml (8.7gm) Automix Syringes
10 mixtips, 10 intra-oral mix tips.



(11242) A3 (11460) White (11467) Blue

Reg. \$169.99/set **Intro Price: \$149.90/set**

Endo Pulp Vitality Refrigerant Spray

(11247) 6oz./ Bottle

Reg. \$32.95 **Sale: \$29.90**



Sodium Hypochlorite Solution 6%

(11246) 17oz./ Bottle

Reg. \$18.95 **Sale: \$15.90**



*We offer a full money back guarantee on all MARK3 products. If you purchased a MARK3 product and are not satisfied, reach out and we will provide a full refund or a replacement. MARK3 Dental Products are just as good or better than the name brand at a fraction of the price.

NITRILE AND LATEX GLOVES

 (10884) S
 (10885) M
 (10886) L

Blush

 200 gloves per box
 Reg. \$25.50/box
Net: \$17.85/box


Pink


7+3

 (10889) XS
 (10890) S
 (10891) M
 (10892) L

Perform

 200 gloves/box
 Reg. \$25.50/box
Net: \$17.85/box


Aqua


7+3

 (10914) XS
 (10915) S
 (10916) M
 (10917) L
 (10918) XL

Transform

 100 gloves/box
 Reg. \$9.90/box
Net: \$6.93/box


Ice Blue


7+3

 (10863) XS
 (10864) S
 (10865) M
 (10866) L
 (10867) XL

Distinct

 100 gloves per box
 Reg. \$17.95/box
Net: \$12.57/box


Creamy White


7+3

 (20079) XS
 (10910) S
 (20077) M
 (20078) L
 (20080) XL

Vibrant

 100 gloves per box
 Reg. \$12.50/box


Creamy Beige


 (10893) XS
 (10894) S
 (10895) M
 (10888) L

Amazing

 300 gloves per box
 Reg. \$26.90/box


Purple


 (14960) XS
 (14961) S
 (14962) M
 (14963) L

Sonic

 300 gloves/box
 Reg. \$24.90/box


Cobalt Blue



Promotion with ALL Free Goods program : Dealers to send monthly free goods claims to Supermax, no longer than 30 days after the end of the period. Promotions can be canceled at anytime. Supermax will not pay any distributor surcharge for free goods handling.

1+2

Earloop Surgical Masks

3 ply, fluid-resistant, enclosed aluminum nosepiece, high breathability, latex-free



● (11782) Level 1 Blue
Reg. 6.50/box **Net: \$2.17/box**

● (10899) Level 3 Blue
● (10898) Level 3 Rose
Reg. \$7.50/box **Net: \$2.50/box**



1+2

Hand Sanitizer Moisturizer

dermas_{ep}tyl The new 2 in 1 solution 

(19535) 500 ml, 16 bottles per case
Reg. \$19.95 **Net: \$6.65/bottle**

(19538) 60 ml, 28 bottles per case
Reg. \$5.95 **Net: \$1.98/bottle**



1+2

Disinfectant with Peroxide

Eliminates 99.99% of germs, Made with 0.5% (w/w) hydrogen peroxide, Fragrance-free

(20916) Per-Oxy Activated
32 oz | 946ml
Reg. \$22.95/case **Net: \$7.65/case**

(13643) Disinfecting wipe
160 wipes, 8 bottles per case
Reg. \$15.95/bottle **Net: \$5.32/bottle**



1+2 of the same

Self-adhesive Bib

3 ply, fluid-resistant, enclosed aluminum nosepiece, high breathability, latex-free

(10861) Case 4 rolls
Reg. \$49.98/case **Net: \$16.66/box**

(10859) Dispenser (1 roll)
Reg. \$24.95/box **Net: \$8.32/box**



Paper Cups

Rolled rim for improved comfort and control.
10 bags of 100 cups / 1000 cups per case

● (C00004) Blue ● (20038) Aqua
4 oz | 118 ml 5oz | 148ml
Reg. \$65/case



Tray Cover

Manufactured from a unique heavy-weight paper stock non-sterile

(18966) 8.5" x 12.25" | 25 cm x 31 cm
Reg. \$40.50/box



Plastic Cups

5 oz | 148 ml, 1000 pcs/case

● (12104) Pink
● (12109) Lavender
○ (12108) White

Reg. \$49.50/case



Premium Sponges

(12100) 2" x 2" | 5 cm x 5 cm
5000 sponges/case
Sale: \$56.75/case

(12101) 4" x 4" | 10 cm x 10 cm
2000 sponges/case
Sale: \$79.20/case



Promotion with ALL Free Goods program : Dealers to send monthly free goods claims to Supermax, no longer than 30 days after the end of the period. Promotions can be canceled at anytime. Supermax will not pay any distributor surcharge for free goods handling.

2+1

Biodegradable Paper Cup New

100% BIODEGRADABLE
5 oz | 148 ml, 20 bags of 50 cups / 1000 cups per case

- (11331) White
- (14778) Pink
- (13651) Blue
- (11066) Green
- (11249) Lavender
- (10871) Aqua

Sale: \$65 Net: \$43.33/case



2+1

Premium Shoe Covers

Polypropylene, non-conductive
300 shoe covers/case

(13048) Extra large and non-skid
Reg. \$16.95/box **Net: \$11.30/box**



2+1

Self-sealing Sterilization Pouches

CLASS 4

			Reg.	Net.
200pcs/box	12152	2.5" x 4" - 6 x 10 cm	\$8.49	\$5.66
	12153	2.75" x 9" - 7 x 23 cm	\$10.95	\$7.30
	12154	3.5" x 5.25" - 9 x 13 cm	\$12.95	\$8.63
	12151	3.5" x 9" - 9 x 23 cm	\$11.95	\$7.97
	19431	5.5" x 6.5" - 14 x 17 cm	\$14.95	\$9.97
	12156	5.25" x 10" - 13 x 25 cm	\$22.95	\$15.30



PurCotton Biodegradable Sponges

100% cotton, 4 ply, non-woven, lint-free, non-sterile

(10856) 2" x 2" | 5 cm x 5 cm
4000 sponges/case
Reg. \$64.50/case

Sale: \$61.90/case **Net: \$49.52/case**



(10857) 4" x 4" | 10 cm x 10 cm
2000 sponges/case
Reg. \$105/case

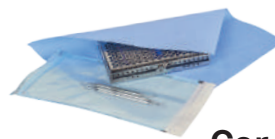
Sale: \$95.90/case
Net: \$76.72/case



Supermax Cotton Rolls

100% cotton, no cellulose or rayon fibres, soft, pliable, lint-free, absorbs up to 10 times their weight

(12033) 1.5" x 3/8",
29 grams, 2000/Box
Reg. \$21.99/box
Sale: \$18.99/box



Csr Sterilization Wraps

			Reg.	Net.	Sale
20039	1000 per box	12" x 12" 30 x 30 cm			\$124.50
20040	500 per box	15" x 15" 40 x 40 cm			\$88.50
20041	500 per box	18" x 18" 45 x 45 cm			\$103.50
20042	500 per box	20" x 20" 50 x 50 cm			\$123.50
20043	500 per box	24" x 24" 60 x 60 cm			\$169.50
20044	250 per box	30" x 30" 75 x 75 cm			\$138.50

Promotion with ALL Free Goods program : Dealers to send monthly free goods claims to Supermax, no longer than 30 days after the end of the period. Promotions can be canceled at anytime. Supermax will not pay any distributor surcharge for free goods handling.

PREMIUM Waxed Dental Floss



NYLON DENTAL FLOSS
15-meter trial size, 72 pcs/box
(20084) Mint waxed
(20085) Unflavored waxed
Reg. \$36.95/box



FLOSS REFILL
200 yards/roll
(20083) Mint waxed
Reg. \$4.99/roll



FLOSS DISPENSER
with 200 yards floss
(20082) Mint waxed
Reg. \$5.99/ea



DISPOSABLE MOUTH MIRROR
Assorted 6 Bright Colors, 48 pcs/bag
(20209)
Reg. \$20.95/bag



FLOSS DISPENSER
Beige color only
(20210)
Reg. \$7.99/ea



FLOSSII™ FLOSSERS PICKS
White, 50 bags of 4/box
(20211)
Reg. \$20.95/box



KIDSFLOSSII™ FLOSSERS
4 Assorted shapes and colors
50 bags of 4/box
(20212)
Reg. \$19.95/box

ORTHODONTIC TOOTHBRUSH



12 Brushes/Box,
Assorted 4 colors
Reg. \$9.89/box

V-shape
(20089)

A-shape
(20090)

IMPLANT & SURGERY SOFT TOOTHBRUSH



Soft end-tufted
bristles
(20091)



Long soft
bristles
(20092)

12 Brushes/Box,
White colors
(20091)
Reg. \$19.99/box
(20092)
Reg. \$9.89/box

END-TUFTED SPECIALTY BRUSH



Assorted in blue,
green, mauve and
orange
48pcs of 1/box
Reg. \$33.59/box

(20086)

DENTURE CAREBRUSH



Flat Trimmed Brush
Color: Blue, Magenta
and Assorted
2 colors
(20087)
Reg. \$17.21/dz

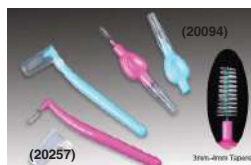
INTERDENTAL BRUSHES & INTERDENTAL ANGLE BRUSHES

50 bags/box
Reg. \$20.99/box



Orange & Green Assorted
Interdental Brushes (20093)

Orange & Green Assorted
Interdental Angle Brushes (20258)



Light Blue & Mauve Assorted
Interdental Brushes (20094)

Light Blue & Mauve Assorted
Interdental Angle Brushes (20257)



Dark Blue & White Assorted,
Interdental Brushes (20095)

Dark Blue & White Assorted,
Interdental Angle Brushes (20256)



Dual Action Brush
Color: Tangerine/White,
Blue/White and
Assorted 2 colors
(20088)
Reg. \$20.97/dz

SPIREBRUSH™ INTERDENTAL FLOSSING BRUSHES 5 pcs /pack **Reg. \$2.99 /bag**



2 mm-3 mm Tapered
Assorted in Lite Colors
(20096)



2 mm-4 mm Tapered
Assorted in Neon Colors
(20097)



3 mm-7 mm Tapered
Assorted in Neon Colors
(20098)

AirLight® M800 Smart

LED High Speed Handpiece



Don't have to wait for Boxing Day Sale!

**Buy 2 Get 1
FREE**



**Triple
Water Spray**



Direct-LED



**Built-in
Generator**

SPECTRUM DAY TORONTO 2024



OCTOBER 25TH, 2024

Location: Toronto Congress Centre
(South Building)
650 Dixon Rd, Etobicoke, ON M9W 1J1

**BOOTH
#301**

NEW DENTIST SYMPOSIUM 2024



OCTOBER 27-28, 2024

Location: Delta Toronto Hotel
75 Lower Simcoe St
Toronto, ON M5J 3A6



WARRANTY NOTICE - Atop Dental Canada Inc. may not be the authorized distributors appointed by some manufacturers of the products ("Manufacturers") to market the products in Canada and U.S.A. Although the product may be similar to those distributed in Canada and other parts of the world by the Manufacturer's distributors, are not purchased from the manufacturers directly and may not be warranted by the manufacturer's which may refuse to honour the manufacturer's warranty accompanying the product. Atop will honour the manufacturer's warranty and/or quality guarantee accompanying the product. Some offers may end earlier, please check accordingly. Atop Dental Canada Inc is not responsible for any typographical errors. Prices are subject to change without prior notice. *All brands are holders of their respective trademarks. Valid October 1- December 31, 2024.

Document #: ENC036R1/08.15.24



Atop Dental Canada Inc.
595 Middlefield Rd
Toronto, Ontario, M1V 3S2
Canada
T: 1-877-703-3562 or 416-293-2868
F: 1-866-680-8748
E: order@atopdent.ca

CANADA		POSTES
POST		CANADA
	Postage paid	Port payé
	Personalized Mail	Courrier personnalisé
	4007797	