

# Dental Equipment & Supplies PROMOTIONS



Jan-Mar, 2026

Q1

**Comfortek X3**<sup>®</sup>

**Atop Dental Canada Inc** Call us at: 1-877-703-3562 or 416-293-2868

Fax: 1-866-680-8748 Email: [order@atopdent.ca](mailto:order@atopdent.ca) Feedback or complaints: [management@atopdent.ca](mailto:management@atopdent.ca)

Follow Us: [f](#) Atop Dental Canada Inc. [@atopdentalcanada](#) [@atopdent](#) [in](#) Atop Dental Canda Inc.

**Buffalo**<sup>®</sup>

**Thermaknife**



**On Sale**

See **P40** for details

**parkell**<sup>®</sup>

**Accufilm II**



**On Sale**

See **P58** for details

**SHOFU**<sup>®</sup>

**Beautiful Flow Plus**



**4+1 Free** (14245)

See **P72** for details

**ProEdge**<sup>®</sup>

**BluTab**



**On Sale**

See **P79** for details

Subscribe to us for  
latest promotions:  
[www.atopdent.ca](http://www.atopdent.ca)



App Download  
**Apple Store**



App Download  
**Google Play**

# Table of Contents

## Q1 New Products



### 04

Duray Sensor

### 06

Dental Chair X3/X1

### 22

NuFona Handpieces

### 24

Canaview V2



## EQUIPMENT

- 3 **A** **New!** Piezo Scaler Trade-in
- 16 **A** **New!** Handpieces
- 24 **A** **New!** Equipment
- 28 **A** Endodontics
- 29 **A** Piezo Scalers
- 30 **A** Tips
- 31 **A** Imaging & Digital X-Ray
- 37 Dental Chair Accessories
- 38 Lab Equipment
- 39 Vacuum & Compressors

- 53 Cements & Liners
- 53 Crown & Bridge
- 54 Endodontic
- 57 Impression
- 59 Pins & Posts
- 59 Laboratory
- 59 Preventative
- 60 Restorative
- 64 Surgical

- 39 Tech-West
- 50 **New!** SS White
- 51 Midwest
- 52 Dentamerica
- 52 Bausch
- 54 Beutlich
- 56 **New!** Mark3
- 62 **New!** DiaDent
- 64 GluStitch
- 64 Orabloc
- 65 MYCO Medical
- 65 Miltex
- 66 **New!** 4D Rubber
- 67 **New!** HuFriedy Group
- 68 **New!** Shofu
- 69 Silmet
- 71 American Eagle
- 72 Plasdent
- 73 ProEdge
- 74 USA Instruments
- 75 Office Essential Spare Parts

**A** Atop Exclusive

## SUPPLIES

- 10 **A** Infection Control
- 40 **A** **Atop Brands**
- 43 Best Sellers
- 45 **A** **Atop Exclusive Promo**
- 46 **A** Gloves Giveaway
- 49 Lab Burs
- 49 Burs
- 54 Alloys / Articulating

## VENDORS

- 11 **New!** Germiphene
- 12 **New!** Medicom
- 14 **New!** Aurelia
- 26 **A** Enbio
- 26 **A** **New!** Tuttnauer
- 27 **A** Terragene
- 27 **A** Beyes
- 29/57 Parkell
- 38/70 **New!** Zest Dental

## EASIEST WAY TO GET THE BIGGEST GIFTS\*

- \$20 Gift Card** with purchase of **\$500**
- \$50 Gift Card** with purchase of **\$1,000**
- \$100 Gift Card** with purchase of **\$2,000**
- \$200 Gift Card** with purchase of **\$3,000**
- \$300 Gift Card** with purchase of **\$4,000**



## Price Match!

Show us a lower advertised price and we will beat or match it!\*

## CANADA WIDE FREE SHIPPING

Make purchasing more flexible and easier with Atop!

**Ontario:** minimum order of **\$299**

**Other Provinces:** minimum order of **\$599**

\*Some restrictions may apply. Please call for details. Items with a do not qualify for gift cards. Promotional products also qualify! Exclusive Equipment offers cannot be combined with any other promotion. For orders over \$4,000, each increments of \$1,000, buyer is eligible for additional \$50 Gift Card of buyer's choice.

Items with a sign will need a shipping fee due to their sizes and weights. Equipment and other items may have shipping fees. Orders are processed with your local sales tax regulations.



# Trade up to NEW Beyes® Comfort-Sonic®

## Comfort-Sonic® P9

Get \$450 credit towards a new Piezo Unit P9 when you trade-in your old Piezo or Cavitron Units!

(The old Unit can be any brand, year, model, style, and condition)



(14572)

Regular Price: **\$1,500**

Trade-in Value: **-\$450**

**FOR ONLY \$1,050/ea**

## Comfort-Sonic® P6 Plus

Get \$300 credit towards a new Piezo Unit P6 Plus when you trade-in your old Piezo or Cavitron Units!

(The old Unit can be any brand, year, model, style, and condition)



(14573) \* Water line required

Regular Price: **\$877.45**

Trade-in Value: **-\$300**

**FOR ONLY \$577<sup>45</sup>/ea**



### FILL

Scan QR code or go to this link:

[https://atopdent.ca/en/comfort\\_sonics/new](https://atopdent.ca/en/comfort_sonics/new)  
to complete trade-in form.



### SHIP

SHIP your trade-in Piezo Unit to:  
**Atop Dental Canada Inc.**



### RECEIVE

For each trade-in Piezo Unit,  
you will receive a brand new Comfort Sonic®  
P6 Plus for **\$577.45** OR P9 for **\$1,108.65**.

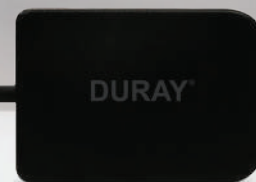




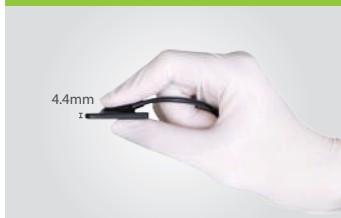
# DURAY<sup>®</sup>

## Intraoral Sensor

**THE DIGITAL SOLUTION  
YOU ARE LOOKING FOR!**



### Ultra-Thin & Comfortable Design



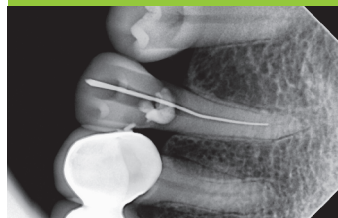
With an ultra-thin 4.4mm portfolio and ergonomically designed with rounded corners, it is easier than ever to position for bitewing images and offers a maximum level of patient comfort.

### Durable & Reliable Performance



Duray Sensor is waterproof with IP68 protection and can be immersed in disinfectant liquids to prevent cross infections. Made with premium materials and designed with robust CNC shell fusion ultrasonic welding technology and tested with thousands of bending experiments during production processes to ensure durability and a long product life cycle.

### High-Resolution CMOS Imaging



The leading 16-bit ADC chip brings you up to 60000+ greyscale crystal clear images in seconds. A high-definition sensor of up to 2.2 million pixels provides a theoretical resolution of 25 lp/mm. Produces clear and detailed images with very good contrast and sharpness for diagnosis so that subtle root apex bifurcation can be easily found.

### Effortless Plug-and-Play Setup



Duray Sensor provides easy-to-operate and straightforward software with one-click smart installation and offers plug-and-play simplicity with a high-speed USB 2.0 connection. Equipped with powerful image processing functions, so you can significantly and quickly improve the quality of radiographs.

(20232)

### Size 1 + Size 2 Package

**Reg. \$8,969.95**

**Sale: \$7,644**

**Get \$500 Gift Cards or \$500 Atop Credit**

Plus 1 Sensibles Universal Sensor Holder Starter Kit (13237)



**30-Day  
Satisfaction  
Guarantee**

### Available in 4 sizes



(19037) 25\*19\*4.4mm  
**Reg. \$3,118.65**  
**Sale: \$2,865<sup>18</sup>**



(20231) 31\*21\*4.4mm  
**Reg. \$4,159.95**  
**Sale: \$3,617<sup>26</sup>**



(19036) 34\*25\*4.4mm  
**Reg. \$4,549.95**  
**Sale: \$3,822**



(20230) 37\*27\*4.4mm  
**Reg. \$5,198.65**  
**Sale: \$4,436<sup>29</sup>**

**Get \$300 Gift Cards or \$300 Atop Credit**



### Compatible with Most Major Imaging Software:

Apertyx, Dexis, Dentrax Ascend, Eaglesoft, Open Dental, Suni, Schick, Tigerview, Vixwin, XDR, and more!

### Warranty:

Duray Intraoral Sensor comes with a two-year replacement warranty against manufacturer defects. Atop offer extended warranty and Duray Care Protection. Please contact us for full details.



\*Credit applicable on your next order. Credit card payments please add 3% processing fee. All offers will require a proof of purchase dated from January 1 to March 31, 2026 and must be reflected on one invoice. Offers must be redeemed no later than April 15, 2026. Please allow 4 to 8 weeks for promotion to be processed. All brands are holders of their respective trademarks.



# DURAY®

## Intraoral Sensor EXTENDED WARRANTY

### EXTRA 1 YEAR WARRANTY

(Original warranty is 24 months)

(20702)	For Duray Sensor Package (Size1+ Size2)	<b>\$935</b>
(20700)	For Duray Sensor Size 1 Only	<b>\$435</b>
(20701)	For Duray Sensor Size 2 Only	<b>\$545</b>
(11482)	For Duray Sensor Size 0 Only	<b>\$380</b>
(11484)	For Duray Sensor Size 1.5 Only	<b>\$490</b>

### DURAYCARE PROTECTION PLAN

(Full replacement for sensor including incidents of accidental or physical damage,  
Max. replacement is 1 time per sensor)

(20240)	For Duray Sensor Package (Size1+ Size2)	<b>\$1558/2 years</b>
(20241)	For Duray Sensor Size 1 Only	<b>\$725/2 years</b>
(20242)	For Duray Sensor Size 2 Only	<b>\$908/2 years</b>
(11487)	For Duray Sensor Size 0 Only	<b>\$634/2 years</b>
(11488)	For Duray Sensor Size 1.5 Only	<b>\$816/2 years</b>



\*If Extended Warranty is purchased, add-on for DurayCare Protection Plan purchase will automatically extend to cover for 36 months. Buy it within 60 days of initial purchase of sensors.

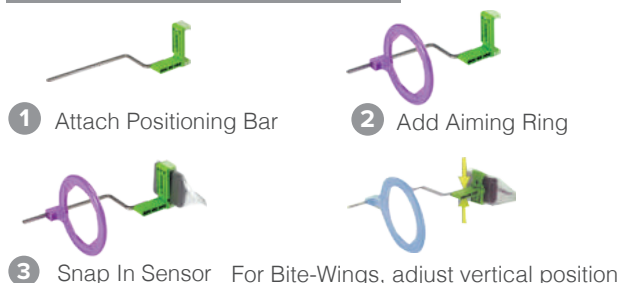
**Beyes®**  
The Next Standard

**Sensibles™** COMPATIBLE WITH ALL BRAND SENSORS!!

## UNIVERSAL SENSOR HOLDER STARTER KIT

- Everything you need to capture the perfect image is inside!
- Adjusts easily; holds securely
- Perfect for Anterior, Posterior and Bite-Wing images
- Autoclavable and reusable
- Durable and 100% latex-free

Using Sensibles is as easy as 1-2-3



Effective January 1st - March 31st, 2026



(13237) Reg. \$297.65  
**Atop Exclusive: \$236**

### Include:

Positioning Arm Posterior x1  
Positioning Arm Bite Wing x1, Positioning Arm Anterior x1  
Bite Block Large Size x2, Bite Block Medium Size x2  
Posterior Aiming Ring x1, Anterior/Bite Wing Aiming Ring x1

We now also sell as individual parts

(10784)	Positioning Arm Posterior	<b>\$75.06/pk</b>
(10781)	Positioning Arm Bite Wing	<b>\$65.60/pk</b>
(10783)	Positioning Arm Anterior	<b>\$75.06/pk</b>
(14934)	Bite Block Size Medium, Refill	<b>\$136.08/12pk</b>
(14935)	Bite Block Size Large, Refill	<b>\$136.08/12pk</b>
(12237)	Anterior/Bite Wing Aiming Ring	<b>\$21.32/pk</b>
(12233)	Posterior Aiming Ring	<b>\$21.32/pk</b>



\*All offers will require a proof of purchase dated from January 1 to March 31, 2026 and must be reflected on one invoice. Offers must be redeemed no later than April 15, 2026. Please allow 4 to 8 weeks for promotion to be processed. All brands are holders of their respective trademarks.

## Comfortek® X3

The Comfortek® X3 is designed and built to meet industrial standards, utilizing an advanced production process to deliver superior quality for stable and reliable performance.

Equipped with high-performance motors, the Comfortek® X3 ensures smooth operation with minimal noise. Its ergonomic design, along with the seat and backrest-linked chair (where the seat and backrest move in sync), further enhances patient comfort.

- Floor-standing water unit, rock-solid and stable base
- Ergonomic design, with seat and backrest linked chair
- Efficient, with precision control of seat position

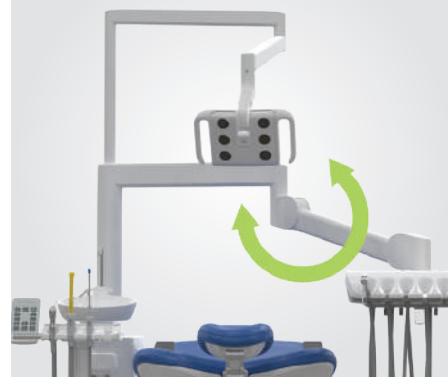
### Upgraded Electric-control Dentist Element



### Seat and Backrest Linked Chair



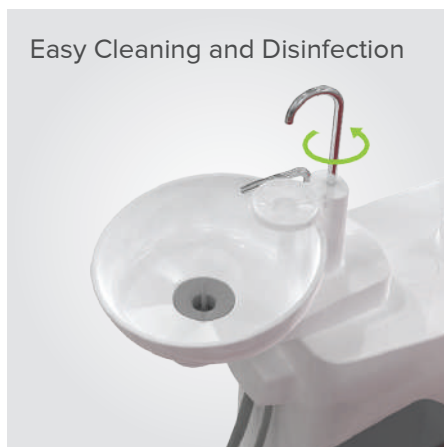
### Great Movability



### 2 Optional Position



### Easy Cleaning and Disinfection



### Swivel Armrest





## Comfortek X3® EXPERT Dental Operating System

### Includes:

- Stitched upholstery design
- **Synchronized movement of backrest and patient chair**
- **Premium right armrest swing-able**
- Flexible delivery system with control panel
- 3 programmable memory positions
- **One 6-Pin fiber-optic tubing**
- **Built-In LED scaler**
- **4 instrument position on premium swiveling assistant side with memory positions**
- Removable and 360° rotatable stainless water outlet
- M7 LED light
- Main switch for all (air, water and electricity)
- 4-way foot switch
- Disc Foot Pedal with Water ON/OFF Switch
- **Dentist and assistant stool**
- Premium color collection
- Extended 8 years warranty parts, 1 year labor & parts

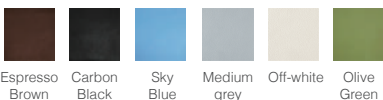


(11393)

Compared to \$24,995

**INTRO PRICE: \$19,995**

### Color Option:



Espresso Brown Carbon Black Sky Blue Medium grey Off-white Olive Green

## Comfortek X3® MASTER Comprehensive & Advanced Technology

### Includes:

- Stitched upholstery design
- Synchronized movement of backrest and patient chair
- Premium right armrest swing-able
- **Luxury operating light & dentist table arm**
- **Flexible delivery system with Luxury Touch Display Control Panel**
- 3 programmable memory positions
- **Heavy-duty aluminum dentist table**
- **Two 6-Pin fiber-optic tubing**
- Built-In LED scaler
- **Built-in electric motor**
- 4 instrument position on premium swiveling assistant side with memory positions
- Removable and 360° rotatable stainless water outlet
- M7 LED light
- Main switch for all (air, water and electricity)
- 4-way foot switch
- **Proportional foot control**
- Dentist and assistant stool
- **Luxury color collection**
- Extended 8 years warranty parts, 1 year labor & parts

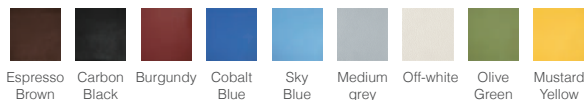


(11394)

Compared to \$27,995

**INTRO PRICE: \$22,995**

### Color Option:



Espresso Brown Carbon Black Burgundy Cobalt Blue Sky Blue Medium grey Off-white Olive Green Mustard Yellow

\*Shipping and Installation not included. Credit card payments please add 3% processing fee. All offers will require a proof of purchase dated from January 1 to March 31, 2026 and must be reflected on one invoice. Offers must be redeemed no later than April 15, 2026. Please allow 4 to 8 weeks for promotion to be processed. All brands are holders of their respective trademarks. Comfortek X3 packages are only available for use for dental offices and dental professionals.



## Comfortek® X1 Dental Operating System

Originated from the design concept of German engineers and after more than 10 years of process improvement, the innovated Comfortek X1 has a robust structure and meets highest ergonomic and safety standards.

- Flexible control with high reliability.
  - Comfortable to use and durable.
  - Convenient for cleaning and disinfection.
- More hygienic.



**Reliable & Durable**



**Double-articulated headrest  
and comfortable seat**



**Flexible Control**



**Simple and Quick Operation**



**Dimmable Sensor LED Light**



**Intelligent and Ergonomic  
Doctor and Assistant Seating**



**Complete Hygienic**



**Full Foot-Control**



**Main switch for all  
(air, water and electricity)**



## Comfortek X1® EXPERT

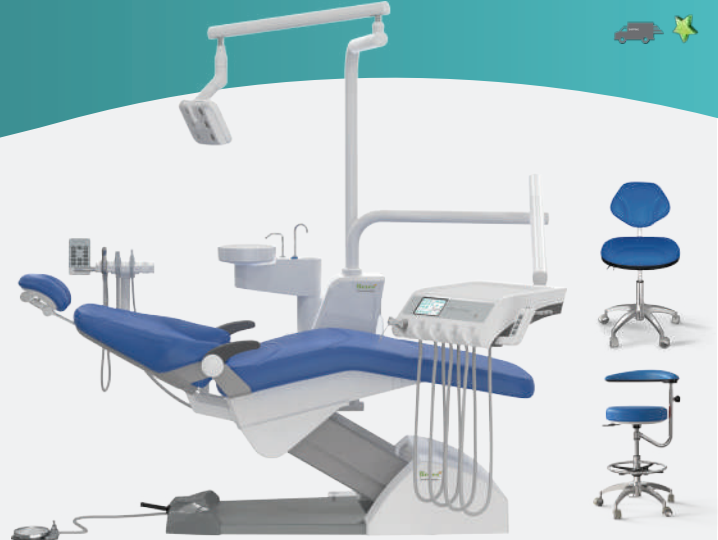
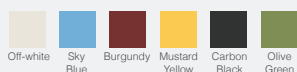
Dental Operating System

### Includes:

- Stitched upholstery design
- Heavy-duty aluminum backrest
- Double post design
- Flexible delivery system with control panel
- 3 programmable memory positions
- **One 6-Pin fiber-optic tubing**
- **Built-in piezo scaler**
- 4 instrument position on premium swiveling assistant side with premium control panel
- Removable and 360° rotatable stainless steel water outlet
- Main switch for all (air, water and electricity)
- **M7 LED light**
- 4-way foot switch
- **Dentist and assistant stool**
- Premium color collection
- Extended 8 years warranty parts, 1 year labor & parts

(20401)  
Compared to \$17,599  
**Sale: \$14,079**

### Color Option:



## Comfortek X1® MASTER

Comprehensive & Advanced Technology

### Includes:

- Stitched upholstery design
- Heavy-duty aluminum backrest
- Double post design
- **Flexible delivery system with luxury touch display control panel**
- **Air lock switch with 5-way joystick**
- 3 programmable memory positions
- **Two 6-Pin fiber-optic tubing**
- Built-in piezo scaler
- **Built-in electric motor**
- 4 instrument position on premium swiveling assistant side with premium control panel
- Removable and 360° rotatable stainless steel water outlet
- Main switch for all (air, water and electricity)
- M7 LED light
- 4-way foot switch
- Dentist and assistant stool
- **Luxury color collection**
- Extended 8 years warranty parts, 1 year labor & parts

(20504)  
Compared to \$21,999  
**Sale: \$19,999<sup>98</sup>**

### Color Option:



### Optional Configurations:



Monitor Arm Extended  
(Extra flexible)



Canaview Intraoral  
All-in-One System



Assistant Tray



Secondary Tray



Handpiece Light Source  
System



Electric Motor

and more...

Hygenic\*

## Dental Rubber Dam

(14836) 6"X6", 36Pcs/Box, Medium Blue

(14834) 6"X6", 36Pcs/Box, Medium Green

Reg. \$39.95

**Sale: \$36<sup>95</sup>**



(11766) 6"X6", 15pcs/Box, Non-Latex dental dam

Reg. \$49.95

**Sale: \$47<sup>95</sup>**

Blossom\*

## Latex Dental Dam

5"X5", 52Pcs/Box

(10965) Green Mint (10966) Blue



6"X6", 36Pcs/Box

(10967) Green Mint (10968) Blue

Reg. \$13.50

**4+1 FREE = \$10<sup>80</sup>/box**

PDI\*

## Sani-Cloth Plus

160 Sheets/Can

(14104) Large, 6"x6.75"

Reg. \$17.95/can

**8+4 FREE = \$11<sup>96</sup>/can**



Metrex\*

## CaviWipes

(10033) Large, 160Sheets/Can 6"X6.75"

Reg. \$23.95/can

**12+ @ \$19<sup>95</sup>/can**

(10034) X-Large, 65Sheets/Can 9"X12"

Reg. \$23.95/can

**3+1 FREE = \$17<sup>96</sup>/can**



SciCan\*

## Optim 33TB

(13935) Large, 160Sheets/Can 6"X6.75"

Reg. \$29.95/can

**Sale: \$25<sup>20</sup>**



Microcopy\*

## Neo Dry

Regular Reflective

(11769) (11771) Yellow, Small

(11768) (11770) Blue Large

Reg. \$35.95/box

**Sale: \$27<sup>95</sup>**

**4+ @ \$25<sup>95</sup>/box**



## BM Group

1X4L/Btl.

(10954) BM-1000 Deluxe Anti-Microbial Hand Soap

Reg. \$28.95/btl

**Sale: \$26<sup>99</sup>**

(10978) BM-4000 Isopropyl Alcohol 70%

Reg. \$56.95/btl

**Sale: \$49**

(10979) BM-4100 Isopropyl Alcohol 99%

Reg. \$67.50/btl

**Sale: \$55<sup>25</sup>**

(10984) BM-4200 Denatured Ethanol Alcohol 99%

Reg. \$49.90/btl

**Sale: \$43<sup>90</sup>**



## BM Group

(11005) BM-5000, Ultrasonic General Purpose

Reg. \$39.95



(11007) BM-5200, Ultrasonic Plaster & Stone Remover

Reg. \$49.95



(11008) BM-6000, Evacuation System Cleaner

Reg. \$49.95



(11015) BM-6400, Ethanol Disinfectant & Cleaner

Reg. \$51.99



(11006) BM-5100, Ultrasonic Tartar & Stain Remover

Reg. \$49.95



(10976) BM-28+, Activated 2% Glutaraldehyde

Reg. \$49.99



Metrex\*

## CaviCide

(10030) 1 Gallon Btl.

Reg. \$51.99/btl

(10032) 2.5 Gallon Btl.

Reg. \$109.95/btl



Professional's Choice\*

## Class 4 Self-Sealing Sterilization Pouches

200/box

(18387) 2.25" x 4"

Reg.

\$9.95

**Sale**

**\$7<sup>99</sup>**

(18388) 2.75" x 10"

\$11.95

**\$9<sup>95</sup>**

(18389) 3.5" x 6.5"

\$11.95

**\$10<sup>95</sup>**

(18390) 3.5" x 10"

\$12.95

**\$11<sup>95</sup>**

(18391) 5.25" x 11"

\$20.95

**\$16<sup>99</sup>**





Dental Health\*

**Dri-Angles**

Plain With Silver  
 (12096) (12098) Large, 320 Pcs/Box  
 (12097) (12099) Small, 400 Pcs/Box  
 (12094) (12095) Combo, 200 small, 160 Large

Reg. \$36.95

**Sale: \$28<sup>95</sup>**

Crosstex\*

**Comfort Plus® Premium Saliva Ejectors**

100Pcs/Bag

(11827) White/White  
 (11824) Clear/White  
 (11826) White/Pink (Bubblegum Scented)  
 (11825) White/Green (Mint Scented)

Reg. \$12.35

**Sale: \$10<sup>99</sup>****Fineese Nitrile Examination Gloves**

100 Gloves by Weight/Box

(21235) XS (21231) S

(21232) M (21233) L

Reg. \$13.99/box

**5+5 FREE = \$6<sup>99</sup>/box**

Medicom\*

**Cotton Rolls**

2000Pcs/Case

(13799) Medium #2 11/2"x 3/8" (38mmx10mm)

Reg. \$39.99



Atop\*

**Level 3 Face Mask**

(19978) Blue, 50Pcs/Box

Reg. \$19.99/box

**5+5 FREE = \$9<sup>99</sup>/box****5+5 FREE**

Atop\*

**Level 3 Surgical Gown**

(19995) Disposable, Large, 10Pcs/Pack

Length: 120 cm / 47.5 in

Shoulder to cuff: 58.5 cm / 23 in

Shoulder to Shoulder: 75 cm / 29.5 in

Reg. \$59.90/pack

**1+1 FREE = \$29<sup>95</sup>/pack**

Defend\*

**Tray Cover**

(12034) White, 1000Pcs/Box

Reg. \$49.95

**Sale: \$47<sup>99</sup>**

Defend\*

**X-Ray Head Sleeves**

(12026) Clear, 15"x26", 250Pcs/Box

Reg. \$69.99

**Sale: \$65<sup>99</sup>****Polypropylene Headrest Sleeves**

250Pcs/Box

	Reg.	Sale
(18778) Small 9.5"x11"	\$29.95	\$19 <sup>95</sup>
(10679) Large 9.5"x14"	\$35.95	\$23 <sup>95</sup>

**GERMIPHENE®**

A Division of Young Specialties

**2026 Q1 PROMOTIONS****Gobble Plus | Evacuation System Cleaner**

(12694) 2L

Reg. \$110

**Sale: \$99<sup>59</sup>**

(12695) 10L

Reg. \$435

**Sale: \$389<sup>59</sup>****GermiCide<sup>3</sup> | Multi-Surface Disinfectant**

(10153) Germicide3, Unscented, 3.78L

Reg. \$55.99

**5+1 FREE = \$46<sup>66</sup>****GermiCide<sup>3</sup> | Multi-Surface Disinfectant**

(14192) Germicide3 Refill, Unscented, Small, 160 ct

Reg. \$22.99

**5+1 FREE = \$19<sup>16</sup>**



## SafeMask SofSkin ClearFit

Procedure Earloop Face Masks

☐ 14832 ClearFit

ASTM  
LEVEL  
...3

50 masks/box; 10 boxes/case

**7+3**

Reg. **\$33.99**

Net. **\$23.79**

## SafeMask SofSkin

Procedure Earloop Face Masks

☐ 10168

☒ 10169

☐ 10166

ASTM  
LEVEL  
...3

50 masks/box; 10 boxes/case

**7+3**

Reg. **\$27.99**

Net. **\$19.59**

## SafeMask Curve

**NEW**

Procedure Earloop Face Masks

☐ 14837

☒ 14835

ASTM  
LEVEL  
...3

25 masks/box; 8 boxes/case

**7+3**

Reg. **\$14.99**

Net. **\$10.49**

## SafeMask Classics™

Procedure Earloop Face Masks

☐ 13846

☒ 13847

☐ 13848

☐ 14833

ASTM  
LEVEL  
...3

50 masks/box; 10 boxes/case

**5+5**

Reg. **\$18.99**

Net. **\$9.50**

## Midnight™

Procedure Earloop Face Masks

Breathability and comfort.

☒ 13780

ASTM  
LEVEL  
...3

50 masks/box; 10 boxes/case

**Sale**

Reg. **\$19.50**

Sale **\$16.99**

## SafeBasics

Dental Tray Covers

☐ 13801 8 1/2 x 12 1/4"


1000/case

**Sale**

Reg. **\$62.50**

Sale **\$49.99**

# AssureCheck™ 10HR

Biological Indicator

**Test. Incubate.  
Validate.**
**11493** Dry Block Incubator

Buy 1, get  
1 free box  
of (11492)

1 unit/box  
**Reg. \$1,017.99**

**11492** AssureCheck 10HR 25 units/box

**2+1** **Reg. \$173.99**  
**Net. \$115.99**



## SafeBasics™ True Fit Thin™

Nitrile Medical Examination Gloves

- 11855** (XS)  **11856** (XS)
- 13821** (S)  **11853** (S)
- 13826** (M)  **11185** (M)
- 11852** (L)  **11850** (L)



300 gloves/box; 8 boxes/case

**5+3** **Reg. \$47.99**  
**Net. \$29.99**

## AssureTouch Basics

Nitrile Medical Examination Gloves

- 13093** (XS)
- 13095** (S)
- 13096** (M)
- 13097** (L)



100 gloves/box; 10 boxes/case

**5+5** **Reg. \$13.99**  
**Net. \$6.99**

## SafeSeal Quattro

Self-Sealing Sterilization Pouches

- 13816** 2 1/4 x 4"



200 pouches/box

**Sale** **Reg. \$25.50**  
**Sale \$17.99**

## DentiCare Swivel

Oscillating Disposable Prophylaxis Angle

- 12311** Soft
- 12310** Firm

100 units/box

**2+1** **Reg. \$179.95**  
**Net. \$119.96**

- 14835** Brush

100 units/box

**2+1** **Reg. \$296.95**  
**Net. \$179.96**



## SafeWear Hipster Jacket

Premium Protective Apparel

- 8101 A-D** Deep Blue
- 8103 A-D** Plum Purple
- 8104 A-D** Soft Blue
- 8105 A-D** White Frost
- 8118 A-C** Black

12 units/bag, Hip Length Jacket

**3+1** **Reg. \$52.99**  
**Net. \$39.74**



Free goods promo items shipped with order. No mix and match.

Mils are measured at the palm and estimated based on a range of measurement. tData on file.  
Medicom reserves the right to modify pricing and/or promotions at any time and without prior notice.

Proudly headquartered in Canada.  
Globally connected.



# PROMOTION



VALID JAN, FEB, MAR 2026

## Distinct

Latex - 5.5 mil, 100/box, Creamy White

(10863) XS (10864) S (10865) M  
(10866) L (10867) XL

Reg. \$12.99/box **Net: \$10.39/box**



**8+2**

## Sonic

Nitrile - 2.2 mil, 300/box, Cobalt Blue

(14960) XS (14961) S  
(14962) M (14963) L

Reg. \$25.99/box **Net: \$20.79/box**



**8+2**

## Perform

Nitrile - 2.5 mil, 200/box, Aqua

(10889) XS (10890) S  
(10891) M (10892) L

Reg. \$19.99/box **Net: \$15.99/box**



**8+2**

## Transform

Nitrile - 2.0 mil, 100/box, Ice Blue

(10914) XS (10915) S (10916) M  
(10917) L (10918) XL

Reg. \$9.99/box



## Amazing

Nitrile - 2.0 mil, 300 gloves/box, Purple

(10893) XS (10894) S  
(10895) M (10888) L

Reg. \$27.99/box



## Vibrant

Latex - 5.7 g, 100/box, Creamy Beige

(20079) XS (10910) S (20077) M  
(20078) L (20080) XL

Reg. \$12.50/box **Sale: \$11.99/box**



## Supermax Cotton Rolls

(12033) 1.5" x 3/8",

29 grams, 2000/Box

Reg. \$21.99/box **Sale: \$18.99/box**



## Tray Cover

(18966) 8.5" x 12.25" | 25 cm x 31 cm

Reg. \$39.99/box



## Paper Cups

10 bags of 100 cups | 1000 cups per case

- (10872) Blue 4 oz | 118 ml
- (20038) Aqua 5oz | 148ml

Reg. \$39.99/case



## Earloop Surgical Masks

- (11782) Level 1 Blue

Reg. 6.99/box **Net: \$4.66/box**

- (10899) Level 3 Blue
- (10898) Level 3 Rose

Reg. 7.99/box **Net: \$5.33/box**



**2+1**

All free goods are delivered by distributors.

Promotion with ALL Free Goods programs : Dealers are to send monthly free goods claims to Supermax, no later than 30 days after the end of the period. Promotions can be cancelled at any time. Supermax will not pay any distributor surcharge for free goods handling.

For any questions please contact our customer service | Free goods must be of equal or lesser value to the original product purchased

Supermax Healthcare Canada  
1001 Jean-Talon, Saint-Bruno-de-Montarville, QC Canada J3V 0N3

aureliaglovescanada.com • cservice@supermaxcanada.com • 1 866 428-9188



# PROMOTION



VALID JAN, FEB, MAR 2026

## Premium Shoe Covers

(13048) XL, non-skid

100/box

Reg. \$14.99/box **Net: \$9.99/case**



**2+1**

## Premium Sponges

(12100) 2" x 2" | 5 cm x 5 cm | 5000/case

Reg. \$57/case **Sale: \$33.99/case**

(12101) 4" x 4" | 10 cm x 10 cm | 2000/case

Reg. \$79/case **Sale: \$42.99/case**



## Self-adhesive Bib

(10861) Case 4 rolls

Reg. \$48.99/box **Net: \$32.66/box**

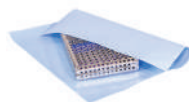
(10859) Dispenser (1 roll)

Reg. \$23.99/box **Net: \$15.99/box**



**2+1**

## Csr Sterilization Wraps



Reg. **Sale**

20039	1000/box	12" x 12"   30 x 30 cm	\$129	<b>\$67.99</b>
20040	500/box	15" x 15"   40 x 40 cm	\$ 95	<b>\$66.99</b>
20041	500/box	18" x 18"   45 x 45 cm	\$110	<b>\$90.99</b>
20042	500/box	20" x 20"   50 x 50 cm	\$120	<b>\$96.99</b>
20043	500/box	24" x 24"   60 x 60 cm	\$175	<b>\$149.99</b>
20044	250/box	30" x 30"   75 x 75 cm	\$145	<b>\$122.99</b>

## PurCotton Biodegradable Sponges

(10856) 2" x 2" | 5 cm x 5 cm, 4000/case

Reg. \$71.99/case

(10857) 4" x 4" | 10 cm x 10 cm, 2000/case

Reg. \$110.99/case



## Disinfectant with Peroxide

(13643) Disinfecting wipe, 160 wipes,

Reg. \$16.99/bottle



## Headrest Covers

(13794) White 10" x 10", 500/box

Reg. \$49/box **Sale: \$40.99/box**

(13795) White 10" x 13", 500/box

Reg. \$57/box **Sale: \$45.99/box**



## Self-sealing Sterilization Pouches



CLASS 4

Reg. **Sale**

200pcs/box	12152	2.5" x 4" - 6 x 10 cm	\$8.49	<b>\$5.99</b>
	12153	2.75" x 9" - 7 x 23 cm	\$10.99	
	12154	3.5" x 5.25" - 9 x 13 cm	\$12.99	
	12151	3.5" x 9" - 9 x 23 cm	\$11.99	
	19431	5.5" x 6.5" - 14 x 17 cm	\$15	<b>\$9.99</b>
	12156	5.25" x 10" - 13 x 25 cm	\$23.99	

All free goods are delivered by distributors.

Promotion with ALL Free Goods programs : Dealers are to send monthly free goods claims to Supermax, no later than 30 days after the end of the period.

Promotions can be cancelled at any time. Supermax will not pay any distributor surcharge for free goods handling.

For any questions please contact our customer service | Free goods must be of equal or lesser value to the original product purchased

Supermax Healthcare Canada  
1001 Jean-Talon, Saint-Bruno-de-Montarville, QC Canada J3V 0N3

aureliaglovescanada.com • cservice@supermaxcanada.com • 1 866 428-9188



# AirLight® M800 Xtraordinary

Powerful Quiet Revolutionary

## Limitless PSI Technology

Experience the freedom from operating pressure control

## X Ball Bearings

Lasts 4x longer than other ball bearings

## Instant Stop Technology

Eliminates backflow and prevents cross-contamination

**Torque  
35W**



- Direct LED Without Fiber Optics
- 35W of Torque
- 430,000 RPM
- Quattro Spray

- Built-In Generator
- Extra Quiet
- Titanium Body with Micro-Tex Finish
- 25 Months Warranty



**BUY 1, GET 1 FREE**

Reg: \$1,884.<sup>95</sup>/ea **Net: \$942.<sup>48</sup>/ea**

Effective January 1st - March 31st, 2026

### Beyes® PD Mini Head (19475)



### Star® Mini Head (19476)



### Kavo® Mini Head (19473)



### NSK® Mini Head (19474)



### Award Winning



\*Free goods must be of equal or lesser value and cannot be combined with any other offers. All offers will require a proof of purchase dated from January 1 to March 31, 2026 and must be reflected on one invoice. Offers must be redeemed no later than April 15, 2026. Please allow 4 to 8 weeks for promotion to be processed. All brands are holders of their respective trademarks.

**Beyes®**  
The Next Standard



# | Handpieces

## Beyes®

### Surgical 45 Handpieces

- 45° Head Design
- Rear Air Exhaust
- Stream water
- Swivel and Quick Disconnect
- 1 Year Warranty

#### M200: Non-Optic

(13116) 4 Hole Backend

**\$570<sup>65</sup>/ea**



#### M800: LED

(18887) 4 Hole Backend  
 (13165) NSK® Backend  
 (18885) Beyes® PD Backend  
 (19708) Beyes® QD Backend  
 (13172) Star® Backend  
 (13160) Kavo® Backend



**\$883<sup>95</sup>/ea** **2+1 FREE** = **\$589<sup>30</sup>/ea**

### Maxso® M200 Smart

- Non-Optic
- Push Button Chuck
- Micro-tex Surface
- Triple Water Spray
- 1 Year Warranty

**Backend**      **Mini Head**  
 4 Hole      (13115)

**\$353<sup>55</sup>/ea**

**Backend**      **Mini Head**  
 Beyes® PD      (13183)  
 Star®      (13132)

**\$336<sup>70</sup>/ea**



**Atop Exclusive** **1+1 FREE** = **\$168<sup>35</sup>/ea**

### Maxso® M200E

- Non-Optic
- Single Spray
- Push Button
- Stainless Steel
- 6 Months Warranty



(13138) Midwest® 4 Hole

**\$205<sup>35</sup>/ea** **5+1 FREE** = **\$171<sup>17</sup>/ea**

### Maxso® X200X

- 35W of Torque
- 430,000 RPM
- Instant Stop Capability
- Quattro Spray
- Titanium Body
- 25 Months Warrant



**Backend**      **Mini Head**  
 NSK®      (19677)  
 KAVO®      (19678)

**\$1,559<sup>95</sup>/ea** **1+1 FREE** = **\$779<sup>98</sup>/ea**

### Maxso® X200 Smart

- Fiber-Optic
- Push Button Chuck
- Micro-tex Surface
- Triple Spray
- Connect directly to Kavo® Multiflex Coupler
- 1 Year Warranty



**Backend**      **Mini Head**  
 NSK®      (13068)  
 KAVO®      (13133)

**\$714<sup>95</sup>/ea**

**Atop Exclusive** **3+1 FREE** = **\$536<sup>21</sup>/ea**

**Repair Service:** High Speed handpieces are one of the main tools in your operatory. We offer prompt repairs, excellent service and your choice of aftermarket turbines. - Free installation - 1 year warranty on the rotor - 6 months on ball bearing

Atop Exclusive

Buy 2 PD HP Get 1 FREE PD Coupler!



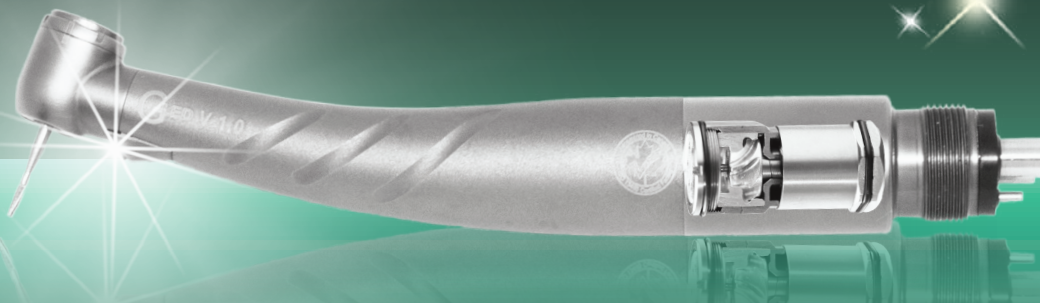
\$186  
Value

# AirLight® M800 Smart

HIGH SPEED HANDPIECE



## Just Brilliantly Bright Illumination!



- Direct LED
- Built-in Generator
- Ceramic Ball Bearings
- Push Button Auto Chuck
- 3-Ports Coolant Spray
- Swivel and Quick Disconnect
- 1 Year Warranty

Compatible with a great variety of coupling systems:

**4 Hole** Mini Head (13143)



**Beyes® PD** Mini Head (13182)



**W&H®** Mini (13149)



**NSK®** Mini Head (13164)



**Kavo®** Mini Head (13159)



**Star®** Mini (13171)



Effective January 1st - March 31st, 2026

**Buy 2 Get 1 FREE**

Reg. \$812.<sup>45</sup>/ea

Net: \$541.<sup>63</sup>/ea

**Beyes®**  
The Next Standard

\*Free goods must be of equal or lesser value and cannot be combined with any other offers. All offers will require a proof of purchase dated from January 1 to March 31, 2026 and must be reflected on one invoice. Offers must be redeemed no later than April 15, 2026. Please allow 4 to 8 weeks for promotion to be processed. All brands are holders of their respective trademarks.

# | Handpieces

**Beyes**

## Maxso® Contra-Angle

1 Year Warranty

Screw-on  
(14287) CS1-CH09

**\$194<sup>95</sup>/ea**

**3+1 FREE = \$146<sup>21</sup>/ea**



Snap-on  
(14286) CS1-CH08

**\$194<sup>95</sup>/ea**

**3+1 FREE = \$146<sup>21</sup>/ea**



Latch Type, CA Burs  
(14281) CS1-CH04

**\$214<sup>45</sup>/ea**

**3+1 FREE = \$160<sup>84</sup>/ea**



Push Button, CA Burs  
(14279) CS1-CH02

**\$246<sup>95</sup>/ea**

**3+1 FREE = \$185<sup>21</sup>/ea**



Push Button, Fiber-Optic,  
Internal Spray  
(19592) M29L-MH01

**\$714<sup>95</sup>/ea**



## Air Motor

**Atop Exclusive**

Without Water Spray (13858) M20A-NS/M4

**\$440<sup>65</sup>/ea 2+1 FREE = \$293<sup>77</sup>/ea**



Internal Water Spray 4 (13857) M20A-IS/M4

**\$519<sup>95</sup>/ea**



## Heads

For Screw-on

(14270) CH09

**\$129<sup>95</sup>/ea**



For Snap-on

(14269) CH08

**\$129<sup>95</sup>/ea**



For Latch Type/ For CA Burs

(14265) CH04

**\$123<sup>45</sup>/ea**



For Push Button/ For CA Burs

(14263) CH02

**\$162<sup>45</sup>/ea**



## Sheaths

1:1  
(14257) CS1

**\$149<sup>45</sup>/ea**



4:1  
(14258) CS4

**\$337<sup>95</sup>/ea**



## Straight Nosecone

\*Not recommended for prophyl angles such as Maxso EP12-NS

For HP Burs  
(14441) S20A-NS\*

**\$188<sup>45</sup>/ea**

**3+1 FREE = \$135<sup>53</sup>/ea**



## Maxso® X97

- Push Button For CA burs
- CH02 and Shaft (Non-dismantle)
- Max Speed 40,000 RPM
- 1:1 Direct Drive

\*Non-dismantle

(19403) **\$218<sup>40</sup>/ea**

**Atop Exclusive 3+1 FREE = \$163<sup>80</sup>/ea**



**Repair Service:** High Speed handpieces are one of the main tools in your operatory. We offer prompt repairs, excellent service and your choice of aftermarket turbines. - Free installation - 1 year warranty on the rotor - 6 months on ball bearing



## Maxso® X92

- 20:1 Implant Handpiece
- Non-optic
- Push Button
- CA Burs
- Fit into major implant motors
- 1 Year Warranty



(19470) **\$909<sup>95</sup>/ea**

## Maxso® M05A/M4

- 5,000 RPM
- 4-hole backend
- 1 year warranty
- For disposable Propy Angles



(19057) **\$647<sup>40</sup>/ea**

## Maxso® EP12-NS

- 4:1 Hygiene Handpiece
- For Disposable Propy Angle
- Connect Directly to Your Existing Motor



(19588) **\$402<sup>95</sup>/ea**

**3+1 FREE = \$302<sup>21</sup>/ea**

## EZ-Swivel® Couplers

1 Year Warranty

(13181) Beyes PD connection, 4 Holes

**\$220<sup>95</sup>/ea**

**2+1 FREE = \$147<sup>30</sup>/ea**



(13146) Beyes QD connection, 4 Holes

**\$220<sup>95</sup>/ea**

**3+1 FREE = \$165<sup>71</sup>/ea**



(13135) Kavo® connection, 4 Holes, Non-Optic

(13136) Kavo® connection, 6 Holes, Fiber-Optic

**\$370<sup>45</sup>/ea**

**2+1 FREE = \$246<sup>97</sup>/ea**



(13166) NSK® connection, 4 Holes, Non-Optic

(17062) NSK® connection, 6 Holes, Fiber-Optic

**\$370<sup>45</sup>/ea**

**2+1 FREE = \$246<sup>97</sup>/ea**



## Disposable Saliva Ejector With Dental Mirror

- ALL IN ONE to help retract, provide better vision, and suction!
- Feather Light During Treatment
- Anti-Fog Mirror
- Allows Two Handed Dentistry
- Provides More Patient Comfort



Feather Light  
During Treatment



Anti-Fog Mirror



Allows Two  
Handed Dentistry



Provides More  
Patient Comfort

(20501) Saliva Ejector Mirror Kit

Includes 1 handle and 500 disposable mirror heads

**Atop Exclusive \$99<sup>25</sup>/kit**

(20500) Saliva Ejector Handle

Includes 1 handle and 1 disposable mirror head

**Atop Exclusive \$25<sup>95</sup>/ea**



## Turbine

1 Year Warranty

**For Midwest®**

(14157) Stylus  
(14158) Stylus 540



**For Star®**

(14151) 430



(14154) Tradition-Push  
Button  
(14153) Tradition-Latch



**For W&H®**

(14123) TA-98PB  
(14124) TA-98LED/ LW



**For NSK®**

(14162) TI-Max X600  
(14163) TI-Max X700



(14125) TA-96  
(14126) TA-97



**For Kavo®**

(14137) 630,640



(14139) 647,649



(14138) 632, 633, 639  
642, 643, 645



(14140) 6000B  
(14141) 6500B  
(14142) 4500,5000



Reg: \$278/ea **Sale: \$249/ea**

\*Replaced by Atop

# Maxso® E800

## Electric Handpiece System

Beyes® has made upgrading to the newest electric technology easy with the Maxso® E800. Equipped with a touch screen interface and 3 programmable preset speeds, this brushless electric micromotor system is designed with ultimate user-friendliness in mind. With customizable settings, the system is the perfect solution for all high-speed and low-speed applications. Its quiet motor delivers uncompromised power – featuring advanced rotational control technology, resulting in only the smoothest and steadiest operation. Integrate the Maxso® E800 into your practice with ease and start experiencing the advantages of electric today.



**REVOLUTIONARY TECHNOLOGY  
MADE EASY!**



### Benefits & Features:

- **Powerful:**  
5.0 Ncm of torque
- **Steady Performance:**  
Speed of rotations is controlled between 2,000 and 40,000min-1
- **Smooth Operation:**  
Torque ripple and heat reduction technology eliminates vibrations
- **Convenient & Durable:**  
Smooth and easy to clean surface with autoclavable brushless motor
- **3 Programmable Memory Settings:**  
Easily switch between speed presets for more efficient workflow
- **New Touch Screen Interface:**  
Easily and quickly navigate through menu settings on a color LCD display panel

(20200) Portable Electric Micromotor System  
**Reg. \$2,404.95**

**Atop Exclusive \$1,974.<sup>96</sup>**

(20201) Built-in Control Unit **\$2,404.95**

### Packages:

#### MT8001KIT1

(1) E800P + (1) X99L Attachment

**Reg. \$3,368.75**

**Sale: \$2,832.<sup>90</sup>**



#### MT8001KIT2

(1) E800P + (2) X99L Attachment

**Reg. \$4,370.65**

**Sale: \$3,684.<sup>29</sup>**



### Attachments:

#### Maxso® X99L

1:5 Contra Angle

- Anti-Heat System
- Ceramic Ball Bearing
- ISO E-Type Connection
- Quattro Spray
- Fiber-optic
- 12 Months Warranty



(14353)

**Reg. \$1,416.95/ea**

**2+1Free = \$944.<sup>63</sup>/ea**

#### Maxso® S20A-IS

Straight Attachment

- 1:1 Ratio
- Internal Spray
- For HP bur
- Straight Nose Cone Attachment



(19058) Non-optic, S20A-IS  
**Reg. \$396.45/ea**

(19593) Fiber-optic, S20A-IS/E6  
**Reg. \$675.95/ea**

#### Maxso® M29-MH01

Contra Angle Attachment

- 1:1 Ratio
- Internal Spray
- Push Button
- For CA Burs



(14357) Non-optic, M29-MH01  
**Reg. \$389.95/ea**

(19592) Fiber-optic, M29L-MH01  
**Reg. \$714.95/ea**



CLOSER TO YOU

YOU ALWAYS WIN WITH NUFONA



### NuFONA F2000

LIGHT-POWERED PRECISION AT HIGH SPEED

- Integrated fiber-optic illumination
- Smooth and quiet operation
- Durable & long-lasting performance
- Triple spray system
- 12 months warranty

(11499) Kavo® Backend

(11490) NSK® Backend



### Coupler

CONNECT WITH CONFIDENCE

- Quick-connect design
- 360° swivel rotation
- ISO / E-type compatible
- 12 months warranty

(11171) Kavo type, Swivel

(11478) NSK Ti-M type, Swivel



### NuFONA F1000

COMFORT-DRIVEN CONTROL AT HIGH SPEED

- Non-optic, cost-efficient design
- Textured Micro-Tex coating for secure grip
- Lightweight, ergonomic body
- Triple spray system
- 12 months warranty

(11476) 4 Holes Backend



### NuFONA Low Speed

BUILT FOR PRECISION AT LOW SPEED

- Smooth low-speed control
- Durable & reliable
- Balanced & ergonomic design
- 12 months warranty

#### Contra Angle

(11449) 1:1 Push-Button, CA Burs



(11448) 1:1 Latch Type, CA Burs



#### Straight Nose Cone

(11445) Non Optic, 20K, 1:1 Direct Drive, No water spray



#### Air Motor

(11173) External Spray, Non Optic, 20K, 1:1 Direct Drive, 4 Holes



### NuFONA Surgical 45

45° DESIGN FOR SUPERIOR ACCESS

- 45° angled head for posterior access
- Integrated fiber-optic illumination
- Improved visibility & control
- 12 months warranty

(11447) Kavo® Backend

(11446) NSK® Backend



### NuFONA Handpiece Kit

(11475) Latch Type, 4 Hole Non Spray, Non Optic,







## TORNADO X AIR DRIVEN HIGH SPEED

ULTIMATE RELIABILITY

60 years of know-how and passion is the secret that leads Bien-Air Dental today to offer exceptionally reliable products. Discover all our expertise and attention to detail in the new TORNADO X turbine.

- Accu-Chuck PreciPlus™ bur-locking and rotation drive mechanism
- Accu-Spray with LED illumination
- Sealed Head™ contamination control
- Cool Touch™ safety
- Custom-designed ceramic ball bearings
- Freedom movement
- **5 Year Warranty**

(19940) Tornado X LK

Reg- \$2,999

**Sale: \$2,499<sup>50</sup>**



## LUBRICARE MAINTENANCE SYSTEM

SIMPLIFIED MAINTENANCE

Quick, simple and economic - this perfectly sums up the Lubricare maintenance device, when used with Bien-Air's Spraynet and Lubrifluid products, with each spray specifically designed for a phase in the maintenance cycle: Spraynet, for dissolving impurities and cleaning the instrument both inside and out, and Lubrifluid, for effective lubrication of instruments. Lubricare and Bien-Air maintenance sprays support the daily use of your instruments, guaranteeing impeccable maintenance, optimal operation and an extended service life.

- 2 Year Warranty



(19932) Lubricare Maintenance system

Reg- \$3,735

**Sale: \$2,999**

(19935) Spraynet, Cleaning, 500 ML

Reg- \$109.90

(19936) Lubrifluid, Lubricating, 500 ML

**Sale: \$106<sup>14</sup>**

(19933) Oil Pad (5 Pack)

Reg- \$16.63

(19934) Tray Filter

**Sale: \$15<sup>12</sup>**

## OPTIMA ELECTRIC MOTOR SYSTEM

SIMPLICITY IS A COMPETITIVE ADVANTAGE

- For all Restorative applications
- No installation required
- MCX Motor Base Speed: 1,000-40,000 rpm
- With only one contra-angle, can achieve speeds of 5,000 - 200,000 rpm
- High consistent torque MCX LED Motor
- Upgrade any dental unit from air to electric
- 3 Year Warranty

(19938) MCX-LED

White, Portable

Reg- \$2,910.60

**Sale: \$2,399**



(19939) EVO15

Attachment 1:5,  
Electric Handpiece,  
**2 Year Warranty**

Reg- \$2,949.80

**Sale: \$2,590**



(19937) MCX  
w/ touchpad, Built-In

Reg- \$3130.60

**Sale: \$2,846**

## PROIMPLANT IMPLANTOLOGY SYSTEMS

ULTIMATE IMPLANTOLOGY

- For placing implants
- Preprogrammed operating sequences of top implant brands
- Integrated irrigation pump
- MX-I LED Motor
- High torque
- Ceramic bearings
- 2 Year Warranty



(19941) Proimplant Set

(Control + Motor + 20:1 Handpiece)

\*Credit card payments please add 3% processing fee.

Reg- \$7,336.36

**Sale: \$6,669<sup>42</sup>**

(19942) 20:1 Micro-Series

Implant Handpiece KM, Fiber Optic

Reg- \$3,532.22

**Sale: \$3,211<sup>11</sup>**

# SEE EVERY DETAIL WITH CANAVIEW<sup>®</sup> V2

## INTRAORAL CAMERA



(11494) Canaview<sup>®</sup> V2

Reg. \$1,818.65

**Atop Exclusive: \$ 1,279**



- True Auto-Focus
- Anti-Fog Design
- Responsive Capture Button
- 5 MP High Resolution Images
- Intuitive Camera Lighting System
- No Manual Adjustments Required
- Direct USB Connection to Computer
- Super Light-Weight
- 12 Months Warranty
- Complimentary Image Management Software:

*Abeldent, Adstra, Apixia, Apteryx, CaptureLink, Clio Soft, Cuve Hero, DBSWIN, Dentrix Ascend, Dentrix Image, Dexis, Diagora, Eaglesoft, EVAsoft, ImageFX, Kodak, MiPACS, Mogo, Open Dental, Romexis, Schick, Sidexis, Sopro Imaging, Tiger view, Umbie, VaTech EzDent, VisiQuick, Visix, VixWin*

**3 Zoom  
Options**

**3 Light  
Intensity  
Options**

“

I've used a few intraoral cameras, but the Beyes Intraoral Cam stands out. The image quality is super clear, making it easy to show patients exactly what's going on with their teeth. It's lightweight, easy to use, and connects smoothly without any hassle. Definitely a game changer for patient education and documentation!

”



Dr. Mark Lin

Beyes®

## CANAVIEW®

Intraoral Camera

An excellent communication tool that improves understanding and interaction with patients. It provides visual evidence that you need to educate patients and make more accurate diagnoses. Boasting a true autofocus and intuitive camera lighting system, this dental digital photography camera requires no manual adjustments and is easily shared between different examination rooms and chairs.



- 1 Year Warranty
- Canaview Intra-oral Camera comes with a one-year replacement warranty against manufacturer defects
- Direct USB connection to computer
- Ultra-wide and non-spherical lens
- Innovative Anti-fog design
- Lightweight and simple to use
- Complimentary Image management software included
- Ability to integrate into every leading software such as:



(19466)

**\$1,298<sup>65</sup>/ea** **2+1 FREE** = **\$865<sup>77</sup>/ea**

Beyes®

## Slimax-C Plus®

LED Curing Light System

- Powerful up to 2000 mW/cm2 (±10%)
- Built-in Digital Radiometer
- 3 Modes: Full Power, Ramping, Pulsing
- Rechargeable Lithium-ion Battery
- Cordless Design
- 5-Second Curing
- 1 Year Warranty

(14360) Blue  
(14362) Pink  
(14364) Silver



**\$812<sup>45</sup>/ea** **2+1 FREE** = **\$541<sup>63</sup>/ea**

## Accessories

(12793) Curing Light Guide-Black **\$128<sup>65</sup>**  
(12818) Tip Shield 8mm (pack of 3) **\$12<sup>55</sup>**  
(12819) Eye Protection Shield **\$10<sup>05</sup>**



Beyes®



## Masteri®

21 Minute Cycle 25 Months Warranty

Class B Autoclave

- This Class B autoclave meets and exceeds the latest regulatory requirements so you can focus on your practice.
- FastMasteri delivers industry leading sterilized instruments in approximately 21 minutes.
- The built-in data logger saves time and money storing your data on a USB stick. Internal printer option available.
- Sterilization options are easily accessible with the intuitive touch display to enhance user experience.



(19323) 18L/ 110V

(12752) 18L/ 220V

Reg: \$7,330



(19324) 23L/ 110V

(10377) 23L/ 220V

Reg: \$8,398



**Please call for our sale prices! 1-877-703-3562**

\*Credit card payments please add 3% processing fee.

Beyes®

## CareMaster®

Automatic Handpiece Maintenance System

- Maximize the life span of handpieces
- Economical, efficient and time-saving
- Filtered air used to rotate the handpieces for safety
- Care for all handpiece brands.
- Disposable mist filtration system
- Detachable door for easy cleaning
- Easy replenishment of solution tank
- 1 year warranty



\*Requires Airline Connection  
\*Coupler sold separately

(13186) 2 Turbine &amp; 1 E-Types

Reg: \$1,754.95 **Sale: \$1,559<sup>80</sup>**

(13188) 1 Turbine &amp; 2 E-Types

Reg: \$1,917.45 **Sale: \$1,754<sup>30</sup>**

**Includes 1 Free Maintenance Oil (1L)**



Individual controlled



No Mess



Air Regulator

(19305) Maintenance Oil (1 L) **\$97<sup>45</sup>**  
(13191) Mist Filter Set (12 Pcs/Pack) **\$63<sup>65</sup>**  
(13192) Oil Absorber Sheet **\$39<sup>65</sup>**  
(17084) Oil Replenish Funnel with Filter **\$23<sup>65</sup>**





**SWISS DESIGNED**

Class B TripleVacuum FDA Cleared

# BECAUSE TIME IS MONEY



**Enbio S**

World's fastest autoclave.  
Vacuum + drying.

**Atop**

**\$4,599**

**PLUS BONUS \$274 Value**






**BONUS:** January 1- March 31, 2026

- ▶ Atop Sterilization Pouches
- ▶ Beyes Dick Test
- ▶ Bowie Class 5 Integrator

Unwrapped FAST / 134°C	Wrapped Vacuum / 134°C	Wrapped Vacuum / 121°C
<b>7 min</b>	<b>15 min</b>	<b>45 min</b>

## T-EDGE AUTOCLAVES




The only gravity and airflow removal autoclave upgradable to pre/post vacuum.

-  **Fast Cycles**  
Fast cycle times for wrapped instruments, complete cycle, including drying.
-  **Optimal Chamber Capacity**  
More than 75% chamber capacity with 5 extra-long trays. 11" chamber sizes.
-  **Convenient Loading**  
Fast cycle times for wrapped instruments, complete cycle, including drying.
-  **Advanced Documentation**  
A variety of documentation and traceability options and barcodes.
-  **User-friendly Touchpad Control Panel**  
Displays programs, cycles times, water levels and more.

 **Please call us for price**

## 3870EAP

Automatic, large-capacity autoclave.

-  **Increase Productivity** Easy-to-use, single touch control system.
-  **Maintains Sterility** Closed door active drying system.
-  **Agile, Flexible Operation** Three pre-set sterilization programs.

Chamber Dimensions 15" x 30" Overall 34.5" x 26" x 20.6" **Atop Exclusive \$28,900**





## 24h Biological Indicator for Steam

(13090) Self-Contained Biological Indicator, 100/pk

Reg \$299 **Sale: \$219**



## Chemical Integrator for Steam (FDA)

(13092) Unique point Chemical Integrator, 200/pk

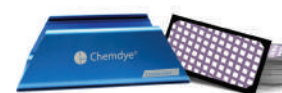
Reg \$55.90 **Sale: \$47<sup>50</sup>**



## Bowie-Dick Test Card Kit for steam

(13094) Bowie-Dick Test Card Kit, 120/pk

Reg \$339.00



**Beyes**  
The Next Standard

Effective January 1st - March 31st, 2026

LOWEST PRICES

ON THE MARKET!

### CI5-E1

Chemical Integrator for Steam Sterilization

- Type 5 Test, Single-use moving front chemical indicators for monitoring Steam sterilization process.
- Consists of a special wick and a steam and temperature sensitive chemical pellet.
- The migration is visible through a zone marked Accept or Reject.

Atop Exclusive  
**4+1 FREE**

Reg. \$31/pack  
**Net: \$24<sup>9</sup>/pack**



(14772)  
100/Pack



### CI5-P1

Unique Point Chemical Integrator for Steam Sterilization

- Type 5 Test, Single-use unique point chemical indicators that consist of paper strips printed with indicator ink.
- Intended to be placed in each pack, pouch, container, tray or other containment device to function as an independent monitor of critical parameters for sterilization cycles.
- Colour change indicates effective sterilization processes.

Atop Exclusive  
**4+1 FREE**

Reg. \$31/pack  
**Net: \$24<sup>9</sup>/pack**



(11959)  
200/Pack



### CI2-P1

Bowie-Dick Test Card

- Bowie Dick Test, Consists of a Type 2, metals free chemical indicator. Used in Class B Sterilizers.
- Use daily to monitor the effectiveness of air removal.
- Cycle information can be recorded on the back of the indicator.

Atop Exclusive  
**4+1 FREE**

Reg. \$251/pack  
**Net: \$200<sup>8</sup>/pack**



(14770)  
120/Pack



### Bowie-Dick Test + Holder Set

1 Box CI2-P1 (14770) + 1 Holder (11175)

**\$279**

Save \$87.5 when you buy it as a set!

Atop Exclusive

\*One promo per office



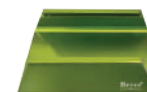
### Bowie-Dick Test Card Holder

- For Bowie Dick Test Card
- Metal Card Holder

Reg. \$115.50

**Sale: \$92<sup>5</sup>**

(11175)



\*All offers will require a proof of purchase dated from January 1 to March 31, 2026 and must be reflected on one invoice. Offers must be redeemed no later than April 15, 2026. Please allow 4 to 8 weeks for promotion to be processed. All brands are holders of their respective trademarks.

## Gutta-percha Obturation System

Effective January 1st - March 31st, 2026

### GPRO® P1

Gpro P1 adopts wireless, horizontal type, temperature adjusting, and left or right hand operation design, endowing it with outstanding function and characteristics.

- 0.2 Second Heating Time
- Ergonomic Design
- High Precision Temperature Control
- High-performance Conversion System
- 12 Months Warranty

### GPRO® F1

Gpro F1 adopts wireless, vertical type, and single button design, bringing easier obturation operation.

- Quick Heating within 15 Seconds
- 360° Rotatable Injection Needle
- Ergonomic Design
- Safer Protection Mechanism
- 12 Months Warranty



REVOLUTIONARY  
TECHNOLOGY  
MADE EASY!

	Reg.	Atop Exclusive
GPRO P1, Heating Pen (19396)	\$1,234.95	\$987.99
GPRO F1, Filling Machine (19395)	\$1,234.95	\$987.99
GPRO S1 (F1 + P1 Set) (19397)	\$2,274.95	\$1,778.39

Gutta Percha Bar Plus, 100 Bars (20259) \$49.99  
Limited Quantities Available!



\*All offers will require a proof of purchase dated from January 1 to March 31, 2026 and must be reflected on one invoice. Offers must be redeemed no later than April 15, 2026. Please allow 4 to 8 weeks for promotion to be processed. All brands are holders of their respective trademarks.



### Accurator® A2

Apex Locator, Compatible with G2 Endo Motor

- More than accurate
- Newly upgraded algorithm makes it more stable and enables stronger anti-interference ability.
- Multi-frequency apical position technology guarantees accurate measuring even if there is blood or residual pulp in the root canal.
- Measurement results will not be affected by the tooth type.
- 12 Months Warranty



(19394) Accurator A2

\$1,234.95 **Sale: \$1,080**

### ApexPilot® G1

Endo Motors

- Imported Motor
- Wireless Rechargeable Battery
- Automatic Torque Calibrating
- Nimble Contra-angle
- 12 Months Warranty

(19391) ApexPilot G1

\$974<sup>95</sup> **Atop Exclusive** 3+1 FREE = \$731<sup>21</sup>/ea



### ApexPilot® G2

Endo Motor, Connectable to Apex Locator

- Connectable to Apex Locator
- High Performance Brushless Motor
- Efficient & Safe
- Lower Noise
- 6:1 Super Mini Contra-angle
- 12 Months Warranty



(19392) ApexPilot G2

\$1,156<sup>95</sup> **Atop Exclusive** 3+1 FREE = \$867<sup>71</sup>/ea

### ApexPilot® G3

Endo Motor with Built-in Apex Locator

- Built-in Apex Locator
- Integrated Length Determination
- Plastic and Adjustable Contra-angle
- All-angle OLED Screen
- Maximum Compatibility
- 12 Months Warranty



(19393) ApexPilot G3

\$1,818<sup>65</sup>





## TurboSensor®

Ultrasonic Scaler

*The Backbone of Many Offices' Hygiene Department*

"Finding a piece of equipment as durable, affordable, and effective as the TurboSensor is like finding the holy grail of dentistry."

– Monica Rogers, BSDH, RDH

**New**

- Versatile and dependable.
- Clearly marked intuitive controls.
- Automatically adjusts frequency to power any 25KHz or 30KHz Parkell insert.
- Autoclavable handpiece sheaths improve infection control.
- On-demand foot-controlled Turbo Power Boost for heavy calculus.



- Broad range of power easily accommodates both the sensitive patient with light deposit to the patient who hasn't had a professional scaling in years, as well as everyone in between.
- Expanded low-power "Perio" mode.

(12960) Pearl

**Includes:**

- Scaler unit
- Two autoclavable handpiece sheaths
- In-line water filter with spare disk
- Quick-disconnect water connection
- Foot controller



**Reg: \$1,900**

**Sale: \$1,845<sup>99</sup>**

\*PLEASE NOTE: Parkell scalers are designed to work with Parkell inserts. While other manufacturers claim to produce inserts that are compatible, Parkell cannot guarantee proper performance therewith. Please see our Warranty Policy for additional information.



## EasyProphy®

Air Polishing & Cleaning System

- Ergonomic Design
- Flexible in 360 degrees
- Swivel and Quick Release
- Cleaning with taste
- 1 Year Warranty



\*Powder sold separately

**Quick Disconnect, Swivel**

(12784) EasyProphy 200/QD

**\$1,090**

**Atop Exclusive 2+1 FREE = \$726<sup>67</sup>/ea**

(12785) H1, Handpiece with Nozzle

**\$534.00**



## Comfort-Sonic®

LED Piezo Scaler

- Detachable Handpiece
- Autoclavable Up to 135 Degrees
- Three Modes: Scaling, Perio, Endo
- Powerful with easy adjustable design
- Built-in Water Regulation
- Daylight LED: Maximize Visibility & Minimize Eye Fatigue



P6 Plus

\*Water line required

(14573) P6 Plus

**Includes:** 6 tips ( EE1, 2xEG1, EG2, EG4, EP1)  
(value at \$150)

**\$877<sup>45</sup>**

(14572) P9

**includes:** 8 tips ( EE1, EG1, EG4, EG5, EG6, EP1, EP3, EP4D), 1 tip holder, 2 water bottle (value more than \$400)

**\$1,500**



P9

## LED Scaler Handpiece (Fiber Optic)

(14568) UHP-EF, Compatible with Beyes and EMS

**\$395<sup>85</sup>**



## Scaler Handpiece (Non Optic)

(14566) UHP-E, Compatible with Beyes and EMS

(14567) UHP-S, Compatible with Satelec

**\$341<sup>85</sup>/ea**



## Tip holder

(14680) #1

**\$27<sup>55</sup>/ea**



## Tip holder

(14681) #2

**\$36<sup>35</sup>/ea**



## Tip Wrench

(14649) WEF



(14648) WST



**\$32<sup>45</sup> 5+2 FREE = \$23<sup>18</sup>/ea**

## Sterilization Cassette

(14744) Holds one handpiece, torque wrench, endo wrench and tips

**\$126<sup>05</sup>/ea**



EMS\* & Beyes\* Compatible

Satelec\* & NSK\* Compatible

4+1  
FREE

## Scaling

Popular

used to remove calculus and plaque on supragingival, neck of teeth and hard calculus on the teeth point

\$31.55/ea

Net: \$25<sup>24</sup>/ea

(14586) E-G1  
(14628) S-G1

Equivalent to EMS\* Type B  
used to remove supragingival heavy calculus

(14587) E-G2  
(14629) S-G2

Equivalent to EMS\* Type P  
used to remove the calculus of supragingival, subgingival interdental calculus and plaque

(14678) E-G3  
(14679) S-G3

Popular

Equivalent to EMS\* Type A  
used to remove all supragingival calculus and plaque

(14588) E-G4  
(14630) S-G4

Equivalent to NSK\* G1  
SATELEC\* #1  
used to remove supragingival and neck calculus and plaque

(14589) E-G5  
(14631) S-G5

Equivalent to EMS\* Type C  
NSK\* G2  
SATELEC\* #2  
used to remove supragingival heavy calculus

(14590) E-G6  
(14632) S-G6

used to remove dental crown and mend material

(14605) E-G7  
(14647) S-G7

## Perio

\$35.65/ea

Net: \$28<sup>52</sup>/ea

Popular

used to remove subgingival calculus.

(14591) E-P1  
(14633) S-P1

Popular

Equivalent to EMS\* Type PS  
used to remove subgingival and deep perio calculus.

(14592) E-P3  
(14634) S-P3

Equivalent to EMS\* Type PDL3  
used to level on the surface of endo during the periodontal flap surgery.

(14593) E-P3D  
(14635) S-P3D

Equivalent to NSK\* G4  
SATELEC\* #10P  
used to remove subgingival calculus and interdental calculus.

(14594) E-P4  
(14636) S-P4

can replace the traditional Greamer, used for preparing good endo jaws.

(14595) E-P4D  
(14637) S-P4D

Left angled, to remove calculus from very narrow inter-root spaces and furcation.

Left angled, diamond-coated, to remove calculus from very narrow inter-root spaces and furcation.

Right angled, to remove calculus from very narrow inter-root spaces and furcation.

Right angled, diamond coated, to remove calculus from very narrow inter-root spaces and furcation.

\$67.65/ea

Net: \$54<sup>12</sup>/ea

(14606) E-P2L  
(14658) S-P2L

(14608) E-P2LD  
(14650) S-P2LD

(14607) E-P2R  
(14659) S-P2R

(14609) E-P2RD  
(14651) S-P2RD

## Endo

Equivalent to EMS\* Type H  
NSK\* E6  
SATELEC\* #S07

\$42.25/ea

Net: \$33<sup>80</sup>/ea

Aer root canal cleaning, using the mechanism and heat energy of ultrasonic vibration to integrate the filling lateral condensation, to make sure the top of scaler tip touches the lateral condensation.

(14598) E-E3  
(14640) S-E3

used to remove the calcification and bad lining material of pulp cavity, overhang pulp chamber.

(14599) E-E3D  
(14641) S-E3D

Diamond coated, for re-treatments of extremely hard materials.

(14611) E-E4D  
(14653) S-E4D

To remove calculus and temporary cements and broken instruments in the coronal third.

(14612) E-E5  
(14654) S-E5

Diamond-coated, with enhanced cutting and abrasive power laterally. Specially useful for removing very hard materials on the canal wall.

(14613) E-E5D  
(14655) S-E5D

## NITI U-File

6 Pcs/Pack

\$35.05

Net: \$28<sup>04</sup>/pack

(14672) #15  
(14673) #20  
(14674) #25  
(14675) #30  
(14676) #35  
(14677) #40

(20° Angle Holder)

for:NITI K-Files, usually used for premolar root canal cleaning, sterilizing and taking out the stem in root canal.

(14596) E-E1  
(14638) S-E1

(95° Angle Holder)

for:NITI K-Files, usually used for distomolar root canal cleaning, sterilizing and taking out the stem in root canal.

(14597) E-E2  
(14639) S-E2

Burs holder, used to expand root canal and grind teeth.

(14614) E-E8  
(14656) S-E8

Burs holder, used to expand root canal and grind teeth.

(14615) E-E9  
(14657) S-E9

## Restorative

\$55.85/ea

Net: \$44<sup>68</sup>/ea

Upper Hemispherical ball sprayed finishing with diamond grain, to remove the carious teeth without damaging the adjacent teeth.

(14601) E-SB2  
(14643) S-SB2

Ball diamond tip. To remove the carious teeth without damaging the adjacent teeth.

(14600) E-SB1  
(14642) S-SB1

Lower hemispherical ball sprayed finishing with diamond grain, to remove the carious teeth without damaging the adjacent teeth.

(14602) E-SB3  
(14644) S-SB3

Half ball diamond tip. Set 45 to the left, to remove the carious teeth without damaging the adjacent teeth

(14603) E-SBL  
(14645) S-SBL

Half ball diamond tip. Set 45 to the right, to remove the carious teeth without damaging the adjacent teeth.

(14604) E-SBR  
(14646) S-SBR

# DURAY® V2

## DC X-Ray Unit

State of the art DC technology, finest focal spot of 0.4, and a wide range of preset exposure settings ensure excellent image quality and a low radiation dose for your patients. See all the details you need for precise diagnosis. The light, solid and stable arm assures smooth movement and reliable positioning.



### Automatic DAP Display

The built-in Dose Area Product allows dose monitoring, thus supporting safety procedures and patient radiation protection. The dose can be shown with every exposure on the control panel display.

### Rectangular Beam Limiting Device

Reduce the patient dose by using the optional rectangular beam limiting device available in film size 0 and 2.

### Excellent Image Quality

Finest focal spot of 0.4, advanced DC technology and a wide range of preset exposure settings ensure excellent image quality with every exposure.

### Remote Solution

The wall mount and timer can be installed separately allowing to control the exposure from outside the X-ray room. This solution ensures radiation safety as well as easy installation and integration into your dental practice.

**(20019) DURAY V2**  
60kV & 70kV, 50/60 Hz, 80cm arm length

**Reg. \$5,978.65**

**ATOP EXCLUSIVE**

**Bundle of 2 for \$9,999**

**+ \$1,000 ATOP CREDIT**

### Special

Any Duray V2 purchased and installed by Atop will include 2 year of Harp Test\*

\*Free Harp inspection must be done by Atop and in the GTA area.



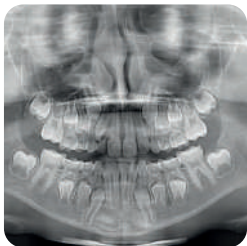
# DURAY® 2D

## Extraoral X-ray Series

The Duray® 2D is the latest addition to Beyes® gamma line of panoramic platforms, providing nine specialized panoramic programs, an integrated touchscreen, and convenient future proofing. In an era where remote upgrades hold growing significance, the Duray® 2D platform is intentionally designed for easy remote enhancement. Drawing from the well-established Duray® 3D platform in the market, the Duray® 2D introduces unmatched innovation to the world of panoramic imaging.

The most versatile 2D platform in our Extraoral gamma line has arrived: the Duray® 2D Ceph. With its exceptional panoramic and one-shot cephalometric capabilities, it can be effortlessly upgraded to 3D at any time. Elevate your clinic to a whole new level whenever you choose, and attain a comprehensive 3-in-1 solution by swiftly and easily adding the 3D module. Select your preferred ceph size-18x24cm or 30x24cm-and achieve outstanding images, all thanks to the state-of-the-art CSI-CMOS flat panel sensor.

Its elegant and compact design, smart backlight and touchscreen, automated sensor movement, and ergonomic patient positioning provide the ideal solution for modern clinics.



### Duray 2D

#14194

- Smart Backlight
- Integrated Touchscreen
- Advanced Sensor
- New Dynamic and Automatic Image Focusing

Reg. \$37,800

Introductory Special:

**\$29,900**



### Duray 2D CEPH

#14195

- One Shot Ceph
- Advanced Sensor
- Smart Backlight

Reg. \$63,800

Introductory Special:

**\$46,080**



\*The price does not include base plate. \* Installation is subject to local regulations. \*Only installed on 6 compatible computers.

All offers will require a proof of purchase dated from January 1 to March 31, 2026 and must be reflected on one invoice. Offers must be redeemed no later than April 15, 2026. Please allow 4 to 8 weeks for promotion to be processed. All brands are holders of their respective trademarks.

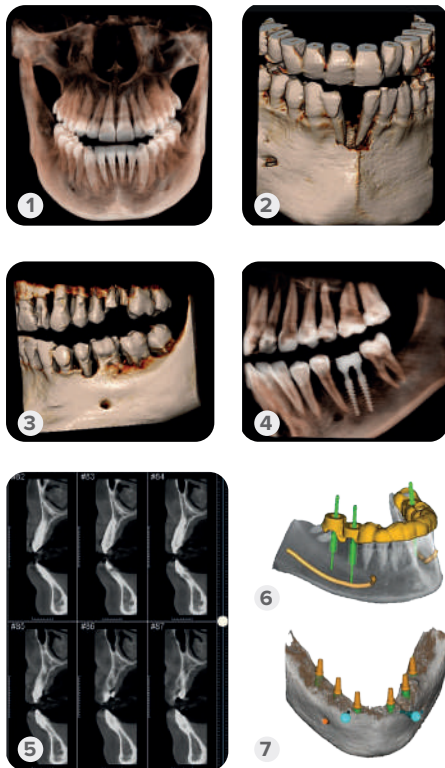




# DURAY® 3D

## Extraoral X-ray Series

Duray® 3D is a complete, compact, and fully upgradable 3D CBCT Panoramic and Cephalometric system. It covers a gamut of applications - such as endodontics, periodontology, surgery, implantology, and orthodontics - providing everything you need for your daily practice. It's a flexible solution that can be upgraded to one-shot cephalometry any time.



- Touchscreen Next To Patient
- Quick Cephalometrics
- Instantly Upgradeable
- Automatic Metal Artifact Reduction (AMAR)
- Automatic Noise Reduction (ANR)
- Advanced Technology
- Mirroring
- Smart Backlight
- Safe & Easy
- Plug & Play
- Quick Positioning



1. 10x10 hd for a full mouth evaluation.
2. 5x6,5 hd small volume for endodontic and periodontic evaluations.
3. 7x6,5 volumes for local.
4. Evaluations of periodontal diseases or implants osteointegration checks.
5. Cross sections – evaluation of the cortical bone.
6. Example of multiple implant planning.
7. Examples of single and multiple implant planning.

### Duray 3D Pan

#14190

Reg. \$76,850

Introductory Special:

**\$59,682**

### Duray 3D Ceph

#14193

Reg. \$91,350

Introductory Special:

**\$76,734**

\*The price does not include base plate. \* Installation is subject to local regulations. \*Only installed on 6 compatible computers.

All offers will require a proof of purchase dated from January 1 to March 31, 2026 and must be reflected on one invoice. Offers must be redeemed no later than April 15, 2026. Please allow 4 to 8 weeks for promotion to be processed. All brands are holders of their respective trademarks.



# DURAY<sup>®</sup>

## Imaging Plate Scanner

Duray Image Plate Scanner enables fast and efficient image processing with outstanding image quality in just seconds to meet diagnostic needs.

Say goodbye to the hazardous and costly traditional intraoral x-rays. Converting to digital imaging can be this simple.



### ■ Powerful Processing

With an 8-core CPU and developed with advanced 14 nm LPC FinFET process technology, FPGA as a coprocessor, brings superior processing that is smoother and faster for instant and reliable diagnoses.



### ■ Smart Design

The 7-inch large touch screen offers a resolution of 800 x 1280 pixels and features an intuitive operational design as a 1-click system from standby to scanning and image viewing. The resulting images are ultra-high resolution with clear details and excellent contrast.



### ■ Compact Tabletop Design

With a footprint of only 0.13 square meters, Duray imaging plate scanner is a powerful solution for clinics of all sizes. Its compact size allows it to be set up for direct use chairside for efficient workflow.

### ■ Comfortable

Choose from 4 plate sizes of 0-3 to select the best fit for your patient's needs. Phosphor plates are soft and flexible to assure patient comfort and re-usable a countless number of times to maximize your investment.



(20229) Duray DC1  
Reg. \$9,228.65

**BONUS**

**+ \$500 ATOP CREDIT**

(Credit applicable on next order.)



\*Credit card payments please add 3% processing fee. All offers will require a proof of purchase dated from January 1 to March 31, 2026 and must be reflected on one invoice. Offers must be redeemed no later than April 15, 2026. Please allow 4 to 8 weeks for promotion to be processed. All brands are holders of their respective trademarks.



### I-Max & I-Max Ceph

- Lightweight : 120 kg/264lbs
- 24 2D programs including complete volume & condyles
- 9 cephalometric programs including low dose programs
- Quick installation and very easy to handle
- User-friendly interface
- Face to face patient positioning

*\*Installation is not included*



Wall Mount



(17073) I-Max

Reg: \$29,999

(20017) I-Max Ceph

Reg: \$49,800

**Please call for our promotions! 1-416-293-2868**



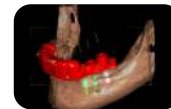
### I-Max 3D & I-Max Ceph 3D

- Lightweight : 66kg/ 145 lbs for the wall-mounted 3D version and 125kg/275lbs for 3D cephalometric version
- 18 3D programmes including complete volume & condyles and airways
- Quick installation and very easy to handle
- User-friendly interface
- Face to face patient positioning
- Scan of 3D models

*\*Installation is not included*



Wall Mount



(19444) I-Max 3D

Reg: \$84,900

(20228) I-Max Ceph 3D

Reg: \$98,880

**Please call for our promotions! 1-416-293-2868**



## Annual Harp Test

We now offer annual HARP Testing Service.

We can help keep your office in compliance with the H.A.R.P Act.

**Contact us for more info**

**416-293-2868**



### Atop® 75

Ultrasonic Cleaner

- Large tank capacity of 2 gal./7.5 L
- External water draining connector
- Digital control, Digital Display, 1 to 30-minute full range timer
- 3 industrial grade ultrasonic transducers
- Heater with 5 temperature settings
- Unit Size: 7.75"x11"

Reg: \$1,450

**Sale: \$1,280**

**New**



(11176)



### Atop® 25

Ultrasonic Cleaner

- Large tank capacity of 2.5 litres
- Digital control, LED display, 5 timer settings
- Industrial grade ultrasonic transducer
- Heater preset at 65°C (149°F)
- Unit Size: 11.4" x 8.8" x 7.3"

Reg: \$399.95

**Sale: \$225**



(10852)



## USB Direct Intra-oral Sensor

- Atraumatic & ergonomic
- Simple & automatic
- High-definition & precision
- Fully adapted to all your clinical practices
- Reliable & robust
- 2 Year Warranty

(13962) Opteo Digital Sensor Package

### Includes:

Size 1 Sensor x 1  
Size 2 Sensor x 1  
Size 2 Positioning kit x 1  
Imaging software Single x 1

Reg: \$13,000

**Sale: \$9,800**



## Digital Phosphor Plates

- Reusable
- Compatible with Gendex\* Air Technique\*, Kodak\*

(10848) Size 0

(10849) Size 1

(10850) Size 2

(10851) Size 3



Reg: \$229.95

**Sale: \$199<sup>25</sup>**

**4pcs/box: \$49<sup>81</sup>/pc**

(18404) Phosphor Plate Storage Box

Reg: \$99

**Sale: \$89**

(18403) PSP Cleaning Plates, 12Pcs/Bag

Reg: \$49

**Sale: \$42<sup>95</sup>**

Clear Plastic Carrier, 30Pcs/Bag

(19744) Size # 0 (19743) Size # 1 (19742) Size # 2

Reg: \$99.95

**Sale: \$79<sup>95</sup>**



Atop\*

## Autoclavable X-ray Film Holders

(10684) Light Beige (10683) Blue

Reg: \$6.95

**Sale: \$5<sup>95</sup>**



Atop\*

## X-Ray Positioning Kit

(14937)

Reg: \$149.95

**Sale: \$109<sup>95</sup>**



## Digital Sensor Positioning Kits

Kit for a complete FMX

- 3 different holders
- 1 Aiming ring
- 1 Bite block



The Positioning Kits are compatible with:

Apixia, Air Techniques, Belmont, Camsight, Centaur, Digitales, Dentalmind Dentimax, E2V, Fimet, Fona, Gendex, Gray Faclon Instrumentarium, Kodak, Kavov, Mediadent, Myray, Owandy, Planmeca, Progeny, Suni, Schick, Sirona, Sota, Soredex, Sopro, Sigma, Toshiba, Trophy, Visiodent, Vatech, Villa Radiology Systems, XDR

(18455) Size #2

Reg: \$299

**Sale: \$277<sup>38</sup>**



Blue

Red

Yellow



## X-Ray Aprons

Material: Top side nylon, bottom side microfiber polyester

### Lead

### Code

### Reg.

Adult Bib Apron w/ collar	(75051)	\$329.99
Thyroid Collar (For Adult Bib Apron)	(75056)	\$87.99
Child-size Bib Apron w/ collar	(75053)	\$257.99
Adult panoramic apron X-ray Apron	(75061)	\$374.99
Child-size panoramic apron	(75062)	\$277.99

### Lead-Free

### Code

### Reg.

Adult Bib Apron w/ collar	(75051NL)	\$545.99
Adult Bib Apron wo/ collar	(75050NL)	\$458.99
Thyroid Collar (For Adult Bib Apron)	(75056NL)	\$95.99
Child-size Bib Apron w/ collar	(75053NL)	\$417.99
Adult panoramic apron	(75061NL)	\$715.99
Child panoramic apron	(75062NL)	\$554.99

\*Final Sale. No Exchange/Returns.

## BM-2000/2100/2200

(10969) 2X4L Dev. & 2X4L Fix.

Reg: \$147.50

**Sale: \$118**

(10970) 1X4L Developer

(10971) 1X4L Fixer

Reg: \$39.95

**Sale: \$30<sup>99</sup>**





## BM-3000

(10977) 3X1L of each  
Developer & Fixer

Reg. \$98.95



Kodak\*

## X-Ray Films

(13582) IP-21, Insight E-Speed, Super Polysoft (150), Size 2

Reg. \$219.99

**Sale: \$199**

(13580) DF54 #0 Poly 100-1 Film Packets

Reg. \$169.95

**Sale: \$149<sup>95</sup>**

(13604) DF58 #2 Poly 150-1 Film Packets

Reg. \$199.95

**Sale: \$169<sup>95</sup>**



Kodak\*

## Digital X-Ray Sensor Sleeves

Paper Covered, 500Pcs/Box

Reg. \$109.95

**Sale: \$79<sup>95</sup> Net: \$15<sup>99</sup>/100pcs**



10810 Size 0  
(Kodak 6100)



10811 Size 1  
(Kodak 6100)



10812 Size 2  
(Kodak 6100)



10804 Size 2  
(Sirona)



10805 Size 1  
(Sirona)



10802 Size 1  
(Schick)



10803 Size 2  
(Schick)



10801 Size 2  
(Suni/Lightyear)



10745 Size 1  
(Gendex, XDR)



10746 Size 2  
(Gendex, XDR)



Flow Dental\*

## Flo X-Ray

(12924) DV-58, Econo Pak, 600 Films/Box

Reg. \$404.99



Mark3\*

## Bite Wing Tabs

(14957) Self Adh, 500Pcs/Box

Reg. \$16.99



**Beyes**

| Dental Chair Accessories



## X1 Premium Doctor's Stool

Sewn:

- (14344) Burgundy
- (14290) Cobalt Blue
- (14291) Carbon Black
- (14292) Espresso Brown
- (14293) Sky Blue
- (14294) Mustard Yellow
- (14295) Olive Green
- (14298) Off-White
- (14299) Medium Grey



Burgundy Cobalt Blue Carbon Black Espresso Brown Sky Blue



Mustard Yellow Olive Green Off-white Medium grey



Reg: \$1228.45

**Sale: \$998**

## Premium Assistant Stool

Sewn, Arm Support, Adjustable height for feet:

- (20402) Burgundy
- (20403) Cobalt Blue
- (20404) Carbon Black
- (20299) Espresso Brown
- (20405) Sky Blue
- (20407) Olive Green
- (20408) Off-White
- (20409) Medium Grey



Burgundy Cobalt Blue Carbon Black Espresso Brown



Sky Blue Olive Green Off-white Medium grey



Reg: \$1,419.55

**Sale: \$1,280**



## TRAY-VAC Vacuum Former

- Light weight design
- Features quick lock frame
- Individual heat and vacuum controls

(11082) Reg: \$899.95 **Sale: \$799**



## X35 Micro Motor

- Improved Classic 0-35,000 RPM
- High Torque System

(11070) Reg: \$1,499 **Sale: \$1,450<sup>95</sup>**



## Dynamic Duo

- Heavy duty V-35 Micromotor
- 35K RPM High Torque System
- Buffalo Dynamic Duo V-35/ Thermo-Knife Combo Unit Complete

(11071) Reg: \$1,399.95 **Sale: \$1,360<sup>95</sup>**



## DualTrimTM

High Performance Rotary Dry Model, Trimming Machine

(11077) 1/2 HP, 10" Diameter, 120V AC

Reg: \$1,598 **Sale: \$1,904**



## Vibrator #1A

- High Power, 3 speed, heavy duty
- Model with 4" diameter rubber platform.

(11087) Reg: \$250 **Sale: \$230<sup>95</sup>**



## Thermaknife

(11083) Intro Kit Contains: Unit and knife edge pen

Reg: \$530.99 **Sale: \$487<sup>99</sup>**



## Soft Eva

For bleaching, Soft, clear EVA, 5% $\times$ 5% sheets

(11078) 0.040, 12Pcs/box

Reg: \$29.95 **Sale: \$24<sup>95</sup>**



(11079) 0.040, 100Pcs/box

Reg: \$129.95 **Sale: \$108<sup>95</sup>**

## UV-MT Model Trimmer

Ultra-Violet Model Trimmer Kills Germs While it turns!

(17035) 1/3 HP, 10" Diameter, 120V AC

Reg: \$1,998 **Sale: \$1,799<sup>95</sup>**



## PrepStart

- PrepStart with foot pedal
- Installation Kit
- Handpiece & Nozzle Kit
- Instructions & Technique Manual
- 1lb Aluminum Oxide 27
- 1 year warranty

(17024) Air Abrasion System

Reg: \$5,834.40



## MicroEtcher ERC-Laboratory

- Porcelain repair & Maryland Bridge repair.
- Etch all metals, composites, acrylics, porcelain & remove cement.
- Orthodontics - etch all bands & brackets. Remove cement.

(18791) MicroEtcher ERC Handpiece

Reg: \$476 **Sale: \$451<sup>99</sup>**

(18794) MicroEtcher ERC Nozzle

Reg: \$142.99



QUARTER  
SPECIALS

**2026-Q1**

01/01/2026 - 03/31/2026

## MicroEtcher IIA

- Etch all metals, composites & amalgams for maximum bond strength
- Intraoral porcelain repair
- Pit & fissure prep
- Clean darkened grooves to reveal decay
- Prep incipient lesions and minor Class I & V
- Debride bur preps for best esthetics & bonds

(11831) Sandblaster

Reg: \$714 **Sale: \$677<sup>99</sup>**



## Interchangeable Nozzle (for the Microetcher II and IIA)

(18787) .048 Tip 60 deg. Slim Profile

Reg: \$173.99

(18790) .032 Pit & Fissure Tip 60 deg.

Reg: \$173.99





Base  
VAC



## Elite Series Rocky Oilless Air Compressor

Code	Users	Reg.	Sale
(14520)	2-3	\$13,700	\$11,599
(14525)	5-7	\$20,960	\$17,699

\*Credit card payments please add 3% processing fee.



## Goldenvac Stainless Steel Wet Vacuum Pump

- Investment cast stainless steel impeller and stainless steel housing with stainless steel base plate and manifold.
- Maximum durability to prevent wear from air abrasion and ceramic particles or hard water conditions.

Code	Users	Reg.	Sale
(14511)	3	\$6,410	\$5,399
(14513)	5	\$7,920	\$6,699
(14515)	6	\$13,450	\$11,399
(14532)	10	\$15,990	\$13,499

### Tech-West's Exclusive Warranty:

- 10 years on all stainless steel components
- 5 years on the motor shaft
- 3 years on all other components

\*Credit card payments please add 3% processing fee.



## Eco-Vac Dry Vacuum

Our EcoVac system provides the advantages of proven technology, durable construction, quiet operation and oil-free performance with the latest in water and energy-saving features.

Code	Users	Reg.	Sale
(14540)	2-3	\$20,850	\$17,699
(14543)	4-6	\$38,100	\$32,099
(14544)	5-7	\$23,300	\$19,599
(14539)	10-14	\$43,550	\$36,679

\*Credit card payments please add 3% processing fee.



Beyes



## DuraMax Oilless Compressor

Code	Model	Users	Reg.
(18711)	C5	3	\$12,000
(18712)	D6	4-6	\$19,600

\*Credit card payments please add 3% processing fee.



## Air Compressors & Vacuums

BaseVac is the only Canadian manufacturer of Dental mechanical room equipment. Trusted by major Canadian dental institutions like the University of Toronto, University of British Columbia, George Brown College, and Durham College.

**Please call for quote and more details !**



CROSSTEX  
A DENTAL MEDICAL COMPANY

## Syclone Amalgam Separators

**1.5x larger canister capacity.**

(19615) Amalgam Separator System **\$1,298.95**

(19616) Replacement Canister Without Recyle Kit **\$499**



Solmetex

## Hg5 Amalgam Separators

(14368) Solmetex Hg5 System  
Accommodates up to 10 operatories

- 30" h x 11" w x 8" d
- 1 1/2" inlet & outlet piping
- Fernco® couplers
- Floor/Wall mount bracket
- Services 1-10 chairs

(14373) Solmetex Hg5 System Mini  
Accommodates up to 4 operatories

- 25" h x 11" w x 8" d
- 3/4" inlet & outlet piping
- Fernco® couplers
- Floor/Wall mount bracket
- Services 1-4 chairs

**Buy 1 Hg5 (14368) or (14373)  
Get 1 case (4 [64oz] bottles) of  
PowerScrub™ Vacuum Line  
Cleaner (PCS-VLCK) Free!**



**Reg: \$1,699.95**

(14186) Replacement cartridge with Recycling... Disposal Pamphlet (NXT)\*

(14369) Replacement cartridge with Recycling Disposal Pamphlet(CC)\*

**Reg: \$660**

\*Please check the replacement style before ordering.





# Atop® Experience the AAA+

- Access to free shipping
- Access to member exclusive discounts
- Access to exclusive specials

\*Terms and conditions apply, please check atopdent.ca for more info.

Your price: **\$99** per year\*



## Saliva Ejectors

Disposable Saliva Ejectors with Affixed Tips, Latex Free, 1000Pcs/Case

(18879) Clear w/ Blue Tips  
(18880) White w/ White Tips

Reg. \$45.95

**3+ @ \$42<sup>95</sup> Member: \$39<sup>95</sup>**



Made in Italy

## Surgical Aspirator Tips

25Pcs/Pack

(10611) Large, Green, 1/4"  
(10610) Standard, White, 1/8"  
(10609) Small, Blue, 1/16"

Reg. \$8.99

**6+ @ \$7<sup>99</sup> Member: \$7<sup>56</sup>**



## High Volume Evacuator Tips

100Pcs/Bag, 10Bags/Case

(19814) Vented, White

Reg. \$49.99

**Sale: \$39<sup>99</sup> Member: \$33<sup>95</sup>**



**Lowest Price!**

## Mixing Tips Standard

50Pcs/Pack

(10770) Green, For Impression Material  
(10771) Pink, For Impression Material  
(10769) Yellow, For Impression Material

Reg. \$29.99

**6+ @ \$23<sup>95</sup> Member: \$20<sup>95</sup>**



## Euvac Suction Tips

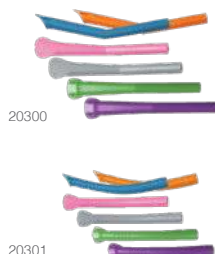
12Pcs/Bag, Color: Blue, Green, Pink, Gray, Purple, Orange, Assorted

(20300) Universal Suction Tips

(20301) Child Suction Tips

Reg. \$9.95

**Sale: \$8<sup>99</sup>**



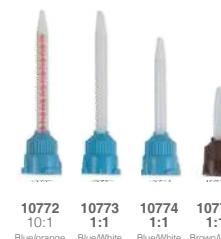
## Mixing Tips Fine

25Pcs/Pack

(10772) Blue/Orange, For Temporary Crown Material  
(10773) Blue/White, Long, For Cement  
(10774) Blue/White, Short, For Cement  
(10775) Brown/White, Short, For Cement

Reg. \$29.99

**6+ @ \$22<sup>95</sup> Member: \$19<sup>95</sup>**



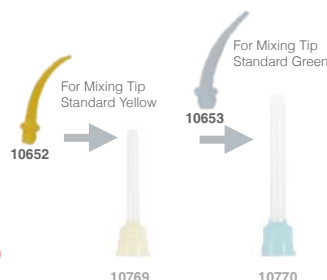
## Intra Oral Tips

100Pcs/Pack

(10652) Yellow (10653) Clear

Reg. \$29.99

**3+ @ \$23<sup>95</sup> Member: \$17<sup>99</sup>**



## Mixing Tips

25Pcs/Pack

(19321) Brown/Black, Short, For Resin  
(10776) Brown/White, Short, For Core  
(10777) Brown/White with Intraoral Tips, For Endo

Reg. \$29.99

**Member: \$25<sup>95</sup>**







Free \$20 to \$500 Gift Card with purchase! Promotional products are qualified!  
Please see P2 for more information.

## Autoclavable Syringe Tips

(10676)

Reg. \$4.99

20+ @ \$4<sup>25</sup> Member: \$3<sup>99</sup>



## Saliva Ejector Tips

(12144) Tips, Autoclavable grey, 1pc/pk  
(14950) Tips, Autoclavable black, 1pc/pk

Reg. \$6.99

10+ @ \$5<sup>75</sup> Member: \$4<sup>99</sup>



## Dental Bibs

500Pcs/Case

(18877) Blue (18878) Lavender

Reg. \$39.95

Sale: \$26<sup>99</sup> Member: \$24<sup>99</sup>



## Sterilization Indicator Tape

(19967) 3/4", 60yards/roll Reg. \$6.99

(19968) 1", 60yards/roll Reg. \$10.99



## Impression Material VPS

4x50ml Cartridges/Pack

(18488) Light Body, Regular Set  
(18489) Heavy Body, Regular Set  
(18490) Light Body, Fast Set  
(18491) Heavy Body, Fast Set  
(18492) Bite Registration, Fast Set  
(19753) Medium Body, Regular Set

Reg. \$52.95

Sale: \$49<sup>95</sup> Member: \$47<sup>95</sup>



## Disposable Prophy Angle

100pcs/Box

(19054) 90 Degree Firm  
(19053) 90 Degree Soft

Reg. \$60

5+ @ \$42<sup>99</sup> Member: \$39<sup>99</sup>



## Easy Prophy Cup

(14063) Snap-on Regular, Latex-Free, 100Pcs/Box  
(18022) Snap-on Soft, Latex-Free, 100Pcs/Box

Reg. \$12.95

5+ @ \$10<sup>99</sup> Member: \$9<sup>50</sup>



(14956) Cups Screw-on, Regular, Latex-Free, 100pcs/Box  
(14066) Cups Screw-on, Soft, Latex-Free, 100pcs/Box

Reg. \$32.90

5+ @ \$29<sup>90</sup> Member: \$22<sup>95</sup>



(14067) Latch type Regular, Latex-Free, 100pcs/Box  
(14068) Latch type Soft, Latex-Free, 100pcs/Box

Reg. \$30.95

5+ @ \$27<sup>95</sup> Member: \$23<sup>95</sup>



## Mandrels

Fit with 3M\* Sof-Lex

(10714) 3Pcs/Pack, 1398RA

Reg. \$25.99

3+ @ \$21<sup>99</sup> Member: \$19<sup>79</sup>



## Dispensing Gun

(10725) For HP Cartridges, 1:1/2:1

(10726) For Crown & Bridge  
Material, 4:1/10:1

Reg. \$59.99

2+ @ \$49<sup>99</sup> Member: \$44<sup>99</sup>



10725



10726

## Composite Dispenser Gun

(12150)

Reg. \$39.99

2+1 FREE Member: \$26<sup>59</sup>



## Cotton Tipped Applicators

1000Pcs/Box

(12092) 3" Reg. \$9.95

Sale \$7<sup>99</sup>

(12093) 6" Reg. \$12.95

Sale \$9<sup>25</sup>



## Ultrasonic / Enzymatic Tablets

- Ultrasonic Cleaning Solution
- Instrument Pre-Soak
- Evacuation Cleaner

(19432) Dual Enzyme, Anti-Corrosion Formula, Fresh Mint Scent

64/box, 1 tablet makes 0.5 Gallon/2L

Reg. \$49.00

**Sale: \$45<sup>95</sup> Member: \$42<sup>95</sup>**

Made in USA



## Dispensing Tips

100Pcs/Pack

- (10647) 18Ga. Pink, Cavity Liner & Bases & Composites  
 (10648) 20Ga. Yellow, Composites & Sealants  
 (10649) 22Ga. Gray, Sealants & Etchants & Cements  
 (10650) 20Ga. Black, Composites & Cements  
 (10651) 25Ga. Blue, Etchants



Reg. \$14.99

**5+ @ \$12<sup>99</sup> Member: \$11<sup>69</sup>**

## Micro Applicators

100Pcs/Bottle

- (12091) 1 Cylinder  
 (12090) 2 Super Fine  
 (12089) 3 Fine  
 (12088) 4 Regular



Reg. \$7.99

**4+ @ \$6<sup>99</sup> Member: \$6<sup>29</sup>**

## Dappen Dishes

200Pcs/Pack

- (14966) Blue (10607) White  
 (10605) Green (10606) Lavender  
 (10608) Yellow



Reg. \$13.99

**4+ @ \$11<sup>99</sup> Member: \$10<sup>79</sup>**

## Disposable Prophy Paste Rings

200Pcs/Pack

(10613) Color Assorted 5 x 40

Reg. \$18.99

**Member: \$13<sup>99</sup>**



## Disposable Mixing Wells

(18021) 2-Well, 500Pcs/Box

Reg. \$38.99

**4+ @ \$29<sup>99</sup> Member: \$26<sup>99</sup>**



## Flexible Mixing Bowls

(10778) Small 4.5"x H3"

Reg. \$10.99

**2+ @ \$8<sup>49</sup> Member: \$7<sup>99</sup>**



(10779) Medium 5"x H3

Reg. \$11.99

**2+ @ \$9<sup>49</sup> Member: \$8<sup>99</sup>**



## Saliva Ejector Basket

(11690) 10pcs/pk

Reg. \$6.99

**Member: \$5<sup>99</sup>**



## Autoclavable Aluminum-Bur Block

(10644) 27-Bur Block, 18FG+9RA Hole, Blue

Reg. \$49.99

**1+1 FREE = \$24<sup>95</sup>/ea**



10644

(10642) 30-Bur Block, 20FG-10RA Hole, Blue

Reg. \$49.99/ea

**1+1 FREE = \$24<sup>95</sup>/ea**



10642

(10626) Blue Bur block (15 FG Hole)

Reg. \$26.95/ea



10626

## Autoclavable Plastic-Bur Block

(10715) Light Beige, 8FG+4RA Hole

(10716) Light Blue, 8FG+4RA Hole

(10742) Light Beige, 12FG Hole

(10743) Light Blue, 12FG Hole

Reg. \$12.65

**4+1 FREE = \$10<sup>12</sup>/ea**



10715



10716



10742



10743



Free \$20 to \$500 Gift Card with purchase! Promotional products are qualified!  
Please see P2 for more information.

Atop Brands

# BEST SELLERS

## TOP 10 ATOP PICKS

Q1  
26



### Saliva Ejectors

1000pcs/case

See **P40** for details



### Micro Applicators

100Pcs/Bottle

See **P42** for details



### Mixing Tips Standard

50Pcs/Pack

See **P40** for details



### Dental Bibs

500Pcs/Case

See **P41** for details



### Impression Material VPS

4x50ml/pack

See **P41** for details



### Diamond Burs FG

10pc/pack

See **P49** for details



### Non-Woven Gauze

5000Pcs/Case

See **P45** for details



### CI5-P1

200/pack

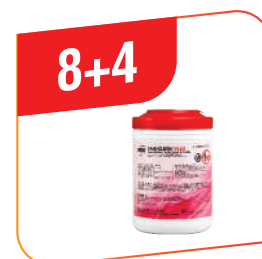
See **P27** for details



### Sterilization Pouch

class 4, 200pcs/box

See **P45** for details



### Sani-Cloth Plus

160 Sheets/Can

See **P10** for details

## Ergonomic Spatulas

(12114) Standard, 7 1/4",  
random color

Reg- \$12.99

**Sale: \$12<sup>95</sup>/ea**



## Curved Tips Syringes 412

(10655) 12cc, 50Pcs/Box

Reg. \$28.99

**3+2 FREE = \$17<sup>39</sup>/ea**



## Aluminum Step Wedge

(19599) For X-Ray Unit

Reg. \$45.99

**3+ @ \$29<sup>99</sup>**

**Member: \$26<sup>99</sup>**



## Bouffant Caps

100 Pcs/Bag

(19997) Blue, One Size Fits All

Reg. \$39.95

**Sale: \$15<sup>99</sup>**



## Lip Retractor

2pcs/pk

(18312) Double Ended (18313) Large  
(18314) Medium (18315) Small

Reg. \$7.90

**10+ @ \$6<sup>90</sup> Member: \$6<sup>20</sup>**



(18312)



(18313)



(18314)



(18315)

## Fluoride Trays

Double Arch, 50Pcs/Pack

(10799) Small, Green  
(10798) Medium, Yellow  
(10797) Large, Blue

Reg. \$22.95

**Sale: \$19<sup>95</sup> Member: \$17<sup>95</sup>**



10799

10798

10797

## Prophy Brushes

	Reg.	Sale	Member
(10719) Snap-On Flat (144/pack)	\$32.95	\$29 <sup>95</sup>	\$29 <sup>75</sup>
(10721) Screw-In Flat (144/pack)	\$39.95	\$36 <sup>95</sup>	\$36 <sup>75</sup>
(10722) Screw-In Tapered (100/pack)	\$61.95	\$42 <sup>95</sup>	\$42 <sup>55</sup>

Latex Free

(10720) Snap-On Tapered (100/pack)	\$49.95	\$31 <sup>95</sup>	\$31 <sup>75</sup>
(10723) Latch Type Flat (100/pack)	\$45.95	\$29 <sup>95</sup>	\$29 <sup>75</sup>
(10724) Latch Type Tapered (100/pack)	\$61.95	\$42 <sup>95</sup>	\$42 <sup>55</sup>



10719



10720



10721



10722



10723



10724

## Mouth Props

Autoclavable, 2Pcs/Box

(19724) Pedo (19725) Child (19726) Adult

Reg. \$23.90

**Sale: \$16<sup>95</sup> Member: \$15<sup>95</sup>**



**Lowest Price!**

## Mouth Props (DCI)

Non-Latex, Autoclavable, 2Pcs/Box

(11661) Small Pedo (11662) Child (11663) Adult

Reg. \$79.95

**Sale: \$59<sup>95</sup> Member: \$57<sup>95</sup>**



## Mirror Heads

(12242) #4 (12244) #5

Reg. \$3.99

**12+ @ \$2<sup>99</sup> Member: \$2<sup>69</sup>**



## Mirror Handle

(12241)

Reg. \$13.95

**5+ @ \$10<sup>99</sup> Member: \$10<sup>29</sup>**



## Mosquito Forcep

(18197)

Reg. \$45.90

**2+ @ \$37<sup>90</sup> Member: \$34<sup>10</sup>**



## Mathieu

(18196)

Reg. \$57.60

**2+ @ \$43<sup>95</sup> Member: \$39<sup>56</sup>**



## College Pliers Standard Tips Serrated

(13315)

Reg. \$8.99

**4+ @ \$6<sup>99</sup> Member: \$6<sup>29</sup>**



## Intraoral Camera Sleeves

(10686) Poly Plastic, 500Pcs/Pack

Reg. \$35.95

**4+ @ \$21<sup>99</sup> Member: \$19<sup>99</sup>**



## Curing Light Sleeves

(10672) Covers Handle Only, 500Pcs/Box

Reg. \$57.95

**4+ @ \$45<sup>95</sup> Member: \$42<sup>95</sup>**



(10673) Covers Tip to Handle, 500Pcs/Box

Reg. \$79.95

**4+ @ \$62<sup>99</sup> Member: \$57<sup>99</sup>**





Free \$20 to \$500 Gift Card with purchase! Promotional products are qualified!  
Please see P2 for more information.

Atop Exclusive Promo

# ATOP EXCLUSIVE PROMOTION



## Barrier Film

4" x 6", 1200 Sheets/Roll

(10619) Blue (10620) Clear

Reg. \$25.95

Member: **\$23<sup>95</sup>**

4+1  
FREE



## Autoclavable Plastic Trays

Standard Flat, 13.5"x9.75"

(10841) Light Blue  
(10843) White  
(10842) Light Beige

4+1  
FREE



Sale: **\$9<sup>95</sup>**

Member: **\$8<sup>99</sup>**

## Disposable Air Water Syringe Tips

(10618) Assorted, 250Pcs/Pack

Reg. \$34.95

Member: **\$25<sup>95</sup>**

4+2  
FREE



## PSP Barrier Envelopes

For Digital Phosphor Storage Plate

(10712) 100pcs/Box, No. 0  
(10709) 100pcs/Box, No. 1  
(10713) 100pcs/Box, No. 2  
(10710) 50pcs/Box, No. 3  
(10711) 50pcs/Box, No. 4

Reg. \$23.95

Member: **\$20<sup>95</sup>**

8+4  
FREE



## Sterilization Pouch

Class 4, 200Pcs/Box

	Sale	Member
(19960) 2.25x4"	<b>\$6<sup>50</sup></b>	<b>\$5<sup>95</sup></b>
(19961) 2.75x9"	<b>\$9<sup>95</sup></b>	<b>\$8<sup>95</sup></b>
(19962) 3.5x5.25"	<b>\$9<sup>75</sup></b>	<b>\$8<sup>75</sup></b>
(19963) 3.5x9"	<b>\$10<sup>95</sup></b>	<b>\$9<sup>50</sup></b>
(19964) 5.25x10"	<b>\$15<sup>50</sup></b>	<b>\$13<sup>90</sup></b>

4+2  
FREE



## Non-Woven Gauze

5000Pcs/Case

(19813) 2"x2", 25 sleeves

Reg. \$39.95

Sale: **\$32<sup>99</sup>** Member: **\$27<sup>99</sup>**

3+1  
FREE



## Autoclavable Napkin Holders

(10659) Light Blue	(10656) Dark Blue
(10657) Green	(10661) Red
(10662) White	(10660) Pink
(10658) Lavender	(10663) Yellow

4+1  
FREE



Reg. \$7.59

Member: **\$4<sup>99</sup>**

## 3-In-1 Tray

(10814) Posterior, Green, 36Pcs/Pack  
(10815) Quadrant, Yellow, 36Pcs/Pack  
(10816) Sideless, White, 36Pcs/Pack  
(10817) Anterior, Lavender, 36Pcs/Pack  
(10818) Full Arch, Blue, 24Pcs/Pack

4+1  
FREE



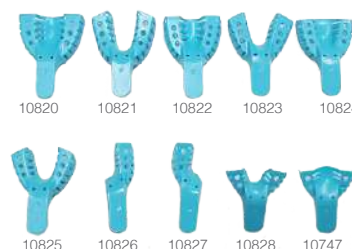
Sale: **\$49<sup>95</sup>**

## Disposable Impression Trays

10Pcs/Pack

(10820) No.1 Upper Large  
(10821) No.2 Lower Large  
(10822) No.3 Upper Medium  
(10823) No.4 Lower Medium  
(10824) No.5 Upper Small  
(10825) No.6 Lower Small  
(10826) No.7 Quadrant  
(10827) No.8 Quadrant  
(10747) No.10 Upper Anterior  
(10828) No.9 Lower Anterior  
(10819) Assorted

4+1  
FREE



Sale: **\$12<sup>95</sup>**



## Standard Articulating Paper Forcep

(12220)

Reg. \$11.99

**Member: \$8<sup>99</sup>**

4+1  
FREE



## Canaview Intraoral Camera Sleeves

(10708) With paper cover, 100Pcs/Pack

Reg. \$110.45

**Member: \$95**

4+1  
FREE



## Self Locking College Pliers

(13325)

Reg. \$9.99

**Member: \$7<sup>19</sup>**

4+1  
FREE



## Peel-N-Stick Light Guide Sleeves

Dia. Light Guides , 200Pcs/Pack

(10687) Small, Fits 7-8mm

(10688) Large, Fits 9-11mm

Reg. \$21.95

**Member: \$12<sup>99</sup>**

4+1  
FREE



## Tray Sleeves

(10670) 10.5"x 14", 500Pcs/Pack

Reg. \$39.95

**Member: \$36<sup>95</sup>**

4+1  
FREE



## Pre-Cut Syringe/HVE Sleeves

Pre-Cut 10"x2.5", 500Pcs/Box

(10668) Blue

(10669) Clear

Reg. \$25.95

**Member: \$16<sup>99</sup>**

4+1  
FREE



## Pen Type Curing Light Sleeves

(10685) 500Pcs/Box

Reg. \$36.95

**Member: \$25<sup>95</sup>**

4+1  
FREE



## X-Ray Sensor Sleeves

500Pcs/Pack

(10704) Large, 60mm x 200mm

(10705) Medium, 42mm x 200mm

(10706) Small, 35x200mm

(10707) X Small, 38x200mm

Reg. \$25.95

**Member: \$16<sup>99</sup>**

4+1  
FREE



## Chair Sleeves

(10675) Full Chair Sleeves, 81"x29.5", 202X72.5cm, 125Pcs/Pack

Reg. \$89.95

**Member: \$85<sup>95</sup>**

4+1  
FREE



(10677) Half Chair/Stool Sleeves, 27 1/2"x24", 225Pcs/Pack

Reg. \$79.95

**Member: \$75<sup>95</sup>**

## T-Style Light Handle Sleeves

(10674) 500Pcs/Box

Reg. \$29.95

**Member: \$24<sup>95</sup>**

4+1  
FREE



# Fineese Gloves **GIVEAWAY**

All purchases **above \$300** (before shipping and taxes)  
submitted through Atop Dental between January 1- March 31, 2026  
will qualify for



**Atop Fineese Gloves Giveaway** ➡

- ▶ On purchases between \$300 and up
- ▶ customer'll get **1 FREE BOX OF FINEESE GLOVES**

\*Maximum 1 box of gloves can be given away per order, per location. While quantities last. Order cannot be combines.





Free \$20 to \$500 Gift Card with purchase! Promotional products are qualified!  
Please see P2 for more information.

## Metal Brackets

Reg. \$23.90

10+ @ **\$19<sup>90</sup>** Member: **\$17<sup>90</sup>**



20pcs/kit	Roth		MBT	
	0.18	0.22	0.18	0.22
without hook, mesh base	(18207)	(18213)	(18210)	(18216)
3 with hook, mesh base	(18208)	(18214)	(18211)	(18217)
345 with hook, mesh base	(18209)	(18215)	(18212)	(18218)

## Ceramic Brackets

Reg. \$33.90

10+ @ **\$29<sup>90</sup>** Member: **\$26<sup>90</sup>**



20pcs/kit	Roth		MBT	
	0.18	0.22	0.18	0.22
without hook, mesh base	(18219)	(18225)	(18222)	(18228)
3 with hook, mesh base	(18220)	(18226)	(18223)	(18229)
345 with hook, mesh base	(18221)	(18227)	(18224)	(18230)

## Metal Self-Ligating Brackets

Reg. \$99.90

10+ @ **\$89<sup>90</sup>** Member: **\$80<sup>90</sup>**

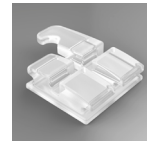


20pcs/kit	Roth		MBT	
	0.18	0.22	0.18	0.22
without hook, mesh base	(18244)	(18250)	(18247)	(18253)
3 with hook, mesh base	(18245)	(18251)	(18248)	(18254)
345 with hook, mesh base	(18246)	(18252)	(18249)	(18255)

## Monocrystalline Brackets

Reg. \$159.90

10+ @ **\$139<sup>90</sup>** Member: **\$125<sup>10</sup>**



20pcs/kit	Roth		MBT	
	0.18	0.22	0.18	0.22
without hook, mesh base	(18231)	(18237)	(18234)	(18240)
3 with hook, mesh base	(18232)	(18238)	(18235)	(18241)
345 with hook, mesh base	(18233)	(18239)	(18236)	(18242)

## Niti Wire-Rectangular

10pcs/pk	Upper	Lower
0.016"×0.016"	(18268)	(18277)
0.016"×0.022"	(18269)	(18278)
0.017"×0.022"	(18270)	(18279)
0.017"×0.025"	(18271)	(18280)
0.018"×0.018"	(18272)	(18281)
0.018"×0.022"	(18273)	(18282)
0.018"×0.025"	(18274)	(18283)
0.019"×0.025"	(18275)	(18284)
0.021"×0.025"	(18276)	(18285)



Reg. \$9.90

10+ @ **\$8<sup>90</sup>** Member: **\$8<sup>10</sup>**

## Stainless Steel Wires-Rectangular

10pcs/pk	Upper	Lower
0.016"×0.016"	(19135)	(19136)
0.016"×0.022"	(19137)	(19138)
0.017"×0.025"	(19141)	(19142)
0.018"×0.018"	(19143)	(19144)
0.018"×0.025"	(19147)	(19148)
0.019"×0.025"	(19149)	(19150)
0.021"×0.025"	(19151)	(19152)



Reg. \$12.90

10+ @ **\$11<sup>90</sup>** Member: **\$11<sup>10</sup>**

## Niti Wire-Round

10pcs/pk	Upper	Lower
0.012"	(18286)	(18291)
0.014"	(18287)	(18292)
0.016"	(18288)	(18293)
0.018"	(18289)	(18294)
0.020"	(18290)	(18295)



Reg. \$8.90

10+ @ **\$7<sup>90</sup>** Member: **\$7<sup>10</sup>**

## Stainless Steel Wires-Round

10pcs/pk	Upper	Lower
0.012"	(19153)	(19154)
0.014"	(19155)	(19156)
0.016"	(19157)	(19158)
0.018"	(19159)	(19160)
0.020"	(19161)	(19162)



Reg. \$11.90

10+ @ **\$10<sup>90</sup>** Member: **\$10<sup>10</sup>**



## MIM Single Tube

trumpeted opening

	0.18	0.22
1st Edgewise	(18256)	(18262)
1st Roth	(18257)	(18263)
1st MBT	(18258)	(18264)
2nd molar, Edgewise	(18259)	(18265)
2nd molar, Roth	(18260)	(18266)
2nd molar, MBT	(18261)	(18267)



4pcs/pk	Reg. \$7.90	Reg. \$9.90
	<b>10+ @ \$6<sup>90</sup></b>	<b>10+ @ \$8<sup>90</sup></b>

1 per Quadrant	<b>Member: \$6<sup>20</sup></b>	<b>Member: \$8<sup>10</sup></b>
----------------	---------------------------------	---------------------------------

## Metal Chain Stainless Steel Napkin Holder

(12084)

Reg. \$6.99

**5+ @ \$4<sup>99</sup>**

**Member: \$4<sup>25</sup>**



## Ease-o-tie

(19423) Mix-color, 36sticks/pk, 26pcs/stick, total 936pcs

Reg. \$13.99

**Member: \$12<sup>19</sup>**

**4+1  
FREE**



(19184)  
Blue



(19185)  
Sky Blue



(19186)  
Cyan



(19187)  
Black



(19188)  
Green



(19189)  
Metal Light Green



(19191)  
Grey



(19193)  
Red Orange



(19194)  
White



(19195)  
Clear



(19196)  
Silver



(19198)  
Golden



(19199)  
Light Yellow



(19200)  
Yellow



(19201)  
Metal Dark Purple



(19202)  
Purple



(19203)  
Indigo



(19204)  
Light Pink



(19205)  
Pink



(19206)  
Red



(19207)  
Burgundy



(19208)  
Raspberry



(19211)  
Transparent Red



(19212)  
Light Blue



(19213)  
Metal Light Blue



(19214)  
Dark Blue



(19215)  
Metal Purple



(19216)  
Orange



(19217)  
Metal Green



(19218)  
Light Green



(19219)  
Nacarar



(19607)  
Light Purple

## Standard Distal End Cutter T/C

(18508)

Reg. \$159.90

**2+ @ \$149<sup>90</sup> Member: \$134<sup>90</sup>**



## Hard Wire Cutter STR

(18198)

Reg. \$98.90

**2+ @ \$92<sup>90</sup> Member: \$83<sup>60</sup>**



## Crimpable Stops

(18301) Universal, Pkg of 10

Reg. \$5.90

**10+ @ \$4<sup>90</sup> Member: \$4<sup>40</sup>**



## Crimpable Hooks

Universal, Ball Top, Pkg of 10

(18296) 2.1mm	(18297) 2.7mm
(18298) 4.0mm	(18299) 5.5mm
(18300) 7.7mm	

Reg. \$5.90

**10+ @ \$4<sup>90</sup> Member: \$4<sup>40</sup>**



## Elastic

5000pcs/box

	3.5oz	4.5oz
1/8	(18302)	(18307)
3/16	(18303)	(18308)
1/4	(18304)	(18309)
5/16	(18305)	(18310)
3/8	(18306)	(18311)

Reg. \$59.95

**Sale: \$49<sup>95</sup> Member: \$38<sup>95</sup>**



## Teeth Guard Boxes

10Pcs/Pack

- (10748) Retainer Boxes
- (10749) Mouth Guard Boxes
- (10750) All Guard Boxes
- (10751) Denture Bath



Reg. \$13.90

**5+ @ \$12<sup>95</sup> Member: \$10<sup>99</sup>**





Free \$20 to \$500 Gift Card with purchase! Promotional products are qualified!  
Please see P2 for more information.

## Lab Burs

Superior quality lab burs that are coated with gold titanium Nitride, which allows for a smoother finish and faster cutting time while lasting up to 10 times longer than conventional carbide burs

**Carbide:** Reg: \$25.95

**Sale: \$19<sup>99</sup>** 3+ @ \$16<sup>98</sup>

**Gold:** Reg: \$29.95

**Sale: \$25<sup>95</sup>** 3+ @ \$24<sup>95</sup>

**Carbide:**  
**Gold:**



## Beyes

### Diamond Burs FG 10pc/pack

#### ROUND END TAPER



#### FLAT END TAPER



#### MODIFIED CHAMFER



#### FOOTBALL



#### EGG



#### NEEDLES



3+1  
FREE

#### ROUND



#### FLAT END CYLINDER



#### MODIFIED BEVELED CYLINDER



#### BARREL



**\$22<sup>89</sup>** Member: **\$20<sup>60</sup>** Atop Exclusive 3+1 FREE

SC: Super Coarse C: Coarse M: Medium F: Fine EF: Extra Fine

# Results Patients See

## Save on The Best in Practice Rotary Solutions

January 1 – March 31, 2026

**Promo Code 3540**

### Carbide Packs

## BUY 4, GET 1<sup>1</sup>

**Choose from:** Standard Operative Carbides, FG, FGSL, RA, RASL, HP, Great White®Gold, Trimming & Finishing, Fissurotomy®

**Specialty burs:** SmartBurs®II, Carbide Bulk Pack including: FG, RA, HP, Great White® Gold, Fissurotomy® and Trimming & Finishing Burs®

### SmartBurs®II Packs

## BUY 4, GET 1<sup>1</sup>

84% of patients preferred the use of an instrument without anesthesia<sup>2</sup>

**The Only Rotary Cutting Instruments that Discriminate Between Healthy and Carious Zones of Dentin.**



SmartBurs®II Instruments are made for use at standard slow handpiece speeds of 5,000 to 10,000 rpm

©2026 SS White® All Rights Reserved. SS White®, Great White®, Fissurotomy® and SmartBurs®II are registered trademarks of SS White Burs Inc. Market research and test studies available upon request. All offers are limited to stock on hand and are not valid on prior purchases. 1) Offers may not be combined with any other sale, promotion, discount, code, coupon and/or offer. Sales promotion choice must be indicated on invoice sent to SS White® on applicable order. SS White® reserves the right to discontinue a promotion at any time. To claim no charge goods: Mail a copy of your invoice by March 31, 2026 to: SS White Burs, Inc., Attn: Promotions Department, 1145 Towbin Ave., Lakewood, NJ 08701 or email freegoods@sswhitedental.com. Please note that these are end-user doctor promotions and must be redeemed by the qualifying practice. Please allow 4-6 weeks for free delivery. SS White® does its best to ensure that its photos/illustrations are as true to color as possible. However, due to inconsistencies of various monitors, lighting sources, digital photography, and manufacturing lot variations, SS White® cannot guarantee that the color that appears on your screen/printed material accurately portrays the true color of the received product. Images are intended as a guide only. Offer excludes Great White® Ultra, EndoGuide® Burs, Endo Safe End and Oral Surgery Burs. At no additional charge, equal or lesser value.

SS White Dental® is now a member of

**HuFriedyGroup**  
The Best In Practice

**SS White Dental® Burs**

\*More sizes are available, please call our office for more information.

**Promo Code 3540**

**BLADE FINISHING (5pk)** **Reg. \$91** **Sale: \$88<sup>59</sup>**

(15431) 7803 (15432) 7902 (15434) 7406 (15436) 7002 (15438) 7108 (15440) 7901 (15441) 7204 (15443) 7206 (15445) 7303 (15446) 7304 (15455) 7664  
(15461) 7801 (15462) 7802 (15465) CFT1 (15466) CFT2 (16848) 7003

**BUR BLOCK (1pk)**

(16761) FG Thermo (16762) RA/HP Thermo **Reg. \$19.99** (16763) Blue (16764) Red (16768) Black **Reg. \$60.99**

**FG (10pk)** **Reg. \$40.99** **4+1 Free** **Net: \$32<sup>79</sup>**

(15058) 33 1/2 (15060) 34 (15062) 35 (15069) 57 (15079) 332 (15080) 557 (15081) 956 (15082) 330 Long (15098) 57 Long (15099) 170 Long (15106) 331 Long  
(15110) 557 Short Shank (15113) 245 (15116) 257 (15118) 245 Short Shank (15119) 556 Short Shank (15120) 556 Long (15121) 244 (15123) 169 (15124) 169 Long  
(15129) 700 Long (15130) 702 (15132) 6 Short Shank (15133) 171 Short Shank (15139) 1156 Short Shank (15145) 1170 Long (15147) 1169 Long (15151) 4 Pear

**GOLD (10pk)** **Reg. \$74.99** **4+1 Free** **Net: \$59<sup>99</sup>**

(15169) GW2 (15175) GW8 Round (15176) GW2 Pear (15177) GW330 (15184) GW557 (15186) GW1557

**HP (10pk)** **Reg. \$44.99** **4+1 Free** **Net: \$35<sup>99</sup>**

(15241) 5 (15242) 6 (15247) 33 1/2 (15258) 559 (15264) 701 (15265) 702 (15267) 703 (15268) 703L (15271) 1557

**RA (10pk)** **Reg. \$41.99** **4+1 Free** **Net: \$33<sup>59</sup>**

(15295) 1/2 (15299) 3 (15300) 4 (15302) 6 (15306) 33 1/2 (15315) 57 (15318) 557 (15329) 957

**FG SL (5pk)** **Reg. \$35.99** **4+1 Free** **Net: \$28<sup>79</sup>**

(16849) 1557 (15339) 4 (15340) 6 (15341) 8 (15342) 557 (15343) 558 (15345) 1558 (15347) 701 (15348) 702 (15349) 703 (15350) 1702

**RA SL (5pk)** **Reg. \$36.99** **4+1 Free** **Net: \$29<sup>59</sup>**

(15358) 2 (15359) 4 (15360) 6 (15361) 8 (15362) 557 (15364) 1557 (15365) 702

SS White Dental® is now a member of

**HuFriedyGroup**  
The Best In Practice

## Midwest® Burs

[illegible][illegible]

SPECIALTY BURS							
SURGICAL/ENDO LENGTH							
US NO	2	4	6	8	557	558	1557
FG							
RA							

[illegible]

## CARBIDE BURS

10 Pcs/Pk

<b>(11090)</b>	FG - 1/4	<b>(11147)</b>	FG - 246
<b>(11091)</b>	FG - 1/2	<b>(11148)</b>	FG - 256
<b>(11092)</b>	FG - 1	<b>(11106)</b>	FG - 330
<b>(11093)</b>	FG - 2	<b>(11108)</b>	FG - 331
<b>(11094)</b>	FG - 3	<b>(11105)</b>	FG - 329
<b>(11095)</b>	FG - 4	<b>(11110)</b>	FG - 332
<b>(11096)</b>	FG - 5	<b>(11126)</b>	FG - 556
<b>(11097)</b>	FG - 6	<b>(11128)</b>	FG - 557
<b>(11098)</b>	FG - 7	<b>(11130)</b>	FG - 558
<b>(11099)</b>	FG - 8	<b>(11159)</b>	FG - 700
<b>(11114)</b>	FG - 34	<b>(11161)</b>	FG - 701
<b>(11115)</b>	FG - 35	<b>(11163)</b>	FG - 702
<b>(11116)</b>	FG - 36	<b>(11164)</b>	FG - 703
<b>(11117)</b>	FG - 37	<b>(11137)</b>	FG - 1156
<b>(11120)</b>	FG - 39	<b>(11138)</b>	FG - 1157
<b>(11121)</b>	FG - 56	<b>(11139)</b>	FG - 1158
<b>(11122)</b>	FG - 57	<b>(11140)</b>	FG - 1556
<b>(11124)</b>	FG - 58	<b>(11141)</b>	FG - 1557
<b>(11151)</b>	FG - 169	<b>(11142)</b>	FG - 1558
<b>(11155)</b>	FG - 171	<b>(11167)</b>	FG - 1171
<b>(11146)</b>	FG - 245		

Reg. \$19.95 **5+1 FREE = \$16<sup>63</sup>**

(11254) LA - 1  
(11253) LA - 1/2  
(11255) LA - 2  
(11256) LA - 3  
(11257) LA - 4  
(11258) LA - 5  
(11259) LA - 6  
(11260) LA - 7  
(11261) LA - 8  
(11277) LA - 35  
(11278) LA - 36  
(11290) LA - 557

**Reg. \$21.95**

**4+1 FREE**  
**= \$17<sup>56</sup>**

## CARBIDE BURS SHORT/LONG

10 Pcs/Pk

(11178) FG, SS - 4  
(11189) FG, SS - 330  
(11209) FG, SS - 556  
(11211) FG, SS - 557

**Reg. \$22.95**

**4+1 FREE = \$18<sup>36</sup>**

(11152) FG, Long - 169  
(11109) FG, Long - 331  
(11127) FG, Long - 556  
(11129) FG, Long - 557  
(11131) FG, Long - 558  
(11158) FG, Long - 699

**Req. \$19.95**

**5+1 FREE = \$16<sup>63</sup>**

## SURGICAL

10 Pcs/Pk

- (11355) FG, Surgical - 2  
(11356) FG, Surgical - 4  
(11357) FG, Surgical - 6  
(11372) FG, Surgical - 8  
(11360) FG, Surgical - 558  
(11359) FG, Surgical - 557  
(11362) FG, Surgical - 702  
(11358) LA - 2 Surgical  
(11364) LA - 4 Surgical  
(11365) LA - 6 Surgical  
(11366) LA - 8 Surgical

**Reg. \$39.95**

**4+1 FREE = \$31<sup>96</sup>**

## FINISHING BURS

10 Pcs/Pk

(11376) T&F - 7002  
(11378) T&F - 7004  
(11379) T&F - 7006  
(11380) T&F - 7008  
(11382) T&F - 7104  
(11383) T&F - 7106  
(11390) T&F - 7404  
(11391) T&F - 7406  
(11392) T&F - 7408  
(11395) T&F - 7642  
(11399) T&F - 7801  
(11400) T&F - 7802  
(11402) T&F - 7901  
(11403) T&F - 7902  
(11404) T&F - 7903

**Req. \$79.95**

**4+1 FREE = \$63<sup>96</sup>**





## DENTAMERICA®



### Dentamerica Brushes / Cups

(12023) Snap-On type, 6-Web, Medium Soft (403)

**\$12<sup>99</sup>**

(12022) Screw-In Type, 6-Web, Medium Soft, (402)

**\$27<sup>95</sup>**

(12021) Latch Type, 6-Web, Medium Soft, (401)

**\$44<sup>99</sup>**

(19683) Latch Type, Flat End Brushes, White Bristles, (415)

**\$62**

(19682) Screw-In Type, Flat End Brushes, White Bristles, (416)

**\$62**

(19681) Composite Brush Instrument

**\$14**



### Polybite Trays

**\$29<sup>95</sup>**

(19688) Sideless, Posterior, 50/pkg

(19685) Quadrant, 35/pkg

(19687) Anterior, 35/pkg

(19684) Full arch, 30/pkg

(19686) Posterior, 50/pkg



### Mylar Strip

(14468) 100 pieces/box

**\$7<sup>80</sup>**

# Bausch

WE MAKE OCCLUSION VISIBLE



### Articulating Paper 200µ



(10929) In Dispenser Box  
Thin, Blue, 300 Strips

**Reg.\$48.99**



(13223) Refill, Blue 1001  
300 Strips

**Reg.\$43.99**



(10930) In Dispenser Box  
Thin, Red, 300 Strips

**Reg.\$48.99**



(10931) Horseshoe Shape  
Thin, Red, 50 Sheets

**Reg.\$37.99**

### Arti-Check Articulating Paper 40µ



(10932) 104 x 20 mm  
Ex.Thin, Blue, 200 Strips

**Reg.\$39.99**



(14005) 22mm Wide w/Dispenser  
Ex.Thin, Blue, 10 Meter

**Reg.\$29.99**



(10935) Horseshoe  
Thin, Blue, 150 Sheets

**Reg.\$69.99**



(13224) Pre-cut  
Micro-thin Blue, 200 strips

**Reg.\$22.99**



(10933) 104 x 20 mm  
Ex.Thin, Red, 200 Strips

**Reg.\$39.99**



(10934) 16mm Wide w/Dispenser  
Ex.Thin, Red, 15 Meter

**Reg.\$29.99**



(10936) Horseshoe  
Thin, Red, 150 Sheets

**Reg.\$69.99**





Free \$20 to \$500 Gift Card with purchase! Promotional products are qualified!  
Please see P2 for more information.

## Cements & Liner | Crown & Bridge

Crosstex\*

### Articulating Paper

144 Strips/Box

- (11814) Combo Red & Blue (11819) Thin Blue  
(11822) Extra Extra Thin Blue (11821) Extra Thin Blue  
(11820) Thick Blue

Reg. \$16.99 **3+1 FREE = \$12<sup>74</sup>**



Crosstex\*

### Articulating Paper

- (11817) Horseshoe Combo Blue & Red 72 Strips/Box  
(11816) Blue Red Combo Thin, Curved 0.03"71 um  
(11818) Precisely True Thin Blue 144 Strips/Box

Reg. \$23.90 **Sale: \$21<sup>99</sup>**



Kerr\*

### TempBond / TempBondNE

50g B. & 15g C.

- (13441) TempBond NE

Reg. \$95.99 **Sale: \$79<sup>95</sup>**

50Tips/Pk, 50 X 2.4g

- (13495) TempBond Unidose  
(13497) TempBond NE Unidose

Reg. \$114.99



Kerr\*

### MaxCem Elite

Self-Etch/ Self-Adhesive Resin Cement, 2X5g Syringe & 20 Tips

- (13513) White (13506) White Opaque

Reg. \$233.99 **Sale: \$199<sup>95</sup>**

- (13505) Clear

Reg. \$233.99 **2+ @ \$189<sup>95</sup>**



Pulpdent\*

### Lime - Lite Enhanced

- (19601) Kit, 4 - 1.2ml Syringes  
w/20 Applicator Tips

Reg. \$159.95 **Sale: \$118<sup>95</sup>**



GC America\*

### GC Fujicem 2

- (12958) 2x13.3g Cartridges

Reg. \$369 **Sale: \$299**



Kerr\*

### Temp-Bond™ Temporary Crown/Bridge Cement

- (13502) Clear, 1 Syringe, 10 Tips  
(13503) Original, 2 Syringe, 20 Tips  
(13504) NE, 2 Syringe, 20 Tips

Reg. \$129.95 **Sale: \$89<sup>95</sup>**



3M\*

### Ketac Cem

- (12866) Intro Kit. 33g Pwd. & 12ml Liq.

Reg. \$199.95  
**Sale: \$169<sup>95</sup>**



Premier\*

### Hemodent

- |                   | Reg.    | Sale               |
|-------------------|---------|--------------------|
| (14042) 10cc Btl. | \$36.95 | \$29 <sup>95</sup> |
| (14043) 20cc Btl. | \$62.95 | \$52 <sup>95</sup> |
| (14044) 40cc Btl. | \$95.95 | \$92 <sup>95</sup> |



Ultradent\*

### UltraPak Retraction Cord

- |                     |                     |
|---------------------|---------------------|
| (14565) #000, Black | (14564) #00, Orange |
| (14560) #0, Purple  | (14561) #1, Blue    |
| (14562) #2, Green   | (14563) #3, Red     |

Reg. \$28.95 **Sale: \$25<sup>95</sup>**



DMG America\*

### Luxatemp Automix Plus

76g/Cartridge, 15 Automix tips

- (12056) A1 (12057) A2

Reg. \$309.95 **Sale: \$299<sup>25</sup>**



3M\*

### Protemp Plus

- Refill, 67g Base/Catalyst & 16 Mixing Tips, blue;  
6 Tips Free  
(12879) A1 (12880) A2 (12881) A3

Reg. \$314.99 **Sale: \$286<sup>95</sup>**



Premier\*

## Traxodent

(13313) Traxodent value pack, 25 syringes and 50 tips

Reg- \$459.95

**Sale: \$399<sup>95</sup>**



3M\*

## ISO-Form Crowns Refill

### ISO Form Crown Molar Chart

Left - First Molar					Right - First Molar				
U69	U67	U65	U63	U61	U60	U62	U64	U66	U68
U79	U77	U75	U73	U71	U70	U72	U74	U76	U78

Left - Second Molar					Right - Second Molar				
L69	L67	L65	L63	L61	L60	L62	L64	L66	L68
L79	L77	L75	L73	L71	L70	L72	L74	L76	L78

Free \$20 to \$500 Gift Card with purchase! Promotional products are qualified! Please see P2 for more information.



Voco\*

## Structur 2 SC

76g/Cartridge

(14755) A1

(14756) A2

(14757) A3

Reg-\$239.95

**Sale: \$205<sup>95</sup>**



### ISO Form Bicuspid Crown Chart

Left - First Bicuspid					Right - First Bicuspid				
U49	U47	U45	U43	U41	U40	U42	U44	U46	U48
U59	U57	U55	U53	U51	U50	U52	U54	U56	U58

Left - Second Bicuspid					Right - Second Bicuspid				
L49	L47	L45	L43	L41	L40	L42	L44	L46	L48
L59	L57	L55	L53	L51	L50	L52	L54	L56	L58

Reg-\$43.95

**Sale: \$39<sup>95</sup>**

## HurriCaine® Topical Anesthetic Gel

- (10946) Wild Cherry
- (10947) Piña Colada
- (10942) Watermelon
- (10948) Fresh Mint
- (12654) Strawberry

1 oz/Jar Reg.\$19.95

## Topical Anesthetic Spray

(10944) Topical 2oz spray + tip Reg.\$79.95

**Sale \$65<sup>95</sup>**

Meta Biomed\*

## Gutta Percha Points

\*Last Chance! While supplies last!



	Sliding	.04T Sliding	.06T Sliding	.04T Sliding Lengthmark
Size 15	(10005)	(10016)	(10036)	(10023)
Size 20	(10006)	(10017)	(10037)	(10024)
Size 25	(10007)	(10018)	(10038)	(10025)
Size 30	(10008)	(10019)	(10039)	(10026)
Size 35	(10009)	(10020)	(10040)	(10027)
Size 40	(10010)	(10021)	(10041)	(10028)
Size 45	(10011)	N/A	N/A	(10029)
Assorted 15-40	(10004)	(10015)	(10035)	(10022)
Size F	(10045)	N/A	N/A	N/A
Size FM	(10046)	N/A	N/A	N/A
Size M	(10047)	N/A	N/A	N/A
Reg.	\$13.95	\$17.57	\$17.57	\$18.67
<b>5+1Free</b>	<b>Net \$11.63</b>	<b>Net \$14.64</b>	<b>Net \$14.64</b>	<b>Net \$15.56</b>

## Paper Points



	Sliding	.04T Sliding	.06T Sliding
Size 15	(10050)	(10058)	(10066)
Size 20	(10051)	(10059)	(10067)
Size 25	(10052)	(10060)	(10068)
Size 30	(10053)	(10061)	(10069)
Size 35	(10054)	(10062)	(10070)
Size 40	(10055)	(10063)	(10071)
Size 45	(10056)	(10064)	(10072)
Assorted 15-40	(10049)	(10057)	(10065)
Size C	(10073)	N/A	N/A
Size F	(10074)	N/A	N/A
Size M	(10075)	N/A	N/A
Reg.	\$12.95	\$18.95	\$18.95
<b>5+1Free</b>	<b>Net \$10.79</b>	<b>Net \$15.79</b>	<b>Net \$15.79</b>



Free \$20 to \$500 Gift Card with purchase! Promotional products are qualified!  
Please see P2 for more information.

3M\*

## Cavit

Temporary filling material, 1 - 28g Jar  
(12873) Cavit-P, Hardest  
(12875) Cavit-G, Softest  
(12874) Cavit-W, Medium



Reg. \$59.95

**Sale: \$43<sup>95</sup>**

Premier\*

## RC Prep

(14045) 18g/Jar



Reg. \$69.95

**Sale: \$59<sup>95</sup>**

Endo Cushions\*

## Fully Disposable Cushions

AUTOCLAVABLE UP TO 135°C(275°F)



(10654) Autoclavable Cushion Holder with Large and Small Rings

Reg. \$13.95

**4+1 FREE = \$11<sup>16</sup>**

(10800) Disposable Cushions with Cushion Holder, 50 Pcs/box

Reg. \$36.95

**4+1 FREE = \$29<sup>56</sup>**

Kerr\*

## Pulp Canal Sealer (EWT/STD)

(13387) 10.5g Powder & 4ml Liquid, Standard Pack

(13388) Root Canal Sealer, 10.5g Pwd. &, 4ml Liq.



Reg. \$139.95

**Sale: \$129<sup>95</sup>**

Hygenic\*

## Endo Ice

(11765) 6oz. Can

Reg. \$59.99/can

**4+1 FREE = \$47<sup>99</sup>/can**



Sybron Endo\*

## K3 Niti Files

21mm, 25mm, 30mm, and Assorted, 6Pcs/Pkg

Taper 0.2 #15-#45

Taper 0.4 #15-#60

Taper 0.6 #15-#60



Reg. \$149.95/pkg **Sale: \$129<sup>95</sup>**

Mani\*

## K-Files

6Pcs/Box

21mm, 25mm, 31mm, #06-#40

21mm, 25mm, 31mm, #45-#65



Reg. \$19.95

Monoject\*

## Endodontic Needles

25Pcs/Box

(13538) 23Ga. X1-1/4" (13539) 27Ga. X1-1/4"

Reg. \$49.95

**Sale: \$32<sup>95</sup>**



Kendall\*

## Irrigation Syringe With Endo Needle (Monoject)

(13541) 23Ga x 1.25" 100/Pkg

(13542) 27Ga x 1.25" 100/Pkg



Reg. \$99

Mani\*

## Gates Drill

32mm

(12579) #1

(12580) #2

(12581) #3

(12582) #4

(12583) #5

(12584) #6

28mm

(12573) #1

(12574) #2

(12575) #3

(12576) #4

(12577) #5

(12578) #6

## Peeso Reamers

28mm

(12592) #1

(12593) #2

(12594) #3

(12595) #4

(12596) #5

(12597) #6

32mm

(12598) #1

(12599) #2

(12600) #3

(12601) #4

(12602) #5

(12603) #6

6Pcs/Pkg

Reg. \$25.95

**Sale: \$17<sup>95</sup>**



Meta Biomed\*

## MD-Cleanser

While supplies last!

(10088) 17% Edta Solution

100 ml w/One Syringe and 3 Tips

Reg. \$22.95



## MD-Chelcream

(10087) 19% Edta Cream

2ea x 7g Syringe w/10 Tips

Reg. \$32.95



## Adseal

(10086) Resin based Root Canal Sealer

13.5g in Dual Syringe

Reg. \$46.95



## Meta Etchant

(10089) 37% Total Etching Gel,

13.5g in Dual Syringe

Reg. \$26.99



# MARK3

January 1- March 31, 2026



## VPS Impression Material

4x50ml cartridges

	Fast Set	Regular Set
Light	(20104)	(20103)
Medium	(20106)	(20105)
Heavy	(20108)	(20107)
Monophase	(20202)	(20109)

Reg. \$54.99



## Vinyl Polysiloxane

### Alginate Alternative

Used for dental impressions, orthodontic models, removable retainers and splints, simple removable dentures, provisional crown and bridge.

(20205) Fast Set

Work Time: 1 minute  
Intra Oral Set Time: 1 minute  
8 x 50ml cartridges/Box



Reg. \$106.99

## VPS Tray Adhesive

10ml/Bottle

(20102) Reg. \$25.95



## VPS Putty

300ml each Base & Catalyst

(20101) Fast Set (20100) Regular Set

Reg. \$79.99



## 20% Benzocaine

### Topicare Topical Anesthetic Gel

1oz/ jars

(14855) Bubble Gum (14854) Pina Colada  
(14859) Cherry (14857) Strawberry  
(14858) Mint

Reg. \$13.99



**3+1 FREE = \$10.49/Jar**

## Bite Registration Material

2x50ml Cartridges & 6 Mixing Tips

(20207) Fast Set (20206) Regular Set

Reg. \$49.95 **3+1 FREE = \$37.46/set**



## Endo Pulp Vitality Refrigerant Spray

(11247) 6oz./Bottle

Reg. \$36.99



## Sodium Hypochlorite Solution 6%

(11246) 17oz./Bottle

Reg. \$18.95 **Sale: \$16.99/bottle**



## Enamel Care Propy Paste

200/box

(13369) Medium Mint w/TCP  
(13386) Fine Bubble Gum w/TCP  
(13366) Coarse Mint w/TCP  
(11326) Medium Assorted w/TCP  
(13367) Coarse Bubble Gum w/TCP  
(11325) Coarse Assorted w/TCP

Reg. \$39.95 **Sale: \$34.99/Box**



## Bioenzymatic

### Ultrasonic Cleaner

(20204) 64 Tablets/Box

Reg. \$52.99



\*We offer a full money back guarantee on all MARK3 products. If you purchased a MARK3 product and are not satisfied, reach out and we will provide a full refund or a replacement. MARK3 Dental Products are just as good or better than the name brand at a fraction of the price.

**MARK3**  
THE SMART ALTERNATIVE





Valid January 1- March 31, 2026

## BLU MOUSSE

### BITE REGISTRATION

- (13969) Regular Set
- (13970) Super-Fast Set
- (18991) Blu Mousse 80
- (19008) Blu Mousse 60

**\$102<sup>99</sup>**



## BRUSH & BOND

DENTIN/ENAMEL BONDING AGENT

Includes: 3ml liquid, mixing well, plus 100 standard Activator Brushes

- (19007) Liquid 3ml
- (19009) Complete Kit

**\$199<sup>99</sup>**  
**\$341<sup>99</sup>**



## ADD & BOND

ADHESIVE COMPOSITE PRIMER

- (19006) Add & Bond

**\$183<sup>99</sup>**



## ACCUFILM II

### ARTICULATING FILM

- (19022) Black/Black
- (19024) Red/Black

Reg. \$49.99

**\$47<sup>99</sup>**



## DIGITEST<sup>®</sup> 3

DIGITAL PULP VITALITY TESTER

The New Digitest<sup>®</sup> 3 Pulp Vitality Tester is a hand-held, battery-powered diagnostic device that identifies a living tooth by stimulating it with a weak electric current. The unique Digitest 3 stimulus is designed to reliably trigger a patient response in a vital tooth with minimal discomfort.



Reg. \$905

**\$879<sup>99</sup>**

- (18990) Digitest 3, Pulp Vitality Tester

## C&B METABOND

QUICK SELF-CURING CEMENT SYSTEM

- (19023) Cement System
- (19025) L- Powder, Clear
- (19014) L- Powder, Radiopaque, Tooth shade
- (19016) Universal Catalyst
- (19015) Quick Base, "B"

**\$982<sup>99</sup>**  
**\$87<sup>99</sup>**  
**\$119<sup>99</sup>**  
**\$495<sup>99</sup>**  
**\$194<sup>99</sup>**



## MIXING TIPS

GENUINE MIXPAC TIPS

bag of 30

- (19012) Aqua Base
- (19011) Yellow Base
- (18989) Pink Base

Reg. \$72

**\$66<sup>99</sup>**



## Comfort Grip<sup>™</sup>

**\$311<sup>99</sup>**

- (21005) Triple Bend 30K Insert (Standard Flow)
- (21007) Universal 30K Insert (Standard Flow)
- (21004) Universal Slim 30K Insert (Standard Flow)



## 30K Universal Internal Water Scaler Insert

- (21006) Regular Set

**\$277<sup>99</sup>**



## SNAP POWDER

- (18993) 40gm/ Bottle

Reg. \$54.99

**\$51<sup>99</sup>**



## SNAP LIQUID

- (18994) 4oz/ Bottle

**\$55<sup>99</sup>**



3M\*

## Express

- (10232) Standard Putty, 2Jar x 305ml

Reg. \$182.95

**Sale: \$169<sup>95</sup> 2+ @ \$149<sup>95</sup>**



Waterpik\*

## Hold Impression Tray Adhesive

- (14887) 2 x 14ml

Reg. \$36.95

**Sale: \$34<sup>95</sup>**



Defend\*

## Putty

- (12037) Fast Set

Reg. \$129.95

**Sale: \$109<sup>95</sup>**



Lascod\*

## Kromopan

- (13291) 1Lb/Pouch-Fast Set

Reg. \$21

**Sale: \$16<sup>95</sup>**



## Impression Trays (Made in U.S.A)

- |                  |                  |
|------------------|------------------|
| (12261) UPPER XS | (12256) LOWER XS |
| (12259) UPPER S  | (12254) LOWER S  |
| (12258) UPPER M  | (12253) LOWER M  |
| (12257) UPPER L  | (12252) LOWER L  |
| (12260) UPPER XL | (12255) LOWER XL |

	A	B	UPPER				
			U-1(XS)	U-2(S)	U-3(M)	U-4(L)	U-5(XL)
		A	52	54	58	59	63
		B	65	67	72	75	84

- |                  |                  |
|------------------|------------------|
| (12281) UPPER XS | (12276) LOWER XS |
| (12279) UPPER S  | (12274) LOWER S  |
| (12278) UPPER M  | (12273) LOWER M  |
| (12277) UPPER L  | (12272) LOWER L  |
| (12280) UPPER XL | (12275) LOWER XL |

	A	B	UPPER			
			U-1(S)	U-2(M)	U-3(L)	U-4(XL)
		A	58	63	64	68
		B	64	70	77	78

- |                  |                  |
|------------------|------------------|
| (12271) UPPER XS | (12266) LOWER XS |
| (12269) UPPER S  | (12264) LOWER S  |
| (12268) UPPER M  | (12263) LOWER M  |
| (12267) UPPER L  | (12262) LOWER L  |
| (12270) UPPER XL | (12265) LOWER XL |

	A	B	LOWER				
			L-1(XS)	L-2(S)	L-3(M)	L-4(L)	L-5(XL)
		A	50	53	57	66	60
		B	65	68	75	78	84

- |                  |                  |
|------------------|------------------|
| (12291) UPPER XS | (12286) LOWER XS |
| (12289) UPPER S  | (12284) LOWER S  |
| (12288) UPPER M  | (12283) LOWER M  |
| (12287) UPPER L  | (12282) LOWER L  |
| (12290) UPPER XL | (12285) LOWER XL |

	A	B	LOWER			
			L-1(S)	L-2(M)	L-3(L)	L-4(XL)
		A	56	60	62	63
		B	65	72	75	83

Reg.\$16.95

**4+1 FREE = \$13<sup>56</sup>**

Premier\*

## Triple Trays

- (14036) Anterior, 35Pcs/Pack  
 (14035) Posterior, 48Pcs/Pack  
 (14037) Quadrant, 40Pcs/Pack  
 (14038) Sideless Posterior, 48Pcs/Pack

Reg.\$109.99

**Sale: \$99<sup>95</sup>**

Matech\*

## Kromatica

- |           |         |          |
|-----------|---------|----------|
| 1Lb/Pouch | Regular | Fast Set |
| Cherry    | (13293) | (13296)  |
| Mint      | (13294) | (13297)  |
| Bubblegum | (13295) | (13298)  |

**Sale: \$17<sup>95</sup>**

**17+3 FREE = \$15<sup>25</sup>**



Solid



Solid Denture



Perforated



Perforated Denture

Waterpik\*

## Impression / Dual Trays

### Master Trays

- |   |   |
|---|---|
| (14879) 1 - Large Upper                       | (14880) 2 - Large Lower                       |
| (14881) 3 - Medium Upper                      | (14882) 4 - Medium Lower                      |
| (14883) 6 - Small Lower                       | (14884) 7 - Partial - Upper Left, Lower Right |
| (14885) 8 - Partial - Upper Right, Lower Left | (14886) 9 - Anterior                          |

Reg.\$22.95

### Tra-tens Trays

- |   |   |
|---|---|
| (14903) 1 - Small Upper                       | (14904) 2 - Medium Upper                      |
| (14905) 3 - Large Upper                       | (14906) 4 - Small Lower                       |
| (14907) 5 - Medium Lower                      | (14908) 6 - Large Lower                       |
| (14909) 7 - Anterior                          | (17023) 8 - Bilateral Upper Left, Lower Right |
| (14910) 9 - Bilateral Upper Right, Lower Left |   |

Reg.\$20.95

## Autoclavable Impression Trays

5Pcs/Pack

- (10830) No.1 Upper Large  
 (10831) No.2 Lower Large  
 (10832) No.3 Upper Medium  
 (10833) No.4 Lower Medium  
 (10834) No.5 Upper Small  
 (10835) No.6 Lower Small  
 (10836) No.7 Quadrant  
 (10837) No.8 Quadrant  
 (10838) No.9 Upper Anterior  
 (10839) No.10 Lower Anterior

Reg.\$18.95

**Sale: \$16<sup>95</sup>**



Crosstex\*

## Mixing Pads

- (12170) 3"x3"

Reg. \$6.99

**3+1 FREE = \$5<sup>24</sup>**

- (12171) 3"x6", 100 sheets

Reg. \$7.99

- (12172) 6"x6", 100 sheets

Reg. \$14.25

**Sale: \$13<sup>99</sup>**



Heraeus Kulzer\*

## Flexitime

2X50ml Cartridges & Tips

- (13622) Heavy Tray  
 (13623) Correct flow

Reg.\$89.95

**Sale: \$79<sup>95</sup>**

- (13621) Easy Putty 600ml

Reg.\$233.99

**Sale: \$179<sup>95</sup>**





Free \$20 to \$500 Gift Card with purchase! Promotional products are qualified!  
Please see P2 for more information.

Fairfax\*

## Stabilok Dental Pins

Standard Kit, 20 Pins & 1 Drill

- (12911) Titanium, Yellow, 0.021"  
(12910) Titanium, Orange, 0.027"  
(12913) Stainless Steel, Blue, 0.021"  
(12912) Stainless Steel, Green, 0.027"



Reg. \$109.95

**Sale: \$99**

Coltene / Whaledent\*

## Para-Post

Size	Steel Post Refill	Titanium Post Refill	Drills	Steel Vented Posts
0.036	P244-3 <b>13983</b>	P284-3 <b>13990</b>	P42-3 <b>13997</b>	P44-3 <b>14011</b>
0.040	P244-4 <b>13984</b>	P284-4 <b>13991</b>	P42-4 <b>13998</b>	P44-4 <b>14012</b>
0.045	P244-4.5 <b>13985</b>	P284-4.5 <b>13992</b>	P42-4.5 <b>13999</b>	P44-4.5 <b>14013</b>
0.050	P244-5 <b>13986</b>	P284-5 <b>13993</b>	P42-5 <b>14000</b>	P44-5 <b>14014</b>
0.055	P244-5.5 <b>13987</b>	P284-5.5 <b>13994</b>	P42-5.5 <b>14001</b>	P44-5.5 <b>14015</b>
0.060	P244-6 <b>13988</b>	P284-6 <b>13995</b>	P42-6 <b>14002</b>	P44-6 <b>14016</b>
	10Pcs/Pkg	10Pcs/Pkg	3Pcs/Pkg	10Pcs/Pkg
	<b>Reg. \$199</b> <b>Sale: \$179.95</b>	<b>Reg. \$168.95</b> <b>Sale: \$159.95</b>	<b>Reg. \$109.95</b> <b>Sale: \$99.95</b>	<b>Reg. \$119.95</b> <b>Sale: \$109.95</b>

Fairfax\*

## Stabilok Dental Pins Economy Kit

100 Pins & 5 Drills

- (12915) Titanium, Yellow, 0.021"  
(12917) Titanium, Orange, 0.027"  
(12914) Stainless Steel, Blue, 0.021"  
(12916) Stainless Steel, Green, 0.027"



Reg. \$329.95

**Sale: \$299<sup>95</sup>**

Coltene / Whaledent\*

## Para-Post

Size	Fiber White Posts	Plastic Impression Posts	Fiber Resin Esthetic Posts
0.036	/	P743-3 <b>14844</b>	PF171-3 <b>14838</b>
0.040	/	P743-4 <b>14845</b>	PF171-4 <b>14839</b>
0.045	F161-4.5 <b>13976</b>	P743-4.5 <b>14846</b>	PF171-4.5 <b>14840</b>
0.050	F161-5 <b>13977</b>	P743-5 <b>14847</b>	PF171-5 <b>14841</b>
0.055	F161-5.5 <b>13978</b>	P743-5.5 <b>14848</b>	PF171-5.5 <b>14842</b>
0.060	F161-6 <b>13979</b>	P743-6 <b>14849</b>	PF171-6 <b>14843</b>
	5Pcs/Pkg	20Pcs/Pkg	5Pcs/Pkg
	<b>Reg. \$97.95</b> <b>Sale: \$95.95</b>	<b>Reg. \$99.95</b> <b>Sale: \$79.95</b>	<b>Reg. \$102.95</b> <b>Sale: \$98.95</b>

## Autoclavable Silicone Instrument Code Rings

Colour	Small, Fits #2 & #4 Handles	Large Fits #6, #7, #8 & Surgical instr.
Black	<b>10761</b>	<b>N/A</b>
Light Blue	<b>10764</b>	<b>10755</b>
Dark Blue	<b>10762</b>	<b>10753</b>
Green	<b>10763</b>	<b>10754</b>
Purple	<b>N/A</b>	<b>10756</b>
Red	<b>10766</b>	<b>10758</b>
White	<b>10767</b>	<b>10759</b>
Yellow	<b>10768</b>	<b>N/A</b>



Reg. \$7.95

**Sale: \$6<sup>95</sup>**

Premium plus\*

## Light Protective Hand Shield

(10641) 12.5cm x 26cm x 0.3cm

Reg. \$35.95/ea

**Sale: \$29<sup>99</sup>/ea 5+ @ \$24<sup>95</sup>/ea**



## BeyesLube

Made in U.S.A, Synthetic Technology, Ultra-Formulation

(13701) 500ML

Reg. \$88.40

**Sale: \$49<sup>95</sup>**



Kavo\*/Scican

## Spray for Handpiece

500ML

(13687) Kavo\*

Reg. \$79.95

**Sale: \$72<sup>95</sup>**



(13688) Nozzle for Kavo spray

Reg. \$15.95

**Sale: \$12<sup>95</sup>**

## Handpiece Color-code Bands

(11243) 36pcs/Bag, Assorted Colors

Reg. \$28.99/ea

**Sale: \$26<sup>50</sup>**



Medicom\*

## Denti-Care Propy Paste In Jar

12oz./Jar

- (13753) Coarse Mint (13754) Fine Bubble Gum  
(13755) Medium Cherry (13756) Medium Mint



Reg. \$33.99

Premier\*

## Ziroidex Propy Paste

1lb/Jar

(10245) Mint Coarse (10248) Medium Fine

Reg. \$49.99





## Preventative | Restorative

Germiphene\*

### Neutrarinse

2L/Btl., 2% Neutral Sodium Fluoride Rinse

(20911) Raspberry (20910) Mint

Reg. \$75.99



Germiphene\*

### 60 Second

450ml/Btl., Topical Fluoride Gel

(20915) Strawberry (20914) Mint

Reg. \$35 **Sale: \$31<sup>59</sup>**



Germiphene\*

### Gel 7

450ml/Btl., Neutral Topical Fluoride Gel

(20913) Strawberry (20912) Mint

Reg. \$35 **Sale: \$31<sup>59</sup>**



Premier\*

### Sycamore Wedges

400Pcs/Pack

(14048) Yellow, 13 (14049) Blue, 15  
(14050) Red, 16 (14052) Light Blue, Mini

Reg. \$109.95- **Sale: \$89<sup>95</sup>**



Kerr\*

### OptiBond Solo Plus

(13442) 5ml/Btl

Reg. \$153.90/btl

**Sale: \$149<sup>40</sup>/btl 3+@ \$129<sup>95</sup>/btl**



Heraeus Kulzer\*

### IBond Universal Value Pack

(13472) 3X4ml

Reg. \$479 **Sale: \$429**



3M\*

### Mandrels

(10121) 1983RA, 3Pcs/Pack

Reg. \$59.95 **Sale: \$53<sup>99</sup>**



Free \$20 to \$500 Gift Card with purchase! Promotional products are qualified!

Please see P2 for more information.



Medicom\*

### Duraflor 5% Neutral Sodium Varnish

(13741) Tube 10ml (Bubble Gum)

Reg. \$60.99



Heraeus Kulzer\*

### Gluma Desensitizer

(13618) 5ml/Btl.

Reg. \$119.95 **3+1 FREE = \$89<sup>96</sup>**



Mark 3\*

### Adult Toothbrush

(21222) Individually wrapped, Assorted colors, 72/Box

Reg. \$75 **Sale: \$67<sup>99</sup>**



### Premium Extra Soft Child Toothbrushes

(13470) Dinosaur, 4 Assorted Colors, 72 per box

Reg. \$67.99



Waterpik\*

### Original Tofflemire Dead Soft Matrix Bands

0.001 Gauge 36Pcs/Pack

(14930) No. 2  
(14931) No. 13

Reg. \$15.95



Waterpik\*

### Original Tofflemire Matrix Bands

36Pcs/Pack

0.002 Gauge 0.0015 Gauge  
(14922) No. 1 (14923) No. 1  
(14924) No. 2 (14925) No. 2  
(14927) No.13 (14926) No. 3  
(14928) No. 13

Reg. \$15.95 **Sale: \$12<sup>95</sup>**



3M\*

### Sof-Lex, Finishing & Polishing Strips

(10107) #1954 Coarse/Medium, 150Pcs/Box  
(10108) #1954N Coarse/Medium-Narrow, 100Pcs/Box  
(10109) #1956 Fine/Superfine, 120Pcs/Box

Reg. \$72.95 **Sale: \$69<sup>95</sup>**







Free \$20 to \$500 Gift Card with purchase! Promotional products are qualified!  
Please see P2 for more information.

Pulpdent\*

## Etch-Rite Etching Gel

38% Phosphoric Acid

(14056) Etch-Rite Kit, 4X1.2ml Syringe & 8 Tips

Reg. \$29.95

**Sale: \$25<sup>95</sup>**



Kuraray\*

## Clearfill SE Bond

(13605) 6ml Primer & 5ml Bond & Acc.

Reg. \$252

**Sale: \$199<sup>95</sup>**

**2+ @ \$189<sup>25</sup>/pk**



Ivoclar Vivadent\*

## Tetric EvoFlow

2g/Syringe & 5 Tips

(14808) A1

(14809) A2

(14810) A3

(14811) A3.5

Reg. \$109.95

**Sale: \$89<sup>95</sup>**



Pulpdent\*

## Jumbo Etch-Rite Refill

(14055) 2X25ml Syringe

Reg. \$99.95

**Sale: \$75<sup>95</sup>**



Heraeus Kulzer\*

## Charisma Class

4g/Syringe

(13633) A1

(13634) A2

(13635) A3

(13636) A3.5

(13639) B2

Reg. \$69.95

**Sale: \$59<sup>95</sup>**



GC America\*

## Fuji IX GP

(12962) 1:1 Kit, 15g Pwd. & 8g Liq. A2

Reg. \$269.95

**Sale: \$219<sup>95</sup>**



Ivoclar Vivadent\*

## Tetric EvoCeram

Cavifil 0.25X20

(14802) A1

(14803) A2

(14804) A3

(14805) A3.5

Reg. \$149.95

**Sale: \$139<sup>95</sup>**



Zestdent\*

## StarFlow

5g/Syringe

(11833) A1

(11835) A3

(11834) A2

(11836) A3.5

Reg. \$125.99

**Sale: \$105<sup>90</sup>**



Kerr\*

## Revolution Formula 2 Flow

1gX4 Syringe & 20 Tips

(13427) A1

(13428) A2

(13429) A3

Reg. \$128

**Sale: \$112<sup>99</sup>**



Kerr\*

## Point 4

Unidose 0.2x20

(13464) A1

(13466) A3

(13465) A2

Reg. \$119.95

**Sale: \$109<sup>95</sup>**



3M\*

## Filtek Z250

4g Syringe

(10093) A1

(10094) A2

(10095) A3

(10096) A3.5

Reg. \$99.90/pk

**Sale: \$89<sup>95</sup>/pk**

Capsules 0.2gX20

(10203) A1

(10204) A2

(10205) A3

(10206) A3.5

Reg. \$159/pk

**Sale: \$139<sup>95</sup>/pk**



Kerr\*

## Herculite XRV Enamel

5g/Syringe

(13362) A1

(13363) A2

(13364) A3

(13365) A3.5

Unidose 0.25X20

(13374) A1

(13375) A2

(13376) A3

(13377) A3.5

Reg. \$99.95

**Sale: \$89<sup>95</sup>**



3M\*

## Scotchbond Universal Adhesive Refill

(10178) Adhesive 5ml/Bottle

Reg. \$229.95

**Sale: \$198<sup>95</sup>**



Kerr\*

## OptiBond Solo Plus Unidose Kit

(13440) 100/pk Refill

Reg. \$399.99

**Sale: \$369<sup>95</sup>**



## Dia-X™ Bond UNIVERSAL

Single Component Universal Bonding Agent

[11466] Dia-X Bond Universal

- Versatile with all etching techniques
- All direct and indirect restorations
- Light-, self- & dual-cure compatible
- Virtually no post-op sensitivity
- Advanced 10-MDP monomer
- Convenient: true 1-bottle bond
- Uncompromising bond strength
- Stable at room temperature



Reg. \$157.99

**BUY 1, GET 1 FREE!**

## D.LUX+

Wavelength Cordless Curing Light

Contains: D-Lux+ hp & charger, light probe, light protector, disposable sheaths (200/box), power supply (adapter)

- Powerful 2,400 mW/cm2 output
- Dual wavelength: 385 - 515 nm
- 360° swivel light probe
- 5 versatile curing modes
- Built-in light intensity sensor
- High capacity 2,600 mAh battery
- Wireless inductive charger



[20050] D-Lux+ Regular Kit

Reg. \$1,699

\*DiaFil syringe refills or DiaFil Flow syringe refills. Choices of shades.

## DiaFil Flow™

Light-Cured Flowable Composite

- Perfect adaptation and handling
- Excellent color adaptability
- Pit & fissure sealant
- Excellent tensile strength and low shrinkage
- Highly radiopaque
- Class III, IV and V direct restorations
- Base/Liner under posterior restorations in Class I, II



**Regular Pack** Contains: 1 x 2g flowable syringe & 10 tips

[20245] A1 [20246] A2 [20247] A3 [20248] A3.5

Reg. \$42.90/pkg

**Sale: \$39.99**

**Econo Pack** Contains: 4 x 2g flowable syringe & 40 tips

[20057] A2 [20058] A3 [20059] A3.5

Reg. \$158/pkg

**Sale: \$139.99**



## DiaEtch™

37% Phosphoric Acid Etching Gel

[A2001-3103] **Regular Pack** Contains: 2 x 3 ml syr. and 10 disposable tips

Reg. \$17.90/pkg

**Sale: \$15.59**

[12313] **Refill Pack** Contains: 1 x 5 ml syr. and 5 disposable tips

Reg. \$15.99/pkg

**Sale: \$11.99**



## DiaFil™

Light-Cured Nanohybrid Composite

**Syringe Refill Package** (1 x 4g)

[20603] A1 [20604] A2 [20605] A3 [20606] A3.5

Reg. \$79.95/pkg

**Sale: \$69.99**

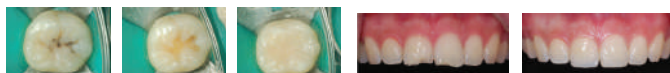
**Capsule Refill Type** (20 X 0.25g)

[20060] A1 [20061] A2 [20062] A3 [20063] A3.5

Reg. \$99.99/pkg



\*Additional shades available.



## Dia-ProSeal™

Epoxy Resin-Based Root Canal Sealer

- Excellent sealing ability
- Low shrinkage & solubility
- Outstanding flowability
- Highly antimicrobial with Ca(OH)2
- Fast preparation w/ dual syringe
- Setting time: 3-4 hours



[20052] **Dia-ProSeal Regular Kit**

Contains: 1 Syringe of 16g, 1 Mixing Pad and 1 Spatula

Reg. \$76.99

## Diapex® Plus

Calcium Hydroxide with Iodoform

[12048] **Regular Kit**

1 x 2g syringe and 20 tips

Reg. \$72.99



## Dia-Root™ Bio Sealer

BioCeramic Root Canal Sealer

[20053] **Dia-Root Bio Sealer Regular Kit**

Contains: 2 g syringe, 20 tips, 1 cap

Reg. \$100.99



## DiaTemp™ & DiaTemp™ Flow

### Light Cured Temporary Restorative Material

#### Features

- DiaTemp Flow (Low viscosity): fast and easy application
- DiaTemp (High viscosity): no mixing required
- Great for implant access holes
- Elastic: quick and simple removal in one piece
- Good adhesion for tight sealing of margins
- Strong and durable: high resistance to external force



[12970] **BLUE** DiaTemp  
[11119] **YELLOW** DiaTemp  
Contains: 3 x 3 g syringe

[11118] **BLUE** DiaTemp Flow  
[10680] **YELLOW** DiaTemp Flow  
Contains: 5 x 1.8 g syringe and 10 tips

Reg. \$57.99 **Sale: \$48.99**

## Paper Point

#8-80 Accessory Sizes: 15/40, 45/80, 90/140

[21248] to [21294] Non Marked 200/box

Reg. \$15.99 **Sale: \$9.99**

[212985] to [MP201-S693] Millimeter Marked 200/box

Reg. \$15.99 **Sale: \$12.99**

**BUY 3, GET 1 FREE!**

\*of the same value



## Gutta Percha

#8-80 Accessory Sizes: 15/40, 45/80, 90/140

[12891] to [11324] Non Marked 120/box

Reg. \$16.99 **Sale: \$15.99**

[ML101-S601] to [ML101-S693] Millimeter Marked 120/box

Reg. \$19.99 **Sale: \$17.99**



## Dia-X™ Files

Heat-Treated NiTi Rotary Files

21mm, 4/Pkg

[13372] DX 19mm

[21244] D108

[21238] D1 21mm

[21245] D2 25mm

[21239] D2 21mm

[21246] D3 25mm

[21240] D3 21mm

[21247] D4 25mm

[21241] D4 21mm

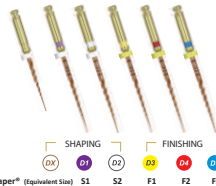
[21248] D5 25mm

[21242] D5 21mm

[21249] D1-D4 25mm

[21243] D1-D4 21mm

Reg. \$45.99/pkg



## Gutta Percha Obturator Pellet

[14820] 100/bottle Reg. \$34.99



## Dia-Endo Ring

[14821] Reg. \$37.90 **Sale: \$30.99**



## Endo Stops

[20239] 100/bag Reg. \$13.99



## K-Files™

21mm, 6/Pkg

25mm, 6/Pkg

[12408] 08

[12409] 10

[12428] 08

[12429] 10

[12410] 15

[12411] 20

[12430] 15

[12431] 20

[12412] 25

[12413] 30

[12432] 25

[12433] 30

[12420] 35

[12415] 40

[12434] 35

[12435] 40

[12416] 45

[12436] 45

Reg. \$12.95/pkg **Sale: \$9.99**



## Dia-Pro W™ GOLD

Gutta Percha & Paper Point

**BUY 2 GUTTA PERCHA, GET 2 OF MATCHING PAPER POINT FREE!** (choice of size)

- Precisely match WaveOne® GOLD Rotary Files
- Cadmium free, latex free, and highly radiopaque
- Millimeter marked: quick and easy method for depth measurements
- Length = 28 mm +/- 1
- Convenient one-hand slide open packaging

Gutta Percha, 60/Box

Paper Point, 100/Box

[12051] Small

[12700] Small

[20054] Primary

[12701] Primary

[12049] Medium

[12715] Medium

[12050] Large

[12714] Large

[12052] Assorted

[12437] Assorted

Reg. \$39.95/pkg

Reg. \$22.99/pkg

**Sale: \$33.99**

**Sale: \$19.99**



## DUO-GUN

Cordless Backfill Obturation Device

[4007-2001] Duo-Gun Regular Kit

#### Duo-Gun™ Features

- Variable temperature settings: 140°C, 170°C, 200°C
- Temperature reaches 200°C within 15 seconds
- Designed for both left-handed and right-handed individuals
- Operate hand trigger with minimal effort
- Strong and durable tips (available in 23G and 25G)

Reg. \$1,490



## DUO-PEN

Cordless Warm Vertical Compaction Device

[4007-2002] Duo-Pen Regular Kit

#### Duo-Pen™ Features

- Tightly compacts and seals all canals incl. lateral canals
- 3 temperature settings: 170°C, 200°C, and 230°C
- Softens, spreads, cuts, and compacts gutta percha
- Quick heating tip reaches 230°C within 1 second
- 5 color-coded tip sizes: #.04-40, .04-45, .04-50, .06-50, .08-55

Reg. \$1,399



## DIA-DUO

Complete Cordless Obturation System

[4007-2000] Dia-Duo Regular Kit

Reg. \$2,395



**Look Suture** 12Pcs/Box

(13728) Silk, Black braided, 4-0, 18" length, C6 Needle, 781B  
 (13732) Silk, Black braided, 3-0, 18" length, C31 Needle, 785B  
 (13733) Silk, Black braided, 3-0, 18" length, C7 Needle, 786B  
 (13731) Silk, Black, 3-0, 18" length, C6 Needle, 3/8" Circle, 784

(13712) Gut-Plain, 4-0, 27" length, C6 Needle, 551B  
 (13720) Gut-Plain, 4-0, 18" length, C6 Needle, 3/8 Cir., 591B  
 (13714) Gut-Plain, 3-0, 27" length, C6 Needle, 554B  
 (13713) Gut-Plain, 3-0, 27" length, C7 Needle, 553B  
 (13716) Gut-Chromic, 4-0, 18" length, C6 Needle, 558B  
 (13717) Gut-Chromic, 4-0, 27" length, C6 Needle, 559B  
 (13718) Gut-Chromic, 3-0, 27" length, C6 Needle, 560B

Reg-\$89.99

**Sale: \$79<sup>95</sup>**

TPC\*

**Universal Film Mount**

(19407) 1000 Windows/Roll

Reg-\$49.95

**Sale: \$45<sup>95</sup>****Septanest**

Latex-free plungers and seals, 50 Cartridges/Box

(10602) 1:200,000 (10603) 1:100,000

Reg-\$109.95

**Sale: \$99<sup>95</sup>**

Monoject\*

**400 Plastic & 401 Metal HUB**

100Pcs/Box	400 Plastic	401 Metal
25G Short	(13525)	(13531)
25G Long	(13526)	(13532)
27G Long	(13527)	(13533)
27G Short	(13528)	(13534)
30G Extra Short	(13529)	(13536)
30G Short	(13530)	(13535)

Reg-\$29.95

**Sale: \$25<sup>95</sup>**

Cook Waite\*

**Lidocaine**

(13595) Red 2%, 1:100,000, 50 Cartridges/Box  
 (13594) Green 2%, 1:50,000, 50 Cartridges/Box

Reg-\$98

**Sale: \$72<sup>95</sup>**

J&amp;J\*

**Iris Scissors**

(10224)

Reg-\$18

**Sale: \$16<sup>50</sup>**

J&amp;J\*

**Ethicon Spongostan**

(13355) 24Pcs/Box 1cmx1cmx1cm Cube

Reg.\$69.95

**4+1 Free = \$55<sup>96</sup>/ea****PeriAcryl® 90 High Viscosity****Benefits of PeriAcryl® 90**

**PeriAcryl® 90** forms a zone of inhibition against bacteria that can cause infection.

Using **PeriAcryl® 90** helps stop bleeding and seals off wounds to reduce surgical time spent on achieving hemostasis or placing sutures.

**PeriAcryl® 90** is a strong and comfortable dressing compared to dental packing that can feel bulky and fall off too soon.

**Characteristics of PeriAcryl® 90**

- Polymerizes rapidly in contact with water or moist oral tissue.
- Stays in place for up to 14 days when a multi-layer application is made.
- Dyed violet for increased visibility during application.
- Biocompatible and non-toxic

(20025) PeriAcryl 90, High Viscosity, Violet, W/ Tray & 50 Pipettes

Reg-\$149

**Sale: \$139.95**

(20024) Regular Viscosity, Violet, W/Tray & 50 Pipettes

Reg-\$139

**Sale: \$129.95****Orabloc®**

**Articaine hydrochloride and epinephrine bitartrate Injection**  
 40 mg/mL/0.018 mg/mL (1:100,000) and 40 mg/mL/0.009 mg/mL (1:200,000)

- Rapid onset of anesthesia within 1-3 minutes
- Complete anaesthesia lasts from 45 to 75 minutes per cartridge
- Only 10% overage of epinephrine<sup>1</sup>
- Sodium edetate free, methylparaben free and latex free
- Each cartridge is sealed individually in the blister for maximum protection



(18316) Orabloc 1:100,000  
 EPI 4% Arti 1.8ml

50Pcs/Box

Reg-\$99.95

(18317) Orabloc 1:200,000  
 EPI 4% Arti 1.8ml

**Sale: \$89<sup>95</sup>/ea**





Free \$20 to \$500 Gift Card with purchase! Promotional products are qualified!  
Please see P2 for more information.



## Glassvan Surgical Blades

100Pcs/Box

(3001T-10) #10 (10080) #12  
(10078) #12B (10081) #15  
(10079) #15C (10740) #22

Reg. \$39.95

**Sale: \$36<sup>95</sup>**



## Sterile Technocut Disposable Scaples

10Pcs/Box

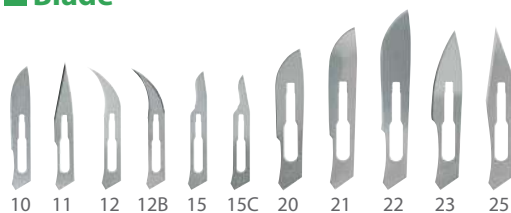
(10379) #10  
(13646) #12  
(14060) #15

Reg. \$15.95

**Sale: \$13<sup>90</sup>**



## Blade



Code	Size	Reg.	Sale
18428	10	\$162	\$96.99
18429	11	\$162	\$96.99
18430	12	\$298	\$150.99
18431	12B	\$298	\$235.99
18432	15	\$162	\$96.99
18433	15C	\$298	\$235.99
18434	20	\$162	\$96.99
18435	21	\$162	\$96.99
18436	22	\$162	\$96.99
18437	23	\$298	\$150.99
18438	25	\$162	\$96.99

(13865) Mathieu Needle Holder,  
5-1/2, Serrated Jaws

Reg. \$78

**Sale: \$65.99**



(13866) Aspirating Syringe TYPE CW

Reg. \$92

**Sale: \$86.99**



(14202) Aspirating Syringe 1.8 cc, TYPE A

Reg. \$89

**Sale: \$71.99**



## Collagen

### Absorbable Collagen Membranes

Code	Description	Reg.
18405	HeliTape® 1" x 3" (2.5cm x 7.5cm)	\$473
18406	HeliCote® 3/4" x 1 1/2" (2cm x 4cm)	\$338
18407	HeliPlug® 3/8" x 3/4" (1cm x 2cm)	\$306

### Absorbable Collagen Membranes

Code	Description	Reg.
18408	HeliMend® 15mm x 20mm	\$228
18409	HeliMend® 20mm x 30mm	\$282
18410	HeliMend® 30mm x 40mm	\$456

### Advanced Collagen Membrane

Code	Description	Reg.
18411	HeliMend® 15mm x 20mm	\$268
18412	HeliMend® 20mm x 30mm	\$322
18413	HeliMend® 30mm x 40mm	\$473



Absorbable Collagen  
Membranes



Integra collagen  
membrane has  
excellent handling  
characteristics.

## N-Tralig Intraligamentary Syringe

Code	Size/Type	Reg.	Sale
19064	Syringe, 76-55SS	\$721	
19062	Cartridge Barrel Solid Wall, PN2SS	\$48	
19063	Cartridge Barrel Shield Windows, PN3SS	\$86	
19065	30° Syringe Adapter, 76-56	\$77	\$73.99



19064



19062



19063

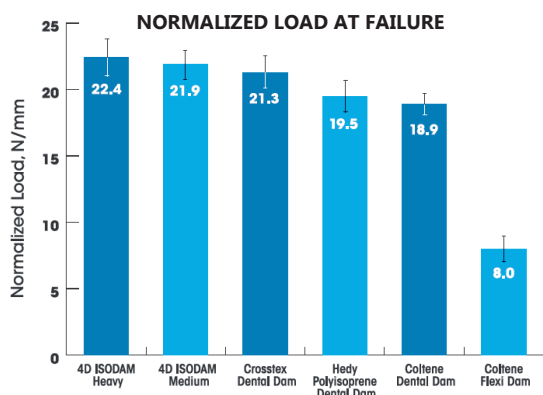


19104

# 4D ISODAM®

## LIGHT BLUE POLYISOPRENE DENTAL DAM

WHEN FAILURE IS NOT AN OPTION,  
CHOOSE ISODAM®.



**DENTAL ADVISOR**  
Non-Latex Dental Dam Tear Testing Comparison  
Not made with natural rubber latex



12 TIME  
AWARD  
WINNER



“For clinical procedures where dental dam stretch over 30 mm is required, the 4D Rubber **ISODAM®** has best-in-class tear resistance among the non-latex dental dams tested.

- Dental Advisor

**STANDARD PACKAGE \$46.99**  
**Net 3+1: \$35.24**  
**Net 7+3: \$32.89**

**ECONOMY PACKAGE \$196.99**  
**Net 4+1: \$157.59**

5" x 5" Medium 20/pack (2013)  
5" x 5" Heavy 20/pack (2014)  
6" x 6" Medium 15/pack (2016)  
6" x 6" Heavy 15/pack (2015)

5" x 5" Medium 100/pack (2017)  
5" x 5" Heavy 100/pack (2020)  
6" x 6" Medium 75/pack (2019)  
6" x 6" Heavy 75/pack (2018)

## BIODAM® LOW PROTEIN LATEX DENTAL DAM

## ISODAM® HD ROYAL BLUE POLYISOPRENE DAM



5+5  
Biodam  
Latex

**Biodam®**

**REGULAR PACKAGE \$26.99**  
**Net 5+5: \$13.50**

**GREEN:**

5" x 5" Medium 52/pack (20225)  
6" x 6" Medium 36/pack (20222)

**BLUE:**

5" x 5" Medium 52/pack (20221)  
6" x 6" Medium 36/pack (21008)



WHEN YOU NEED  
THE BEST,  
CHOOSE ISODAM

- Compatible with the use of chloroform
- 100% Polyisoprene Non-Latex
- Tear Resistant with up to 1200% elongation



3+1  
or  
7+3

**Isodam® HD**

**STANDARD PACKAGE \$46.99**  
**Net 3+1: \$35.24**  
**Net 7+3: \$32.89**

5" x 5" Medium 20/pack (11309)  
5" x 5" Heavy 20/pack (12306)  
6" x 6" Medium 15/pack (12160)  
6" x 6" Heavy 15/pack (12651)

**4D** Visit us at: [www.4d-dental.com](http://www.4d-dental.com)

Free goods ship with order. Promotions valid January 1 to March 31, 2026.

# Feel Confident & Protected

The Best in Practice Infection Prevention & Control Solutions—Save Today! 🌟

**Promo Code: 3534** January 1st – March 31st, 2026

## Sure-Check™ Self-Seal Sterilization Pouches

200/box		Reg.	Sale
(11805)	2.25" x 4"	\$23.05	\$20.99
(11803)	2.75" x 9"	\$28.45	\$25.99
(11804)	3.5" x 5.25"	\$26.85	\$24.99
(11800)	3.5" x 9"	\$28.65	\$25.99
(11802)	5.25" x 6.5"	\$29.35	\$26.99
(11799)	5.25" x 10"	\$40.55	\$37.99
(11797)	5.25" x 15"	\$71.95	\$66.99
(11796)	7.50" x 13"	\$72.55	\$67.99
(11798)	8" x 16"	\$129.55	\$119.99



Built-in, multi-parameter, internal/ external process indicators for all three sterilization criteria of time, temperature and steam.

100/box		Reg.	Sale
(11794)	10" x 15"	\$101.75	\$90.99
(11795)	12" x 18"	\$98.15	\$90.99

## DentaPure™ Municipal Water Cartridge

Easily adapted for installation onto incoming waterlines plumbed directly to city water via included poly-flo fittings.



- (19179) 365 Day Filter System/each  
Reg. \$403.99 **2+1 FREE = \$269.33/ea**
- (19172) 365 Day Muncpl Filter/each  
Reg. \$403.99 **2+1 FREE = \$269.33/ea**

Free good will ship with orders.

## Ultra™ Secure Fit™ Surgical Face Masks

- (17003) For Sensitive Skin, ASTM Level 3, 50/Box, White  
Reg. \$32.99 **6+4 FREE = \$19.79/ea**
- (17001) Fog Free™ For Sensitive Skin, ASTM Level 3 40/box, White  
Reg. \$36.99 **6+4 FREE = \$22.19/ea**



## ConForm® 10, Result in 10hrs

### In-Office Biological Monitoring

Easy to use: Simply process indicator in a normal steam sterilization cycle followed by a 10 hour incubation cycle.



- (19168) Confirm 10 Starter kit (Incubator, Record Keeper, Manual)  
Reg. \$788.95 **Sale: \$728.99**

- (11778) Biological Indicators, 25/box  
Reg. \$176.99 **Buy 2 Get 1 (11806) FREE**

11778

## ConForm® 24, Result in 24hrs

### In-Office Biological Monitoring

Easy to use: Simply process indicator in a normal steam sterilization cycle followed by a 24 hour incubation cycle.



- (19226) Confirm 24 Starter kit (Incubator, 25 Indicators, Crusher, Record Keeper, Manual)  
Reg. \$818.25 **Sale: \$810.99**

- (19103) Incubator Machine  
Reg. \$516.85 **Sale: \$447.99**

- (19052) Biological Indicators, 25/box  
Reg. \$137.99 **Buy 2 Get 1 (11806) FREE**

19103

19052

- (19501) SporView Self-Contained Steam BI 100 /box  
Reg. \$389 **Sale: \$336.99**



19501

## Steam Plus™ Type 5 Integrators

Immediate-readout; confirm sterilization conditions with a definitive pass or fail result.



- (11806) 4" Strips, 100/bag  
Reg. \$81.55 **Sale: \$79.99**
- (19176) Dry Heat Chemical Indicator Strip, 100/box  
Reg. \$49.75 **Sale: \$48.99**

## AirView™ II Bowie-Dick Test Pack

Easy-to-interpret indicator; smaller size reduces waste; does not contain lead.



- (19169) 30/case  
Reg. \$258.25 **Sale: \$252.99**

Offer(s) valid in Canada. Participation is not permitted for customers who participate in any other pricing program, including government, group practices, special markets, community health centers, schools, institutions, and discount customers. This offer cannot be combined with any other offer or promotion. Offer(s) not valid on Made-To-Order (MTO) products. To get your at no additional charge product(s), please email a copy of your distributor invoice dated January 1 – March 31, 2026 (purchase must be from an authorized HuFriedyGroup distributor) indicating the required buys and your at no additional charge goods selection to redemptions@hu-friedy.com. Dental Water Management, Operatory Supplies and PPE no charge products will automatically ship with your order from our participating authorized distributors. Proofs of purchases may be used for marketing purposes. Redemption must be postmarked by April 30, 2026. \*At no additional charge, equal or lesser value.

**HuFriedyGroup**  
The Best in Practice

## BeutiSealant

Fluoride Releasing Pit and Fissure Sealant System

(13640) BeutiSealant Set, 1.2 g BeutiSealant paste, 3 mL BeutiSealant primer, 15 needle tips, 50 micro brushes, 25 V-Dishes

Reg. \$137<sup>99</sup>/set

(13642) Syringe refill

Reg. \$26<sup>99</sup>/pack



## BeutiBond

Buy 2 Get 1 FREE!

(17218) Bottle 6mL, 50 Microbrushes

(17219) Unit Dose 0.1 mL, 50 Unit Doses, 50 Microbrushes

Reg. \$233<sup>99</sup>/pack Net: \$155<sup>99</sup>/pack



## BeutiBond Xtreme

Buy 2 Get 1 FREE!

(11756) Bottle (11757) Unit Dose

Reg. \$227<sup>99</sup>/pack Net: \$151<sup>99</sup>/pack



## OneGloss PS Kit

Buy 3 Get 1 Onegloss PS Assortment Kit (17110) FREE!

(17111) Cup Set, 50/Box

(17112) Midi-points, 50/Box

(17113) Inverted Cones, 50/Box

(17110) Assortment Set: 15 cups, 20 midi-points, & 15 IC

Reg. \$179<sup>99</sup>/pack



## Beautifil II Tips

Buy 4 Beautifil II Tips or Beautifil II LS Tips, Get 1 Beautifil II Tips A2 (17155) or Beautifil II LS Tips A2 (17181) FREE!

(Mix and Match Shades Must Be Like Item)

Beautifil II Tips Shades Available:

(17154) A1 (17155) A2

(17156) A3 (17157) A3.5

Reg. \$137<sup>99</sup>/ea



Beautifil II LS Tips Shades Available:

(17180) A1 (17181) A2

(17182) A3 (17183) A3.5

Reg. \$158<sup>99</sup>/ea



## Dura-White Stones

Reg. \$47<sup>99</sup>



## QUARTER SPECIALS

2026 | JANUARY 1- MARCH 31 | SHOFU DENTAL

SHAPE CATEGORY	RE1	TC1	TC4	WH1	WH4
SHAPE					
ISO #	062	020	040	040	060
HP (12 PK)	PN (14218)	(14219)	(14220)	-	(14221)
CA (12 PK)	PN (14229)	(14230)	-	-	(14231)
FG (12 PK)	PN -	(14240)	-	(14241)	-

SHAPE CATEGORY	CN1	CY2	FL1	FL2	FL3	IC2	IC4	KN1	KN3	RD1	RD2
SHAPE											
ISO #	024	025	030	025	030	032	045	050	070	030	024
HP (12 PK)	PN (14210)	-	(14211)	(14212)	(14213)	-	(14214)	-	(14215)	(14216)	(14217)
CA (12 PK)	PN (14222)	-	(14223)	(14224)	(14225)	-	(14226)	-	-	(14227)	(14228)
FG (12 PK)	PN (14233)	(14234)	(14232)	(14235)	-	(14236)	-	(14237)	-	(14238)	(14239)

## Dura-Green Stones

SHAPE CATEGORY	CN1	CN2	CN3	CY2	CY3	CY4	FL1	FL2	FL3	FL4	FL5
SHAPE											
ISO #	024	037	040	025	028	045	030	025	030	045	065
HP (12 PK)	PN (17090)	-	-	(17091)	(17092)	(17093)	(17094)	(17095)	(17096)	(17097)	(17098)
CA (12 PK)	PN (17101)	(17102)	(17103)	-	(17104)	-	(17105)	(14206)	(17106)	(17107)	-
FG (12 PK)	PN (14207)	-	-	(14205)	-	-	-	(14208)	-	-	-

Dura White/Green

Made of micrograined aluminum oxide grits, outstanding for finishing enamel, composites and porcelain.

HP Reg. \$42<sup>99</sup>

CA Reg. \$47<sup>99</sup>

FG Reg. \$47<sup>99</sup>

## Beautifil II

Beautifil II Syringe: 4.5g

Reg. \$82<sup>99</sup>/ea

Beautifil II LS Syringe: 4.5g

Reg. \$123<sup>99</sup>/pack



Shades Available:

A1, A2, A20, A3, A30, A3.5, A4, B1, B2, BW, C2

## Beautifil Flow Plus



Buy 4 Beautifil Flow Plus Syringes, Get 1 Beautifil Flow Plus F00 A2 (14245) FREE!

Shades Available:

(14244) A1 (14245) A2

(14246) A3 (17194) A3.5

Reg. \$69<sup>95</sup>/ea Net: \$55<sup>96</sup>/ea



SCAN QR CODE  
FOR THE COMPLETE  
LIST OF BEAUTIFIL  
FLOW PLUS



For complete ordering information, contact your authorized Shofu Dealer. Email, fax, or mail this page with a copy of your invoice to customer-service@shofu.com, 760.736.3276, or Shofu Dental Corporation 1225 Stone Drive, San Marcos, CA 92078-4059

- Proof of purchase on one Shofu authorized distributor invoice is required.
- Make sure that the dealer invoice clearly shows your name, address, phone number and products purchased. Incomplete or illegible invoices will not be honored.
- Bonus products will be shipped to you directly from Shofu Dental Corporation. CANADA: Bonus products will be shipped to you directly from your Shofu Canadian Dealer. Allow 8-10 weeks for delivery.
- Offer cannot be combined with any other Shofu special. Shofu reserves the right to discontinue or change this offer at any time.
- Offer valid until the end of March.



## Super-Snap Refills

50pcs/pk

- (14249) Black Coarse-Safe Side Down
- (14250) Black Coarse-Mini-Disk
- (14251) Violet Medium-Safe Side Down
- (14255) Violet Medium-Double Sided
- (14254) Violet Medium-Double Sided, Mini
- (14247) Green Fine-Double Sided
- (14252) Green Fine-Safe Side Down, Mini
- (14248) Red SuperFine-Double Sided
- (14253) Red SuperFine-Safe Side Down, Mini



Reg.\$47<sup>99</sup>/Pack

## Super-Snap Rainbow Technique Kit

(14243) Contains:

- 180 (20 ea.) Discs & Mini-Discs,
- 40 Polystrips (20 black/violet, 20 green/red),
- 2 CA Dura-White Stones,
- 1 CA Composite Fine Midi-Point, 2 CA mandrels.



Reg. \$185<sup>99</sup>/Pack



## QUARTER SPECIALS

2026 | JANUARY 1- MARCH 31 | SHOFU DENTAL

# SILMET

## Manage Your Costs with Premium Products

January 1- March 31, 2026

### PROETCH

(13405) 4g Syringe

Reg.\$27.99



### PROETCH

(13403) Box of 24 Syringe x 1.2ml

Reg.\$124.99



### PROLink

(20269) 5 ml Bottle

Reg.\$72.99



### PROFil

Compules, 315g x 20/pk  
Shades: A1 (20267), A2 (20266), A3 (20265),  
A3.5 (20268), A4 (11348), B1 (20502)

Reg.\$103

Sale: \$88.99



### PROFil Flow

4 x1g Syringes plus 10 Tips, 1gm  
Shades: A1 (20263), A2 (20262),  
A3 (20261), A3.5 (20264)

Reg.\$79.95

Sale: \$74.99



### PROFil

4g Syringe  
Shades: A1 (20917), A2 (20918),  
A3 (20919), A3.5 (21000)

Reg.\$49.95



## Spherodo AMALGAM ALLOYS

100% MONEY BACK GUARANTEE 500 packs & 50 packs

### Spherodon - M

Admix Alloy, 45.5%  
Ag(Silver), High Copper,  
Non Gamma II

COMPARE TO  
CONTOUR



- Outstanding dimensional stability
- Improved marginal integrity
- More body
- Easy condensation versatility
- Reduced risk of fracture
- High corrosion resistance

#### Size

#### 500/pk

#### 50/pk

1 Spill	Regular Set	(21017)	\$1,030	(20505)	\$105 <sup>99</sup>
	Fast Set	(21016)	\$1,030	(20508)	\$105 <sup>99</sup>
2 Spill	Regular Set	(21019)	\$1,520	(20506)	\$156 <sup>99</sup>
	Fast Set	(21018)	\$1,520	(20509)	\$156 <sup>99</sup>
3 Spill	Regular Set	(121493)	\$1,880	(20507)	\$193 <sup>99</sup>
	Fast Set	(120493)	\$1,880	(20600)	\$193 <sup>99</sup>



## Sectional Matrix System


MEGA V represents the innovation behind the converging tines technology and the superior clinical performance only a sectional matrix system can provide. The use of heat-treated stainless steel, ensures the intended force is delivered to separate the adjacent tooth, freeing the clinician to perform class II restorations, quickly and efficiently.


The MEGA V sectional matrix system offers a single ring size intended for molars and premolars, which can be stacked to achieve multiple restorations at one time.



### Order Info:

Matrix System Kits	Code	Description	Reg.	Sale
	11858	<b>Mega V Ring Clinical Trial Kit</b> , Includes: • Mega Ring (2 pcs) • Matrix Bands Thin Flex, Small (50 pcs), Large (50 pcs) • Contact Wedge	\$298	\$282.99
	17060	<b>Mega V Ring Clinical Kit</b> , Includes: • Mega Ring (4 pcs) • Matrix Bands Thin Flex, Small (100 pcs), Large (100 pcs) • Contact Wedge	\$578	\$548.99
	19119	<b>Mega V Ring Clinical Kit Plus</b> , Includes: • Mega Ring (4 pcs) • Matrix Bands Thin Flex, Small (100 pcs), Large (100 pcs) • Contact Wedge • Ring Plier & Matrix Forceps	\$843	\$799.99

Matrix Rings	Code	Description	Reg.	
	19133	Mega V Ring (2 pcs)	\$219.99	

Instruments	Code	Description	Reg.	
	19131	Mega V Ring Pliers Plus	\$148.99	
	19132	Mega V Grip Forceps		

Matrix Bands	Code	Description	Reg.	
	19126	Mega V Matrix Bands, Subgingival (50/pk)	\$94.99	
	19124	Mega V Matrix Bands, Stiff Flex, Large (100/pk)	\$109.99	
	19125	Mega V Matrix Bands, Stiff Flex, Small (100/pk)		
	19122	Mega V Matrix Bands, Thin Flex, Large (100/pk)	\$109.99	
	19123	Mega V Matrix Bands, Thin Flex, Small (100/pk)		
	19120	Mega V Matrix Bands, Ultra Thin Flex, Large (100/pk)	\$141.99	
	19121	Mega V Matrix Bands, Ultra Thin Flex, Small (100/pk)		

Wedges	Code	Description	Reg.	Sale
	19128	Mega V Wedges, Large, Green (100/bag)	\$64	\$61.99
	19129	Mega V Wedges, Medium, Orange (100/bag)		
	19130	Mega V Wedges, Small, Blue (100/bag)		

### bulkeZ®

Refill: 2 Syringes (6 gm ea.), 6 Tips (17 gauge), 6 Tips (19 gauge)

(19750) Refill A1 (19751) Refill A2 (19752) Refill A3

Reg. \$279 **Sale: \$264.99**



### bulkeZ PLUS

Dual-Cure Bulk-Fill Composite

(11854) A1 (17061) A2 (18607) A3

Reg. \$135.99 **Promo: 3+1 Free Net. \$101.99**



### Caries Finder

(18803) CariesFinder Red 10ml

(18804) CariesFinder Green 10ml

Reg. \$92.99



### MicroEtcher Powder

(18796) Aluminum Oxide 27 Micron 1/lb

(18797) Aluminum Oxide 50 Micron 1/lb

(13284) Aluminum Oxide 90 Micron 1/lb

(18798) Glass Beads 90 Micron 1/lb

(18799) Orthophrophy SA-85 85 Micron 1/lb



Aluminum Oxide Glass Beads Orthophrophy

Reg. \$56.99

### Air Polisher Powder

(18801) B+ Sodium Bicarb 1/lb (For use in Microprophy)

(18802) Sodium Bicarb 1/lb (For use in other prophys)



Reg. \$56.99

### MicroPrime™ G Desensitizer Bottles

(11843) MicroPrime G Type 10ml

Reg. \$203.99 **Promo: 3+1 Free = \$152.99**



Request must be received by 03/31/2026. Offer valid in U.S. and Canada only. Please allow 4-6 weeks for processing. All no-charge goods will ship directly from the manufacturer. Limit 3 redemptions per offer per customer. To receive no-additional-charge goods, please send a copy of your dealer invoice dated 01/01/2026-03/31/2026 with corresponding promo code via fax directly to 760-444-4881, or email the invoice to sales@zestdent.com.



## 2026 Q1 PROMOTIONS



### XP® Sharpen-Free

Code	Instruments	Reg.	Sale
10584	Scaler Blackjack XP (3/8) Black	\$114.99	
10530	Blackjack Pro Thin XPX (3/8) Black	\$114.99	
18744	Scaler Eagle Claw XP (3/8) Red	\$114.99	
10556	Gracey 13-14 XP 3/8" Resin Handle	\$114.99	
10551	Gracey 11-12 XP 3/8" Resin Handle	\$114.99	
18016	DE Scaler H6-7 XP 3/8" Resin Handle	\$110.99	
20037	Scaler Neb 128 (DE) XP (3/8) Orange	\$110.99	
20036	Scaler 204S XP (3/8) Yellow	\$110.99	
18030	Gracey 11-12 XP (3/8) SS	\$125.95	<b>\$121.99</b>

### Talon Tough Stainless Steel

Code	Instruments	Reg.	Sale
20034	Scaler Blackjack (3/8) Black	\$83.95	<b>\$77.99</b>
20032	Columbia 13-14 (3/8) Blue	\$79.75	<b>\$77.99</b>
18031	Gracey 13-14 (3/8) Blue	\$97.95	<b>\$79.99</b>
20033	Gracey 11-12 (3/8) Orange	\$97.95	<b>\$79.99</b>
20030	Scaler H6-7 (3/8) Purple	\$83.95	<b>\$77.99</b>
20031	Scaler Neb 128 (DE) (3/8) Orange	\$83.95	<b>\$77.99</b>
18123	Scaler 204s (3/8) Yellow	\$79.75	<b>\$77.99</b>
19331	Columbia 4L-4R (3/8) Stainless	\$83.95	<b>\$77.99</b>
20035	Gracey 1-2 (3/8) Purple	\$75.99	

Creating Smiles, Creating Possibilities

\*Free goods fulfilled and shipped with order from your authorized Canadian Dental Distributor. Free goods shipped with order.



## PREMIUM Waxed Dental Floss



**NYLON DENTAL FLOSS**  
15-meter trial size, 72 pcs/box  
(20084) Mint waxed  
(20085) Unflavored waxed

Reg. \$36.95/box



**FLOSS REFILL**  
200 yards/roll  
(20083) Mint waxed

Reg. \$4.99/roll



**FLOSS DISPENSER**  
with 200 yards floss  
(20082) Mint waxed

Reg. \$5.99/ea



**DISPOSABLE MOUTH MIRROR**  
Assorted 6 Bright Colors, 48 pcs/bag  
(20209)

Reg. \$20.95/bag



**FLOSS DISPENSER**  
Beige color only  
(20210)

Reg. \$7.99/ea



**FLOSSII™ FLOSSERS PICKS**  
White, 50 bags of 4/box  
(20211)

Reg. \$20.95/box



**KIDSFLOSSII™ FLOSSERS**  
4 Assorted shapes and colors  
50 bags of 4/box  
(20212)

Reg. \$25.95/box

## ORTHODONTIC TOOTHBRUSH



V-shape  
(20089)



A-shape  
(20090)

12 Brushes/Box,  
Assorted 4 colors

Reg. \$9.89/box

## IMPLANT & SURGERY SOFT TOOTHBRUSH



Soft end-tufted  
bristles  
(20091)



Long soft  
bristles  
(20092)

12 Brushes/Box,  
White colors

(20091)  
Reg. \$19.99/box  
(20092)  
Reg. \$9.89/box

## END-TUFTED SPECIALTY BRUSH



(20086)

Assorted in blue,  
green, mauve and  
orange  
48pcs of 1/box

Reg. \$33.59/box

## DENTURE CAREBRUSH



**Flat Trimmed  
Brush**  
Color: Blue,  
Magenta  
and Assorted  
2 colors  
(20087)

Reg. \$17.21/dz



**Dual Action  
Brush**  
Color: Tangerine/  
White,  
Blue/White and  
Assorted 2 colors  
(20088)

Reg. \$20.97/dz

## INTERDENTAL BRUSHES & INTERDENTAL ANGLE BRUSHES

50 bags/box

Reg. \$20.99/box



Orange & Green Assorted  
Interdental Brushes (20093)

Orange & Green Assorted  
Interdental Angle Brushes (20258)



Light Blue & Mauve Assorted  
Interdental Brushes (20094)

Light Blue & Mauve Assorted  
Interdental Angle Brushes (20257)



Dark Blue & White Assorted,  
Interdental Brushes (20095)

Dark Blue & White Assorted,  
Interdental Angle Brushes (20256)

## SPIREBRUSH™ INTERDENTAL FLOSSING BRUSHES

5 pcs /pack

Reg. \$2.99 /bag



2 mm-3 mm Tapered  
Assorted in Lite Colors  
(20096)



2 mm-4 mm Tapered  
Assorted in Neon Colors  
(20097)



3 mm-7 mm Tapered  
Assorted in Neon Colors  
(20098)



# Let's achieve waterline compliance success together!



"Working with ProEdge has been easy! I appreciate their friendliness, responsiveness, and clear communication. If you are new to waterline management, they are a particularly great resource to get you on the right track!"

- Dr. Sarah Vander Beek, Dentist

## BluTube®

Dental Unit Water Purification Cartridge



**Hands-off maintenance**

**Designed to be more effective than traditional 1-year straws**

**The only true year long straw treatment product**

(20067) BT180 \$447<sup>99</sup>

*Includes:* two 6-month cartridges  
automatic replacement indicator,  
dummy straw, & quickstart guide

## QuickPass®

IN-OFFICE DENTAL WATER TEST



**#1 Most Trusted In-Office Water Test**

**Easy-to-read results in 48-72 hours**

**Free access to the ProEdge Compliance Dashboard**

(20068) 4-pack \$128<sup>99</sup>  
(20069) 8-pack \$236<sup>99</sup>  
(20070) 12-pack \$313<sup>99</sup>  
(20071) 24-pack \$548<sup>99</sup>

**SALE**

## BluTab®

Waterline Maintenance Tablets



**Easy-to-use**

**Remains effective for up to 28 days**

**EPA-registered to provide <10 CFU/mL**

(20065) BT50 **Sale: \$65<sup>99</sup>**  
(for 750mL bottle, 50/box) ~~Reg. \$69.99~~  
(20066) BT20  
(for 2 Litre bottle, 50/box) **\$104<sup>99</sup>**

## SoftX Digital

FOAM BITE WING LOOP



**Quick, Comfortable X-rays Every Time!**

**Easy, Comfortable, Accurate, Economical & Flexible**

(250/pack)

(20073) Size #1 \$103<sup>99</sup>  
(20072) Size #2 \$103<sup>99</sup>

Promos active January 1- March 31, 2026

No mix & match. Free goods shipped with order. Excludes chargeback customers.



# USA Instruments

## Matrix Retainers Tofflemire

(20028) Junior  
(20027) Universal  
(20026) Senior



Reg. \$29.95/ea

**4+1 Free = \$23<sup>96</sup>/ea**

## Explorers

(12174) EXD 5L  
3EZ Thicker Handle



(12176) Large Handle  
Pigtail Explorer



(19031) 23/CP08  
3-6-8-11mm



Reg. \$39.95 **Sale: \$31<sup>96</sup>**

## Forceps

(14982)  
#1, Upper Centrals



(14983)  
#150S, Pedodontic



(14984)  
#10H, Upper Molars



Other forceps available

Reg. \$119 **Sale: \$89<sup>99</sup>**

## Sterilization Cassettes



		Reg	20% Off
(12136) F5	5 instr.	\$45.50	\$36.40
(12137) F7	7 instr.	\$65.99	\$52.80
(12138) F10	10 instr.	\$69.95	\$56.95
(12139) F20	20 instr.	\$109.95	\$87.96
(12140) F15 Plus	15 instr. w/space	\$109.95	\$87.96

## Curettes

*Mixing and matching is allowed!*

(12187) BH1/2



(12188) R3/4



(12185) MCCALL  
13/14S



(12186) COL4R/4L



## Gracey Standard

(12189) GR1/2



(12191) GR7/8



(12192) GR11/12



(12193) GR13/14



## Scaler

(12181) H6-7



(12182) U15-30



(12183) 204S



Reg. \$42.95

**4+1 FREE = \$34<sup>36</sup>**

## Burnishers



(14969) B26/27S BALL



(14970) B27/29 BALL

Reg. \$39.95

**4+1 FREE = \$31<sup>96</sup>**

## Root Elevator Luxator

(14976) 3mm STR



(14977) 5mm CVD



(14978) 5mm STR



(14980) 3mm CVD



Reg. \$89 **Sale: \$69**

## Elevator Root Tip

(14973) 78 STR



(14974) 79 LEFT



(14975) 80 RIGHT



Reg. \$89 **Sale: \$69**

## Rubber Dam Punch

(12298) Ivory 17cm  
Reg. \$85



**Sale: \$77<sup>90</sup>**

(12198) Ainsworth 17cm  
Reg. \$125



**Sale: \$116<sup>99</sup>**

## Crown Tool

(14972)



Reg. \$119

**Sale: \$89<sup>79</sup>**

## Office Essential Spare Parts

### Saliva Ejectors Suction (11682)

Reg. \$59

**Sale: \$49<sup>95</sup>**



### HVE Suction

Reg. \$69.95

**Sale: \$62<sup>95</sup>**



(11680)



(11679)

### Poly Q.D Male Insert

For use with water or air  
(11628) 3/8", With shut-off

Reg. \$29.99

**Sale: \$25<sup>95</sup>**

(11629) 1/4", With shut-off

(11630) 1/4", Without shut-off

Reg. \$29.95

**Sale: \$22<sup>95</sup>**



### Poly Q.D Female Panel Mount

For use with water or air, With shut-off

(11627) 1/4"

Reg. \$19.99

**Sale: \$15<sup>99</sup>**

(17038) 3/8"

Reg. \$39.99

**Sale: \$27<sup>99</sup>**



### Hydraulic Oil

For use on all Hydraulic chairs

(11664) 10 wt

Reg. \$25.99

**Sale: \$18<sup>99</sup>**



### N1 Filter Kit

(20905) Yellow

Reg. \$39.99



### Comfortek Collector Screen

(19436) Yellow

Reg. \$39.99



### Cassette Seal

(18816) STATIM 2000, RPI

(18817) STATIM 5000, RPI

Reg. \$109.95

**Sale: \$89**



### Pelton & Crane Light Bulb

(11728) Pelton & Crane Light Bulb

Reg. \$39.99

**2+ @ \$29<sup>95</sup>**



### Operating Light Bulb

Fits Beyes, Adec, Midmark, Dentech,  
Eurodent, Planmeca, SDS, Sirona E1&A1s

(12930) 12V, 50W

Reg. \$25.95

**4+ @ \$15<sup>99</sup>**



### Air / Water Syringe

(11668) 45% Softer Button

Reg. \$99.99

**Sale \$89<sup>95</sup>**

**2+ @ \$85<sup>95</sup>**



### Handpiece Gaskets

(13196) Fit 4 and 6-Hole

Reg. \$4.00



### Vacuum Collector Screens

1 7/8"

(11693) ①

(11695) ②

100Pcs

Reg. \$70.95

**Sale: \$55<sup>95</sup>**



(11694) ①

(11692) ②

1Pcs

Reg. \$0.99

**Sale: \$0<sup>79</sup>**



### Solids Collector Disposable Covered Screen

2 1/8", For Beyes Comfortek

Dental Chair

(11700) 1Pcs

Reg. \$1.80

**Sale: \$0<sup>95</sup>**



### Thru Counter Sharps Container

- Holds 1.7 qt. sharps container
- Includes lid & 6803 sharps container
- Direct replacement for Pelton & Crane® cabinets

(17039) 5" I.D. x 11" tall

Reg. \$499.95

**Sale: \$345<sup>60</sup>**



### Replacement Sharps Container

(11702) 1.7 Qt.

Reg. \$36.95

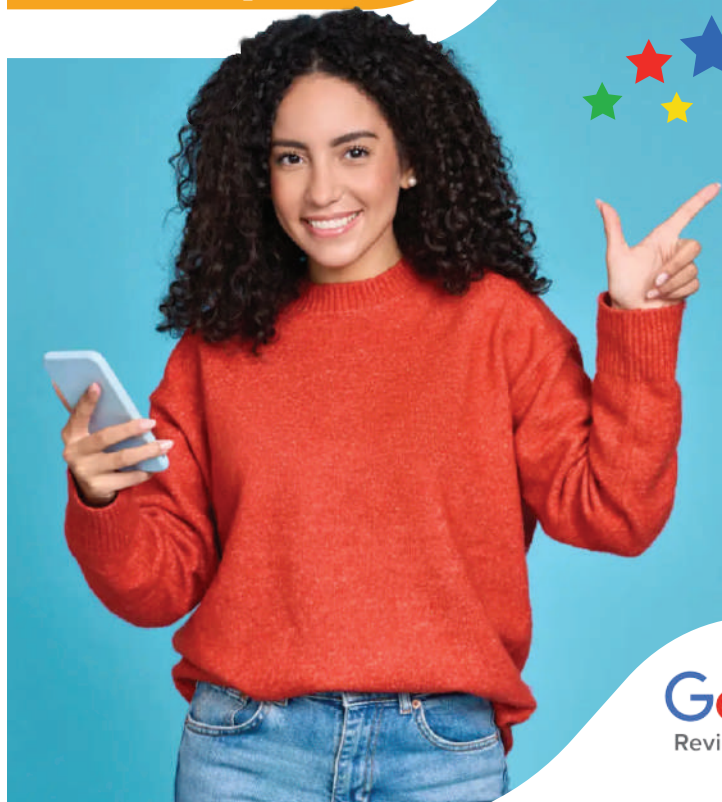
**Sale: \$29<sup>95</sup>**

(11704) 6.2 Qt.

Reg. \$39.95

**Sale: \$37<sup>95</sup>**





\*Get \$10 Credit & 1 Draw Ticket per review for a chance at 10% Off (Max \$200, Monthly Draw Oct-Dec 2025, 90-Day Coupon)  
Submit via Google Form: [bit.ly/AtopGoogleForm](https://bit.ly/AtopGoogleForm)



WARRANTY NOTICE - Atop Dental Canada Inc. may not be the authorized distributors appointed by some manufacturers of the products ("Manufacturers") to market the products in Canada and U.S.A. Although the product may be similar to those distributed in Canada and other parts of the world by the Manufacturer's distributors, are not purchased from the manufacturers directly and may not be warranted by the manufacturer's which may refuse to honour the manufacturer's warranty accompanying the product. Atop will honour the manufacturer's warranty and/or quality guarantee accompanying the product. Some offers may end earlier, please check accordingly. Atop Dental Canada Inc is not responsible for any typographical errors. Prices are subject to change without prior notice. All brands are holders of their respective trademarks. Valid January 1- March 31, 2026.

Document #: ENC042R1/ 23.01.26



**Atop Dental Canada Inc.**  
1E26-9390 Woodbine Ave  
Markham, Ontario, L6C 0M5  
Canada  
T: 1-877-703-3562 or 416-293-2868  
F: 1-866-680-8748  
E: [order@atopdent.ca](mailto:order@atopdent.ca)

