

GIFT

COME TO Atop[®] GET YOUR

GIFT GIFT GIFT GIFT


BOOTH #1031



★ **FREE AIR TICKET**

Lucky Draw Everyday!

For every \$500 purchase, you
will receive 1 Raffle Ticket.
Chance to win the

 **AIR CANADA Free Ticket.**
(Value \$1,500)

The Lucky Draw will start at 5:00 PM of May 8th & 9th, 2025. You must be onsite in order to qualify.

★★ **FREE LOUIS VUITTON**

- ➔ With purchase over \$8,999, you will receive 1
LOUIS VUITTON **Pochette Camille** (M13566).
- ➔ With purchase over \$13,500, you will receive 1
LOUIS VUITTON **Diane** (M45985).



(M13566)



(M45985)



GIFT

GIFT

Comfortek® X1 Expert

Dental Operating System

30% OFF
\$12,399

- German Concept, Ergonomic Design
- Reliable & Durable
- Safety Anti-collision System
- Flexible Control
- Ultimate Comfort

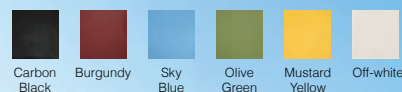


Includes:

- Stitched cushion design
- Single 6 pin fiber-optic tubing
- Built-in piezo
- Double post design
- Flexible delivery tray with control panel and pre-set memory positions
- Quadruple holder on assistant side with control panel
- Additional color options
- M7 LED light – composite mode with motion sensors

(20504) Reg. \$17,599 *Installation & shipping not included.

Color Option:



LOUIS VUITTON M45985



Stable



Smart



Comfort

AirLight® M800X

Generator+LED High Speed Handpiece

- 27W of Torque
- Quattro Spray
- Instant Stop Technology
- 25 Months Warranty

Backend	Code
Beyes®	(19475)
NSK®	(19474)
Kavo®	(19473)
Star®	(19476)



Reg. \$1,819/ea
2+1Free = \$1,212/ea

Maxso® M200E

Non-optic High Speed Handpiece

- 19W of Torque
- Single Spray
- Push Button
- Stainless Steel Ball Bearings
- Low Turbine Noise
- No Swivel
- 6 Months Warranty



Backend Mini Head
4 Hole (13138)

Reg. \$205/ea
Buy 5 for \$826



Slimax-C Plus®

LED Curing Light System

- 5-Second Curing
- 2000 mW/cm ± 10%
- Built-In Digital Radiometer
- Cordless Design
- Up to 850 Cures Per Charge
- Solid Aluminum Body
- Rechargeable Samsung Battery
- 1 Year Warranty



(14360) Blue
(14364) Silver
(14362) Pink

Reg. \$909/ea
1+1Free = \$454/ea



DURAY®

Intraoral Sensor

- Thinnest Sensor 4.4
- Durable and Reliable
- High Resolution Imaging
- Easy to Use
- Available in 4 sizes
- Warranty: 24 Months



With just a 4.4mm profile and a theoretical resolution of 25 lp/mm, image quality is exceptional while ensuring easy positioning and maximum comfort for the patient. Installation is simple and straightforward with a plug-and-play design, and image processing specifications can be customized to meet your practice needs for enhanced diagnosis.

(20232) DS1 & DS2 Kit	Reg. \$8,580	Sale: \$6,006
(19037) DS0 Package	Reg. \$3,003	Sale: \$2,102
(20231) DS1 Package	Reg. \$4,012	Sale: \$2,808
(19036) DS1.5 Package	Reg. \$4,394	Sale: \$3,075
(20230) DS2 Package	Reg. \$5,005	Sale: \$3,503

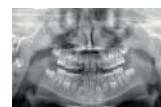
30% OFF

DURAY® 2D

Extraoral X-ray Series

The Duray® 2D is the latest addition to Beyes® gamma line of panoramic platforms, providing nine specialized panoramic programs, an integrated touchscreen, and convenient future proofing. In an era where remote upgrades hold growing significance, the Duray® 2D platform is intentionally designed for easy remote enhancement. Drawing from the well-established Duray® 3D platform in the market, the Duray® 2D introduces unmatched innovation to the world of panoramic imaging.

- Smart Backlight
- Integrated Touchscreen
- Advanced Sensor
- Warranty: 72 Months
- New Dynamic and Automatic Image Focusing



(14194) Reg. \$34,999

Sale: \$27,999



LOUIS VUITTON M13566

*Installation is subject to local regulations. Prices are for wall mount models, base plate not included. Installation & shipping not included.

20% OFF



Follow Us:

Facebook: Atop Dental Canada Inc. | Instagram: @atopdentalcanada | Twitter: @atopdent | LinkedIn: Atop Dental Canada Inc



Canaview®

Intraoral Camera

An excellent communication tool that improves understanding and interaction with patients. It provides visual evidence that you need to educate patients and make more accurate diagnoses. Boasting a true autofocus and intuitive camera lighting system, this dental digital photography camera requires no manual adjustments and is easily shared between different examination rooms and chairs.



- 5M Pixels
- Auto-Focus
- Direct-USB Connection
- Compatible With Major Imaging Software:

AbleDent, Apteryx, Adstra, CaptureLink, CliniView, Cleardent, DentiMax, Digora, Dexis, Eaglesoft, Owandy, ProfSuni, and more...



(19466)

Reg. \$1,287/ea

2+1Free = \$858/ea

HOT DEAL

AirLight® M800 Surgical 45

Generator+LED High Speed Handpiece

- 22W of Torque
- 45° Head Design
- Rear Air Exhaust
- Stream Water
- 1 Year Warranty

Backend	Code
Beyes®	(18885)
NSK®	(13165)
Kavo®	(13160)
Star®	(13172)
4 Hole	(18887)



Reg. \$845/ea **2+1Free = \$563/ea**

Maxso® EP12-NS

Hygiene Handpiece

- 4:1 Nose Cone for DPA
- 1,250–10,000 RPM
- Connect Directly to Your Existing Air Motor
- 1 Year Warranty



(19588)

Reg. \$389/ea

3+1Free = \$292/ea

Maxso® X200X

Fiber-optic High Speed Handpiece

- 27W of Torque
- Quattro Spray
- Instant Stop Technology
- Titanium Body
- 25 Months Warranty



Backend	Code
NSK®	(19677)
Kavo®	(19678)

Reg. \$1,495/ea

3+1Free = \$1,121/ea

Accurator® A2

Apex Locator, Compatible with G2 Endo Motor

- 4.5" wide, color LCD screen
- Easy-to-use interface with adjustable inclination
- Accurate measurement in wet and dry canals
- Automatic calibration
- Autoclavable file clip, file hook, file probe



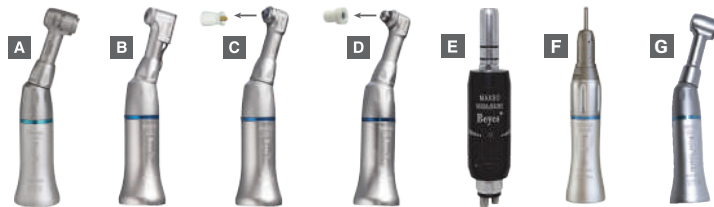
(19394) Reg. \$1,048 **Sale: \$899**

Maxso® Low Speed

E-Type Connection

3+1Free

*1 Year Warranty. Mix & Match, the promotional goods must be of equal or lesser value than the lowest priced item purchased.



		Reg	Net
A. (14279)	1:1 Push Button (CA Burs).....	\$247	\$185 /ea
B. (14281)	1:1 Latch Type (CA Burs).....	\$208	\$156 /ea
C. (14287)	1:1 Screw-On.....	\$195	\$146 /ea
D. (14286)	1:1 Snap-On.....	\$195	\$146 /ea
E. (13858)	Air Motor, 4 Hole, 20,000RPM.....	\$423	\$317 /ea
F. (14441)	1:1 Straight Nose Cone.....	\$181	\$136 /ea
G. (19403)	X97 Push Button (CA Burs).....	\$218	\$164 /ea

EZ-Swivel®

Couplers

3+1Free
1 Year Warranty.



		Reg	Net
A. (13181)	Beyes® PD connection, 4 Holes.....	\$215	\$161 /ea
B. (13146)	Beyes® QD connection, 4 Holes.....	\$215	\$161 /ea
C. (13135)	Kavo® connection, 4 Holes, Non-Optic...	\$358	\$269 /ea
D. (13136)	Kavo® connection, 6 Holes, Fiber-Optic..	\$358	\$269 /ea
E. (13166)	NSK® connection, 4 Holes, Non-Optic.....	\$358	\$269 /ea
F. (17062)	NSK® connection, 6 Holes, Fiber-Optic...	\$358	\$269 /ea

Mix & Match, the promotional goods must be of equal or lesser value than the lowest priced item purchased.

GPRO®

Gutta-percha Obturation System

30% OFF

(19396) P1 / Heating Pen Reg. \$1,232 **Sale: \$862**

- 0.2 Second Heating Time
- Ergonomic Design
- High Precision Temperature Control
- High-performance Conversion System

(19395) F1 / Filling Machine Reg. \$1,232 **Sale: \$862**

- Quick Heating within 15 Seconds
- 360° Rotatable Injection Needle
- Ergonomic Design
- Safer Protection Mechanism

(19397) S1 / Heating Pen + Filling Machine

Reg. \$2,352 **Sale: \$1,646**



ApexPilot®

Endo Motors

30% OFF

(19391) G1 Reg. \$980 **Sale: \$686**

- Imported Motor 15.5:1 reduction ratio
- Wireless Rechargeable Battery
- Automatic Torque Calibrating
- Nimble Contra-angle

(19392) G2 Reg. \$1,105 **Sale: \$774**

- Option to connect to matched apex locator
- High Performance Brushless Motor
- 6:1 Super Mini Contra-angle
- Efficient versatile functions

(19393) G3 Reg. \$1,755 **Sale: \$1,229**

- Built-in Apex Locator
- Integrated Length Determination
- All-angle OLED Screen
- Supports most major brands of NiTi files



Maxso® E800

Electric Handpiece System

30% OFF

- Powerful
- Steady Performance
- Smooth Operation
- Convenient & Durable
- 3 Programmable Memory Settings
- New Touch Screen Interface



(19579) 1 E800 +1 X99L Package
Reg. \$3,369 **Sale: \$2,358**

(20200) E800 Unit Only Reg. \$2,469 **Sale: \$1,728**

Maxso® X99L

1:5 Attachment

- Anti-Heat System
- 4 Points Spray
- Ceramic Ball Bearing
- Fiber-optic
- 12 Months Warranty



(14353) X99L

Reg. \$1,417 **2+1Free = \$945/ea**

Comfort-Sonic®

LED Piezo Scaler

- 3 Modes: Scaling, Endo, Perio
- Built-in Water Regulation
- Daylight LED
- Detachable Handpiece
- Autoclavable Up to 135°C
- Easy Adjustable, Portable Design



P6 Plus

(14573) P6 Plus

Reg. \$858 **2+1Free = \$572/ea**

Includes: 6 tips (value at \$150)

(14572) P9

Reg. \$1,495 **2+1Free = \$997/ea**

Includes: 8 tips, 1 tips holder & 2 water bottle (value more than \$400)



P9

Comfort-Sonic®

Piezo Scaler Handpiece & Accessories

Non-optic:

(14566) UHP-E, Beyes & EMS Compatible

Reg. \$311/ea **3+1Free = \$233/ea**

(14567) UHP-S, Satelec Compatible

Reg. \$365/ea **3+1Free = \$274/ea**



Fiber-optic:

(14568) UHP-EF, Beyes & EMS Compatible

Reg. \$365/ea **3+1Free = \$274/ea**



(14648) Tip Wrench

Reg. \$28 **5+@: \$19⁹⁹/ea**



DURAY®

Imaging Plate Scanner

45% OFF

Duray Image Plate Scanner enables fast and efficient image processing with outstanding image quality in just seconds to meet diagnostic needs. Say goodbye to the hazardous and costly traditional intraoral x-rays. Converting to digital imaging can be this simple.

- Powerful Processing
- Smart Design
- Compact Tabletop Design
- Comfortable
- Warranty: 24 Months



(20229) Duray DC1

Reg. \$9,099 **Sale: \$5,004**

CareMaster®

Automatic Handpiece Maintenance System

40% OFF

- Maximize the lifespan of handpieces
- Economical, efficient and time-saving
- Filtered air used to rotate the handpieces
- Provides care for all brands of handpieces

(13186) 2 High Speed & 1 Low Speed

Reg. \$1,689

Sale: \$1,013

(13188) 2 Low Speed & 1 High Speed

Reg. \$1,856

Sale: \$1,114

Includes 1 Free Maintenance Oil (1L)



Masteri®

Class B Autoclave

60% OFF

21 Minute Cycle 25 Months Warranty

- This Class B autoclave meets and exceeds the latest regulatory requirements so you can focus on your practice.
- FastMasteri delivers industry leading sterilized instruments in approximately 21 minutes.
- The built-in data logger saves time and money storing your data on a USB stick. Internal printer option available.
- Sterilization options are easily accessible with the intuitive touch display to enhance user experience.



(19323) 18L

Reg. \$7,330

Sale: \$2,932



(19324) 23L

Reg. \$8,398

Sale: \$3,360

*Installation & shipping not included. Install & ship: \$300